

ANTIGUA AND BARBUDA

Visitor Summary

For the third consecutive year, tourist arrivals to Antigua and Barbuda has grown. In 2004, this growth was recorded at 9.7 percent when arrivals totaled 245.8 thousand as compared to 224.0 thousand in 2003. The winter season was particularly strong as tourist arrivals increased by 23.6 percent. The summer period which accounted for the bulk of arrivals, 61 percent of the total, had a modest increase of 2.2 percent when compared to the same period in 2003.

- ◆ Arrivals from the United Kingdom (39.9 percent of total arrivals) and the USA (28.7 percent of total arrivals) formed the two largest markets for this destination. Stay-over arrivals from the UK rose by 17.6 percent partly due to the international cricket match (WI vs England), while those from the USA numbered 70.5 thousand, an increase of 9.6 percent over 2003. The less significant sources of arrivals, Caribbean, Canada and Other Europe matched the performances of these markets recording growth of 2.8 percent, 9.6 percent and 1.3 percent respectively. The ROW which accounted for the smallest share (1.2 percent) of total arrivals declined by 30.2 percent.

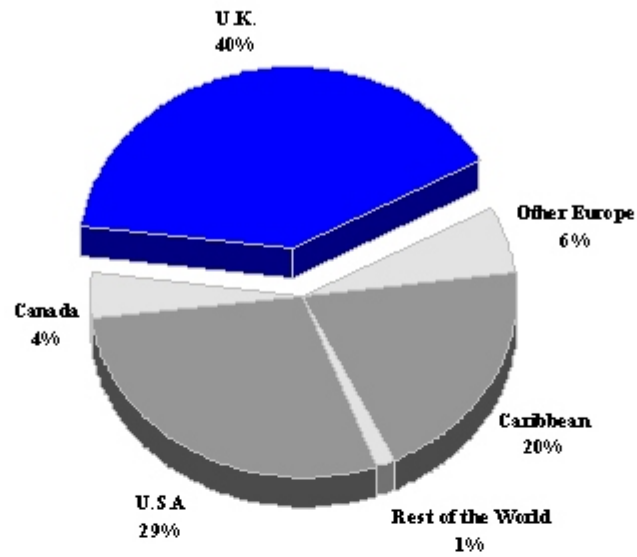
- ◆ At the end of 2004, Cruise passenger arrivals had risen by 35.5 percent to reach 522.8 thousand. An associated 26.3 percent rise in cruise ship calls was recorded.

TOURISM HIGHLIGHTS FOR 2004

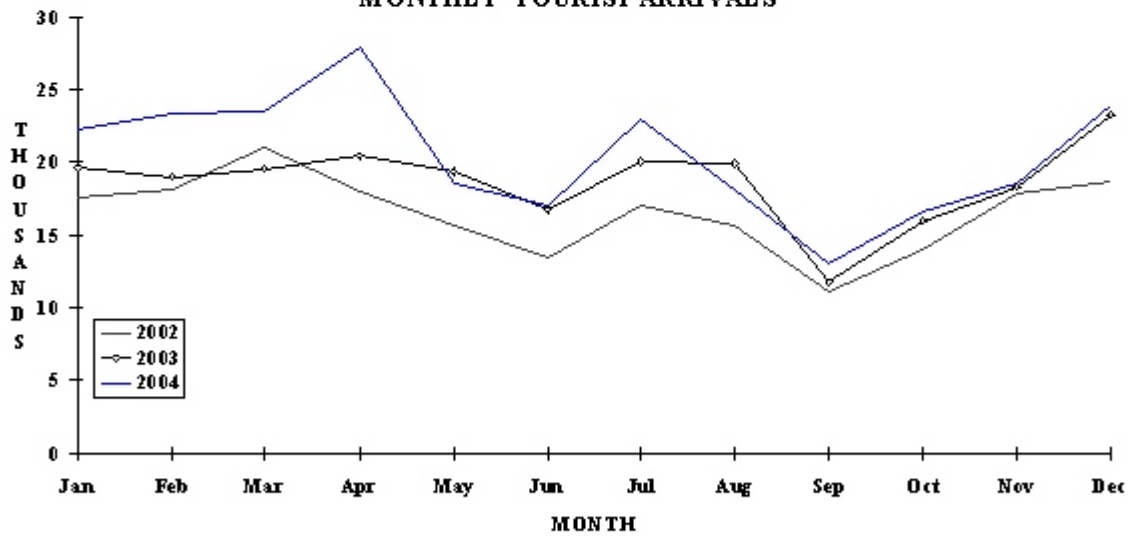
VISITOR ARRIVALS			
Tourist Air Arrivals (Non-nationals) ➔	245,797	Cruise Passenger Arrivals	522,753
➔ <i>Winter</i>	39.5%	➔ <i>Winter</i>	52.0%
➔ <i>Summer</i>	60.5%	➔ <i>Summer</i>	48.0%
Tourist Air Arrivals (Nationals)	n.a	Cruise Ship Calls	375
VISITOR PROFILE			
Tourist Arrivals by Purpose of Visit		Age Distribution of Visitors ^{IV}	
➔ <i>Holiday</i>	88.6%	➔ 15 and Under	8.2%
➔ <i>Business</i>	4.9%	➔ 15-44	56.6%
➔ <i>Other</i>	6.5%	➔ 45-59	26.9%
		➔ 60+	8.3%
TOURISM AND OTHER RELATED ECONOMIC STATISTICS			
Total Expenditure (<i>US\$ million</i>)	\$337.3	Hotel and Restaurant contribution to GDP	10.1%
GDP at Factor Cost (<i>US \$million</i>)	\$681.7	Consumer Price Index (% <i>ch. 2004/'03</i>)	1.7%
ACCOMMODATION STATISTICS		SOCIO-ECONOMIC STATISTICS	
Rooms	3,276	Land Area (<i>square Kilometres</i>)	440
		Population (<i>thousand mid year 2004</i>)	80.1

ANTIGUA & BARBUDA

**TOURIST ARRIVALS BY MAIN MARKETS
2004**



MONTHLY TOURIST ARRIVALS



ANTIGUA AND BARBUDA

TOURIST ARRIVALS BY COUNTRY OF RESIDENCE*

Country of Residence	2000	2001	2002	2003	2004	% Share 2004
U.S.A.	59012	60176	60680	64363	70534	28.7
Canada	14007	12839	10184	8603	9452	3.8
United Kingdom	74957	67785	72401	83447	98101	39.9
Other Europe	15092	10330	9406	15218	15416	6.3
Caribbean	38920	34260	38721	47588	48933	19.9
Rest of World	4883	7786	6693	4813	3361	1.4
TOTAL	206871	193176	198085	224032	245797	100.0

* Non-national Air Arrivals only

The statistics above exclude yacht and other tourist arrivals by sea, as well as visits by nationals of Antigua and Barbuda who permanently reside abroad. Further details are provided below

OTHER VISITORS	2000	2001	2002	2003	2004
Yacht	17356	n.a	n.a	n.a	n.a
Other Sea Arrivals	23143	n.a	n.a	n.a	n.a
Nationals Resident Abroad	6655	7233	6579	n.a	n.a

MONTHLY TOURIST ARRIVALS*

Months	2000	2001	2002	2003	2004	%Change 2004/03
January	17382	19212	17664	19609	22222	13.3
February	20521	18805	18163	18988	23322	22.8
March	21371	20601	21064	19516	23596	20.9
April	22582	21197	17972	20485	27970	36.5
May	16031	14206	15665	19378	18557	-4.2
June	15465	14404	13411	16711	16970	1.6
July	17689	15163	16997	20106	22971	14.2
August	16144	16001	15696	19932	18124	-9.1
September	10411	9718	11063	11746	13023	10.9
October	13834	12364	13999	15954	16568	3.8
November	16686	15061	17771	18357	18551	1.1
December	18755	16444	18620	23250	23923	2.9
TOTAL	206871	193176	198085	224032	245797	9.7

* Non-national Air Arrivals only

ANTIGUA AND BARBUDA

CRUISE PASSENGER ARRIVALS*

Months	2000	2001	2002	2003	% Change	
					2004	2004/03
January	53471	61190	57953	56195	71669	27.5
February	58047	46818	43799	42841	62424	45.7
March	53297	56676	53406	44298	68789	55.3
April	43568	54518	35496	45217	68776	52.1
May	20118	21512	9981	8259	13787	66.9
June	15700	17131	6628	9175	14542	58.5
July	15940	20442	7507	9802	16648	69.8
August	20450	18981	6764	9533	18680	96.0
September	14581	11655	6229	10210	22872	124.0
October	23443	11885	10202	25515	21855	-14.3
November	52787	38212	25431	55116	63078	14.4
December	58004	49792	46255	69525	79633	14.5
TOTAL	429406	408812	309651	385686	522753	35.5

Cruise Ship Calls** 331 271 217 297 375

*Excludes Windjammer Cruises which brought 11,756 passengers in 1999, 7,891 in 2000.

** At the Deep Water Harbour , Nelson Dockyard and Heritage Quay.

TOURIST ACCOMMODATION (Rooms)

Type of Accommodation	2000	2001	2002	2003	2004
Hotels	n.a	n.a	n.a	n.a	2855
Apartments/Villa	n.a	n.a	n.a	n.a	388
Guest Houses	n.a	n.a	n.a	n.a	33
TOTAL	3185	n.a	n.a	n.a	3276

Source: Antigua Department of Tourism