

BERMUDA

Visitor Arrival Summary

Tourist (Air) Arrivals to Bermuda in 2004 were 271.6 thousand, an increase of 15.0 thousand tourists over the total in 2003. Arrivals had declined by 4.4 percent by the end of August owing mainly to a lack of hotel inventory which was damaged by Hurricane Fabian in 2003. The loss during the period was compensated for in the September to December period. Arrivals grew by 44.4 percent when compared to the dip caused by Hurricane Fabian.

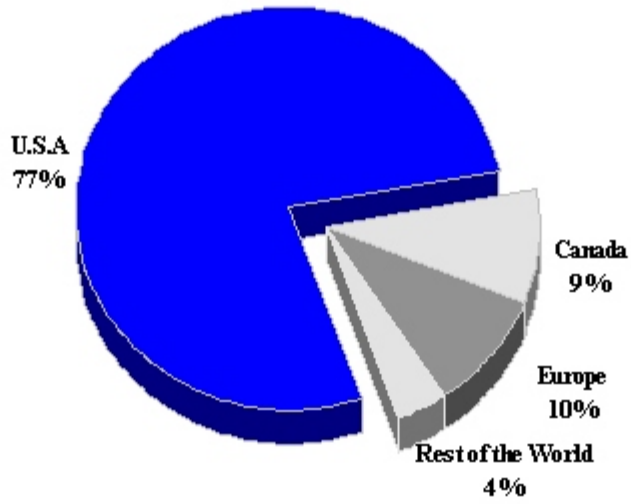
- ◆ Air arrivals from all markets in 2004 were greater than those 2003 expect for those from the United Kingdom which declined by 1.1 percent. The United States market, the main generating market for Belize , with a market share of 77.0 percent grew by 5.6 percent. Healthy gains were recorded by Canadian (up 8.2 percent) market and tourists from other parts of Europe (up 3.9 percent). The Rest of the World also rose significantly..
- ◆ In 2004, Bermuda welcomed the third highest number of cruise passenger in its history. On this occasion 206.1 thousand passengers visited in 157 ship calls. this was a decline of 8.8 percent when compared to 2003 although a similar number of calls were made.

TOURISM HIGHLIGHTS FOR 2004

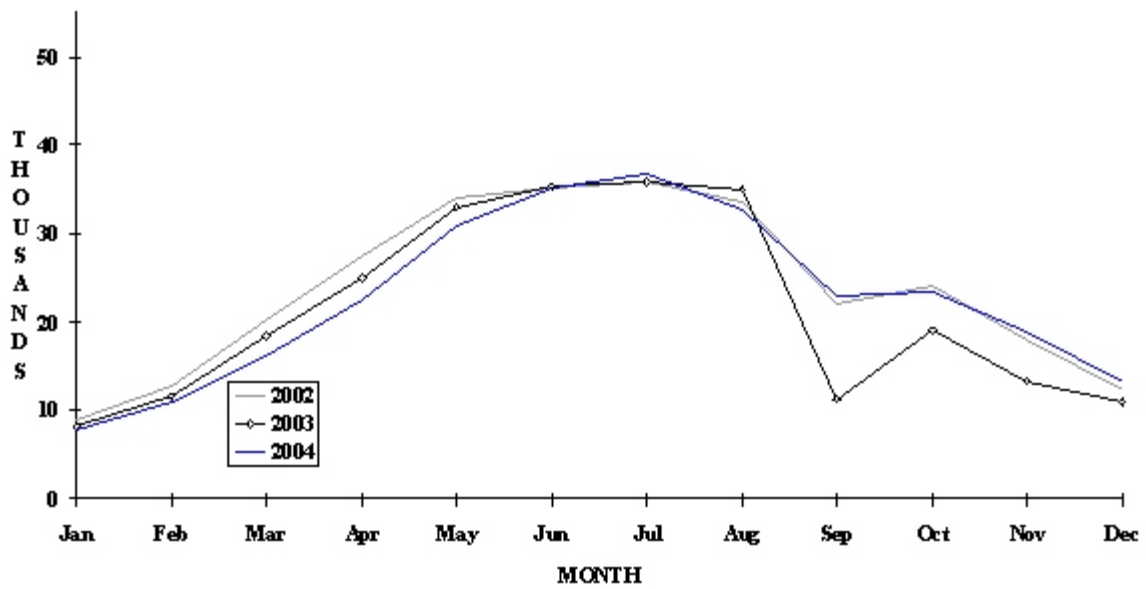
VISITOR ARRIVALS			
Tourist Arrivals →	271,617	Cruise Passenger Arrivals	206,133
→ <i>Winter</i>	21.2%	→ <i>Winter</i>	6.1%
→ <i>Summer</i>	78.8%	→ <i>Summer</i>	93.9%
		Cruise Calls	157
		Yacht visitors	5,057
VISITOR PROFILE			
Average Length of Stay (<i>nights</i>)	6.4	Tourist Arrivals by Place of Stay	
Tourist Arrivals by Purpose of Visit		→ <i>Hotels</i>	56.4%
→ <i>Holiday</i>	79.6%	→ <i>Guest House/Apartment</i>	19.8%
→ <i>Business</i>	20.5%	→ <i>Private</i>	23.5%
→ <i>Other</i>	-	→ <i>Other</i>	0.3%
TOURISM AND OTHER RELATED ECONOMIC STATISTICS			
Total Expenditure (<i>US\$ millions</i>)	\$353.7	Consumer Price Index (<i>% ch. 2004/'03</i>)	3.6%
Tourism Budget (<i>US \$ thousands</i>) ^{1b}	\$35,900	GDP at Factor Cost (<i>US\$ million</i>)	\$4,505.3
ACCOMMODATION STATISTICS		SOCIO-ECONOMIC STATISTICS	
Rooms	2,939	Land Area (<i>square Kilometres</i>)	53
Room Occupancy Rates	62.4%	Population (<i>thousand mid year 2003</i>)	62.0

BERMUDA

TOURIST ARRIVALS BY MAIN MARKETS
2004



MONTHLY TOURIST ARRIVALS



BERMUDA

TOURIST ARRIVALS BY COUNTRY OF RESIDENCE

Country of Residence	2000	2001	2002	2003	% Share	
					2004	2004
United States	256831	213475	217868	197911	209054	77.0
Canada	30706	27793	25882	24485	26491	9.8
United Kingdom	29218	23792	25595	21665	21431	7.9
Other Europe	6702	4708	5063	4271	4439	1.6
Rest of World	8734	8335	9561	8244	10202	3.8
TOTAL	332191	278103	283969	256576	271617	100.0

MONTHLY TOURIST ARRIVALS *

Months	2000	2001	2002	2003	% Change	
					2004	2004/03
January	10294	8426	8804	8194	7826	-4.5
February	13746	10806	12780	11065	11049	-0.1
March	24189	21399	20196	18432	16193	-12.1
April	33701	28276	27466	25002	22429	-10.3
May	37712	35647	33979	33064	31029	-6.2
June	42409	38813	35202	35333	35216	-0.3
July	39037	37225	35835	35914	36657	2.1
August	36659	35651	33498	35045	32669	-6.8
September	29193	15689	21939	11260	22896	103.3
October	29239	17324	23979	18979	23447	23.5
November	22960	16750	17894	13259	18923	42.7
December	12845	12097	12397	11029	13283	20.4
TOTAL	331984	278103	283969	256576	271617	5.9

* Excluding ship/air visitors. Due to a report conflict the monthly numbers are missing a small number of arrivals.

BERMUDA

CRUISE PASSENGER ARRIVALS*

Months						% Change	
	2000	2001	2002	2003	2004	2004/03	
January	0	0	0	0	0	-	
February	668	411	0	0	0	-	
March	0	717	585	136	743	446.3	
April	10751	8598	5669	9542	11792	23.6	
May	35778	30097	29232	32489	31830	-2.0	
June	31431	23374	37085	33660	32744	-2.7	
July	35645	34997	36526	43527	33064	-24.0	
August	37174	29430	29826	46674	42449	-9.1	
September	27569	25918	28543	26620	25782	-3.1	
October	28865	25893	29790	28825	23185	-19.6	
November	0	525	2809	4073	4023	-1.2	
December	0	0	0	551	521	-	
TOTAL	207881	179960	200065	226097	206133	-8.8	

Cruise Ship Calls	165	156	145	156	157
-------------------	-----	-----	-----	-----	-----

* Including ship/air visitors

TOURIST ACCOMMODATION (Rooms)

Type of Accommodation	2000	2001	2002	2003	2004
Hotels	n.a	2402	2859	n.a	n.a
Cottage Colonies	n.a	479	212	n.a	n.a
Guest Houses	n.a	101	68	n.a	n.a
Clubs/Other	n.a	355	112	n.a	n.a
Total	3339	3337	3251	2073	2939

Source Bermuda Department of Tourism