

HAITI

Visitor Arrival Summary

Tourist arrivals for Haiti was unavailable for the entire year in 2004. For 2003, CTO estimated that total arrivals was around 110.2 thousand, representing decline of 22.6 percent when compared to 2002.

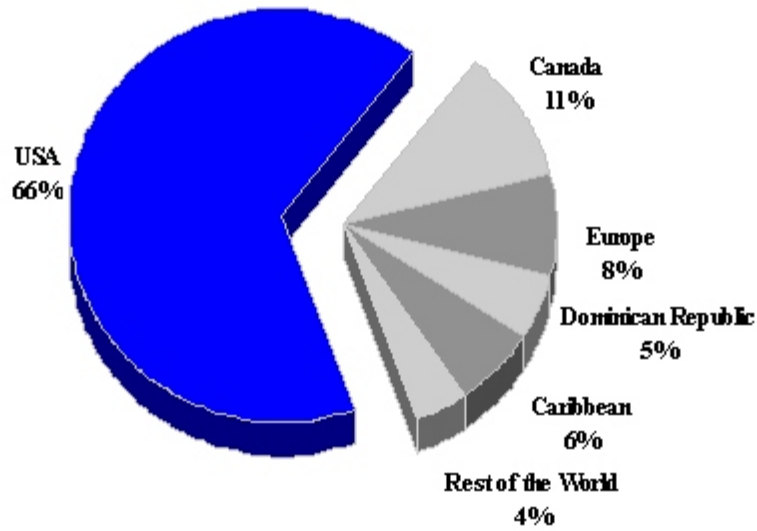
◆ **Data for the performance of the major market were unavailable in 2003..**

TOURISM HIGHLIGHTS FOR 2004

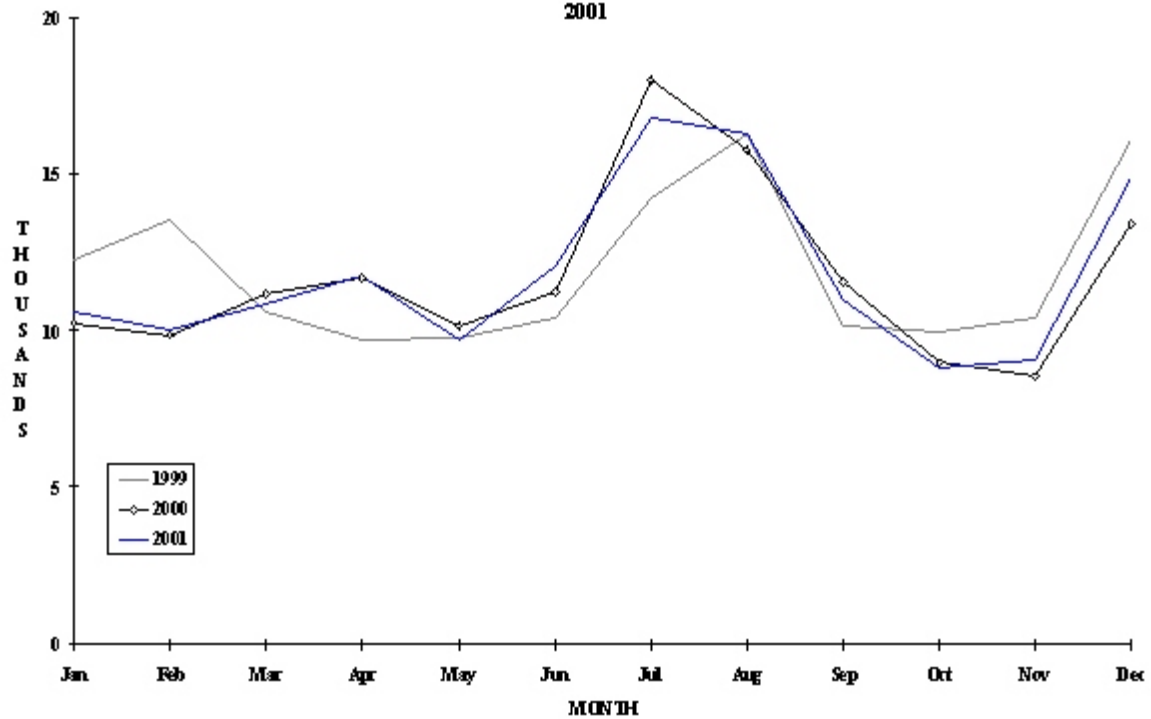
VISITOR ARRIVALS			
Tourist Arrivals ^{III} ➔	108,868	Cruise Passengers ^{III}	357,442
➔ <i>Summer</i>	69.5%	➔ <i>Summer</i>	67.5%
➔ <i>Winter</i>	30.5%	➔ <i>Winter</i>	32.5%
VISITOR PROFILE			
Tourist Arrivals by Purpose of Visit ^{VI}		Tourist Arrivals by Place of Stay ^{VI}	
➔ <i>Holiday</i>	31.0%	➔ <i>Hotels</i>	37.1%
➔ <i>Business</i>	18.0%	➔ <i>Private/Unregistered</i>	62.9%
➔ <i>Other</i>	51.0%		
TOURISM AND OTHER RELATED SOCIO-ECONOMIC STATISTICS			
Total Expenditure (US\$ millions) ^{III}	\$54	GDP at Factor Cost (US\$ millions) ^{III}	\$482.9
Consumer Price Index (% ch. 2002/'01)	9.9%	Hotel and Restaurant contribution to GDP ^{II}	25.3%
ACCOMMODATION STATISTICS		SOCIO-ECONOMIC STATISTICS	
Rooms ^{IX}	1,758	Land Area (square Kilometres)	27,750
		Population (thousand mid year 2001)	8,131.5

HAITI

**TOURIST ARRIVALS BY MAIN MARKETS
2000**



**MONTHLY TOURIST ARRIVALS
2001**



TOURIST ARRIVALS BY COUNTRY OF RESIDENCE

Country of Residence	1998	1999	2000	2001	% Share	
					2002	2002
United States	93978	92543	92921	n.a	n.a	n.a
Canada	15489	15955	14752	n.a	n.a	n.a
France	6984	6318	6420	n.a	n.a	n.a
Other Europe	6623	5465	4540	n.a	n.a	n.a
Dom. Republic	7905	6769	7034	n.a	n.a	n.a
Other Caribbean	9020	9872	9017	n.a	n.a	n.a
Latin America	4993	4054	4023	n.a	n.a	n.a
Rest of World	1845	2386	1785	n.a	n.a	n.a
TOTAL	146837	143362	140492	141634	n.a	n.a

MONTHLY TOURIST ARRIVALS

Month	1998	1999	2000	2001	% change	
					2002	2002/01
January	13607	12199	10242	10564	10102	-4.4
February	12468	13541	9829	10040	9473	-5.6
March	9976	10622	11148	10834	9985	-7.8
April	10527	9695	11683	11759	12325	4.8
May	10036	9736	10163	9708	9589	-1.2
June	10103	10401	11235	12032	12921	7.4
July	17557	14196	17991	16766	15986	-4.7
August	12761	16312	15750	16259	17958	10.5
September	8987	10133	11536	10970	10529	-4.0
October	9495	9968	8986	8814	n.a	-
November	11385	10436	8530	9059	n.a	-
December	19935	16123	13399	14829	n.a	-
TOTAL *	146837	143362	140492	141634	n.a	-

MONTHLY CRUISE PASSENGER ARRIVALS

Month	1998	1999	2000	2001	% change	
					2002	2002/01
January	22613	20920	25088	30722	31019	1.0
February	20550	19471	24827	26949	27278	1.2
March	27822	20474	22706	27510	30167	9.7
April	16822	21127	22259	31004	31986	3.2
May	19054	21521	31282	34713	20354	-41.4
June	24520	22334	19773	28597	27984	-2.1
July	16946	19774	25900	32990	32626	-1.1
August	21960	26739	26956	32696	32459	-0.7
September	13834	15658	21858	24028	31734	32.1
October	16265	18302	27679	26762	n.a	-
November	20726	19453	28565	30974	n.a	-
December	25109	17552	27623	30497	n.a	-
TOTAL	246221	243325	304516	357442	n.a	n.a

TOURIST ARRIVALS BY PLACE OF STAY

PLACE OF STAY	1998	1999	2000	2001	2002
Hotels	n.a	n.a	n.a	n.a	n.a
Private Accommodation	n.a	n.a	n.a	n.a	n.a
Total	146837	143362	140492	141634	n.a

Source: *Secrétairerie D'état Au Tourisme, Haiti*