

PUERTO RICO

Visitor Arrival Summary

The Puerto Rico Tourism Company provides information on hotel registrations in Puerto Rico. This data represents around one third of the total tourist arrivals to Puerto Rico. Official tourist arrivals data for this destination is available only for fiscal years which run from July-June. These estimates are provided by the Puerto Rico Planning Board. CTO in section three of the report has estimated a calendar total for tourist arrivals to Puerto Rico to facilitate the comparative analysis of the Caribbean tourism performance.

The Puerto Rico Planning Board estimates that for the fiscal year June 2002/03 total tourist arrivals to Puerto Rico increased by 4.9 percent.

- ◆ Non-resident hotel registrations are used as a proxy to gauge the market distribution of tourists to the destination. Reported registrations from the United States increased by 4.0 percent and accounted for 87.0 percent of total registrations. Following two years of declining numbers, tourists from Europe and Caribbean registering at hotels increased by 3.8 percent and 12.9 percent respectively, in 2003.
- ◆ Some 1,235.8 thousand cruise passengers visited Puerto Rico in 2003, an increase of 2.6 percent when compared to 2002. Passengers arriving during the winter season dropped by 9.4 percent while those in the summer (58.1 percent of the total) jumped by 13.5 percent.

TOURISM HIGHLIGHTS FOR 2003

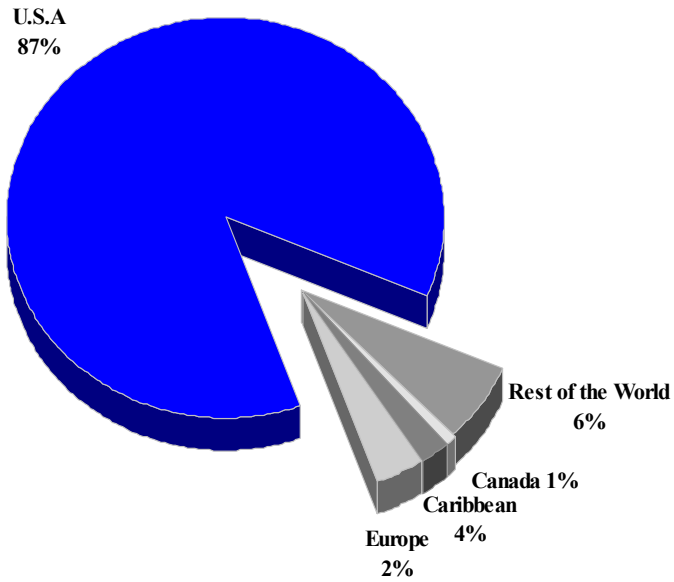
VISITOR ARRIVALS			
Tourist Arrivals ^e ('000) ➔	3,346,628	Cruise Passengers	1,235,766
➔ <i>Summer</i> *	62.1%	➔ <i>Summer</i>	58.1%
➔ <i>Winter</i> *	37.9%	➔ <i>Winter</i>	41.9%
		Cruise Calls	539
ACCOMMODATION STATISTICS		VISITOR PROFILE	
Hotel Registrations	1,324,968	Average Length of Stay (<i>nights</i>)	2.5
Rooms ^{II}	12,753	Tourist Arrivals by Place of Stay	
Room Occupancy Rates	67.0%	➔ <i>Hotels & Guest House</i>	38.3%
		➔ <i>Private/Unregistered/Other</i>	61.7%
TOURISM AND OTHER RELATED SOCIO-ECONOMIC STATISTICS			
Total Expenditure (<i>US\$ millions</i>)	\$2,676.6	Tourism Budget (<i>US\$ '000's</i>) ^F	\$172,999
Hotel & Restaurant contribution to GDP	0.8%	GDP at Factor Cost (<i>US\$ millions</i>)	\$74,362.4
Consumer Price Index (% ch. 2003/'02)	7.9%	Land Area (<i>square Kilometres</i>)	8,874.7
		Population (<i>thousand mid year 2003</i>)	3,878.5

^F - fiscal estimate July 2002 - June 2003

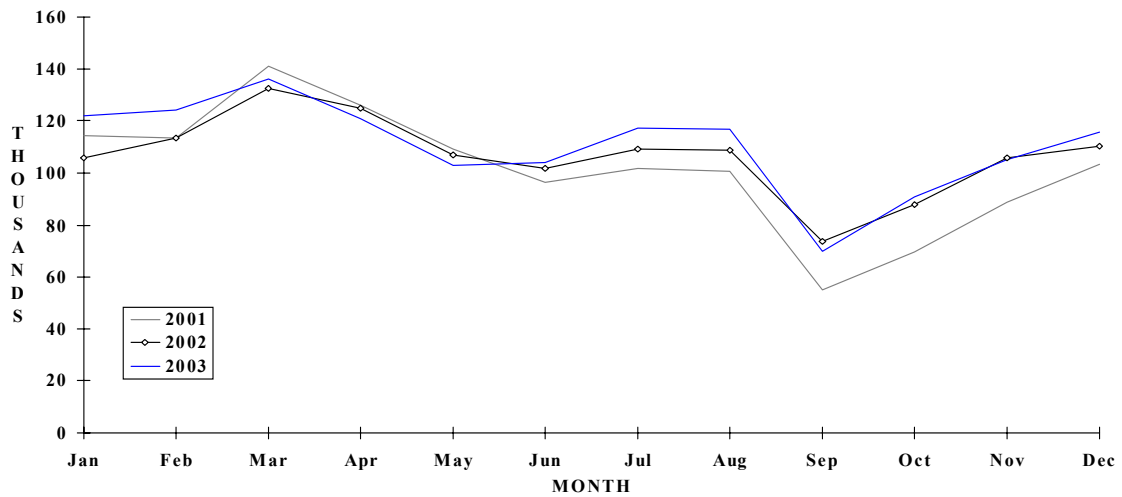
* Seasonal distribution based on reported hotel registrations of non-residents only.

PUERTO RICO

HOTEL REGISTRATIONS BY MAIN MARKETS 2003



MONTHLY HOTEL REGISTRATIONS



VISITOR ARRIVALS BY CATEGORY (FISCAL YEAR - JULY TO JUNE)

	1999	2000	2001	2002	2003
Total Tourist	3024.1	3341.4	3551.2	3087.1	3238.4
Same Day Arrivals	1197.2	1224.6	1356.6	1277.0	1163.9
Total	4221.3	4566.0	4907.8	4364.1	4402.3

Source: The Puerto Rico Planning Board

**NON-RESIDENT HOTEL REGISTRATIONS* BY MAIN COUNTRY OF RESIDENCE
(Calendar Years)**

Country of Residence	1999	2000	2001 ^r	2002	2003	% Share 2003
United States	875121	980037	1033561	1108249	1152747	87.0
Canada	9744	12638	14778	12230	13627	1.0
Europe	32704	28505	37271	28866	29965	2.3
Caribbean	42878	46745	43626	40794	46059	3.5
Other Countries**	129508	110942	89662	90011	82570	6.2
TOTAL	1089955	1178867	1218898	1280150	1324968	100.0

** Includes hotels which did not report the origin of guests

MONTHLY HOTEL REGISTRATIONS * BY NON-RESIDENTS

Month	1999	2000	2001 ^r	2002	2003	% Change 2003/02
January	112126	98933	114236	105638	121810	15.3
February	108452	112468	113658	113371	124008	9.4
March	114582	117275	140832	132651	136126	2.6
April	103037	112745	126131	124715	120706	-3.2
May	88607	96233	108947	106764	102822	-3.7
June	83336	85525	96158	101757	104126	2.3
July	91915	97074	101925	109026	117013	7.3
August	85239	98338	100747	108590	116662	7.4
September	60786	68817	54745	73726	69895	-5.2
October	72200	82343	69703	87838	90778	3.3
November	86419	101515	88716	105703	105251	-0.4
December	83256	107601	103100	110371	115771	4.9
TOTAL	1089955	1178867	1218898	1280150	1324968	3.5

* Reporting hotels only; Includes Paradores (County Inns) but excludes condominiums; also excludes airline crew members

PUERTO RICO

CRUISE PASSENGER ARRIVALS

Month						% Change	
	1999	2000	2001	2002	2003	2003/02	
January	138763	153420	175624	160021	121160	-24.3	
February	117779	142663	153539	141684	124298	-12.3	
March	146115	152025	164396	151647	144815	-4.5	
April	118980	142128	153221	117476	126909	8.0	
May	58745	64639	58742	56742	63159	11.3	
June	62175	60011	64127	67576	75093	11.1	
July	58872	60941	71480	71232	67761	-4.9	
August	64348	58754	69940	60940	73264	20.2	
September	39550	61302	57336	51075	62384	22.1	
October	72807	91589	90000	77302	80337	3.9	
November	137250	143795	136347	101739	143142	40.7	
December	133196	170589	155565	146466	153444	4.8	
TOTAL	1148580	1301856	1350317	1203900	1235766	2.6	

Other Cruise Statistics

	Fiscal Year*					
	1997/98	1998/99	1999/00	2000/01	2001/02	2002/03
Total Passengers*	1265622	1195705	1220909	1356619	1276301	1164199
Cruise Ship calls	701	677	689	680	625	539

TOURIST ACCOMMODATION (Rooms)**

Type of Accommodation	CALENDAR YEAR				
	1999	2000	2001	2002	2003
Hotels	9010	9787	9973	10157	
Guest Houses	395	407	450	505	
Paradores	958	957	963	1061	
Other	739	777	967	1045	
TOTAL	11102	11928	12353	12768	

* Fiscal year (July to June)

** Hotels endorsed by Puerto Rico Tourism Company only; as at end June

Source: Commonwealth of Puerto Rico Tourism Company.