

## SABA

### Visitor Arrival Summary

Air arrivals to Saba in 2003 decreased by 14.3 percent while sea arrivals increased by 21.5 percent. The net result was a decrease of 4.8 percent in total arrivals when compared to 2002. This translated to Saba hosting 10.3 thousand tourists in 2003.

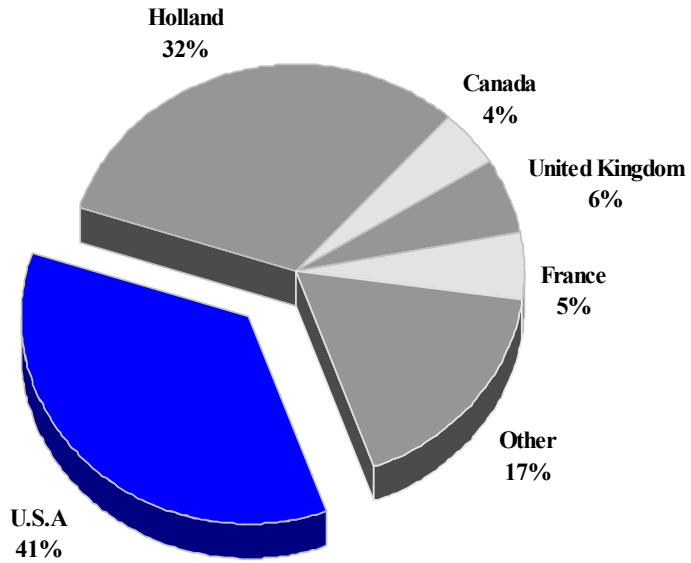
- ◆ Despite registering a decline in arrivals of 2.3 percent, the United States maintained its position as the main market for arrivals to Saba. Arrivals from the Netherlands, the second largest market increased but only marginally. The 2003 performances of the smaller markets, each with a market share of approximately 5 percent, varied. While arrivals from Canada and France fell by 29.6 percent and 3.8 percent respectively, those originating in the United Kingdom jumped by 23.4 percent when compared to 2002.

### TOURISM HIGHLIGHTS FOR 2003

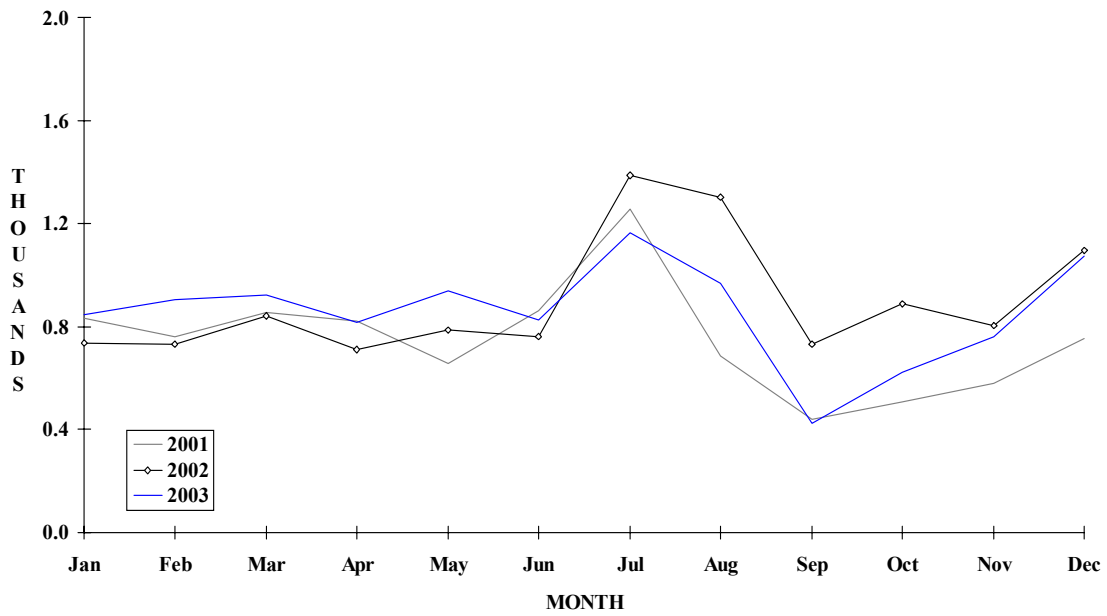
VISITOR ARRIVALS			
Tourist Arrivals → → <i>Summer</i> → <i>Winter</i>	10,261 66.0% 34.0%	Same Day Visitors	11,130
ACCOMMODATION STATISTICS		SOCIO-ECONOMIC STATISTICS	
Rooms <sup>ii</sup>	85	Tourism Budget (US\$ '000) <sup>v</sup>	\$274
		Land Area (square Kilometres)	13
		Population (thousand mid year 2002)	1.4

# SABA

## TOURIST ARRIVALS BY MAIN MARKETS 2003



## MONTHLY TOURIST ARRIVALS



## VISITOR ARRIVALS BY CATEGORY

Category	1999	2000	2001	2002	% Share	
					2003	2003
Air Arrival Tourists	6942	6236	5894	7921	6790	31.7
Same-day visitors*	15024	15287	9647	6614	11130	52.0
Sea Tourists	2310	2884	3111	2857	3471	16.2
<b>TOTAL</b>	<b>24276</b>	<b>24407</b>	<b>18652</b>	<b>17392</b>	<b>21391</b>	<b>100.0</b>

\* Mainly day trippers from St Maarten

## TOURIST ARRIVALS BY COUNTRY OF RESIDENCE

Country of Residence *	1999	2000	2001	2002	% Share	
					2003	2003
Holland/Antilles	2798	2618	2658	3233	3245	31.6
United States	3881	3740	3452	3741	3656	35.6
Canada	243	337	401	639	450	4.4
United Kingdom	366	414	353	479	591	5.8
France	484	434	453	573	551	5.4
Other Countries	1480	1577	1688	2113	1768	17.2
<b>TOTAL</b>	<b>9252</b>	<b>9120</b>	<b>9005</b>	<b>10778</b>	<b>10261</b>	<b>100.0</b>

\* Nationality is used as a proxy

## MONTHLY TOURIST ARRIVALS

Month	1999	2000	2001	2002	% Change	
					2003	2003/02
January	864	668	833	737	844	14.5
February	797	850	759	733	904	23.3
March	1373	1027	856	843	923	9.5
April	875	897	822	710	818	15.2
May	878	729	654	787	939	19.3
June	786	685	861	763	826	8.3
July	1157	1074	1256	1385	1162	-16.1
August	675	597	684	1302	968	-25.7
September	484	472	440	730	424	-41.9
October	471	488	508	890	620	-30.3
November	487	781	579	803	761	-5.2
December	405	852	753	1095	1072	-2.1
<b>TOTAL</b>	<b>9252</b>	<b>9120</b>	<b>9005</b>	<b>10778</b>	<b>10261</b>	<b>-4.8</b>

*\*Includes other visitors*

## TOURIST ACCOMMODATION (Rooms)

Rooms	1999	2000	2001	2002	2003
	87	80	85	n.a	n.a

*Source: Saba Tourist Bureau*