

ST. EUSTATIUS

Visitor Arrival Summary

By the end of 2004, air visitor arrivals, inclusive of residents, to St. Eustatius stood at 21.02 thousand; 4.7 percent more than in 2003. Of this number, tourist arrivals totaled 11.1 thousand which was an increase of 6.0 percent. Antilleans which include residents rose by 3.3 percent.

- ◆ Tourist arrivals out of Holland, the most important market for this destination with a share of 36.2 percent, grew by 2.0 percent. Arrivals from the other main source of tourists also increased in 2004, including the United States (3.6 percent); Other European countries (13.7 percent) and Canada (14.7 percent). Collectively, all other countries accounted for 26.0 percent of total air arrivals and rose by 9.9 percent.
- ◆ Some 6.1 thousand sea arrivals were in St. Eustatius for 2004. This performance meant that for the second consecutive year, this sector expanded. The growth was calculated to be 4.7 percent when compared to the 2003 level.

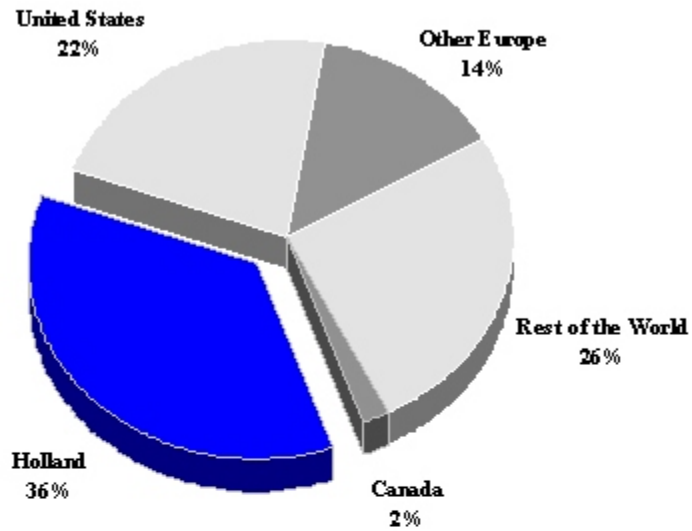
TOURISM HIGHLIGHTS FOR 2004

VISITOR ARRIVALS			
Tourist Arrivals ✈	11,076	Sea Arrivals	6,117
➡ <i>Summer</i> *	68.8%	➡ <i>Summer</i>	52.3%
➡ <i>Winter</i> *	31.2%	➡ <i>Winter</i>	47.7%
		Yacht Arrivals	708
ACCOMMODATION STATISTICS		SOCIO-ECONOMIC STATISTICS	
Rooms ^V	62	Land Area (<i>square Kilometres</i>)	21
		Population (<i>thousand mid year 2004</i>)	2.5

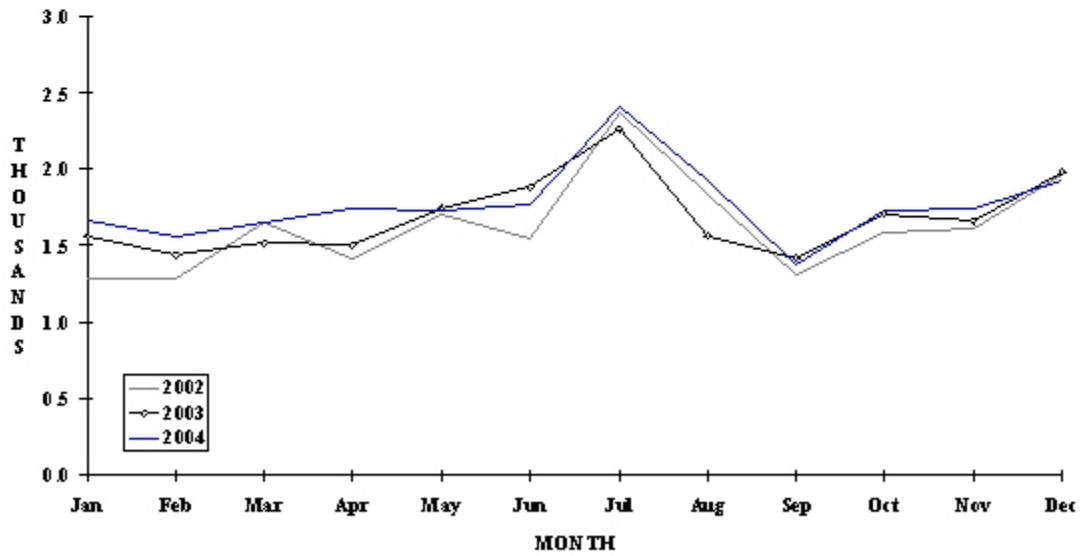
* Based on Total Air Arrivals

ST EUSTATIUS

**TOURIST ARRIVALS BY MAIN MARKETS
2004**



MONTHLY VISITOR ARRIVALS



* Total Visitor Arrivals includes Antilleans

ST EUSTATIUS

VISITOR AIR ARRIVALS BY NATIONALITY*

Nationality	2000	2001	2002	2003	% Share	
					2004	2004
United States	2101	2237	2371	2378	2463	22.2
Canada	155	195	192	184	211	1.9
Holland	2678	3112	3305	3930	4009	36.2
Other Europe	1310	1387	1295	1337	1516	13.7
Rest of the World	2686	2666	2618	2617	2877	26.0
TOTAL TOURISTS	8930	9597	9781	10446	11076	100.0
Antillean **	10156	9998	9771	9795	10121	
TOTAL AIR VISITORS	19086	19595	19552	20241	21197	

*Includes same-day visitors and returning residents

**Includes residents of St Eustatius

MONTHLY VISITOR AIR ARRIVALS

Month	2000	2001	2002	2003	% Change	
					2004	2004/03
January	1491	1618	1279	1565	1659	6.0
February	1365	1369	1286	1440	1560	8.3
March	1584	1614	1652	1513	1645	8.7
April	1352	1515	1418	1502	1740	15.8
May	1716	1690	1700	1746	1729	-1.0
June	1646	1593	1540	1887	1770	-6.2
July	2212	2107	2366	2263	2410	6.5
August	1543	1695	1838	1563	1917	22.6
September	1353	1383	1308	1417	1374	-3.0
October	1440	1485	1590	1709	1728	1.1
November	1467	1801	1613	1656	1738	5.0
December	1917	1725	1962	1985	1927	-2.9
TOTAL	19086	19595	19552	20246	21197	4.7

ST EUSTATIUS

MONTHLY VISITOR SEA ARRIVALS

Month	2000	2001	2002	2003	% Change	
					2004	2004/03
January	216	2333	579	680	553	-18.7
February	840	2022	357	1269	726	-42.8
March	725	1194	1054	948	894	-5.7
April	406	1017	813	345	744	115.7
May	513	435	494	239	491	105.4
June	697	1040	330	342	268	-21.6
July	668	1517	532	79	354	348.1
August	167	57	310	200	334	67.0
September	128	12	269	221	115	-48.0
October	491	224	119	247	134	-45.7
November	1372	385	543	272	409	50.4
December	2081	269	936	506	1095	116.4
TOTAL	8304	10505	6336	5348	6117	14.4
Yacht Arrivals	742	749	663	610	708	

TOURIST ACCOMMODATION (Rooms)

Rooms	1999	2000	2001	2002	2003
Total	62	n.a	n.a	n.a	n.a

Source: St. Eustatius Development Foundation