

## ST. MAARTEN

### Visitor Arrival Summary

Tourist arrivals to St. Maarten increased by 11.1 percent to reach 475.0 thousand. This was the second consecutive year of growth and the highest number of arrivals since 1995. The arrivals in the winter season rose by 19.1 percent, with each month posting an increase of 15.0 percent or higher. The summer period which accounted for 60.1 percent, had growth of 6.3 percent.

- ◆ Arrivals from all markets increased in 2004. The United States, the largest market for St. Maarten (52.9 percent of arrivals), had an increase in arrivals of 13.0 percent. The overall growth from the European market was 9.2 percent which was led by more tourists coming from France (up 5.6 percent) and Holland (up 20.4 percent). Total arrivals from the Caribbean rose 10.5 percent and accounted for 12.7 percent of all arrivals.
- ◆ In 2004, St. Maarten registered a 15.1 percent rise in total cruise passenger arrivals. The number of arrivals were 1,348.5 thousand. Significant increases of 8.0 percent or great were recorded in each month with the exception of August and September where numbers declined by 1.6 and 18.3 respectively. Cruise ship calls were 69 more than the 597 calls that were made in 2003.

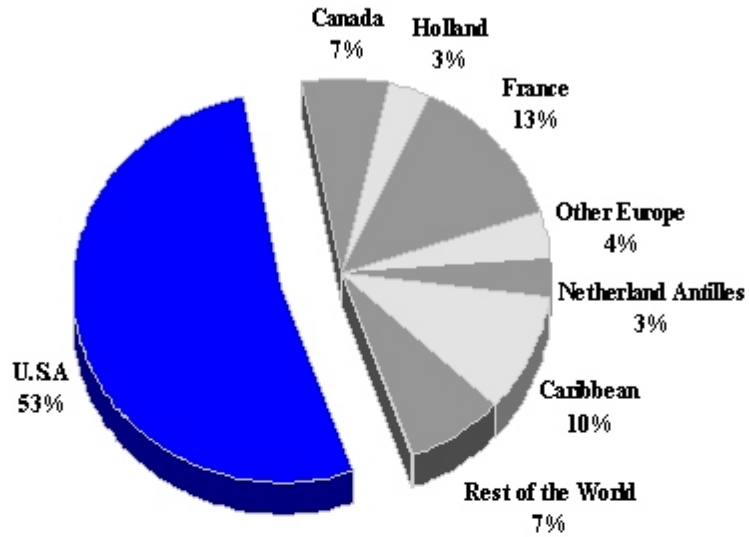
### TOURISM HIGHLIGHTS FOR 2004

VISITOR ARRIVALS			
Tourist Arrivals ➔	475,031	Cruise Passengers	1,348,450
➔ <i>Summer</i>	60.1%	➔ <i>Summer</i>	57.0%
➔ <i>Winter</i>	39.9%	➔ <i>Winter</i>	43.0%
Average Length of Stay ( <i>nights</i> )	n.a.	Cruise Ship Calls	666
TOURISM AND OTHER RELATED ECONOMIC STATISTICS			
Total Expenditure ( <i>US\$ millions</i> ) *	\$612.8	Consumer Price Index ( <i>%ch 2004/'03</i> )	2.1%
Tourism Budget ( <i>US\$ thousands</i> ) <sup>b</sup>	\$5,003		
ACCOMMODATION STATISTICS		SOCIO-ECONOMIC STATISTICS	
Rooms <sup>II</sup>	3,532	Land Area ( <i>square Kilometres</i> )	34
Room Occupancy Rates	59.3%	Population ( <i>thousand mid year 2004</i> )	33.2

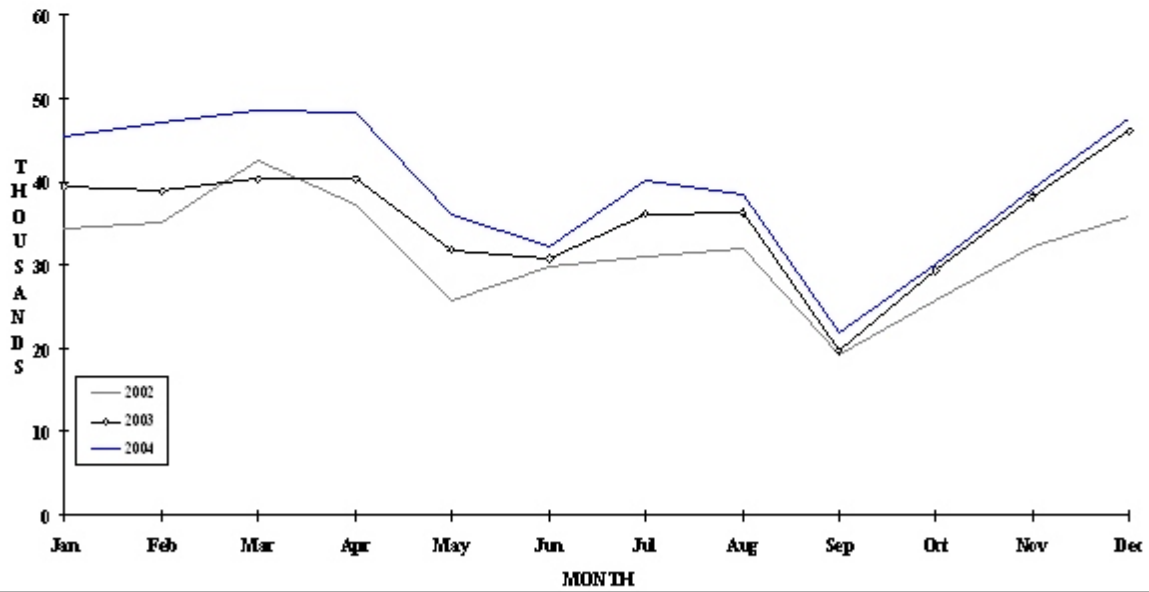
\* Includes Visitor Expenditure for Saba and St. Eustatius

# ST. MAARTEN

**TOURIST ARRIVALS BY MAIN MARKETS  
2004**



**MONTHLY TOURIST ARRIVALS**



## TOURIST ARRIVALS BY NATIONALITY\*

Nationality	2000	2001	2002	2003	2004	% Share
						2004
United States	187786	192898	191908	222247	251156	52.9
Canada	28470	25093	23460	29545	31667	6.7
Holland	10420	10186	9187	12918	15554	3.3
France**	89803	69806	62457	58801	62109	13.1
Other Europe	21596	17457	15503	16540	18740	3.9
Neth. Antilles	15235	14586	13475	14742	15505	3.3
Other Caribbean	31260	31652	33371	39913	44906	9.5
Rest of World	47722	40971	31440	32881	35394	7.5
<b>TOTAL</b>	<b>432292</b>	<b>402649</b>	<b>380801</b>	<b>427587</b>	<b>475031</b>	<b>100.0</b>

\*By air, including persons destined for St Martin (the French side of the island); Excludes inter-Antillean arrivals

\*\*Includes citizens of the French West Indies.

## MONTHLY TOURIST ARRIVALS\*

Month	1999	2000	2001	2002	2003	% Change
						2004/03
January	50664	39891	43220	34247	39441	15.2
February	47249	42758	44068	35012	38927	11.2
March	48693	42590	46643	42535	40297	-5.3
April	47023	45865	45523	37382	40344	7.9
May	35038	31072	30633	25734	31833	23.7
June	29251	30724	29112	29789	30845	3.5
July	41357	38599	33782	31040	36133	16.4
August	36205	33776	31323	31986	36380	13.7
September	21096	20891	16209	19330	19613	1.5
October	30724	26091	22487	25809	29445	14.1
November	25541	35400	28723	32111	38194	18.9
December	31983	44635	30926	35826	46135	28.8
<b>TOTAL</b>	<b>444824</b>	<b>432292</b>	<b>402649</b>	<b>380801</b>	<b>427587</b>	<b>12.3</b>

\*Arrivals at Juliana Airport (includes visitors destined for St Martin)

## CRUISE PASSENGER ARRIVALS

Month						% Change
	2000	2001	2002	2003	2004	2004/03
January	93314	121093	118939	134540	147680	9.8
February	91657	119710	101410	117452	141009	20.1
March	109878	105366	112664	121033	158411	30.9
April	84020	100981	91992	122066	133212	9.1
May	51424	50048	54643	60364	75237	24.6
June	39831	42704	59847	52064	87210	67.5
July	40299	45441	73250	65496	80113	22.3
August	45189	43619	69138	62565	61555	-1.6
September	44306	22347	57617	50126	40933	-18.3
October	56560	44455	78457	70740	81510	15.2
November	104060	74847	105529	142956	154391	8.0
December	107780	97141	131554	172332	187189	8.6
<b>TOTAL</b>	<b>868318</b>	<b>867752</b>	<b>1055040</b>	<b>1171734</b>	<b>1348450</b>	<b>15.1</b>

<b>Number of Calls</b>	492	507	531	597	666
------------------------	-----	-----	-----	-----	-----

## TOURIST ACCOMMODATION (Rooms)

Type of Accommodation	2000	2001	2002	2003	2004
Hotels	1543	1543	n.a	n.a	n.a
Guest Houses	143	146	n.a	n.a	n.a
Villas/Condos/Apartments	95	95	n.a	n.a	n.a
Other	1764	1764	n.a	n.a	n.a
<b>Total</b>	<b>3545</b>	<b>3548</b>	<b>3532</b>	<b>n.a</b>	<b>n.a</b>

*Note: The number of rooms in French St Martin was 2903 in 1995 (See Guadeloupe)*

*Source: St. Maarten Tourist Bureau*