

SURINAME

Visitor Arrival Summary

During the 2003, the computer software system, Management Information System for Tourism (MIST) was installed in Suriname. Actual data is available from the second half of the year. A total of 188.6 thousand travelers (including Suriname residents) were recorded at the four ports; Zanferij and Zorg en Hoop Airports and Albina and Nickerie Seaports. Of this total, 137.8 were classified to be tourists.

- ◆ Holland (the Netherlands) constituted Suriname's largest tourist market with 82.2 thousand arrivals, a total share 59.7 percent. The second largest market was the Caribbean with a share of 16.1 percent or 22.2 thousand tourists. Arrivals from South America to this destination in 2004 were 18.1 thousand,3..

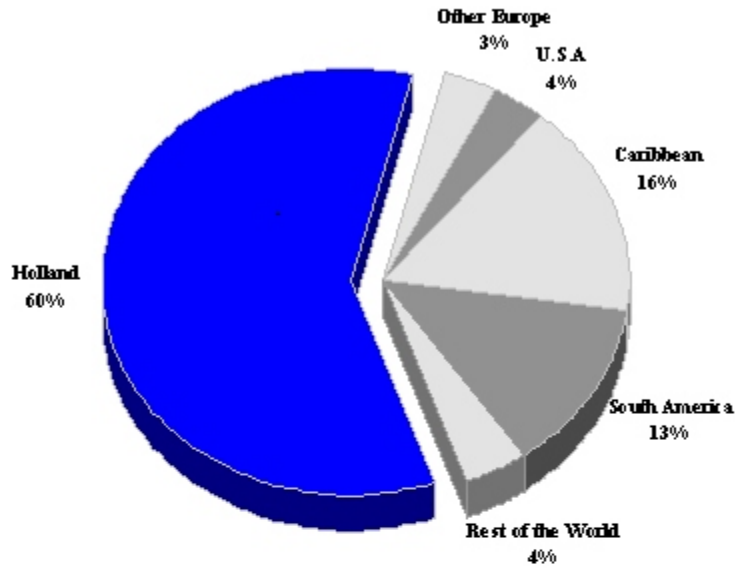
TOURISM HIGHLIGHTS FOR 2004

VISITOR ARRIVALS			
Air Arrivals ^e ✈	102,553	Sea Arrivals	n.a.
VISITOR PROFILE			
Tourist Arrivals by Purpose of Visit		Tourist Arrivals by Place of Stay *	
➤ <i>Holiday</i>	83.8%	➤ <i>Hotels</i>	11%
➤ <i>Business</i>	9.4%	➤ <i>Private/Unregistered</i>	40%
➤ <i>Other</i>	6.8%	➤ <i>Friend/not specified</i>	49%
TOURISM AND OTHER RELATED ECONOMIC STATISTICS			
Total Expenditure (US\$ millions) ^{III}	\$50.0	GDP at Factor Cost (US\$ millions)	\$1,128.1
ACCOMMODATION STATISTICS		SOCIO-ECONOMIC STATISTICS	
Number of rooms ^{VII}	1,276	Land Area (thousand square Kilometres)	163.8
		Population (thousand mid year 2001)	441.4

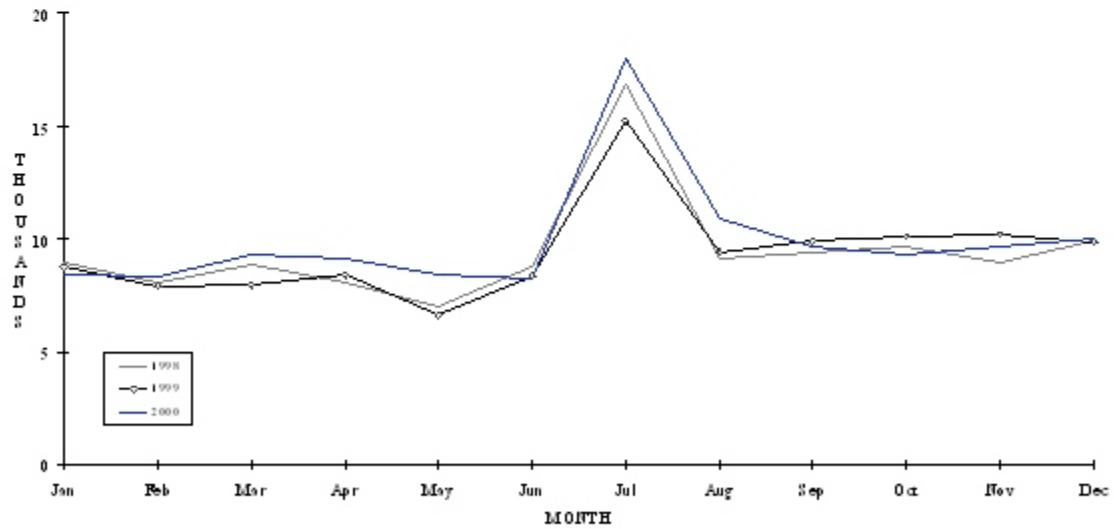
* Based on 2000 visitor survey

SURINAME

TOURIST ARRIVALS BY MAIN MARKETS 2004



MONTHLY TOURIST ARRIVALS



SURINAME

VISITOR ARRIVALS BY CATEGORY

Category	2000	2001	2002	2003 ⁿ	2004	% Share 2004
Air Arrivals	56843	n.a	n.a	n.a	n.a	n.a
Sea Arrivals *	15373	n.a	n.a	n.a	n.a	n.a
Total	72216	n.a	n.a	** 96019	188622	n.a

ⁿ New series

* Arrivals at Nieuw Nickerie Harbour

** June - Dec only

TOURIST AIR ARRIVALS BY NATIONALITY

Country of Residence	2000	2001	2002	2003 ⁿ	2004	% Share 2004
United States	712	n.a	n.a	2442	4994	3.6
Canada	189	n.a	n.a	n.a	n.a	0.0
Holland	45137	n.a	n.a	48086	82215	59.7
Other Europe	1148	n.a	n.a	1276	4698	3.4
South America	2274	n.a	n.a	7586	18143	13.2
Caribbean	4687	n.a	n.a	8469	22194	16.1
Rest of World	2696	n.a	n.a	3642	5564	4.0
TOTAL	56843	n.a	n.a	** 71501	137808	100.0

SURINAME

MONTHLY AIR ARRIVALS*

Month						% Change	
	2000	2001	2002	2003 ⁿ	2004	2004/03	
January	8417	n.a	n.a	n.a.	7286	-	
February	8295	n.a	n.a	n.a.	11497	-	
March	9561	n.a	n.a	n.a.	11138	-	
April	9163	n.a	n.a	n.a.	10848	-	
May	8403	n.a	n.a	n.a.	9128	-	
June	8235	n.a	n.a	12343	9971	-19.2	
July	17948	n.a	n.a	16567	17784	7.3	
August	10865	n.a	n.a	7618	13151	72.6	
September	9667	n.a	n.a	4678	9509	103.3	
October	9276	n.a	n.a	8317	11142	34.0	
November	9632	n.a	n.a	8963	11054	23.3	
December	9953	n.a	n.a	12995	15300	17.7	
TOTAL	119415	n.a	n.a	** 71481	137808	-	

* Includes Surinamese residents

55093	62272	n.a	-	-
-------	-------	-----	---	---

TOURIST ACCOMMODATION (Rooms)

Type of Accommodation	2000	2001	2002	2003	2004
Hotels	n.a	n.a	n.a	n.a	n.a
Guest Houses	n.a	n.a	n.a	n.a	n.a
TOTAL	1276	n.a	n.a	n.a	n.a

Source: Suriname Tourism Foundation