

## BONAIRE

### Visitor Arrival Summary

In 2004, Bonaire enjoyed its third consecutive year of growth in stay-over arrivals reaching 63.2 thousand tourists; an increased of 1.6 percent when compared to 2003. Arrivals during the winter season to this destination accounted for 38.2 percent and rose by 11.5 percent, whereas the summer season arrivals represented 61.8 percent decreased by 3.7 percent.

- ◆ Bonaire was able to achieve an increase in business from the United States, its main market (accounted for 41.9 percent of total arrivals in 2004), of 4.9 percent when compared to 2003. Tourists from Holland numbered 19.6 thousand, 1.9 percent less than those of 2003. Fewer tourists also came from Germany and Venezuela, each of which has a market of approximately 3 percent. Increase number of tourists of arrived from Canada and Aruba, a market which has been growing in share over the last three years.
- ◆ A total of 53.3 thousand cruise passengers Bonaire in 2004, representing an increase of 19.6 percent against the 44.6 thousand of 2003. Increases above 50 percent were recorded in the month of January, May, June, November and December. There was an associated rise in cruise ship calls of 8.3 percent.

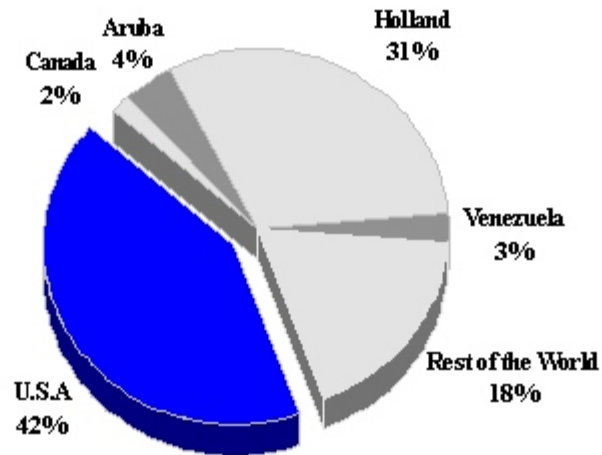
#### TOURISM HIGHLIGHTS FOR 2004

VISITOR ARRIVALS			
Tourist Arrivals ➔	63,156	Cruise Passenger Arrivals	53,343
➔ <i>Winter</i>	38.2%	➔ <i>Winter</i>	55.7%
➔ <i>Summer</i>	61.8%	➔ <i>Summer</i>	44.3%
Same day Visitors	432	Cruise calls	78
VISITOR PROFILE			
Average Length of Stay ( <i>nights</i> )	9.2	<b>Tourist Arrivals by Place of Stay <sup>III</sup></b>	
<b>Tourist Arrivals by Purpose of Visit</b>		➔ <i>Hotels</i>	55.2%
➔ <i>Holiday</i>	97.1%	➔ <i>Guest House/Apartment</i>	31.5%
➔ <i>Business</i>	2.7%	➔ <i>Private/Unregistered</i>	13.0%
➔ <i>Other</i>	0.2%	➔ <i>Other</i>	0.3%
TOURISM AND OTHER RELATED ECONOMIC STATISTICS			
Total Expenditure ( <i>US\$ millions</i> )	\$83.7	Tourism Budget ( <i>US\$ thousands</i> )	\$1,676
		Consumer Price Index ( <i>% ch 2004/'03</i> )	1.8%
ACCOMMODATION STATISTICS		SOCIO-ECONOMIC STATISTICS	
Rooms	1,175	Land Area ( <i>square Kilometres</i> )	288
Occupancy Rate	61.0%	Population ( <i>thousand mid year 2004</i> )	10.2

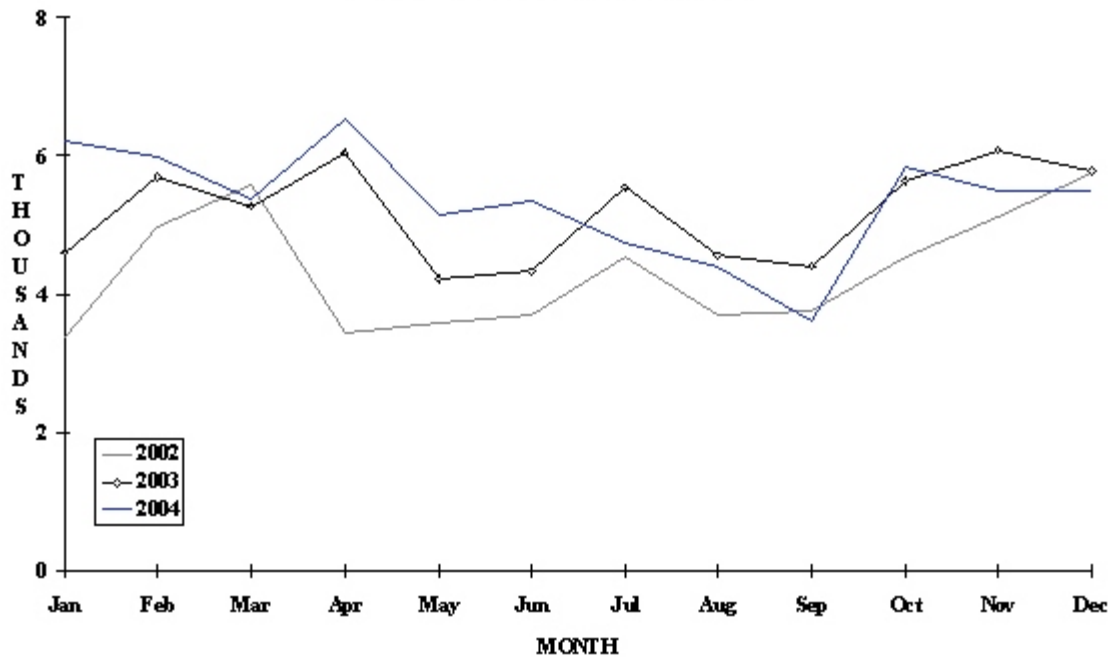
# BONAIRE

## TOURIST ARRIVALS BY MAIN MARKETS

2004



## MONTHLY TOURIST ARRIVALS



## TOURIST ARRIVALS BY COUNTRY OF RESIDENCE \*

Country of Residence	2000	2001	2002	2003	2004	% Share 2004
U.S.A.**	25429	26357	26500	25228	26453	41.9
Canada	1099	1098	593	843	1068	1.7
Aruba	1515	1191	2162	2493	2790	4.4
Holland	13322	11860	12814	19987	19612	31.1
Germany	1841	1511	1602	2236	2052	3.2
Venezuela	3504	3462	2150	1725	1722	2.7
Rest World ***	4559	4916	6265	9667	9459	15.0
<b>TOTAL</b>	<b>51269</b>	<b>50395</b>	<b>52086</b>	<b>62179</b>	<b>63156</b>	<b>100.0</b>

\* Excluding arrivals from Netherlands Antilles

\*\* Including Puerto Rico

\*\*\* Including arrivals from other European countries: 2787 in 2000, 2955 in 2001, 3736 in 2002, 6856 in 2003 and 6539 in 2004.

## MONTHLY TOURIST ARRIVALS

Months	2000	2001	2002	2003	2004	% Change 2004/03
January	5047	5595	3385	4612	6201	34.5
February	4658	5094	4976	5693	5982	5.1
March	5553	5645	5568	5277	5391	2.2
April	5168	5243	3446	6045	6539	8.2
May	4231	3710	3571	4216	5130	21.7
June	3553	3729	3720	4317	4352	0.8
July	4143	4093	4540	5544	4736	-14.6
August	4046	4036	3704	4558	4387	-3.8
September	2981	2661	3766	4401	3624	-17.7
October	3963	3756	4541	5648	5836	3.3
November	4529	3730	5118	6081	5492	-9.7
December	3397	3103	5751	5787	5486	-5.2
<b>TOTAL</b>	<b>51269</b>	<b>50395</b>	<b>52086</b>	<b>62179</b>	<b>63156</b>	<b>1.6</b>

## CRUISE PASSENGERS

Months	2000	2001	2002	2003	2004	% Change
						2004/03
January	10565	8116	7277	7545	11484	52.2
February	6297	6704	7778	8153	9259	13.6
March	8778	9135	7555	8944	5388	-39.8
April	4226	2998	3915	2903	3603	24.1
May	0	72	0	225	346	53.8
June	0	0	348	597	0	-
July	0	78	485	220	574	160.9
August	624	313	860	650	477	-26.6
September	510	621	775	763	390	-48.9
October	1791	1786	1482	890	774	-13.0
November	3018	4719	4812	5101	7715	51.2
December	7668	5993	6894	8610	13333	54.9
<b>TOTAL</b>	<b>14790</b>	<b>40535</b>	<b>42181</b>	<b>44601</b>	<b>53343</b>	<b>19.6</b>
Cruise calls	71	64	81	72	78	

## TOURIST ACCOMMODATION (Rooms)

Type of Accommodation	2000	2001	2002	2003	2004
Hotels	n.a	741	n.a	n.a	n.a
Apartments	n.a	146	n.a	n.a	n.a
Condominiums	n.a	-	n.a	n.a	n.a
Other	n.a	114	n.a	n.a	n.a
<b>TOTAL</b>	<b>1050</b>	<b>1001</b>	<b>1070</b>	<b>1070</b>	<b>1175</b>

Source: Bonaire Government Tourist Bureau