

BRITISH VIRGIN ISLANDS

Visitor Arrival Summary

The British Virgin Islands registered its second consecutive decline in tourist arrivals in 2003, when 278.1 thousand tourists (1.3 percent less in 2002) visited this destination. There was a flat performance in the winter and summer arrivals accounted for 56.7 percent of total arrivals and dropped by 2.4 percent when compared to the same period in 2002.

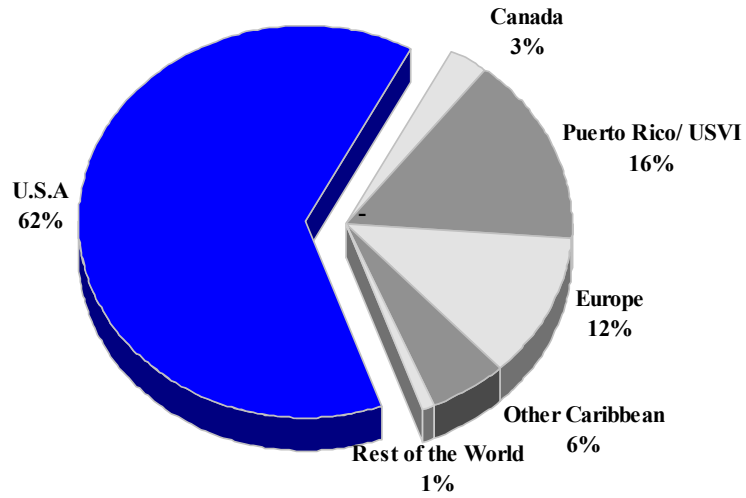
- ◆ Market information for 2003 is unavailable. Estimates done by CTO suggest that the performance of United States and Caribbean, the main markets from which most tourists to this destination originates, were worse than in 2002. Smaller markets like Canada, Europe and South America were estimated to have grown by doubled digit figures.
- ◆ Cruise passenger arrivals to the British Virgin Islands were 230.1 thousand (revised total) in 2002 and 304.3 thousand in 2003. This meant that in 2003 arrivals increased by 32.3 percent.

TOURISM HIGHLIGHTS FOR 2003

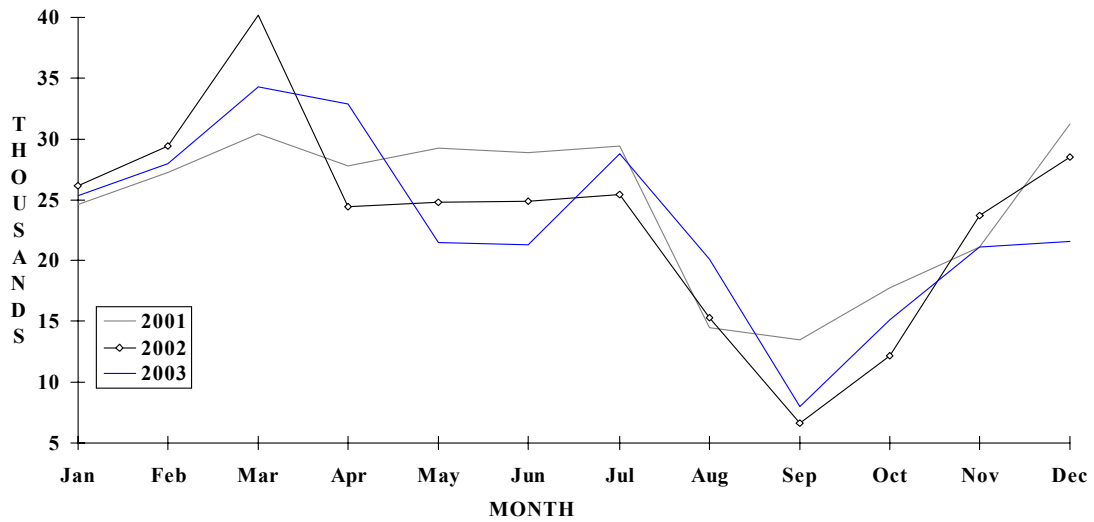
VISITOR ARRIVALS			
Tourist Arrivals →	278,114	Cruise Passengers	304,338
→ <i>Summer</i>	56.7%	→ <i>Summer</i>	44.9%
→ <i>Winter</i>	43.3%	→ <i>Winter</i>	55.1%
Same day visitors	31,566	Cruise Ship calls	n.a
VISITOR PROFILE			
Average Length of Stay (<i>nights</i>) ¹	10.5	Tourist Arrivals by Place of Stay¹	
Tourist Arrivals by Purpose of Visit¹		→ <i>Hotels</i>	20.1%
→ <i>Holiday</i>	96.2%	→ <i>Charter Boats</i>	63.0%
→ <i>Business</i>	1.9%	→ <i>Private</i>	8.4%
→ <i>Other</i>	1.8%	→ <i>Other Accommodation</i>	8.5%
TOURISM AND OTHER RELATED ECONOMIC STATISTICS			
Visitor Expenditure (<i>US\$ millions</i>) ¹	\$353.8	Tourism Budget (<i>US\$ thousands</i>) ^{III}	\$4,115
Hotel and Restaurant contribution to GDP ¹	14.1%	GDP at Factor Cost (<i>US\$ millions</i>) ¹	\$788.5
		Consumer Price Index (<i>%ch. 2002/'01</i>)	0.6%
ACCOMMODATION STATISTICS		SOCIO-ECONOMIC STATISTICS	
Rooms ¹	1,765	Land Area (<i>square Kilometres</i>)	150
Room Occupancy Rates	65.4%	Population (<i>thousand mid year 2003</i>)	21.3

BRITISH VIRGIN ISLANDS

TOURIST ARRIVALS BY MAIN MARKETS
2003^e



MONTHLY TOURIST ARRIVALS



BRITISH VIRGIN ISLANDS

TOURIST ARRIVALS BY COUNTRY OF RESIDENCE

Country of Residence	1999	2000	2001	2002	% Share	
					2003	2003
United States	170229	173225	184408	179876	n.a	n.a
Canada	6837	8468	7394	6307	n.a	n.a
Europe	32614	38619	3361	28765	n.a	n.a
Puerto Rico/USVI	45850	41165	46780	45012	n.a	n.a
Other Caribbean	13127	13415	16882	17417	n.a	n.a
South America	2392	2632	2500	1276	n.a	n.a
Other	14809	3595	4045	3043	n.a	n.a
TOTAL	285858	281119	265370	281696	278114	-

MONTHLY TOURIST ARRIVALS

Month	1999	2000	2001	2002	% Change	
					2003	2003/02
January	27754	31572	24605	26186	25350	-3.2
February	28696	30410	27275	29443	27992	-4.9
March	34502	30618	30409	40178	34225	-14.8
April	31776	32939	27831	24440	32920	34.7
May	24985	21566	29280	24804	21452	-13.5
June	23956	27370	28894	24859	21339	-14.2
July	28101	24895	29383	25462	28833	13.2
August	15301	8916	14458	15285	20109	31.6
September	7759	6696	13443	6638	8049	21.3
October	13575	12168	17719	12189	15114	24.0
November	18988	24750	21118	23696	21099	-11.0
December	30465	29219	31210	28516	21632	-24.1
TOTAL	285858	281119	295625	281696	278114	-1.3

BRITISH VIRGIN ISLANDS

TOURIST ARRIVALS BY TYPE OF ACCOMMODATION

Place of Stay	1999	2000	2001	2002	2003	% Share 2003
Hotel	74888	77412	73714	57085	n.a	n.a
Rented Accom.	28733	21102	19757	22463	n.a	n.a
Own Home/Friends	22811	23434	21612	27301	n.a	n.a
Charter Boats	159426	159171	180542	174847	n.a	n.a
TOTAL	285858	281119	295625	281696	n.a	n.a

CRUISE PASSENGER ARRIVALS

Month	1999	2000	2001	2002	2003	% Change 2003/02
January	28138	26332	30124	41244	37185	-9.8
February	26120	25723	28445	29558	38214	29.3
March	26374	31175	27637	33498	49338	47.3
April	24794	24548	25261	31915	42833	34.2
May	4008	10264	4657	7711	7059	-8.5
June	8971	7140	14200	5365	11544	115.2
July	6405	4305	7322	6279	7510	19.6
August	7403	2939	7058	4222	12620	198.9
September	3319	3550	5939	1707	2875	68.4
October	5769	6962	11677	7714	17342	124.8
November	7812	12903	15050	19268	37879	96.6
December	31601	32680	25147	41586	39939	-4.0
Total	180714	188521	202517	230067	304338	32.3
Cruise ship calls	196	230	256	330	n.a	
Charter yachts	752	805	927	860	n.a	

TOURIST ACCOMMODATION (Rooms on land)

Area	1999	2000	2001	2002	2003
Hotels	1308	1330	1348	1348	n.a
Guest Houses/Apartments	335	331	340	417	n.a
TOTAL	1643	1661	1688	1765	n.a

Source: Development Planning Unit - British Virgin Islands