

DOMINICA

Visitor Arrival Summary

Tourist arrivals to Dominica rose in 2003 for the second consecutive year. By the end of the year, 73.1 thousand tourists, an increase of 5.7 percent, arrived in this destination. This performance signaled full recovery as the arrival level surpassed that of 2000 which was the last “normal” year. Arrivals increased in all months except for February, November and December.

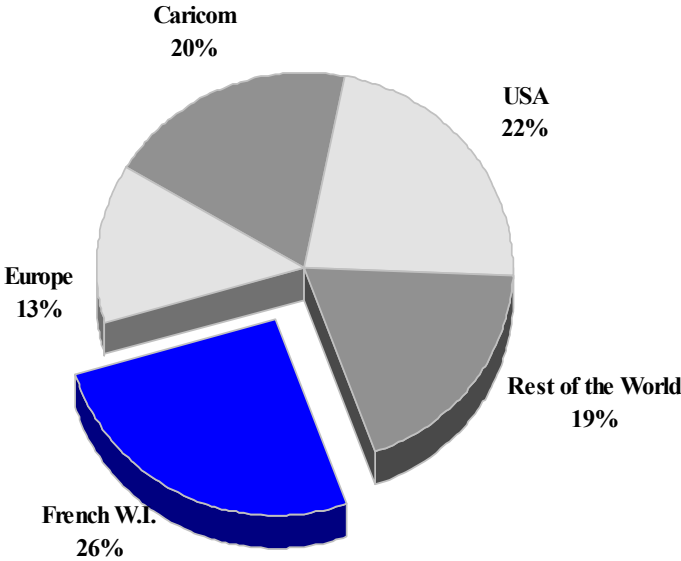
- ◆ The Caribbean islands made up 44.6 percent of arrivals to Dominica in 2003 and increased marginally by 0.2 percent.. However, by regions, the performance varied. While the most significant market, the French West Indies, increased by 4.3 percent, both OECS and the Other Caricom declined by 4.8 percent and 3.4 percent respectively. The second largest provider of tourists, the USA market, rose by 1.7 percent. Europeans, which was lead by strong performances in U.K. (up 6.9 percent) and France (up 8.8 percent), exceeded last year’s level by 14.7 percent. Fewer Canadians visited in 2003.
- ◆ Fueled by a 78.3 percent increase in cruise passenger arrivals in the last quarter of 2003, total passengers reached 177.0 thousand, an increase of 29.4 over 2002. Once again activity diminished between June and September and it even fell below last year’s performance.

TOURISM HIGHLIGHTS FOR 2003

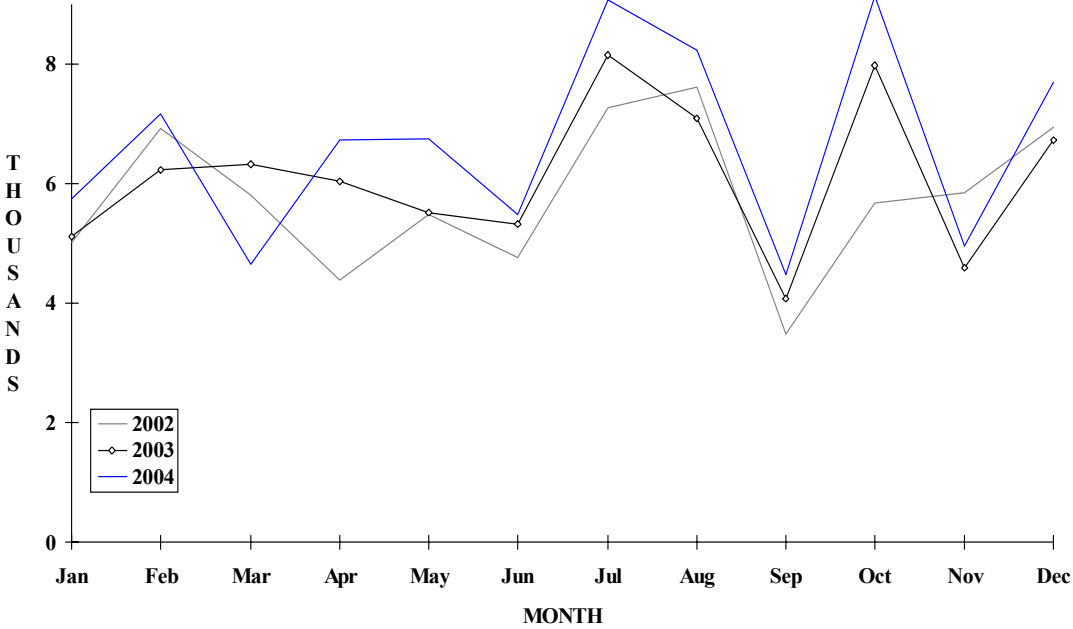
VISITOR ARRIVALS			
Tourist Arrivals ➔	73,140	Cruise Passengers	177,044
➔ <i>Summer</i>	67.5%	➔ <i>Summer</i>	47.8%
➔ <i>Winter</i>	32.5%	➔ <i>Winter</i>	52.2%
		Cruise Ship Calls	206
VISITOR PROFILE			
Average Length of Stay (<i>nights</i>)	9.8	Tourist Arrivals by Place of Stay	
Tourist Arrivals by Purpose of Visit		➔ <i>Hotels</i>	18.7%
➔ <i>Holiday</i>	81.8%	➔ <i>Guest Houses/Apartments</i>	16.0%
➔ <i>Business</i>	11.4%	➔ <i>Private</i>	56.2%
➔ <i>Other</i>	6.8%	➔ <i>Other</i>	9.1%
TOURISM AND OTHER RELATED ECONOMIC STATISTICS			
Total Expenditure (<i>US\$ millions</i>)	\$55.4	GDP at Factor Cost (<i>US\$ millions</i>)	\$214.3
Tourism Budget (<i>US\$ thousands</i>) ^{III f}	\$1,568	Consumer Price Index (% ch. 2003/'02)	1.6%
Hotel and Restaurant contribution to GDP	2.7%		
ACCOMMODATION STATISTICS		SOCIO-ECONOMIC STATISTICS	
Rooms ^I	889	Land Area (<i>square Kilometres</i>)	750
		Population (<i>thousand mid year 2003</i>)	71.2

DOMINICA

**TOURIST ARRIVALS BY MAIN MARKETS
2004**



MONTHLY TOURIST ARRIVALS



TOURIST ARRIVALS BY COUNTRY OF RESIDENCE

Country of Residence	1999	2000	2001	2002	2003	% Share 2003
U.S.A	15613	15078	14493	15464	15726	21.5
Canada	2158	2176	1870	2039	1959	2.7
United Kingdom	6633	6140	5967	5652	6041	8.3
France	3011	2902	2662	2353	2561	3.5
Other Europe	2357	2105	2196	2126	2170	3.0
OECS	7087	8781	9090	11059	10311	14.1
Other CARICOM	6327	4844	5408	4835	4669	6.4
French W.I	20214	18900	16873	16926	17669	24.2
Other Countries	10106	8672	7834	8730	12034	16.5
TOTAL	73506	69598	66393	69184	73140	100.0

MONTHLY TOURISTS ARRIVALS

Month	1999	2000	2001	2002	2003	% Change 2003/02
January	4897	5022	4846	5019	5244	4.5
February	6869	5036	6961	6921	6213	-10.2
March	5818	7462	5118	5799	6310	8.8
April	5824	6436	5693	4387	6046	37.8
May	5511	4636	4785	5486	5518	0.6
June	4806	5177	5271	4766	5271	10.6
July	8164	8627	8292	7277	8109	11.4
August	7223	7289	5746	7610	7091	-6.8
September	3998	3059	3373	3477	4047	16.4
October	9212	6553	6302	5699	7972	39.9
November	4572	3902	4043	5849	4603	-21.3
December	6612	6399	5963	6924	6736	-2.7
TOTAL	73506	69598	66393	69214	73160	5.7

CRUISE PASSENGER ARRIVALS

Month	1999	2000	2001	2002	2003	% Change
						2003/02
January	25241	20050	32521	30099	29152	-3.1
February	20810	28548	28318	22701	23093	1.7
March	29480	32656	30827	22165	24276	9.5
April	20043	23020	27930	14121	15860	12.3
May	2295	12767	2378	1979	3594	81.6
June	12710	10341	7492	143	130	-9.1
July	12894	10383	9040	300	185	-38.3
August	12516	10792	6930	91	72	-20.9
September	11004	8950	6090	-	-	-
October	12921	23977	12697	7317	13956	90.7
November	20390	30584	23965	17547	26310	49.9
December	21699	27728	19439	20396	40416	98.2
TOTAL	202003	239796	207627	136859	177044	29.4

Number of Calls	263	287	231	187	206
------------------------	-----	-----	-----	-----	-----

TOTAL VISITOR ARRIVALS BY CATEGORY

Category	1999	2000	2001	2002	2003
Tourists	73506	69598	66393	69184	73160
Cruise Passengers	202003	239796	207627	136859	177044
Other same-day visitors	3924	2656	1979	1218	2150
TOTAL	279433	312050	275999	207261	252354

TOURIST ACCOMMODATION (Rooms)

Rooms	1999	2000	2001	2002	2003
TOTAL	867	890	899	889	n.a

Sources: Division of Tourism, National Development Corporation, Department of Statistics- Dominica