

## GUADELOUPE

*(including Les Saintes, Desirade, Marie Galante, St Barthelemy and St Martin)*

### Visitor Arrival Summary

Data was unavailable for Guadeloupe in 2004. CTO estimated that tourist arrivals totalled 799.4 thousand in 2003, this was some 33 thousand more than the estimated 765.4 thousand of 2002.

#### TOURISM HIGHLIGHTS FOR 2004

VISITOR ARRIVALS			
*Tourist Arrivals <sup>III</sup> →	623,134	Cruise Passengers	195,102
↳ Summer <sup>1</sup>	40%	↳ Summer	62.6%
↳ Winter <sup>1</sup>	60%	↳ Winter	37.4%
		Cruise calls	284
VISITOR PROFILE			
Average Length of Stay (nights)	3.5	<b>Tourist Arrivals by Place of Stay<sup>VI</sup></b>	
<b>Tourist Arrivals by Purpose of Visit<sup>VI</sup></b>		↳ Hotels	70%
↳ Holiday	88%	↳ Guest House/Apartments	24%
↳ Business	12%	↳ Private	n.a.
↳ Other	n.a.	↳ Other	6%
TOURISM AND OTHER ECONOMIC STATISTICS			
Total Expenditure (US\$ millions) <sup>VI</sup>	\$314.5	Tourism Budget (US\$ thousands) <sup>b</sup>	\$8,137
		Consumer Price Index (% ch. 2003/'02)	1.6%
ACCOMMODATION STATISTICS		SOCIO-ECONOMIC STATISTICS	
Rooms <sup>I</sup>	7,603	Land Area ** (square Kilometres)	1,373
Room Occupancy Rates <sup>I</sup>	44.9%	Population (thousand mid year 2003)	438.8

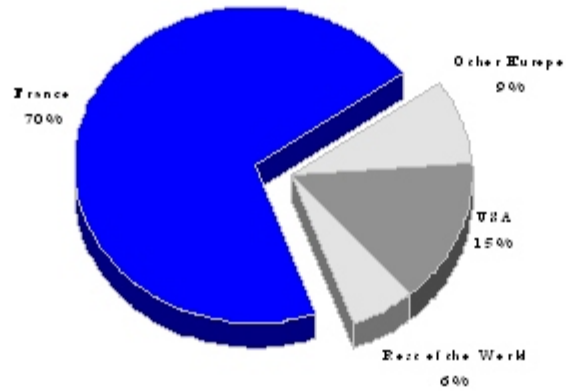
\* Estimated by Office Départemental du Tourisme, Guadeloupe

\*\* Including dependencies

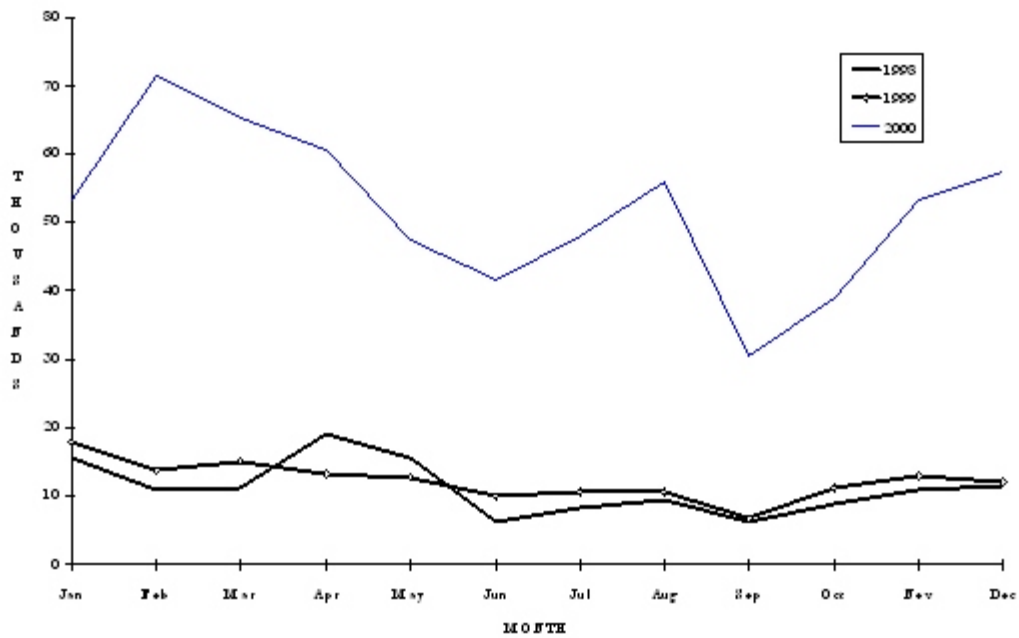
<sup>1</sup> Distribution based on data on hotel registrations

# GUADELOUPE

## TOURIST ARRIVALS BY MAIN MARKETS 2000



### MONTHLY TOURIST ARRIVALS



The sample in 2000 was different from that of 1999

**GUADELOUPE**

**ESTIMATED TOURIST ARRIVALS**

	1999	2000	2001	2002	2003
Guadeloupe	561000	602875	520000	n.a	n.a
Lles Du Nord	n.a	204165	n.a	n.a	n.a
<b>TOTAL</b>	<b>711000</b>	<b>807040</b>	<b>773400</b>	<b><sup>e</sup>765700</b>	<b><sup>e</sup>799400</b>

**TOURIST ARRIVALS AT HOTELS \***

Country of Residence	1999	2000	2001	2002	% Share	
					2003	2003
United States	5073	92474	n.a	n.a	n.a	n.a
Canada	2254	10431	n.a	n.a	n.a	n.a
France	124330	440779	n.a	n.a	n.a	n.a
Other Europe	12700	54606	n.a	n.a	n.a	n.a
Americas/Caribbean	1108	22966	n.a	n.a	n.a	n.a
Rest of World	736	1878	n.a	n.a	n.a	n.a
<b>TOTAL</b>	<b>146201</b>	<b>623134</b>	<b>n.a</b>	<b>n.a</b>	<b>n.a</b>	<b>n.a</b>

**MONTHLY TOURIST ARRIVALS AT HOTELS**

Month	1999	*2000	2001	2002	% Change	
					2003	2003/02
January	17885	53164	n.a	n.a	n.a	n.a
February	13655	71475	n.a	n.a	n.a	n.a
March	15011	65153	n.a	n.a	n.a	n.a
April	13342	60494	n.a	n.a	n.a	n.a
May	12727	47545	n.a	n.a	n.a	n.a
June	9853	41595	n.a	n.a	n.a	n.a
July	10554	48006	n.a	n.a	n.a	n.a
August	10554	55913	n.a	n.a	n.a	n.a
September	6593	30654	n.a	n.a	n.a	n.a
October	11092	38848	n.a	n.a	n.a	n.a
November	12994	53082	n.a	n.a	n.a	n.a
December	11941	57205	n.a	n.a	n.a	n.a
<b>TOTAL</b>	<b>146201</b>	<b>623134</b>	<b>n.a</b>	<b>n.a</b>	<b>n.a</b>	<b>n.a</b>

\* The reader is cautioned when using the monthly percentage change since the number of reporting hotels may vary from year to year. This is particularly true for 2000, where the sample changed.

GUADELOUPE

CRUISE PASSENGER ARRIVALS

Month	1999	2000	2001	2002	% Change	
					2003	2003/02
January	34314	60532	n.a	40053	32643	-18.5
February	38836	60723	n.a	42653	30881	-27.6
March	36612	76010	n.a	51507	33812	-34.4
April	33156	40464	n.a	25981	24790	-4.6
May	18950	9609	n.a	0	0	-
June	19790	10297	n.a	0	4255	-
July	18914	10142	n.a	5394	6164	14.3
August	13118	10175	n.a	0	6193	-
September	4646	9512	n.a	0	4054	-
October	23690	15881	n.a	0	5305	-
November	23528	36916	n.a	11137	10414	-6.5
December	27180	52057	n.a	28103	36591	30.2
<b>TOTAL</b>	<b>292734</b>	<b>392318</b>	<b>361715</b>	<b>204828</b>	<b>195102</b>	<b>-4.7</b>

Number of Calls	203	249	249	240	284
-----------------	-----	-----	-----	-----	-----

TOURIST ACCOMMODATION (Hotel Rooms Only)

Area	1999	2000	2001	2002	2003
Guadeloupe*	4459	4504	n.a	n.a	4159
Les Saintes	80	85	n.a	n.a	83
Saint Barthelemy	571	576	n.a	n.a	567
Saint Martin	2979	2801	n.a	n.a	2623
Marie Galante & Desirade	171	170	n.a	n.a	171
<b>TOTAL</b>	<b>8260</b>	<b>8136</b>	<b>8019</b>	<b>n.a</b>	<b>7603</b>

\* Grand Terre and Basse Terre

Source: Office Departemental du Tourisme de la Guadeloupe