

GUYANA

Visitor Arrival Summary

Guyana registered a robust 20.9 percent rise in tourist arrivals which brought the total number to 122.0 thousand tourist in 20004. In the winter season arrivals rose by 27.7 percent while in the summer season there was an upsurge of 18.1 percent with small decreases in October and November.

- ◆ A total of 64.9 thousand originated in the US market in 2004 which was a 30.9 percent increase. This was the largest number of Americans to visit in a single year as they continue to be the main source (53.2 percent of total arrivals) of tourists. Significantly, more tourists (13.4 percent) came from Caribbean countries which accounted for 23.0 percent of all arrivals in 2004. Canadians and Europeans also increased their levels of visitation to the destinations by 12.4 percent and 11.3 percent respectively. The south American market, one of the smallest market for Guyana) was the only one where no growth was recorded. He re arrivals fell below the level of 2003 by 14.0 percent.

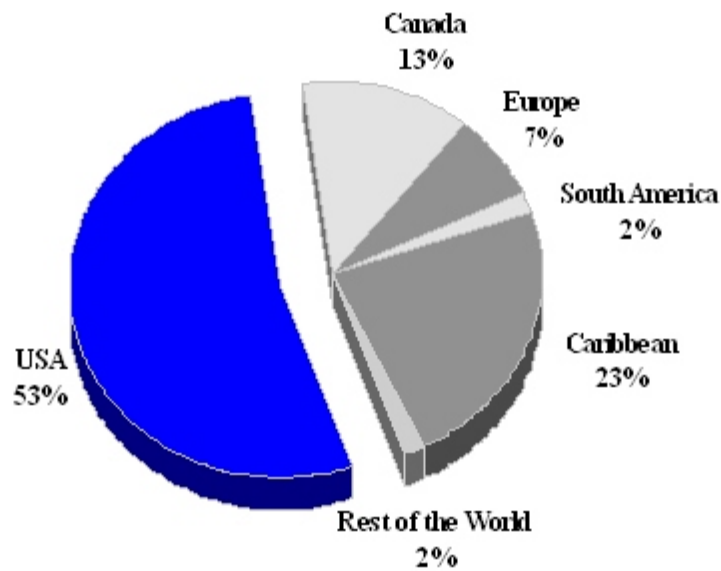
TOURISM HIGHLIGHTS FOR 2004

VISITOR ARRIVALS			
Tourist Arrivals ✈	121,989	Arrivals by Sea	<u>NOT</u>
➤ <i>Summer</i>	69.7%		<u>AVAIL</u>
➤ <i>Winter</i>	30.3%		<u>ABLE</u>
VISITOR PROFILE			
Average Length of Stay (<i>nights</i>) ^{III}	19.2	Tourist Arrivals by Place of Stay	
Tourist Arrivals by Purpose of Visit		➤ <i>Hotels</i>	13.7%
➤ <i>Holiday</i>	64.3%	➤ <i>Guest House/Apartments</i>	0.7%
➤ <i>Business</i>	10.9%	➤ <i>Private</i>	85.2%
➤ <i>Other</i>	24.8%	➤ <i>Other</i>	0.3%
TOURISM AND OTHER RELATED ECONOMIC STATISTICS			
Total Expenditure (<i>US\$ millions</i>) ^e	\$86.6	GDP at Factor Cost (<i>US\$ millions</i>)	\$653.3
Tourism Budget (<i>US\$ thousand</i>) ^{IX}	\$700	Consumer Price Index (<i>% ch. 2004/'03</i>)	5.5%
ACCOMMODATION STATISTICS		SOCIO-ECONOMIC STATISTICS	
Rooms ^{VI}	730	Land Area (<i>square Kilometres</i>)	215,000
		Population (<i>thousand mid year 2003</i>)	746.0

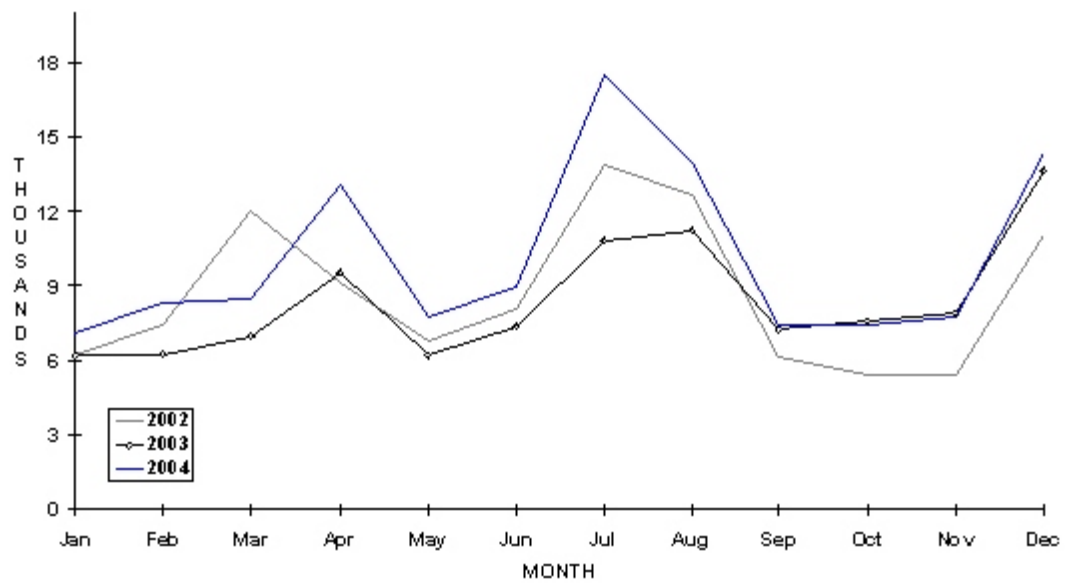
GUYANA

TOURIST ARRIVALS BY MAIN MARKETS

2004



MONTHLY TOURIST ARRIVALS



GUYANA

TOURIST ARRIVALS BY COUNTRY OF ORIGIN

Country of Origin	2000	2001	2002	2003	%Share	
					2004	2004
United States	46177	46546	50058	49625	64948	53.2
Canada	15948	12654	14190	14144	15900	13.0
Europe	7229	8771	8190	8136	9056	7.4
Caribbean	29993	23821	28211	24779	28091	23.0
South America	4007	1565	1983	2186	1879	1.5
Other	1686	1791	1709	2041	2115	1.7
TOTAL	n.a	95148	104341	100911	121989	100.0

** 1998 figures are from January - November only

MONTHLY TOURIST ARRIVALS

Month	2000	2001	2002	2003	% Change	
					2004	2004/03
January	5415	6182	6249	6206	7094	14.3
February	5311	6744	7382	6230	8307	33.3
March	7801	6374	12042	6969	8459	21.4
April	10935	8836	9120	9542	13117	37.5
May	6834	5595	6773	6207	7694	24.0
June	8163	7364	8073	7358	8919	21.2
July	14850	12300	13912	10829	17501	61.6
August	13589	11004	12714	11241	13936	24.0
September	6321	5761	6167	7230	7398	2.3
October	6227	5716	5446	7560	7434	-1.7
November	6762	6167	5388	7877	7768	-1.4
December	12832	13105	11075	13662	14362	5.1
TOTAL	105040	95148	104341	100911	121989	20.9

VISITOR ARRIVALS BY MODE OF ENTRY AND BY SEX

Mode of Entry	1996	1997	1998	1999	2000
Air	80817	67833	n.a	n.a	n.a
Overland	453	405	n.a	n.a	n.a
Sea	10654	7498	n.a	n.a	n.a
Not Stated	-	1	n.a	n.a	n.a
TOTAL	91924	75737	n.a	n.a	n.a

Sex	1996	1997	1998	1999	2000
Male	52114	42857	n.a	n.a	n.a
Female	39633	32879	n.a	n.a	n.a
Not Stated	177	1	n.a	n.a	n.a

TOURIST ACCOMMODATION* (Rooms)

Area	2000	2001	2002	2003	2004
Georgetown	n.a	n.a	n.a	n.a	n.a
Rest of Country	n.a	n.a	n.a	n.a	n.a
Total	n.a	n.a	n.a	n.a	n.a

TOURIST ACCOMMODATION (Rooms)

Type of Accommodation	2000	2001	2002	2003	2004
Hotel/Guest House	n.a	n.a	n.a	n.a	n.a
Resort Lodge	n.a	n.a	n.a	n.a	n.a
TOTAL	n.a	n.a	n.a	n.a	n.a

*Tourist hotels only

Sources: Ministry of Trade and Tourism; Statistical Bureau - Guyana