

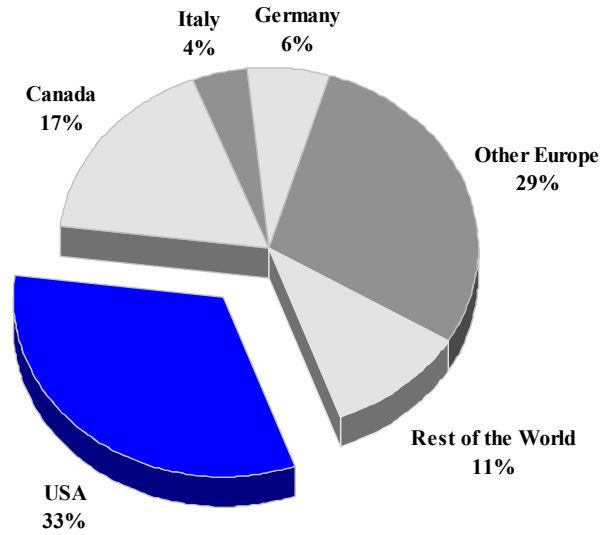
DOMINICAN REPUBLIC

TOURISM HIGHLIGHTS FOR 2007

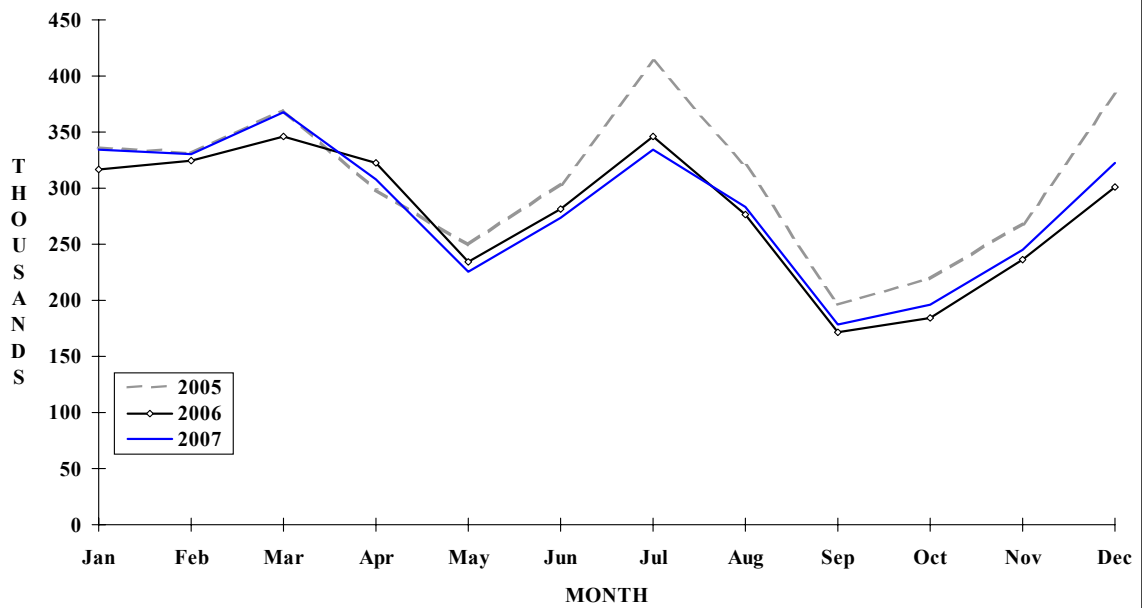
VISITOR ARRIVALS			
Tourist Air Arrivals ✈ ➔ <i>Summer</i> ➔ <i>Winter</i>	3,398,374 60.6% 39.4%	Cruise Passengers Cruise ship calls	384,878 380
VISITOR PROFILE			
Average Length of Stay (nights)	9.3	Tourist Arrivals by Purpose of Visit	
Tourist Arrivals by Place of Stay ➔ <i>Hotels</i> ➔ <i>Other</i>	89.3% 10.7%	➔ <i>Holiday</i> ➔ <i>Business</i> ➔ <i>Other</i>	94.9% 3.3% 1.8%
TOURISM AND OTHER RELATED ECONOMIC STATISTICS			
Visitor Expenditure (US\$ millions) ^I	\$3,792.2	GDP at Factor Cost (US\$ millions) ^{II}	\$18,653.2
Consumer Price Index (% ch. 2004/'03)	51.5%	Hotel and Restaurant contribution to GDP ^{IV}	8.0%
ACCOMMODATION STATISTICS		SOCIO-ECONOMIC STATISTICS	
Rooms	64,898	Land Area (square Kilometres)	48,442
Room Occupancy Rates	72.2%	Population (thousand mid year 2004)	9,084.0

DOMINICAN REPUBLIC

**TOURIST ARRIVALS BY MAIN MARKETS
2007**



MONTHLY TOURIST ARRIVALS



DOMINICAN REPUBLIC

TOURIST AIR ARRIVALS BY NATIONALITY

Nationality	2003	2004	2005	2006	2007
Non-Nationals	2747899	2872680	3088247	3342106	3398374
Dominicans*	520283	577500	602445	622949	581208
TOTAL	3268182	3450180	3690692	3965055	3979582

*Dominican nationals resident overseas.

VISITOR ARRIVALS* BY MODE OF ARRIVAL

Mode of Arrival	2003	2004	2005	2006	2007
Air	3268182	3450180	360692	3965055	3979582
Sea*	n.a	n.a	n.a	n.a	n.a
TOTAL	3268182	3450180	360692	3965055	3979582

*Includes Cruise passenger arrivals

FOREIGN VISITOR AIR ARRIVALS BY NATIONALITY

Country of Residence	2003	2004	2005	2006	2007	%Share 2007
U.S.A	865942	933017	1010012	1092213	1099906	32.4
Canada	412625	448926	427074	512909	591871	17.4
Italy	135293	124004	133954	138590	140423	4.1
Germany	243135	233146	234800	223707	214942	6.3
United Kingdom	171696	198014	217945	239978	221861	6.5
Other Europe	715854	732620	808710	785134	763681	22.5
Other	248664	780453	858197	349575	365690	10.8
TOTAL	2793209	3450180	3690692	3342106	3398374	100.0

FOREIGN VISITOR AIR ARRIVALS

Month	2003	2004	2005	2006	2007	% Change 2007/06
January	286589	310003	336746	316652	334544	5.7
February	293289	329014	331651	324683	329979	1.6
March	299597	321984	369991	346264	367399	6.1
April	270960	293048	298746	322452	307914	-4.5
May	211592	221596	249561	234333	225320	-3.8
June	256771	276484	303950	281741	273120	-3.1
July	351923	381284	412849	345913	334473	-3.3
August	312545	316866	319705	276731	283183	2.3
September	191877	183234	195593	171641	178446	4.0
October	201939	197614	219649	183859	196283	6.8
November	247155	257068	268759	236640	245013	3.5
December	343945	361985	383492	301197	322700	7.1
TOTAL	3268182	3450180	3690692	3342106	3398374	1.7

* Including Dominican nationals resident overseas.

MONTHLY CRUISE ARRIVALS

Month	2003	2004	2005	2006	2007	% Change 2007/06
January	48374	75635	47227	47014	50656	-100.0
February	46955	74547	54706	54168	57243	5.7
March	57717	77393	55186	56989	54072	-5.1
April	53638	57380	32456	29186	42620	46.0
May	12039	12697	6370	10650	13307	24.9
June	14459	13543	7634	7183	15715	118.8
July	23303	18743	11762	14961	14377	-3.9
August	12322	13057	5365	8226	7115	-13.5
September	7503	5127	4502	3613	4075	12.8
October	19523	13415	2255	4241	15469	264.7
November	36187	34856	17113	20065	n.a	n.a
December	65973	59928	45229	47193	n.a	n.a
TOTAL	283414	182220	289805	303489	384878	26.8

TOURIST ACCOMMODATION (Rooms)

Rooms	2003	2004	2005	2006	2007
Hotels	n.a	n.a	56555	n.a	n.a
Apartments	n.a	n.a	376	n.a	n.a
Villas/Cottages	n.a	n.a	610	n.a	n.a
Other	n.a	n.a	2329	n.a	n.a
TOTAL	56378	59082	59870	63206	64898

* Preliminary

**Source: Banco Central de la Republica Dominicana

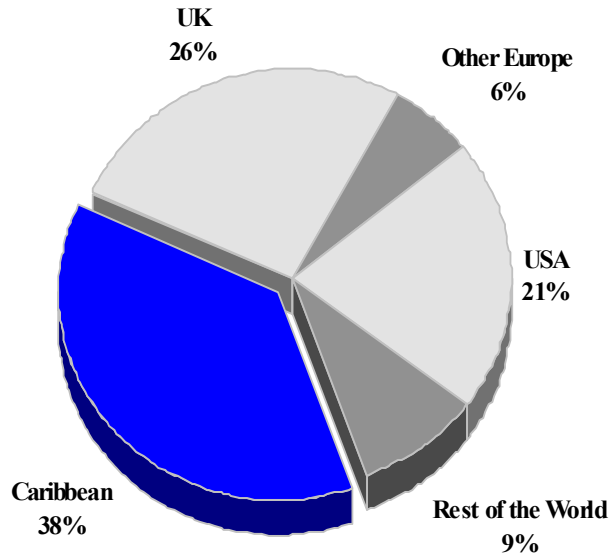
GRENADA

TOURISM HIGHLIGHTS FOR 2007

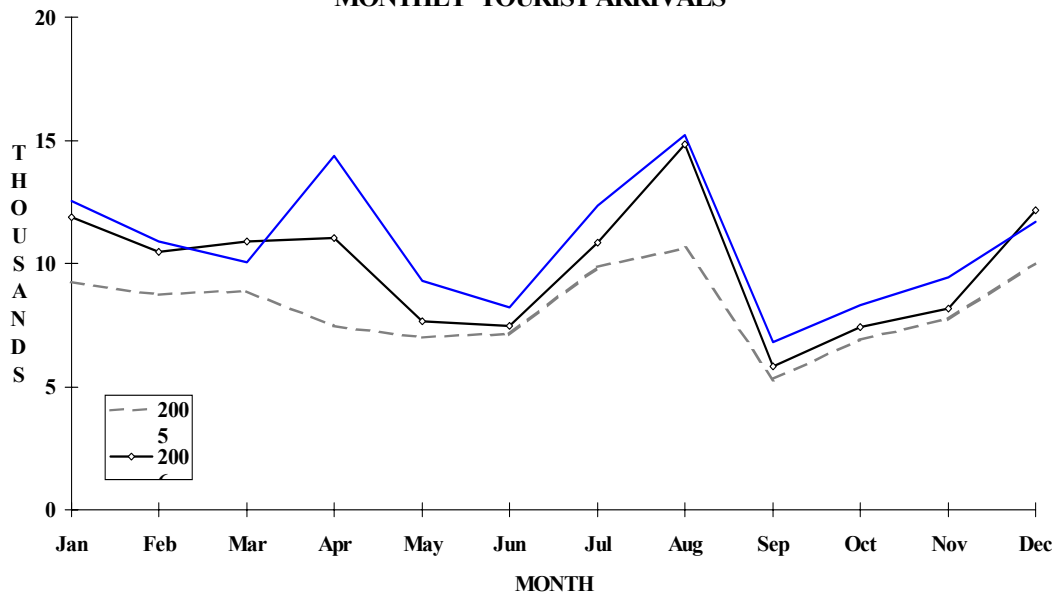
VISITOR ARRIVALS			
Tourist Arrivals ➔ ➔ <i>Summer</i> ➔ <i>Winter</i>	129,147 63.0% 37.0%	Cruise Passengers ➔ <i>Summer</i> ➔ <i>Winter</i> Cruise Ship calls Yachts calls ¹¹	270,323 41.9% 58.1% 221 2,989
VISITOR PROFILE			
Average Length of Stay (nights) ¹ Tourist Arrivals by Purpose of Visit ¹ ➔ Holiday ➔ Business ➔ Other	7.6 n.a n.a n.a	Tourist Arrivals by Place of Stay ¹¹ ➔ <i>Hotels</i> ➔ <i>Guest Houses/Apartments</i> ➔ <i>Private</i> ➔ <i>Other</i>	23.4% 11.8% 54.7% 10.1%
TOURISM AND OTHER RELATED ECONOMIC STATISTICS			
Total Expenditure (US\$ millions) ¹ Tourism Budget (US\$ thousands) ^{11b}	\$114.4 \$4,182	Hotel and Restaurant contribution to GDP ^{11c} GDP at Factor Cost (US\$ millions) ¹ Consumer Price Index (% ch. 2006/'05)	8.6% \$355.6 4.1%
ACCOMMODATION STATISTICS		SOCIO-ECONOMIC STATISTICS	
Rooms ¹ Room Occupancy Rates ¹	1,595 71.0%	Land Area (square Kilometres) Population (thousand mid year 2006)	344 106.6

GRENADA

TOURIST ARRIVALS BY MAIN MARKETS 2007



MONTHLY TOURIST ARRIVALS



GRENADA

TOURIST ARRIVALS BY COUNTRY OF RESIDENCE

Country of Residence	2003	2004	2005	2006	2007	% Share 2007
United States	35154	30127	25181	27332	27219	21.1
Canada	5599	5309	4341	6387	6038	4.7
United Kingdom	33323	28232	15605	25187	33893	26.2
Other Europe	9857	7945	6779	7510	7912	6.1
Trinidad & Tobago	19958	20228	13055	15602	14552	11.3
Other CARICOM	16205	17638	13731	15525	14406	11.2
Grenadians abroad	16715	19076	15907	17775	19165	14.8
Rest of the World	5543	5310	3949	3336	5962	4.6
TOTAL	142354	133865	98548	118654	129147	100.0

MONTHLY TOURIST ARRIVALS

Month	2003	2004	2005	2006	2007	% Change 2007/06
January	12378	12486	9260	11888	12514	5.3
February	11601	13012	8173	10490	10890	3.8
March	11895	12546	8852	10903	10027	-8.0
April	12822	15090	7481	11013	14386	30.6
May	8240	10821	7013	7656	9283	21.3
June	10089	9380	7115	7468	8236	10.3
July	15246	16580	9839	10868	12351	13.6
August	17381	16629	10614	14816	15214	2.7
September	7862	6724	5299	5835	6822	16.9
October	10264	6634	6886	7415	8304	12.0
November	10778	6220	7780	8154	9442	15.8
December	13799	7743	10237	12148	11678	-3.9
TOTAL	142355	133865	98549	118654	129147	8.8

CRUISE PASSENGER ARRIVALS

Month						% Change	
	2003	2004	2005	2006	2007	2007/06	
January	24384	46681	50681	46238	43876	-5.1	
February	22159	36101	45146	35342	39679	12.3	
March	21949	38877	52214	32911	36024	9.5	
April	18403	22915	36677	24764	37413	51.1	
May	3499	7408	300	849	6060	613.8	
June	515	5605	297	119	2936	2367.2	
July	487	5934	190	64	4352	6700.0	
August	360	5849	37	0	3729	??	
September	137	2856	84	0	2847	??	
October	3170	401	5095	7372	7040	-4.5	
November	16596	19719	30779	23769	32496	36.7	
December	35266	37454	53580	47256	53871	14.0	
TOTAL	146925	229800	275080	218684	270323	23.6	

Number of Calls

Cruise Ships	267	249	260	221	221
Yachts	4157	3177	2989	n.a	n.a

TOURIST ACCOMMODATION (Rooms)

Type of Accommodation	2003	2004	2005	2006	2007
Hotels	1167	466	878	n.a	n.a
Guest Houses	225	172	241	n.a	n.a
Apartments/Cottages	366	222	351	n.a	n.a
TOTAL	1758	860	1470	1595	n.a

Source: Grenada Department of Tourism

GUADELOUPE

(including Les Saintes, Desirade, Marie Galante, St Barthelemy and St Martin)

Visitor Arrival Summary

TOURISM HIGHLIGHTS FOR 2006

VISITOR ARRIVALS			
*Tourist Arrivals ^{III} ➔ ➔ Summer ¹ ➔ Winter ¹	623,134 40% 60%	Cruise Passengers ➔ Summer ➔ Winter Cruise calls	195,102 62.6% 37.4% 284
VISITOR PROFILE			
Average Length of Stay (nights) Tourist Arrivals by Purpose of Visit ^{VI} ➔ Holiday ➔ Business ➔ Other	3.5 88% 12% n.a.	Tourist Arrivals by Place of Stay ^{VI} ➔ Hotels ➔ Guest House/Apartments ➔ Private ➔ Other	70% 24% n.a. 6%
TOURISM AND OTHER ECONOMIC STATISTICS			
Total Expenditure (US\$ millions) ^{VI}	\$314.5	Tourism Budget (US\$ thousands) ^b Consumer Price Index (% ch. 2003/'02)	\$8,137 1.6%
ACCOMMODATION STATISTICS		SOCIO-ECONOMIC STATISTICS	
Rooms ^{III} Room Occupancy Rates ^I	7,603 44.9%	Land Area ** (square Kilometres) Population (thousand mid year 2003)	1,373 438.8

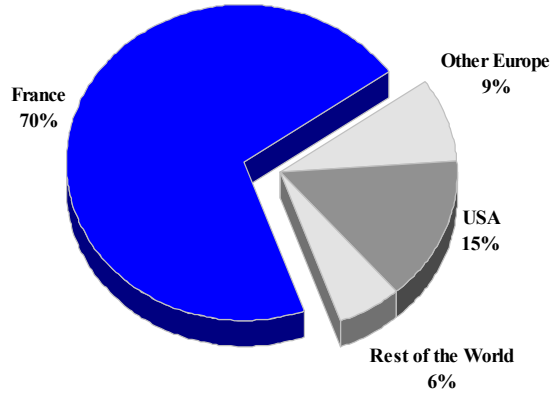
* Estimated by Office Départemental du Tourisme, Guadeloupe

** Including dependencies

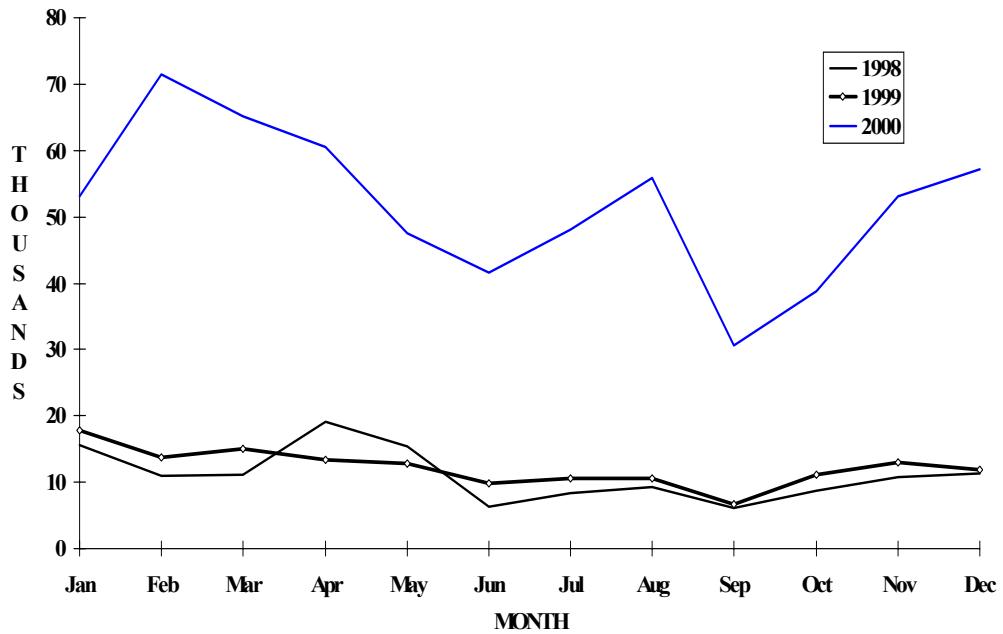
¹ Distribution based on data on hotel registrations

GUADELOUPE

TOURIST ARRIVALS BY MAIN MARKETS 2000



MONTHLY TOURIST ARRIVALS



•The sample in 2000 was different from that of 1999

GUADELOUPE

ESTIMATED TOURIST ARRIVALS

	1999	2000	2001	2002	2003
Guadeloupe	561000	602875	520000	n.a	n.a
Lles Du Nord	n.a	204165	n.a	n.a	n.a
TOTAL	711000	807040	773400	° 765700	° 799400

TOURIST ARRIVALS AT HOTELS *

Country of Residence	1999	2000	2001	2002	% Share	
					2003	2003
United States	5073	92474	n.a	n.a	n.a	n.a
Canada	2254	10431	n.a	n.a	n.a	n.a
France	124330	440779	n.a	n.a	n.a	n.a
Other Europe	12700	54606	n.a	n.a	n.a	n.a
Americas/Caribbean	1108	22966	n.a	n.a	n.a	n.a
Rest of World	736	1878	n.a	n.a	n.a	n.a
TOTAL	146201	623134	n.a	n.a	n.a	n.a

MONTHLY TOURIST ARRIVALS AT HOTELS

Month	1999	*2000	2001	2002	% Change	
					2003	2003/02
January	17885	53164	n.a	n.a	n.a	n.a
February	13655	71475	n.a	n.a	n.a	n.a
March	15011	65153	n.a	n.a	n.a	n.a
April	13342	60494	n.a	n.a	n.a	n.a
May	12727	47545	n.a	n.a	n.a	n.a
June	9853	41595	n.a	n.a	n.a	n.a
July	10554	48006	n.a	n.a	n.a	n.a
August	10554	55913	n.a	n.a	n.a	n.a
September	6593	30654	n.a	n.a	n.a	n.a
October	11092	38848	n.a	n.a	n.a	n.a
November	12994	53082	n.a	n.a	n.a	n.a
December	11941	57205	n.a	n.a	n.a	n.a
TOTAL	146201	623134	n.a	n.a	n.a	n.a

* The reader is cautioned when using the monthly percentage change since the number of reporting hotels may vary from year to year. This is particularly true for 2000, where the sample changed.

GUADELOUPE

CRUISE PASSENGER ARRIVALS

Month	1999	2000	2001	2002	% Change	
					2003	2003/02
January	34314	60532	n.a	40053	32643	-18.5
February	38836	60723	n.a	42653	30881	-27.6
March	36612	76010	n.a	51507	33812	-34.4
April	33156	40464	n.a	25981	24790	-4.6
May	18950	9609	n.a	0	0	-
June	19790	10297	n.a	0	4255	-
July	18914	10142	n.a	5394	6164	14.3
August	13118	10175	n.a	0	6193	-
September	4646	9512	n.a	0	4054	-
October	23690	15881	n.a	0	5305	-
November	23528	36916	n.a	11137	10414	-6.5
December	27180	52057	n.a	28103	36591	30.2
TOTAL	292734	392318	361715	204828	195102	-4.7
Number of Calls	203	249	249	240	284	

TOURIST ACCOMMODATION (Hotel Rooms Only)

Area	1999	2000	2001	2002	2003
Guadeloupe*	4459	4504	n.a	n.a	4159
Les Saintes	80	85	n.a	n.a	83
Saint Barthelemy	571	576	n.a	n.a	567
Saint Martin	2979	2801	n.a	n.a	2623
Marie Galante & Desirade	171	170	n.a	n.a	171
TOTAL	8260	8136	8019	n.a	7603

* Grand Terre and Basse Terre

Source: Office Departemental du Tourisme de la Guadeloupe

GUYANA

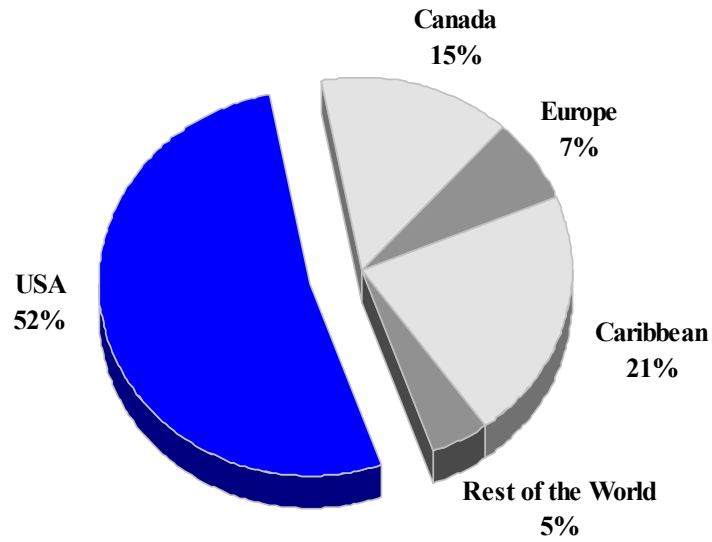
TOURISM HIGHLIGHTS FOR 2007

VISITOR ARRIVALS			
Tourist Arrivals ➔ ➔ <i>Summer</i> ➔ <i>Winter</i>	131,487 68.1% 31.9%	Arrivals by Sea	<u>NOT</u> <u>AVAIL</u> <u>ABLE</u>
VISITOR PROFILE			
Average Length of Stay (<i>nights</i>) ^V	19.2	Tourist Arrivals by Place of Stay ^{III}	
Tourist Arrivals by Purpose of Visit ^{III} ➔ <i>Holiday</i> ➔ <i>Business</i> ➔ <i>Other</i>	64.3% 10.9% 24.8%	➔ <i>Hotels</i> ➔ <i>Guest House/Apartments</i> ➔ <i>Private</i> ➔ <i>Other</i>	13.7% 0.7% 85.2% 0.3%
TOURISM AND OTHER RELATED ECONOMIC STATISTICS			
Total Expenditure (<i>US\$ millions</i>) ^{III e}	\$86.6	GDP at Factor Cost (<i>US\$ millions</i>) ^{III}	\$653.3
Tourism Budget (<i>US\$ thousand</i>) ^{IX}	\$700	Consumer Price Index (<i>% ch. 2004/'03</i>)	5.5%
ACCOMMODATION STATISTICS		SOCIO-ECONOMIC STATISTICS	
Rooms ^{VIII}	730	Land Area (<i>square Kilometres</i>)	215,000
		Population (<i>thousand mid year 2006</i>)	760.2

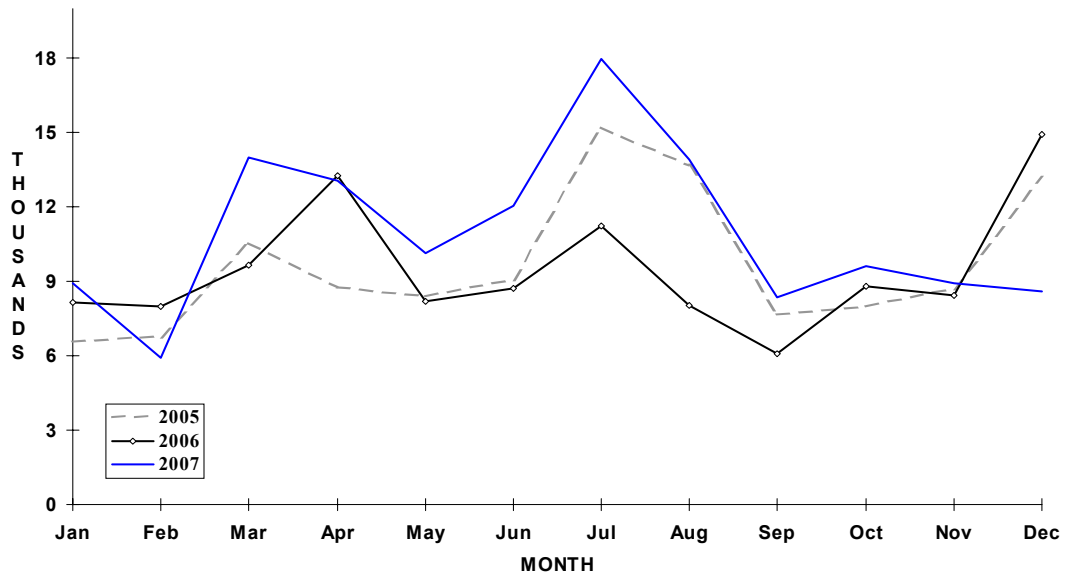
GUYANA

TOURIST ARRIVALS BY MAIN MARKETS

2007



MONTHLY TOURIST ARRIVALS



TOURIST ARRIVALS BY COUNTRY OF ORIGIN

Country of Origin	2003	2004	2005	2006	%Share	
					2007	2007
United States	49625	64948	60071	57193	68861	52.4
Canada	14144	15900	15876	14580	19508	14.8
Europe	8136	9056	8704	8390	9686	7.4
Caribbean	24779	28091	26810	28437	27443	20.9
South America	2186	1879	2376	2087}	-	-
Other	2041	2115	2759	2787}	5989*	4.6
TOTAL	100911	121989	116596	110687	131487	100.0

* includes Arrivals from South America

MONTHLY TOURIST ARRIVALS

Month	2003	2004	2005	2006	% Change	
					2007	2007/06
January	6206	7094	6553	8156	8933	9.5
February	6230	8307	6755	7977	5926	-25.7
March	6969	8459	10560	9664	13977	44.6
April	9542	13117	8779	13250	13081	-1.3
May	6207	7694	8381	8212	10123	23.3
June	7358	8919	9087	8716	12067	38.4
July	10829	17501	15221	11218	17959	60.1
August	11241	13936	13666	8033	13902	73.1
September	7230	7398	7675	6069	8366	37.8
October	7560	7434	8006	8789	9627	9.5
November	7877	7768	8737	8443	8916	5.6
December	13662	14362	13176	14947	8610	-42.4
TOTAL	100911	121989	116596	113474	131487	15.9

VISITOR ARRIVALS BY MODE OF ENTRY AND BY SEX

Mode of Entry	1996	1997	1998	1999	2000
Air	80817	67833	n.a	n.a	n.a
Overland	453	405	n.a	n.a	n.a
Sea	10654	7498	n.a	n.a	n.a
Not Stated	-	1	n.a	n.a	n.a
TOTAL	91924	75737	n.a	n.a	n.a

Sex	1996	1997	1998	1999	2000
Male	52114	42857	n.a	n.a	n.a
Female	39633	32879	n.a	n.a	n.a
Not Stated	177	1	n.a	n.a	n.a

TOURIST ACCOMMODATION* (Rooms)

Area	2002	2003	2004	2005	2006
Georgetown	n.a	n.a	n.a	n.a	n.a
Rest of Country	n.a	n.a	n.a	n.a	n.a
Total	n.a	n.a	n.a	n.a	n.a

TOURIST ACCOMMODATION (Rooms)

Type of Accommodation	2002	2003	2004	2005	2006
Hotel/Guest House	n.a	n.a	n.a	n.a	n.a
Resort Lodge	n.a	n.a	n.a	n.a	n.a
TOTAL	n.a	n.a	n.a	n.a	n.a

*Tourist hotels only

Sources: Guyana Tourism Authority; Statistical Bureau - Guyana

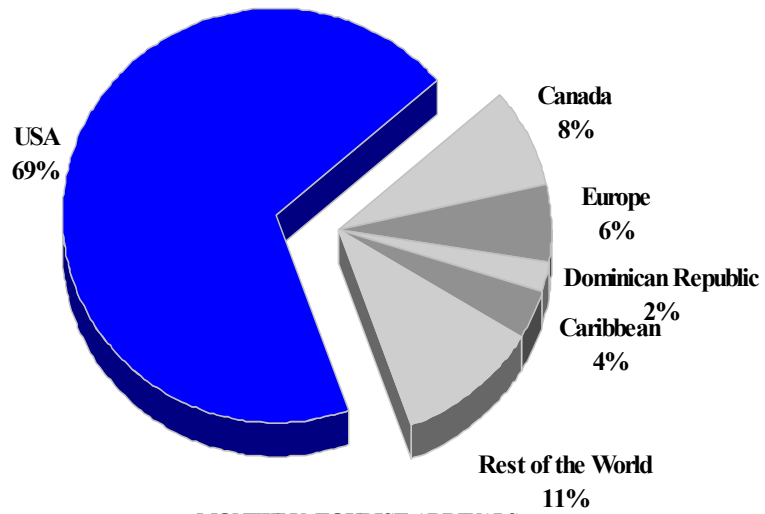
HAITI

TOURISM HIGHLIGHTS FOR 2007

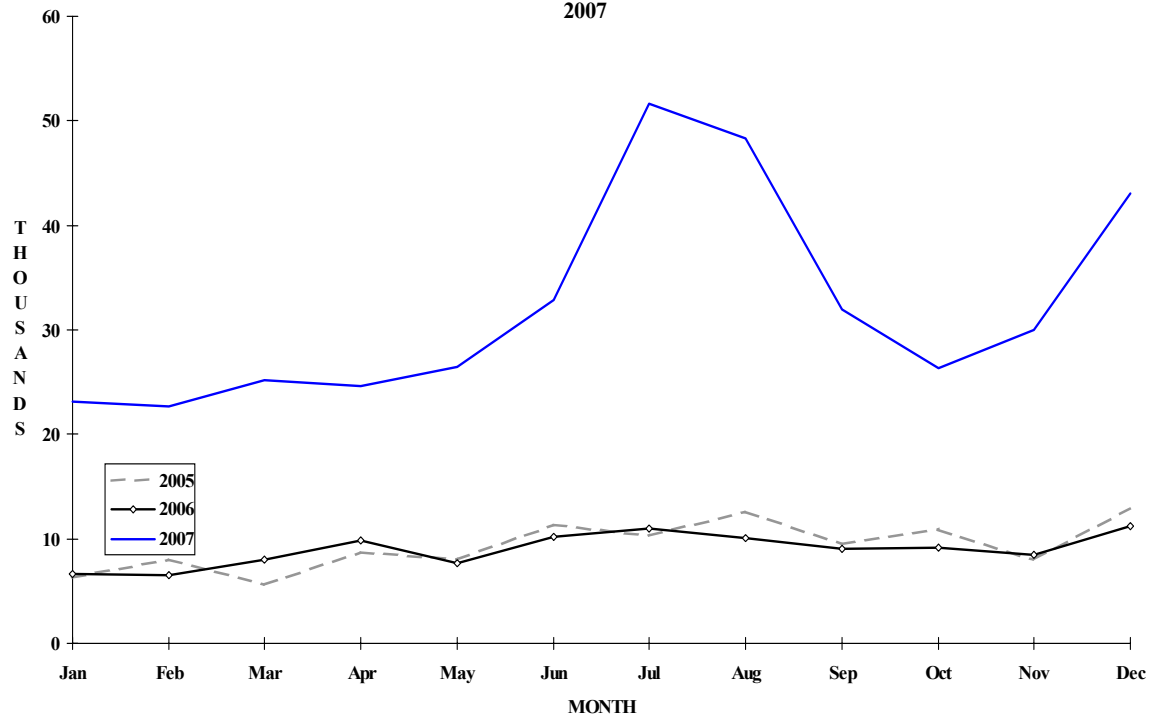
VISITOR ARRIVALS			
Tourist Arrivals ➔	386,060	Cruise Passengers	482,077
➔ <i>Summer</i>	75.2%	➔ <i>Summer</i>	78.9%
➔ <i>Winter</i>	24.8%	➔ <i>Winter</i>	46.0%
VISITOR PROFILE			
Tourist Arrivals by Purpose of Visit ^{VIII}		Tourist Arrivals by Place of Stay ^{IX}	
➔ <i>Holiday</i>	31.0%	➔ <i>Hotels</i>	37.1%
➔ <i>Business</i>	18.0%	➔ <i>Private/Unregistered</i>	62.9%
➔ <i>Other</i>	51.0%		
TOURISM AND OTHER RELATED SOCIO-ECONOMIC STATISTICS			
Total Expenditure (<i>US\$ millions</i>) ^{VI}	\$54	GDP at Factor Cost (<i>US\$ millions</i>) ^{VI}	\$482.9
Consumer Price Index (% <i>ch.</i> 2002/'01)	9.9%	Hotel and Restaurant contribution to GDP ^{IV}	25.3%
ACCOMMODATION STATISTICS		SOCIO-ECONOMIC STATISTICS	
Rooms ^{XII}	1,758	Land Area (square Kilometres)	27,750
		Population (thousand mid year 2001)	8,131.5

HAITI

**TOURIST ARRIVALS BY MAIN MARKETS
2007**



**MONTHLY TOURIST ARRIVALS
2007**



TOURIST ARRIVALS BY COUNTRY OF RESIDENCE

Country of Residence	2003	2004	2005	2006	2007	% Share 2007
United States	94515	72895	77047	79247	266793	69.1
Canada	11354	8014	9986	8733	30046	7.8
France	3754	1831	3349	2787	10246	2.7
Other Europe	3905	2415	3371	3995	13126	3.4
Dom. Republic	6586	3648	5543	2785	8819	2.3
Other Caribbean	8093	3866	7796	4909	15426	4.0
Latin America	4315	1955	2856	3224	10902	2.8
Rest of World	3509	1815	2319	2103	30702	8.0
TOTAL	136031	96439	112267	107783	386060	100.0

MONTHLY TOURIST ARRIVALS

Month	2003	2004	2005	2006	2007	% change 2007/06
January	10437	10545	6281	6631	23155	249.2
February	9875	6289	8028	6540	22654	246.4
March	10547	3263	5567	7992	25161	214.8
April	10784	4695	8753	9803	24639	151.3
May	9867	7894	8037	7659	26442	245.2
June	11289	9459	11322	10172	32821	222.7
July	15058	11257	10345	11003	51619	369.1
August	12389	9958	12576	10069	48318	379.9
September	10058	7891	9501	9045	31925	253.0
October	9575	7245	10843	9125	26348	188.7
November	8237	6854	8049	8431	29951	255.2
December	17915	11089	12965	11213	43027	283.7
TOTAL *	136031	96439	112267	107683	386060	258.5

MONTHLY CRUISE PASSENGER ARRIVALS

Month	2003	2004	2005	2006	% change	
					2007	2007/06
January	23326	41230	30546	38119	51400	34.8
February	30245	18895	39016	30135	41313	37.1
March	36078	0	37247	36575	47538	30.0
April	32099	0	35469	37103	37252	0.4
May	34872	10454	29030	20461	35298	72.5
June	38171	28302	21482	40142	38065	-5.2
July	37405	28757	25323	38416	42807	11.4
August	35307	28694	28700	37968	37580	-1.0
September	39357	28091	22398	39954	30834	-22.8
October	37305	31250	33721	40354	34829	-13.7
November	34398	36332	25126	41477	43054	3.8
December	45130	30187	39963	49217	42107	-14.4
TOTAL	423693	282192	368021	449921	482077	7.1

TOURIST ARRIVALS BY PLACE OF STAY

PLACE OF STAY	1998	1999	2000	2001	2002
Hotels	n.a	n.a	n.a	n.a	n.a
Private Accommodation	n.a	n.a	n.a	n.a	n.a
Total	146837	143362	140492	141634	n.a

Source: *Secrétairerie D'état Au Tourisme, Haiti*