

ST. EUSTATIUS

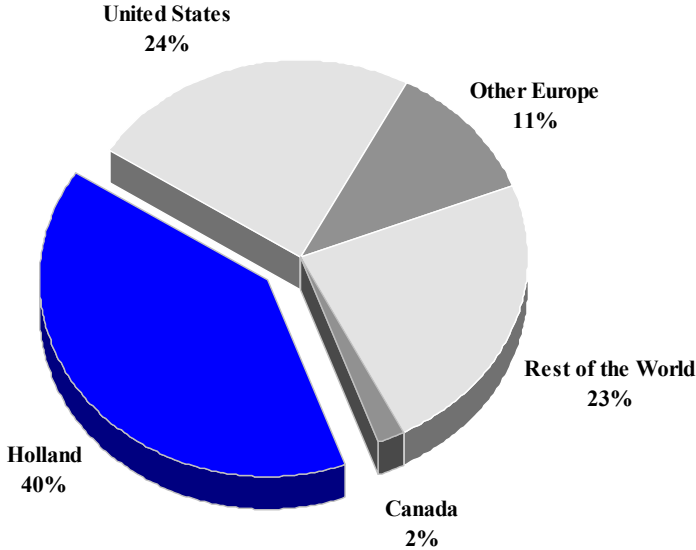
TOURISM HIGHLIGHTS FOR 2007

VISITOR ARRIVALS			
Tourist Arrivals ➔ ➔ <i>Summer</i> * ➔ <i>Winter</i> *	11,568 67.9% 32.1%	Sea Arrivals ➔ <i>Summer</i> ➔ <i>Winter</i> Yacht Arrivals	5,858 48.5% 51.5% 707
ACCOMMODATION STATISTICS		SOCIO-ECONOMIC STATISTICS	
Rooms ^{viii}	62	Land Area (<i>square Kilometres</i>) Population (<i>thousand mid year 2006</i>)	21 2.6

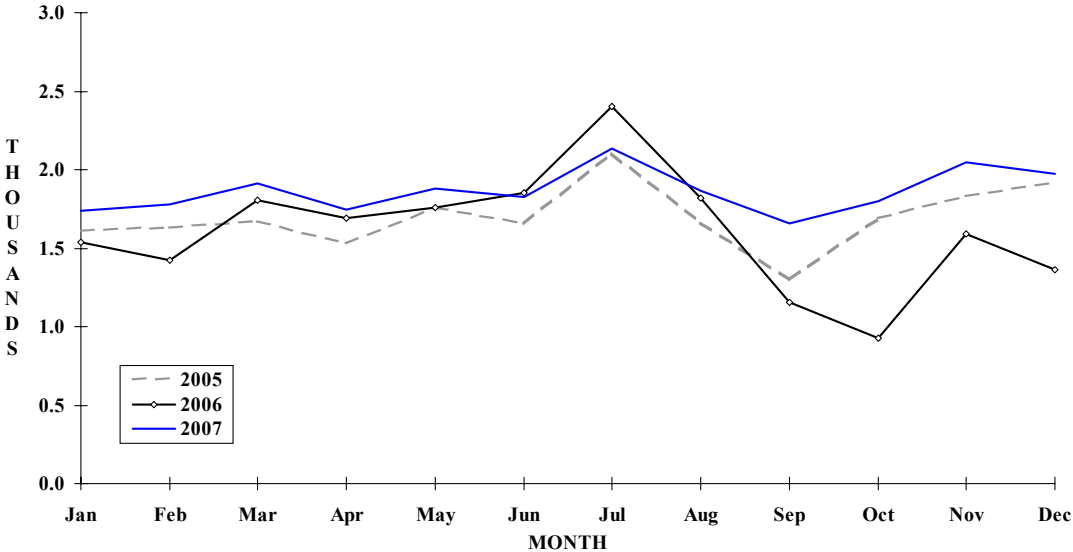
* Based on Total Air Arrivals

ST EUSTATIUS

**TOURIST ARRIVALS BY MAIN MARKETS
2007**



MONTHLY VISITOR ARRIVALS



* Total Visitor Arrivals includes Antilleans

ST EUSTATIUS

VISITOR AIR ARRIVALS BY NATIONALITY*

Nationality	2003	2004	2005	2006	% Share	
					2007	2007
United States	2378	2463	2309	2206	2738	23.7
Canada	184	211	194	138	229	2.0
Holland	3930	4009	3904	3630	4594	39.7
Other Europe	1337	1516	1496	1222	1299	11.2
Rest of the World	2617	2877	2452	2389	2708	23.4
TOTAL TOURISTS	10446	11076	10355	9585	11568	100.0
Antillean **	9795	10121	10001	9735	10784	
TOTAL AIR VISITORS	20241	21197	20356	19320	22352	

*Includes same-day visitors and returning residents

**Includes residents of St Eustatius

MONTHLY VISITOR AIR ARRIVALS

Month	2003	2004	2005	2006	% Change	
					2007	2007/06
January	1565	1659	1609	1536	1736	13.0
February	1440	1560	1628	1422	1776	24.9
March	1513	1645	1672	1803	1912	6.0
April	1502	1740	1527	1693	1743	3.0
May	1746	1729	1756	1756	1879	7.0
June	1887	1770	1655	1855	1827	-1.5
July	2263	2410	2106	2401	2133	-11.2
August	1563	1917	1667	1817	1864	2.6
September	1417	1374	1302	1154	1659	43.8
October	1709	1728	1688	927	1800	94.2
November	1656	1738	1829	1592	2049	28.7
December	1985	1927	1917	1364	1974	44.7
TOTAL	20246	21197	20356	19320	22352	15.7

ST EUSTATIUS

MONTHLY VISITOR SEA ARRIVALS

Month	2003	2004	2005	2006	2007	% Change 2007/06
January	680	553	56	1827	911	-50.1
February	1269	726	1058	1652	898	-45.6
March	948	894	1414	1817	578	-68.2
April	345	744	756	1962	631	-67.8
May	239	491	771	1899	474	-75.0
June	342	268	526	1326	598	-54.9
July	79	354	652	1685	505	-70.0
August	200	334	867	1013	253	-75.0
September	221	115	790	1157	161	-86.1
October	247	134	863	891	115	-87.1
November	272	409	987	1145	344	-70.0
December	506	1095	1142	1879	390	-79.2
TOTAL	5348	6117	9882	18253	5858	-67.9
Yacht Arrivals	610	708	778	708	708	

TOURIST ACCOMMODATION (Rooms)

Rooms	2003	2004	2005	2006	2007
Total	n.a	n.a	n.a	n.a	n.a

Source: St. Eustatius Development Foundation

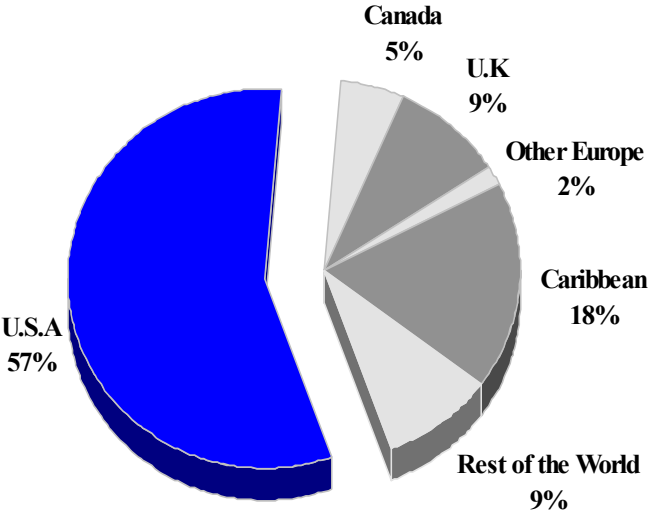
ST KITTS AND NEVIS

TOURISM HIGHLIGHTS FOR 2007

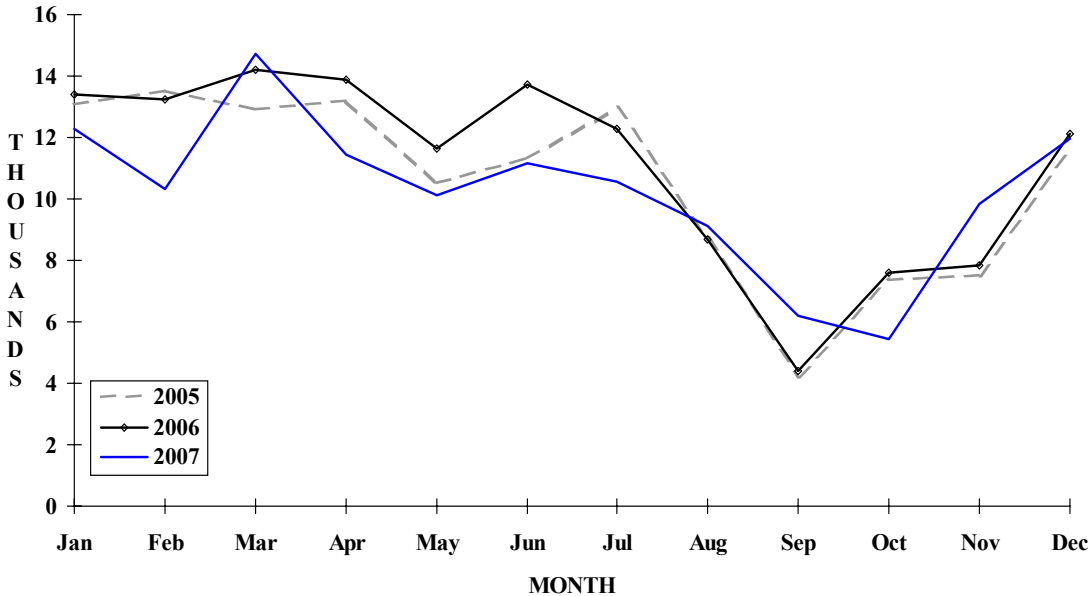
VISITOR ARRIVALS			
Tourist Arrivals ➔	123,161	Cruise Passengers	247,393
➔ <i>Summer</i>	n.a	➔ <i>Summer</i>	60.4%
➔ <i>Winter</i>	n.a	➔ <i>Winter</i>	39.6%
		Cruise Ship Calls ^{II}	281
VISITOR PROFILE			
Average Length of Stay (<i>nights</i>) ^{IV}	9.6	Tourist Arrivals by Place of Stay ^{IV}	
Tourist Arrivals by Purpose of Visit ^{IV}		➔ <i>Hotels</i>	49.9%
➔ <i>Holiday</i>	89.8%	➔ <i>Apartment/Villas</i>	4.3%
➔ <i>Business</i>	9.6%	➔ <i>Private</i>	40.9%
➔ <i>Other</i>	0.6%	➔ <i>Other</i>	4.9%
TOURISM AND OTHER RELATED ECONOMIC STATISTICS			
Total Expenditure (<i>US\$ millions</i>)	\$106.9	GDP at Factor Cost (<i>US\$ millions</i>)	\$326.8
Tourism Budget (<i>US\$ 000</i>) ^{IV b}	\$3,238	Consumer Price Index (<i>%ch. 2004/'03</i>)	2.3%
Hotel and Restaurant contribution to GDP	8.5%		
ACCOMMODATION STATISTICS		SOCIO-ECONOMIC STATISTICS	
Rooms ^{VI}	1,754	Land Area (<i>square Kilometres</i>)	269
		Population (<i>thousand mid year 2004</i>)	47.9

ST. KITTS & NEVIS

TOURIST ARRIVALS BY MAIN MARKETS
2004^v



MONTHLY TOURIST ARRIVALS



ST KITTS AND NEVIS

TOURIST ARRIVALS BY COUNTRY OF RESIDENCE

Country of Residence	2000	2001	2002	2003	% Share	
					2004	2004
United States	23474	25558	27525	34962	52341	57.0
Canada	5395	5237	4352	3979	4688	5.1
United Kingdom	12841	8726	5464	6776	8502	9.3
Other Europe	1543	1730	n.a	1244	1563	1.7
OECS	6244	7294	n.a	9852	10595	11.5
Other CARICOM	5441	4569	n.a	2395	2993	3.3
U.S. Virgin Islands	5862	5509	n.a	n.a	n.a	-
Netherlands Antilles	3721	3592	n.a	2370	2622	2.9
Rest of World	8628	8350	30190	7382	8465	9.2
TOTAL	73149	70565	67531	68960	91769	100.0

MONTHLY TOURIST ARRIVALS

Month	*2003	2004	2005	2006	%Change	
					2007	2007/06
January	5526	10080	13079	13417	12296	-8.4
February	6408	13093	13528	13224	10326	-21.9
March	7115	12385	12904	14216	14710	3.5
April	7528	12941	13201	13874	11433	-17.6
May	6515	9624	10506	11629	10134	-12.9
June	9373	11809	11309	13705	11162	-18.6
July	9569	11972	12953	12275	10554	-14.0
August	7944	6842	8716	8678	9120	5.1
September	4743	3856	4255	4414	6189	40.2
October	6073	7202	7348	7582	5433	-28.3
November	8103	7019	7514	7850	9849	25.5
December	11702	10815	11614	12106	11955	-1.2
TOTAL	90599	117638	126927	132970	123161	-7.4

* include same-day visitors

ST KITTS AND NEVIS

CRUISE PASSENGER ARRIVALS*

Month	2003	2004	2005	2006	2007	%Change 2004/03
January	25392	39517	33910	35989	33647	-
February	19415	41646	41430	36752	30994	-
March	20250	35995	41384	38085	39167	-
April	13517	20438	23041	25594	27303	-
May	557	3436	1310	561	3445	-
June	431	5839	0	63	0	-
July	1313	6406	217	145	177	-
August	0	7306	2821	0	0	-
September	0	7739	0	1930	0	-
October	6029	10036	3980	3207	10805	-
November	25257	31728	30502	25103	45657	-
December	38268	44449	38237	35646	56198	-
Total	150429	254535	216832	203075	247393	-

Number of calls	281	n.a	n.a	n.a	n.a
------------------------	-----	-----	-----	-----	-----

* Includes arrivals by yacht

TOURIST ACCOMMODATION (Rooms)

Type of Accommodation	2000	2001	2002	2003	2004
Hotels	n.a	n.a	n.a	n.a	n.a
Apts/Cottages	n.a	n.a	n.a	n.a	n.a
Guest Houses/Other	n.a	n.a	n.a	n.a	n.a
TOTAL	1754	n.a	n.a	n.a	n.a

Source: Statistics Division and Department of Tourism, St Kitts and Nevis

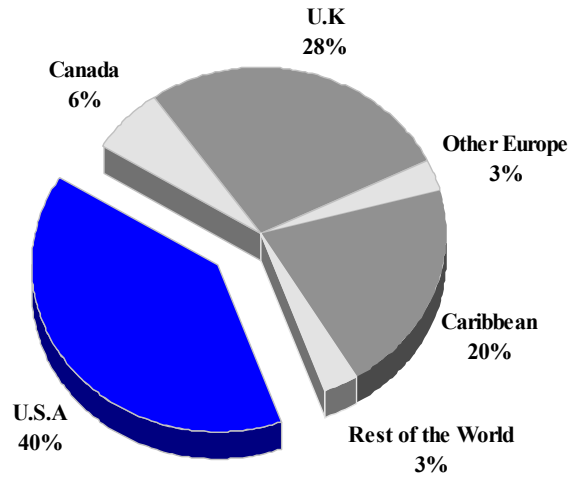
ST. LUCIA

TOURISM HIGHLIGHTS FOR 2007

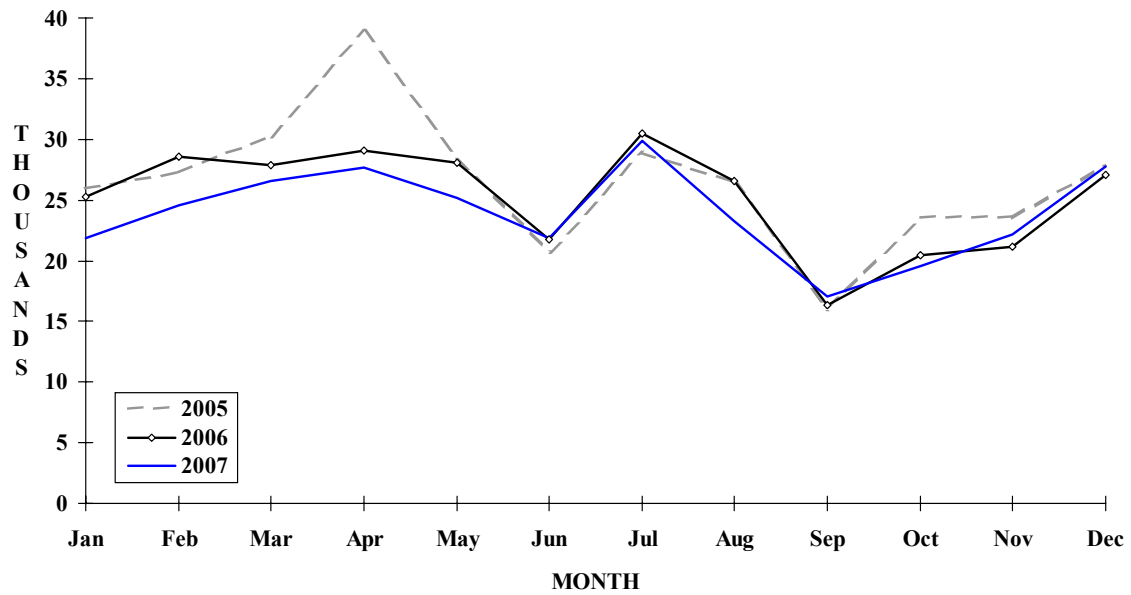
VISITOR ARRIVALS			
Tourist Arrivals ➔	287,518	Cruise Passengers	610,345
➔ <i>Summer</i>	64.9%	➔ <i>Summer</i>	51.5%
➔ <i>Winter</i>	35.1%	➔ <i>Winter</i>	48.5%
Same-day Visitors	7,777	Cruise Ship Calls	314
VISITOR PROFILE			
Average Length of Stay (nights)	9.3	Tourist Arrivals by Place of Stay	
Tourist Arrivals by Purpose of Visit		➔ <i>Hotels</i>	70.3%
➔ <i>Holiday</i>	84.7%	➔ <i>Guest Houses/Apartments</i>	1.7%
➔ <i>Business</i>	3.7%	➔ <i>Private</i>	10.4%
➔ <i>Other</i>	11.6%	➔ <i>Other</i>	17.6%
TOURISM AND OTHER RELATED ECONOMIC STATISTICS			
Total Expenditure (US\$ millions) ^I	\$284.6	GDP at Factor Cost (US\$ millions) ^{III}	\$635.7
Tourism Budget (US\$ thousands) ^{IX b}	\$6,918	Hotel and Restaurant contribution to GDP ^{IV}	13.6%
		Consumer Price Index (% ch. 2004/'03)	1.5%
ACCOMMODATION STATISTICS		SOCIO-ECONOMIC STATISTICS	
Rooms	4,889	Land Area (square Kilometres)	616
Room Occupancy Rates	64.9%	Population (thousand mid year 2006)	166.8

ST. LUCIA

**TOURIST ARRIVALS BY MAIN MARKETS
2007**



MONTHLY TOURIST ARRIVALS



TOURIST ARRIVALS BY COUNTRY OF RESIDENCE

Country of Residence	2003	2004	2005	2006	2007	% Share 2007
United States	98078	107089	112557	117450	113433	39.5
Canada	13494	15315	16506	17491	18640	6.5
United Kingdom	75426	81370	84725	73312	79180	27.5
Germany	3582	3289	3318	2569	1592	0.6
Other Europe	11185	13203	12343	9684	7056	2.5
Caribbean	70543	74242	84729	78464	58917	20.5
Rest of World	4640	3923	3761	3540	8700	3.0
TOTAL	276948	298431	317939	302510	287518	100.0

MONTHLY TOURIST ARRIVALS

Month	2003	2004	2005	2006	2007	%Change 2007/06
January	24930	21532	25997	25215	21887	-13.2
February	21875	25766	27229	28619	24610	-14.0
March	23387	24977	30320	27832	26573	-4.5
April	27993	30131	38901	29024	27716	-4.5
May	25372	26196	28469	28055	25212	-10.1
June	22504	21991	20753	21760	21823	0.3
July	26228	29926	28839	30453	29825	-2.1
August	24632	28079	26474	26538	23249	-12.4
September	17392	17748	16016	16347	17064	4.4
October	19448	22065	23511	20453	19598	-4.2
November	20665	23214	23538	21153	22163	4.8
December	22522	26806	27892	27061	27798	2.7
TOTAL	276948	298431	317939	302510	287518	-5.0

CRUISE PASSENGER ARRIVALS

Month	2003	2004	2005	2006	2007	% Change 2007/06
January	53410	65462	68510	54532	81536	49.5
February	48736	59660	50938	51877	79152	52.6
March	52224	67887	60392	59119	77679	31.4
April	44738	55354	49343	39384	57864	46.9
May	13073	18456	8253	5432	24336	348.0
June	6786	17667	10264	11069	19538	76.5
July	6756	15099	7099	10410	20024	92.4
August	6790	14574	7050	7000	26555	279.4
September	8184	20777	10200	10735	18940	76.4
October	25962	18376	10820	11187	29332	162.2
November	54666	54618	53699	40503	84641	109.0
December	71915	73349	57796	58345	90748	55.5
TOTAL	393240	481279	394364	359593	610345	69.7

Number of Calls	262	328	258	267	314
------------------------	-----	-----	-----	-----	-----

VISITOR ARRIVALS BY CATEGORY

Category	2003	2004	2005	2006	2007	% Share 2007
Tourists	276948	298431	317939	302510	287518	31.7
Cruise Passenger	393240	481279	394364	359593	610345	67.4
Other Same-day Visitors	12817	11441	7541	7051	7777	0.9
TOTAL	683005	791151	719844	669154	905640	100.0

TOURIST ACCOMMODATION (Rooms)

Type of Accommodation	2003	2004	2005	2006	2007
Hotels	3079	3123	3572	3798	3981
Apartments	57	159	166	500	470
Guest Houses	370	405	439	439	438
Villas\Cottages	243	287	334	439	-
TOTAL	3749	3974	4511	5176	4889

Sources: St Lucia Tourist Board and Government Statistical Department

ST. MAARTEN

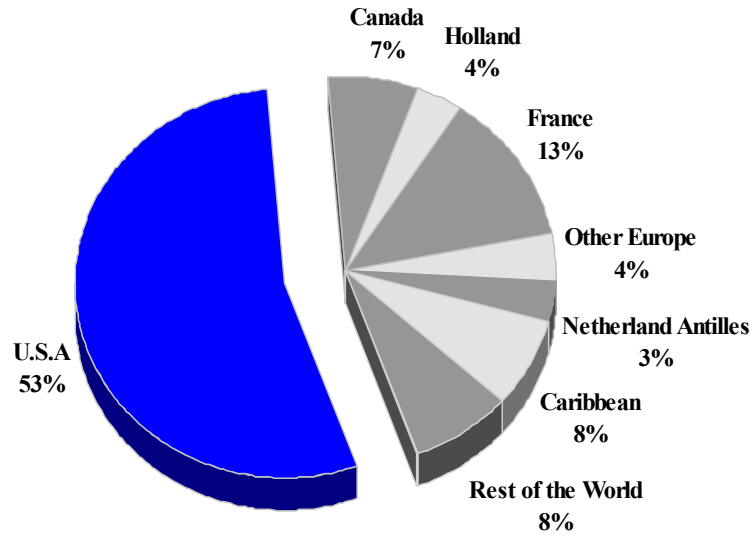
TOURISM HIGHLIGHTS FOR 2007

VISITOR ARRIVALS			
Tourist Arrivals ✈	469,407	Cruise Passengers	1,421,906
➡ <i>Summer</i>	59.9%	➡ <i>Summer</i>	53.5%
➡ <i>Winter</i>	40.1%	➡ <i>Winter</i>	46.5%
Average Length of Stay (<i>nights</i>)	n.a.	Cruise Ship Calls	614
TOURISM AND OTHER RELATED ECONOMIC STATISTICS			
Total Expenditure (<i>US\$ millions</i>) ^{III} *	\$612.8	Consumer Price Index (<i>%ch 2004/'03</i>)	2.1%
Tourism Budget (<i>US\$ thousands</i>) ^{III} ^b	\$5,003		
ACCOMMODATION STATISTICS		SOCIO-ECONOMIC STATISTICS	
Rooms ^V	3,532	Land Area (<i>square Kilometres</i>)	34
Room Occupancy Rates	63.0%	Population (<i>thousand mid year 2006</i>)	37.6

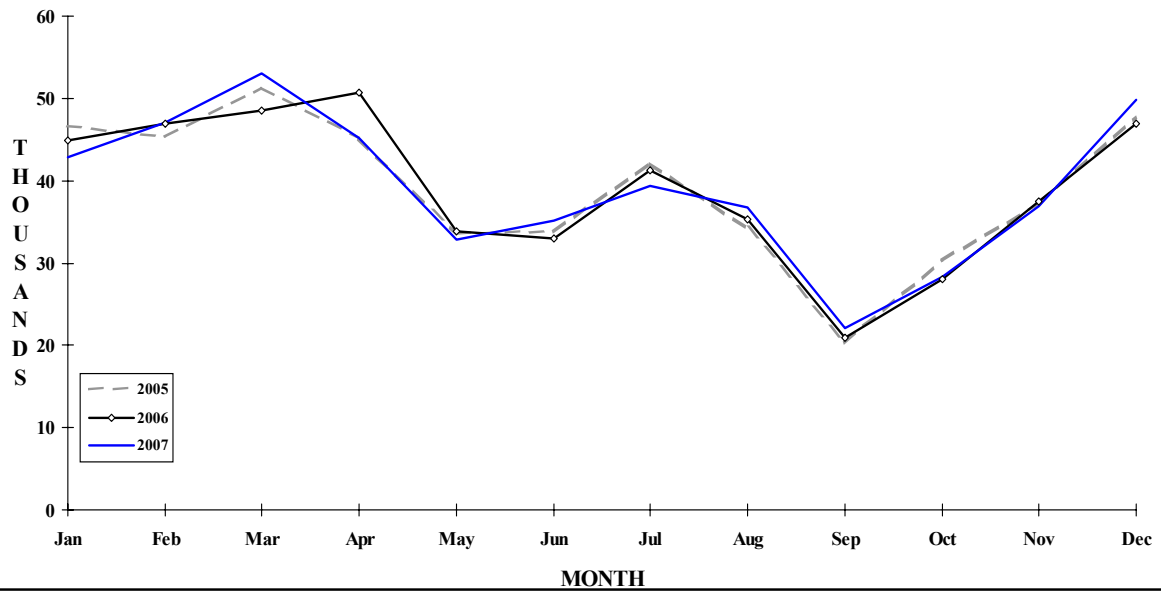
* Includes Visitor Expenditure for Saba and St. Eustatius

ST. MAARTEN

TOURIST ARRIVALS BY MAIN MARKETS 2007



MONTHLY TOURIST ARRIVALS



TOURIST ARRIVALS BY NATIONALITY*

Nationality	2003	2004	2005	2006	2007	% Share 2007
United States	222247	251156	246858	246064	253831	54.1
Canada	29545	31667	34506	30646	32350	6.9
Holland	12918	15554	15441	15842	16889	3.6
France**	58801	62109	60524	63475	61110	13.0
Other Europe	16540	18740	17856	17741	18366	3.9
Neth. Antilles	14742	15505	16650	15746	15543	3.3
Other Caribbean	39913	44906	40426	39034	35209	7.5
Rest of World	32881	35394	35600	39256	36109	7.7
TOTAL	427587	475031	467861	467804	469407	100.0

*By air, including persons destined for St Martin (the French side of the island); Excludes inter-Antillean arrivals

**Includes citizens of the French West Indies.

MONTHLY TOURIST ARRIVALS*

Month	2003	2004	2005	2006	2007	% Change 2007/06
January	39441	45348	46632	44945	42879	-4.6
February	38927	47277	45338	46890	47098	0.4
March	40297	48575	51264	48515	53005	9.3
April	40344	48248	45246	50643	45123	-10.9
May	31833	36054	33578	33782	32863	-2.7
June	30845	32197	33816	32962	35085	6.4
July	36133	40203	42150	41273	39346	-4.7
August	36380	38499	34245	35311	36683	3.9
September	19613	21757	20387	20885	22154	6.1
October	29445	30009	30309	28056	28329	1.0
November	38194	39293	37150	37550	36968	-1.6
December	46135	47571	47746	46992	49874	6.1
TOTAL	427587	475031	467861	467804	469407	0.3

*Arrivals at Juliana Airport (includes visitors destined for St Martin)

CRUISE PASSENGER ARRIVALS

Month	2003	2004	2005	2006	2007	% Change 2007/06
January	134540	147680	178231	165773	195692	18.0
February	117452	141009	164100	157220	160426	2.0
March	121033	158411	182012	176707	176115	-0.3
April	122066	133212	150387	146473	128574	-12.2
May	60364	75237	79501	89624	76668	-14.5
June	52064	87210	77829	69248	69046	-0.3
July	65496	80113	74366	66864	67025	0.2
August	62565	61555	69554	74942	88132	17.6
September	50126	40933	63183	63630	63766	0.2
October	70740	81510	116473	82239	85007	3.4
November	142956	154391	172452	158110	146734	-7.2
December	172332	187189	160373	170815	168021	-1.6
TOTAL	1171734	1348450	1488461	1421645	1425206	0.3

Number of Calls	597	666	641	609	614
------------------------	-----	-----	-----	-----	-----

TOURIST ACCOMMODATION (Rooms)

Type of Accommodation	2003	2004	2005	2006	2007
Hotels	n.a	n.a	n.a	n.a	n.a
Guest Houses	n.a	n.a	n.a	n.a	n.a
Villas/Condos/Apartments	n.a	n.a	n.a	n.a	n.a
Other	n.a	n.a	n.a	n.a	n.a
Total	3532	n.a	n.a	n.a	n.a

Note: The number of rooms in French St Martin was 2903 in 1995 (See Guadeloupe)
Source: St. Maarten Tourist Bureau

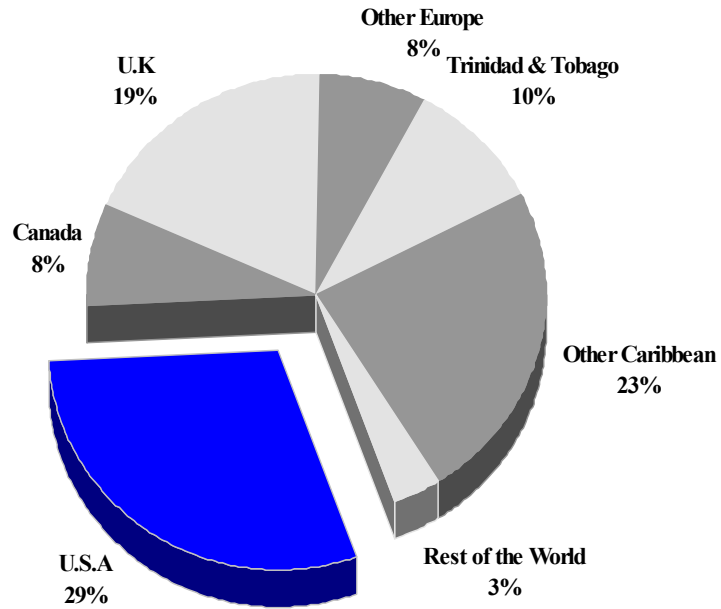
ST VINCENT AND THE GRENADINES

TOURISM HIGHLIGHTS FOR 2007

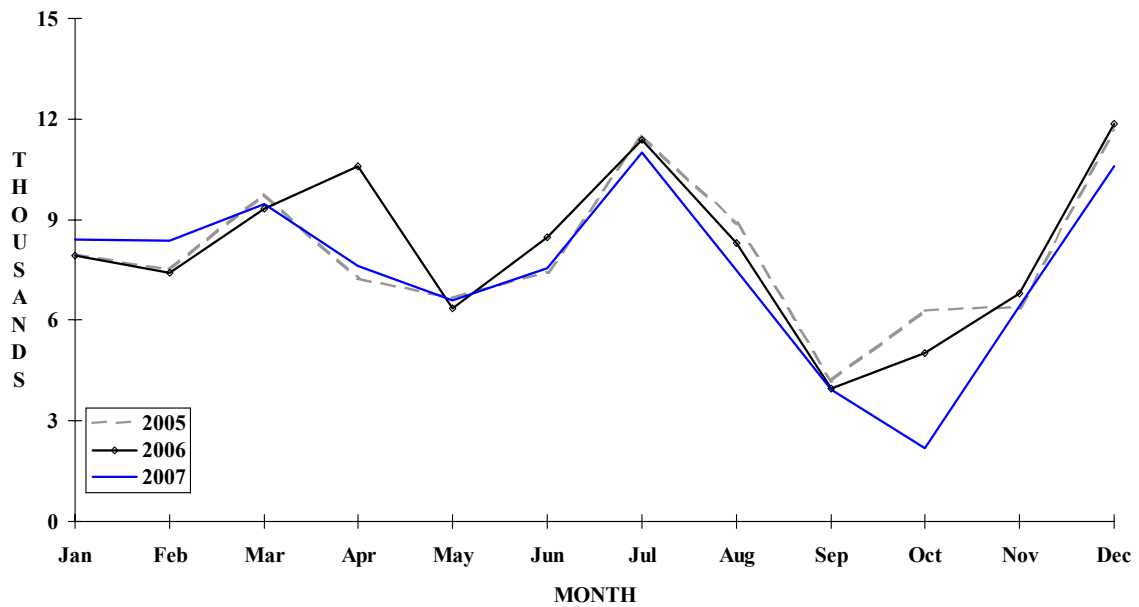
VISITOR ARRIVALS			
Tourist Arrivals →	89,637	Cruise Passengers	144,555
→ <i>Summer</i>	62.2%	→ <i>Summer</i>	38.3%
→ <i>Winter</i>	37.8%	→ <i>Winter</i>	61.7%
		Yacht Passengers	42,277
VISITOR PROFILE			
Average Length of Stay (<i>nights</i>) ¹	12.30	Tourist Arrivals by Place of Stay¹	
Tourist Arrivals by Purpose of Visit¹		→ <i>Hotels</i>	46.6%
→ <i>Holiday</i>	60.8%	→ <i>Guest House/Apartment</i>	9.7%
→ <i>Business</i>	16.7%	→ <i>Private</i>	0.0%
→ <i>Other</i>	22.5%	→ <i>Other</i>	34.8%
TOURISM AND OTHER RELATED ECONOMIC STATISTICS			
Total Expenditure (<i>US\$ millions</i>) ¹	\$113.3	GDP at Factor Cost (<i>US\$ millions</i>) ^{III}	\$337.6
Tourism Budget (<i>US\$ thousand</i>) ^b	\$4,161	Consumer Price Index (<i>%ch. 2004/'03</i>)	3.0%
		Hotel and Restaurant contribution to GDP	1.9%
ACCOMMODATION STATISTICS		SOCIO-ECONOMIC STATISTICS	
Rooms ¹	1,778	Land Area (<i>square Kilometres</i>)	389.0
		Population (<i>thousand mid year 2004</i>)	105.3

ST. VINCENT & THE GRENADINES

TOURIST ARRIVALS BY MAIN MARKETS 2007



MONTHLY TOURIST ARRIVALS



ST VINCENT AND THE GRENADINES

TOURIST ARRIVALS BY COUNTRY OF RESIDENCE

Country of Residence	2003	2004	2005	2006	% share	
					2007	2007
United States	22194	25106	27153	28598	26642	29.7
Canada	4918	5219	6187	6542	6745	7.5
United Kingdom	11547	12610	13941	14837	16742	18.7
Other Europe	5655	6042	5987	7124	6712	7.5
Trinidad & Tobago	9654	10194	11683	11002	8610	9.6
Other Caribbean	23121	25819	28261	27217	21349	23.8
Rest of World	1446	1737	2292	2112	2837	3.2
TOTAL	78535	86727	95504	97432	89637	100.0

MONTHLY TOURIST ARRIVALS

Month	2003	2004	2005	2006	% Change	
					2007	2007/06
January	5417	6038	7963	7943	8406	5.8
February	4009	6394	7515	7404	8381	13.2
March	6175	5165	9764	9345	9461	1.2
April	6987	8307	7255	10581	7636	-27.8
May	5549	6891	6670	6359	6579	3.5
June	7077	7249	7444	8470	7538	-11.0
July	10106	10822	11514	11373	11010	-3.2
August	8142	8790	8871	8316	7468	-10.2
September	3473	3425	4191	3951	3935	-0.4
October	5238	5379	6271	5039	2194	-56.5
November	5508	6627	6400	6789	6440	-5.1
December	10854	11640	11646	11862	10589	-10.7
TOTAL	78535	86727	95504	97432	89637	-8.0

ST VINCENT AND THE GRENADINES

CRUISE PASSENGER ARRIVALS*

Month	2003	2004	2005	2006	% Change	
					2007	2007/06
January	9718	15712	8979	18827	30142	60.1
February	7173	12906	7909	19712	23292	18.2
March	11403	15027	13257	15393	20843	35.4
April	4977	12310	3764	8766	14918	70.2
May	689	744	287	422	6890	1532.7
June	609	375	231	212	2420	1041.5
July	1250	743	153	240	2861	1092.1
August	807	144	75	120	4513	3660.8
September	182	196	82	180	2206	1125.6
October	2127	2784	2501	1644	5135	212.3
November	8314	8246	11735	16701	11053	-33.8
December	17359	8398	20780	24257	20282	-16.4
TOTAL	64608	77585	69753	106474	144555	35.8

VISITOR ARRIVALS BY FIRST PORT OF ENTRY IN 2006

Port	St. Vincent	Bequia	Mustique	Canouan	Union Island	Total
Air*	68398	3193	6795	9060	8990	96436
Sea**	89893	42230	616	456	53637	186832

* Includes same-day visitors

** Includes Cruiseship and Yacht Passengers

Type of Accommodation	2003	2004	2005	2006	2007
Hotels	915	839	826	915	n.a
Apartments	358	526	526	358	n.a
Cottages, Villas,	240	249	249	240	n.a
Guest Houses	167	265	171	265	n.a
TOTAL	1680	1879	1772	1778	n.a

Source: Department of Tourism, St Vincent and the Grenadines