

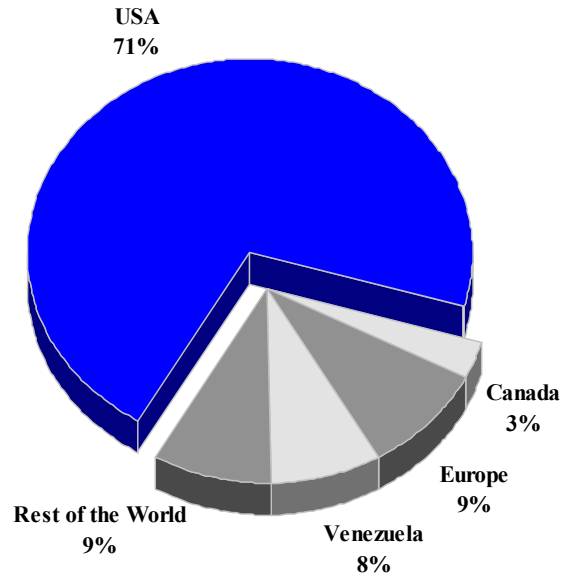
## ARUBA

### TOURISM HIGHLIGHTS FOR 2006

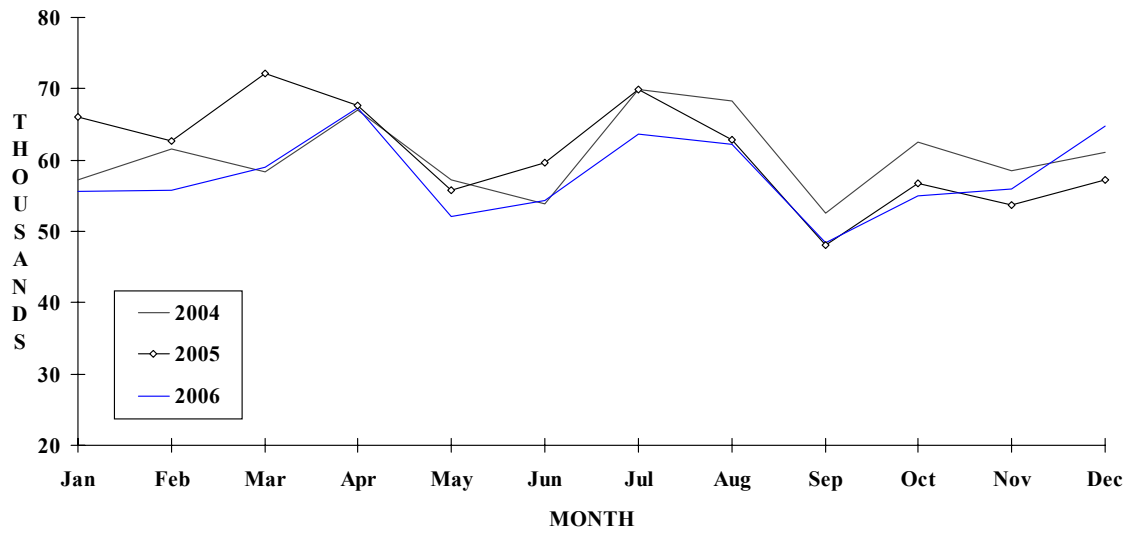
VISITOR ARRIVALS			
Tourist Arrivals ➔	694,372	Cruise Passenger Arrivals	591,474
➔ <i>Winter</i>	33.5%	➔ <i>Winter</i>	46.4%
➔ <i>Summer</i>	66.5%	➔ <i>Summer</i>	53.6%
		Cruise Ship Calls	314
VISITOR PROFILE			
Average Length of Stay (nights)	7.9	<b>Tourist Arrivals by Place of Stay</b>	
<b>Tourist Arrivals by Purpose of Visit</b>		➔ Hotels	87.9%
➔ <i>Holiday</i>	86.0%	➔ Guest Houses/Apartments	1.0%
➔ <i>Business</i>	3.8%	➔ Private	11.1%
➔ <i>Other</i>	10.2%		
TOURISM AND OTHER RELATED ECONOMIC STATISTICS			
Total Expenditure ( <i>US\$ millions</i> )	\$812.4	Tourism Budget ( <i>US\$ thousands</i> )	\$23,595
Receipts per visitor night ( <i>US\$</i> ) <sup>ii</sup>	\$186.59	Consumer Price Index (% <i>ch. 2004/'03</i> )	2.5%
ACCOMMODATION STATISTICS		SOCIO-ECONOMIC STATISTICS	
Rooms	6,886	Land Area ( <i>square Kilometres</i> )	180
Room Occupancy Rate	80.7%	Population ( <i>thousand mid year 2004</i> )	97.5

# ARUBA

**TOURIST ARRIVALS BY MAIN MARKETS  
2006**



**MONTHLY TOURIST ARRIVALS**



## TOURIST ARRIVALS BY COUNTRY OF RESIDENCE

Country of Residence	2002	2003	2004	2005	2006	% Share 2006
U.S.A.	432906	460241	531287	532352	493285	71.0
Canada	17601	17218	20560	21350	22590	3.3
Holland	27992	36415	38122	38667	37130	5.3
Other Europe	15978	18296	22306	24514	24863	3.6
Venezuela	81665	54554	59218	59928	57105	8.2
Brazil	2314	2785	4762	6067	6667	1.0
Other South America	31419	17456	18391	17808	20855	3.0
Neth. Antilles	19602	20962	21472	19071	19924	2.9
Other Caribbean	8784	10526	9799	8848	8461	1.2
Rest of World	4366	3453	2240	3909	3492	0.5
<b>TOTAL</b>	<b>642627</b>	<b>641906</b>	<b>728157</b>	<b>732514</b>	<b>694372</b>	<b>100.0</b>

## MONTHLY TOURIST ARRIVALS

Months	2002	2003	2004	2005	2006	% Change 2006/05
January	52101	50017	57266	66040	55590	-15.8
February	52643	51940	61560	62640	55716	-11.1
March	63683	53389	58272	72188	59032	-18.2
April	56252	55609	67035	67611	67406	-0.3
May	46178	45199	57201	55805	52050	-6.7
June	51139	49479	53908	59632	54390	-8.8
July	56246	60208	69930	69959	63602	-9.1
August	63665	65270	68262	62914	62324	-0.9
September	45828	45480	52611	48047	48470	0.9
October	48285	54826	62487	56805	55048	-3.1
November	52335	56089	58570	53663	56011	4.4
December	54272	54400	61055	57210	64733	13.2
<b>TOTAL</b>	<b>642627</b>	<b>641906</b>	<b>728157</b>	<b>732514</b>	<b>694372</b>	<b>-5.2</b>

## CRUISE PASSENGER ARRIVALS

Months	2002	2003	2004	2005	2006	% Change 2006/05
January	77102	69298	66504	65707	69393	5.6
February	67877	61276	54086	59593	64878	8.9
March	70602	70826	64571	65359	75179	15.0
April	73027	56758	56940	65930	57402	-12.9
May	30695	25615	28250	25642	31445	22.6
June	22150	19815	28046	20662	22817	10.4
July	25234	23379	28809	20778	17034	-18.0
August	25737	23259	28220	19857	24136	21.5
September	16654	23240	24181	15610	22741	45.7
October	36473	46172	56482	34533	46486	34.6
November	66988	50411	62634	77094	75677	-1.8
December	69656	72278	77597	82054	84016	2.4
<b>TOTAL</b>	<b>582195</b>	<b>542327</b>	<b>576320</b>	<b>552819</b>	<b>591204</b>	<b>6.9</b>
Cruise Ship Calls	337	315	318	311	314	

## TOURIST ACCOMMODATION (Rooms)

Type of Accommodation	2002	2003	2004	2005	2006
Hotels, Apartments	n.a	n.a	n.a	n.a	
Condo	n.a	n.a	n.a	n.a	
Other	n.a	n.a	n.a	n.a	
<b>TOTAL</b>	<b>7500</b>	<b>7500</b>	<b>6886</b>	<b>7966</b>	

\* Based on data from the Aruba Hotel and Tourism Association (AHATA)

Source: Aruba Tourism Authority