

## BRITISH VIRGIN ISLANDS

### TOURISM HIGHLIGHTS FOR 2006

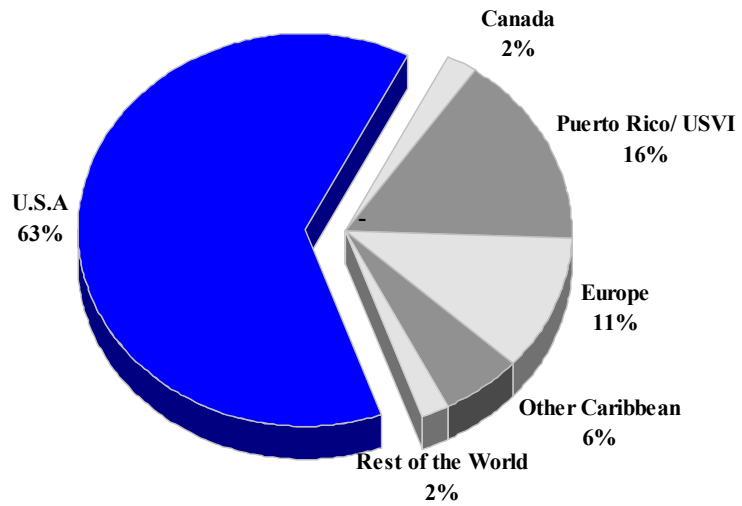
VISITOR ARRIVALS			
Tourist Arrivals ✈	356,271	Cruise Passengers	473,987
➔ <i>Summer</i>	58.1%	➔ <i>Summer</i>	40.7%
➔ <i>Winter</i>	41.9%	➔ <i>Winter</i>	59.3%
Same day visitors		Cruise Ship calls	n.a
VISITOR PROFILE			
Average Length of Stay ( <i>nights</i> )	n.a	<b>Tourist Arrivals by Place of Stay<sup>II</sup></b>	
		➔ <i>Hotels</i>	n.a
<b>Tourist Arrivals by Purpose of Visit<sup>II</sup></b>		➔ <i>Charter Boats</i>	n.a
➔ <i>Holiday</i>	n.a	➔ <i>Private</i>	n.a
➔ <i>Business</i>	n.a	➔ <i>Other Accommodation</i>	n.a
➔ <i>Other</i>	n.a		
TOURISM AND OTHER RELATED ECONOMIC STATISTICS			
Visitor Expenditure ( <i>US\$ millions</i> )	\$392.7	Tourism Budget ( <i>US\$ thousands</i> ) <sup>IV</sup>	\$4,115
Hotel and Restaurant contribution to GDP <sup>I</sup>	16.0%	GDP at Factor Cost ( <i>US\$ millions</i> )	\$879.0
		Consumer Price Index ( <i>%ch. 2004/'03</i> )	1.0%
ACCOMMODATION STATISTICS		SOCIO-ECONOMIC STATISTICS	
Rooms	1,869	Land Area ( <i>square Kilometres</i> )	150
Room Occupancy Rates *	83.4%	Population ( <i>thousand mid year 2004</i> )	21.7

\* Development Planning Unit estimate

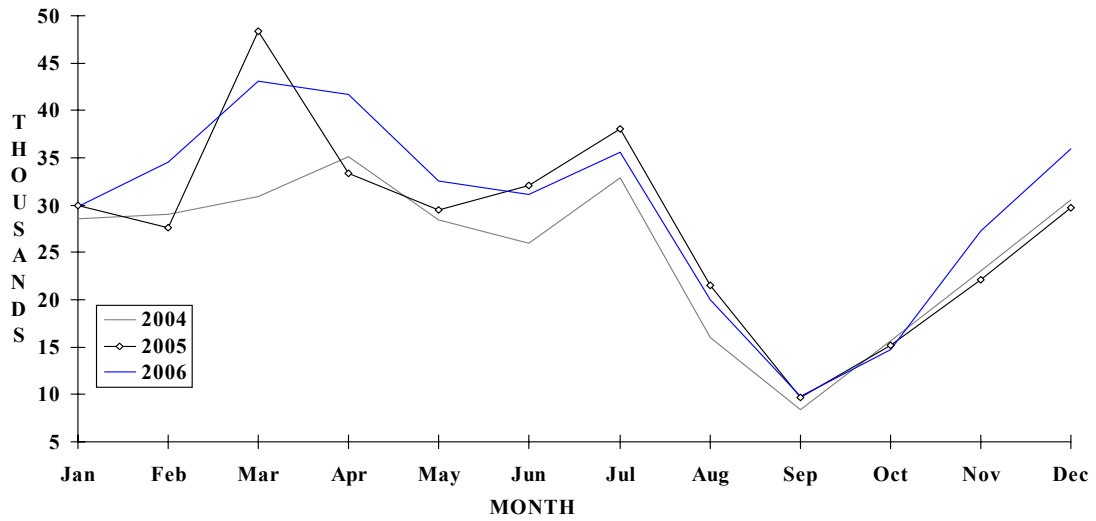
# BRITISH VIRGIN ISLANDS

## TOURIST ARRIVALS BY MAIN MARKETS

2004<sup>e</sup>



## MONTHLY TOURIST ARRIVALS



**BRITISH VIRGIN ISLANDS**

**TOURIST ARRIVALS BY COUNTRY OF RESIDENCE**

Country of Residence	2002	2003	2004	2005	% Share	
					2006	2006
United States	179876	198963	191624	n.a	n.a	n.a
Canada	6307	8206	7453	n.a	n.a	n.a
Europe	28765	37386	33942	n.a	n.a	n.a
Puerto Rico/USVI	45012	49215	47973	n.a	n.a	n.a
Other Caribbean	17417	17662	17678	n.a	n.a	n.a
South America	1276	2372	2092	n.a	n.a	n.a
Other	3043	3954	3757	n.a	n.a	n.a
<b>TOTAL</b>	<b>281696</b>	<b>317758</b>	<b>304519</b>	<b>0</b>	<b>0</b>	<b>-</b>

**MONTHLY TOURIST ARRIVALS**

Month	2002	2003	2004	2005	% Change	
					2006	2006/05
January	26186	28776	28522	30004	29849	-0.5
February	29443	37648	28974	27564	34533	25.3
March	40178	37972	30931	48315	43140	-10.7
April	24440	36660	35115	33341	41703	25.1
May	24804	26166	28402	29510	32486	10.1
June	24859	24769	25977	32057	31171	-2.8
July	25462	28275	32895	38047	35565	-6.5
August	15285	19180	16012	21518	20027	-6.9
September	6638	6587	8400	9725	9815	0.9
October	12189	14627	15713	15137	14725	-2.7
November	23696	22772	23007	22146	27320	23.4
December	28516	34326	30570	29771	35937	20.7
<b>TOTAL</b>	<b>281696</b>	<b>317758</b>	<b>304518</b>	<b>337135</b>	<b>356271</b>	<b>5.7</b>

**BRITISH VIRGIN ISLANDS**

**TOURIST ARRIVALS BY TYPE OF ACCOMMODATION**

Place of Stay	2002	2003	2004	2005	% Share	
					2006	2006
Hotel	57085	60299	85096	94447		??
Rented Accom.	22463	23691	27549	30576		??
Own Home/Friends	27301	21517	23727	26331		??
Charter Boats	174847	212251	167384	185778		??
<b>TOTAL</b>	<b>281696</b>	<b>317758</b>	<b>303756</b>	<b>337132</b>	<b>0</b>	<b>0.0</b>

**CRUISE PASSENGER ARRIVALS**

Month	2002	2003	2004	2005	% Change	
					2006	2006/05
January	41244	37185	72546	67886	98315	44.8
February	29558	38214	63665	60291	67262	11.6
March	33498	49338	72994	63043	64620	2.5
April	31915	42833	44111	40194	50971	26.8
May	7711	7059	16922	15558	13534	-13.0
June	5365	11544	13056	13754	11823	-14.0
July	6279	7510	14383	14440	12643	-12.4
August	4222	12620	11088	14366	15226	6.0
September	1707	2875	11411	10492	10792	2.9
October	7714	17342	20658	29092	22966	-21.1
November	19268	37879	52273	52009	43478	-16.4
December	41586	39939	73494	68027	62357	-8.3
<b>Total</b>	<b>230067</b>	<b>304338</b>	<b>466601</b>	<b>449152</b>	<b>473987</b>	<b>5.5</b>
Cruise ship calls	256	330	n.a	n.a	n.a	
Charter yachts	860	875	863	869	n.a	

**TOURIST ACCOMMODATION (Rooms on land)**

Area	2002	2003	2004	2005	2006
Hotels	1314	1318	1370	1180	
Guest Houses/Apartments	493	497	499	590	
<b>TOTAL</b>	<b>1807</b>	<b>1815</b>	<b>1869</b>	<b>1770</b>	<b>0</b>

Source: Development Planning Unit - British Virgin Islands