

BELIZE

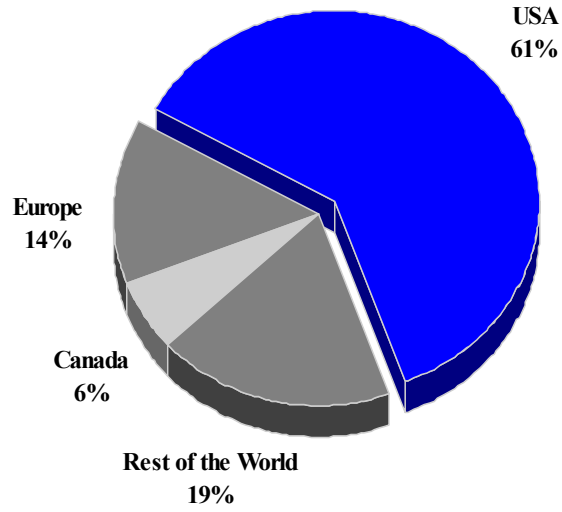
TOURISM HIGHLIGHTS FOR 2006

VISITOR ARRIVALS			
Tourist Arrivals ➔	247,309	Cruise Passenger Arrivals	655,931
➔ <i>Winter</i>	40.4%	➔ <i>Winter</i>	47.8%
➔ <i>Summer</i>	59.6%	➔ <i>Summer</i>	52.2%
		Cruise Ship Calls	295
VISITOR PROFILE			
Average Length of Stay (<i>nights</i>)	6.8	Tourist Arrivals by Place of Stay ¹	
Tourist Arrivals by Purpose of Visit		➔ <i>Hotels</i>	64.7%
➔ <i>Holiday</i>	94.7%	➔ <i>Guest House/Apartment</i>	19.1%
➔ <i>Business</i>	5.3%	➔ <i>Private</i>	9.1%
		➔ <i>Other</i>	7.1%
TOURISM AND OTHER RELATED ECONOMIC STATISTICS			
Total Expenditure (<i>US\$ millions</i>)	\$205.2	GDP at Factor Cost (<i>US\$millions</i>)	\$917.6
Tourism Budget (<i>US\$ thousands</i>) ^{bf}	\$4,838	Consumer Price Index (<i>% ch. 2004/'03</i>)	3.2%
Hotel & Restaurant contribution to GDP	4.4%		
ACCOMMODATION STATISTICS		SOCIO-ECONOMIC STATISTICS	
Rooms	5,151	Land Area (<i>square Kilometres</i>)	22,966
Room Occupancy Rates	40.7%	Population (<i>thousand mid year 2004</i>)	282.6

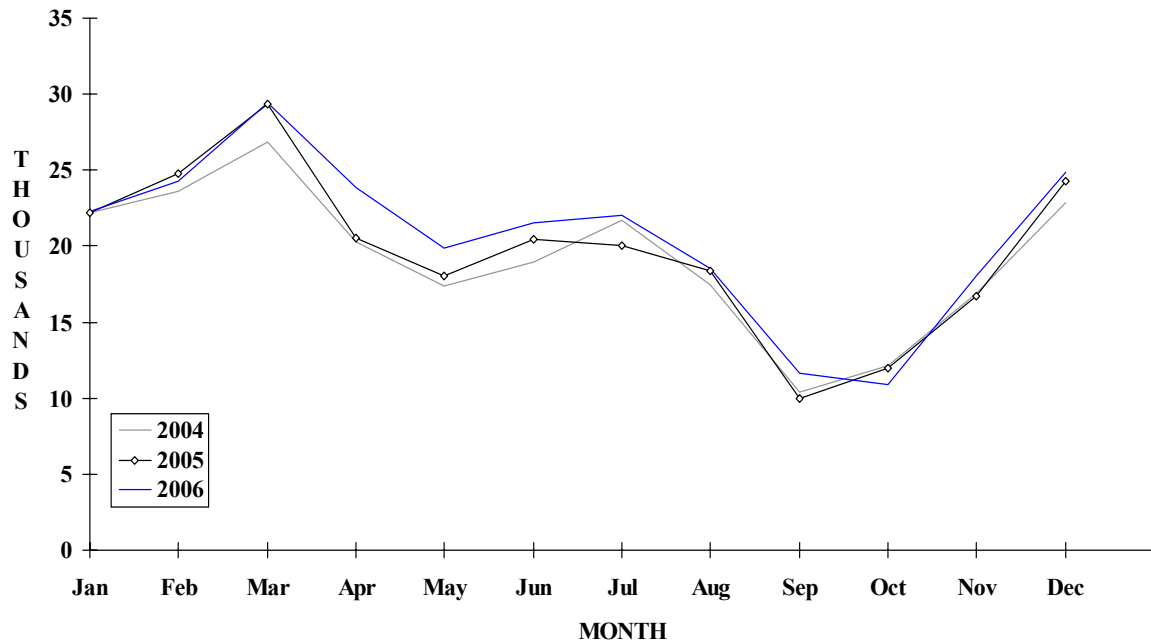
¹ *Source: Belize 2000, Visitor Expenditure and Motivation Survey*

BELIZE

TOURIST ARRIVALS BY MAIN MARKETS 2006



MONTHLY TOURIST ARRIVALS



TOURIST ARRIVALS BY COUNTRY OF RESIDENCE

Country of Residence	2002	2003	2004	2005	% Share	
					2006	2006
United States	104603	127288	137367	145977	151510	61.3
Canada	9185	9831	11926	13580	15553	6.3
Europe	29115	33530	32767	33466	34373	13.9
Rest of World	56618	49925	48772	43550	45873	18.5
TOTAL	199521	220574	230832	236573	247309	100.0

MONTHLY TOURIST ARRIVALS

Months	2002	2003	2004	2005	% Change	
					2006	2006/05
January	17820	19648	22166	22165	22264	0.4
February	19377	20412	23645	24734	24278	-1.8
March	23388	24460	26817	29321	29415	0.3
April	17027	19660	20320	20503	23888	16.5
May	16106	17967	17386	17999	19898	10.6
June	16953	19228	18939	20460	21572	5.4
July	18011	20670	21734	20062	22024	9.8
August	16184	19689	17479	18335	18498	0.9
September	8634	9975	10432	10013	11626	16.1
October	10397	11524	12167	12011	10883	-9.4
November	15603	16313	16873	16711	18079	8.2
December	20021	21028	22874	24259	24884	2.6
TOTAL	199521	220574	230832	236573	247309	4.5

Note: Tourist arrivals for Belize excludes border traffic from Guatemala and Mexico who enter Belize daily to conduct trade. This data broken down by month and market is available from 1998 only

CRUISE PASSENGER ARRIVALS

Months						% Change	
	2002	2003	2004	2005	2006	2006/05	
January	18448	56689	94861	94774	79077	-16.6	
February	19056	48172	87532	96667	77569	-19.8	
March	21822	54151	89807	122802	94631	-22.9	
April	23989	46401	72260	73327	62399	-14.9	
May	22973	24413	50642	48013	27346	-43.0	
June	17473	33623	57160	55432	35335	-36.3	
July	20502	30602	56794	33140	29443	-11.2	
August	16072	38809	57018	48518	33875	-30.2	
September	23095	31430	45132	32554	21431	-34.2	
October	33810	47356	58961	23481	32551	38.6	
November	46377	70377	77579	73175	74960	2.4	
December	56073	93173	103690	98448	87314	-11.3	
TOTAL	319690	575196	851436	800331	655931	-18.0	
Cruise Ship Calls	200	315	406	370	295		

VISITOR ACCOMMODATION (Rooms) BY AREA

Area	2002	2003	2004	2005	2006
Belize District	897	943	884		
Ambergris	1111	1204	1228		
Cayo District	716	752	2233		
Caye Caulker	453	480	515		
Other	1528	1671	291		
TOTAL	4705	5050	5151	0	0

Source: Belize Tourist Bureau, Central Statistical Office