

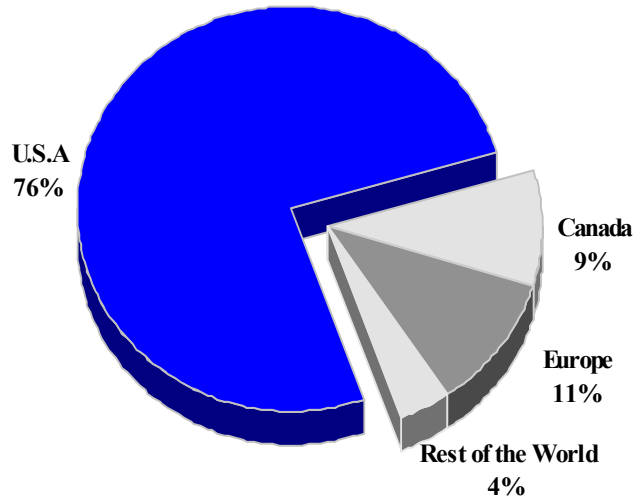
## BERMUDA

### TOURISM HIGHLIGHTS FOR 2006

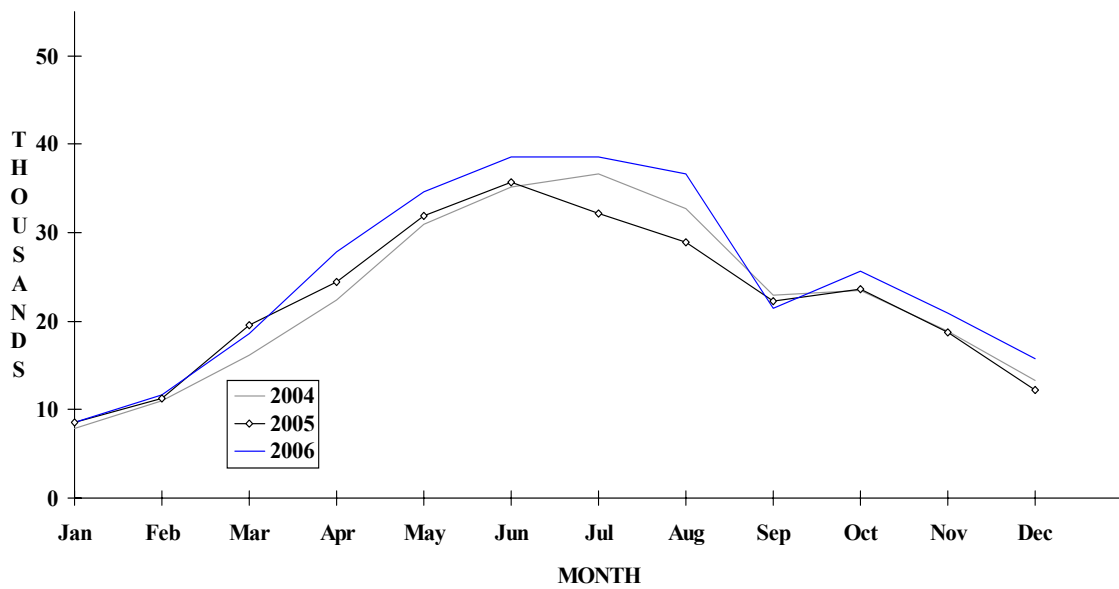
VISITOR ARRIVALS			
Tourist Arrivals ➔ ➔ <i>Winter</i> ➔ <i>Summer</i>	298,973 22.3% 77.7%	Cruise Passenger Arrivals ➔ <i>Winter</i> ➔ <i>Summer</i> Cruise Calls Yacht visitors	336,299 6.2% 93.8% 185 6,445
VISITOR PROFILE			
Average Length of Stay ( <i>nights</i> )  Tourist Arrivals by Purpose of Visit ➔ <i>Holiday</i> ➔ <i>Business</i> ➔ <i>Other</i>	6.4  79.6% 20.5% -	Tourist Arrivals by Place of Stay ➔ <i>Hotels</i> ➔ <i>Guest House/Apartment</i> ➔ <i>Private</i> ➔ <i>Other</i>	56.4% 19.8% 23.5% 0.3%
TOURISM AND OTHER RELATED ECONOMIC STATISTICS			
Total Expenditure ( <i>US\$ millions</i> ) Tourism Budget ( <i>US \$ thousands</i> ) <sup>1b</sup>	\$353.7 \$35,900	Consumer Price Index ( <i>% ch. 2004/'03</i> ) GDP at Factor Cost ( <i>US\$ million</i> )	3.6% \$4,505.3
ACCOMMODATION STATISTICS		SOCIO-ECONOMIC STATISTICS	
Rooms Room Occupancy Rates	2,939 62.4%	Land Area ( <i>square Kilometres</i> ) Population ( <i>thousand mid year 2003</i> )	53 62.0

# BERMUDA

## TOURIST ARRIVALS BY MAIN MARKETS 2006



## MONTHLY TOURIST ARRIVALS



## BERMUDA

## TOURIST ARRIVALS BY COUNTRY OF RESIDENCE

Country of Residence	2002	2003	2004	2005	% Share	
					2006	2006
United States	217868	197911	209054	204005	227725	76.2
Canada	25882	24485	26491	28668	27675	9.3
United Kingdom	25595	21665	21431	22446	27008	9.0
Other Europe	5063	4271	4439	4233	5339	1.8
Rest of World	9561	8244	10202	10235	11226	3.8
<b>TOTAL</b>	<b>283969</b>	<b>256576</b>	<b>271617</b>	<b>269587</b>	<b>298973</b>	<b>100.0</b>

## MONTHLY TOURIST ARRIVALS \*

Months	2002	2003	2004	2005	% Change	
					2006	2006/05
January	8804	8194	7826	8523	8594	0.8
February	12780	11065	11049	11311	11716	3.6
March	20196	18432	16193	19581	18586	-5.1
April	27466	25002	22429	24420	27874	14.1
May	33979	33064	31029	31978	34625	8.3
June	35202	35333	35216	35707	38634	8.2
July	35835	35914	36657	32190	38529	19.7
August	33498	35045	32669	28947	36650	26.6
September	21939	11260	22896	22331	21474	-3.8
October	23979	18979	23447	23665	25700	8.6
November	17894	13259	18923	18743	20887	11.4
December	12397	11029	13283	12172	15704	29.0
<b>TOTAL</b>	<b>283969</b>	<b>256576</b>	<b>271617</b>	<b>269568</b>	<b>298973</b>	<b>10.9</b>

\* Excluding ship/air visitors. Due to a report conflict the monthly numbers are missing a small number of arrivals.

## BERMUDA

## CRUISE PASSENGER ARRIVALS\*

Months						% Change	
	2002	2003	2004	2005	2006	2006/05	
January	0	0	0	0	0	-	
February	0	0	0	0	425	-	
March	585	136	743	497	0	-100.0	
April	5669	9542	11792	6952	20311	192.2	
May	29232	32489	31830	41045	49075	19.6	
June	37085	33660	32744	34776	53174	52.9	
July	36526	43527	33064	32287	63346	96.2	
August	29826	46674	42449	45981	67459	46.7	
September	28543	26620	25782	33759	33662	-0.3	
October	29790	28825	23185	35364	39240	11.0	
November	2809	4073	4023	15669	9306	-40.6	
December	0	551	521	929	301	-67.6	
<b>TOTAL</b>	<b>200065</b>	<b>226097</b>	<b>206133</b>	<b>247259</b>	<b>336299</b>	<b>36.0</b>	

Cruise Ship Calls	145	156	158	161	185
-------------------	-----	-----	-----	-----	-----

\* Including ship/air visitors

## TOURIST ACCOMMODATION (Rooms)

Type of Accommodation	2002	2003	2004	2005	2006
Hotels	2859	1324	2085	2147	n.a
Apartments	212	252	252	233	n.a
Cottage Colonies	71	326	434	516	n.a
Guest Houses	68	n.a	n.a	n.a	n.a
Clubs/Other	41	n.a	n.a	n.a	n.a
<b>Total</b>	<b>3251</b>	<b>1902</b>	<b>2771</b>	<b>2896</b>	<b>0</b>

Source Bermuda Department of Tourism