

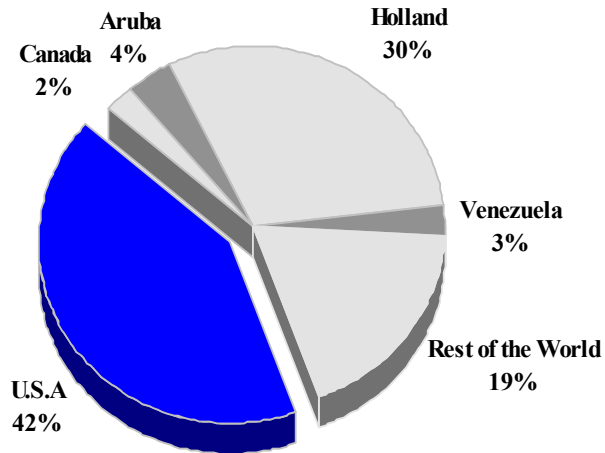
BONAIRE

TOURISM HIGHLIGHTS FOR 2006

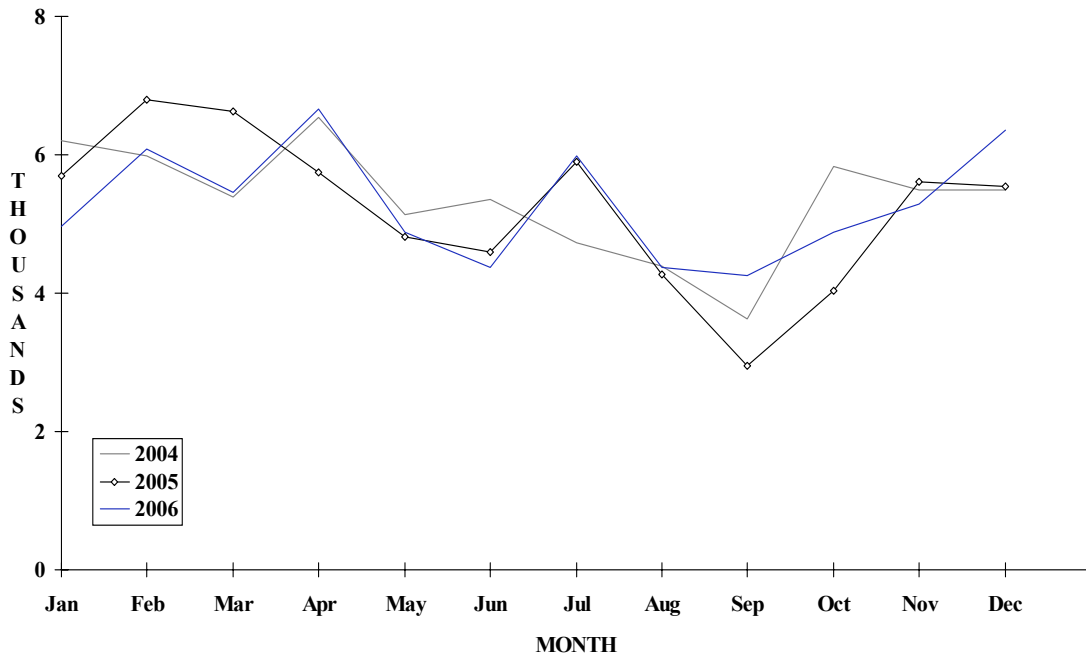
VISITOR ARRIVALS			
Tourist Arrivals ✈	62,550	Cruise Passenger Arrivals	40,077
➡ <i>Winter</i>	39.8%	➡ <i>Winter</i>	48.9%
➡ <i>Summer</i>	60.2%	➡ <i>Summer</i>	51.1%
Same day Visitors		Cruise calls	89
VISITOR PROFILE			
Average Length of Stay (<i>nights</i>)	n.a	Tourist Arrivals by Place of Stay ^{III}	
Tourist Arrivals by Purpose of Visit		➡ <i>Hotels</i>	n.a
➡ <i>Holiday</i>	n.a	➡ <i>Guest House/Apartment</i>	n.a
➡ <i>Business</i>	n.a	➡ <i>Private/Unregistered</i>	n.a
➡ <i>Other</i>	n.a	➡ <i>Other</i>	n.a
TOURISM AND OTHER RELATED ECONOMIC STATISTICS			
Total Expenditure (<i>US\$ millions</i>)	\$83.7	Tourism Budget (<i>US\$ thousands</i>)	\$1,676
		Consumer Price Index (<i>% ch 2004/'03</i>)	1.8%
ACCOMMODATION STATISTICS		SOCIO-ECONOMIC STATISTICS	
Rooms	1,175	Land Area (<i>square Kilometres</i>)	288
Occupancy Rate	61.0%	Population (<i>thousand mid year 2004</i>)	10.2

BONAIRE

TOURIST ARRIVALS BY MAIN MARKETS 2006



MONTHLY TOURIST ARRIVALS



TOURIST ARRIVALS BY COUNTRY OF RESIDENCE *

Country of Residence	2001	2002	2003	2004	2005	% Share 2005
U.S.A.**	26357	26500	25228	26623	25363	40.5
Canada	1098	593	843	1175	1157	1.9
Aruba	1191	2162	2493	2690	2018	3.2
Holland	11860	12814	19987	19506	20676	33.1
Germany	1511	1602	2236	1868	2072	3.3
Venezuela	3462	2150	1725	1633	1632	2.6
Rest World ***	4916	6265	9667	9661	9632	15.4
TOTAL	50395	52086	62179	63156	62550	100.0

* Excluding arrivals from Netherlands Antilles

** Including Puerto Rico

*** Including arrivals from other European countries: 2787 in 2000, 2955 in 2001, 3736 in 2002, 6856 in 2003 and 6539 in 2004.

MONTHLY TOURIST ARRIVALS

Months	2001	2002	2003	2004	2005	% Change 2005/04
January	5595	3385	4612	6201	5702	-8.0
February	5094	4976	5693	5982	6798	13.6
March	5645	5568	5277	5391	6623	22.9
April	5243	3446	6045	6539	5742	-12.2
May	3710	3571	4216	5130	4808	-6.3
June	3729	3720	4317	4352	4599	5.7
July	4093	4540	5544	4736	5897	24.5
August	4036	3704	4558	4387	4272	-2.6
September	2661	3766	4401	3624	2942	-18.8
October	3756	4541	5648	5836	4029	-31.0
November	3730	5118	6081	5492	5603	2.0
December	3103	5751	5787	5486	5535	0.9
TOTAL	50395	52086	62179	63156	62550	-1.0

CRUISE PASSENGERS

Months	2001	2002	2003	2004	2005	% Change 2005/04
January	8116	7277	7545	11484	5049	-56.0
February	6704	7778	8153	9259	5164	-44.2
March	9135	7555	8944	5388	8004	48.6
April	2998	3915	2903	3603	1383	-61.6
May	72	0	225	346	550	59.0
June	0	348	597	0	1406	-
July	78	485	220	574	1166	103.1
August	313	860	650	477	1039	117.8
September	621	775	763	390	765	96.2
October	1786	1482	890	774	584	-24.5
November	4719	4812	5101	7715	5999	-22.2
December	5993	6894	8610	13333	8968	-32.7
TOTAL	14790	42181	44601	53343	40077	-24.9

Cruise calls	71	64	81	72	78
--------------	----	----	----	----	----

TOURIST ACCOMMODATION (Rooms)

Type of Accommodation	2001	2002	2003	2004	2005
Hotels	741	n.a	n.a	n.a	n.a
Apartments	146	n.a	n.a	n.a	n.a
Condominiums	-	n.a	n.a	n.a	n.a
Other	114	n.a	n.a	n.a	n.a
TOTAL	1001	1070	1070	1175	

Source: Bonaire Government Tourist Bureau