

CAYMAN ISLANDS

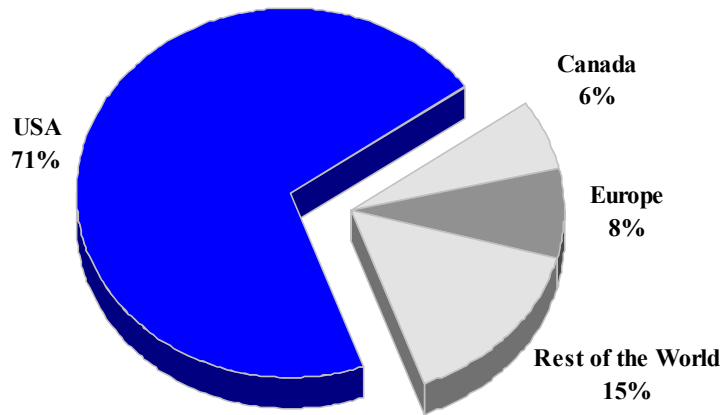
TOURISM HIGHLIGHTS FOR 2006

VISITOR ARRIVALS			
Tourist Arrivals ➔	267,257	Cruise Passengers	1,930,136
➔ <i>Summer</i>	60.7%	➔ <i>Summer</i>	56.0%
➔ <i>Winter</i>	39.3%	➔ <i>Winter</i>	44.0%
		Cruise Ship calls	784
VISITOR PROFILE			
Average Length of Stay (<i>nights</i>)		Tourist Arrivals by Place of Stay¹	
Tourist Arrivals by Purpose of Visit¹		➔ <i>Hotels</i>	40.4%
➔ <i>Holiday</i>	70.4%	➔ <i>Guest Houses/Apartments</i>	16.9%
➔ <i>Business</i>	7.3%	➔ <i>Private homes</i>	21.6%
➔ <i>Other</i>	22.3%	➔ <i>Other</i>	21.1%
TOURISM AND OTHER RELATED ECONOMIC STATISTICS			
Visitor Expenditure (<i>US\$ millions</i>)	\$607.0	GDP at Market Prices (<i>US\$ millions</i>) ¹	\$2,004.0
Tourism Budget (<i>US\$ thousands</i>) ¹¹	\$21,487	Consumer Price Index (% <i>ch. 2004/'03</i>)	4.4%
ACCOMMODATION STATISTICS		SOCIO-ECONOMIC STATISTICS	
Rooms ¹¹	5,238	Land Area (<i>square Kilometres</i>)	260
Room Occupancy Rates - <i>Hotel</i>	61.7%	Population (<i>thousand mid year 2003</i>)	43.6
- <i>Non-hotel</i> **	43.1%		

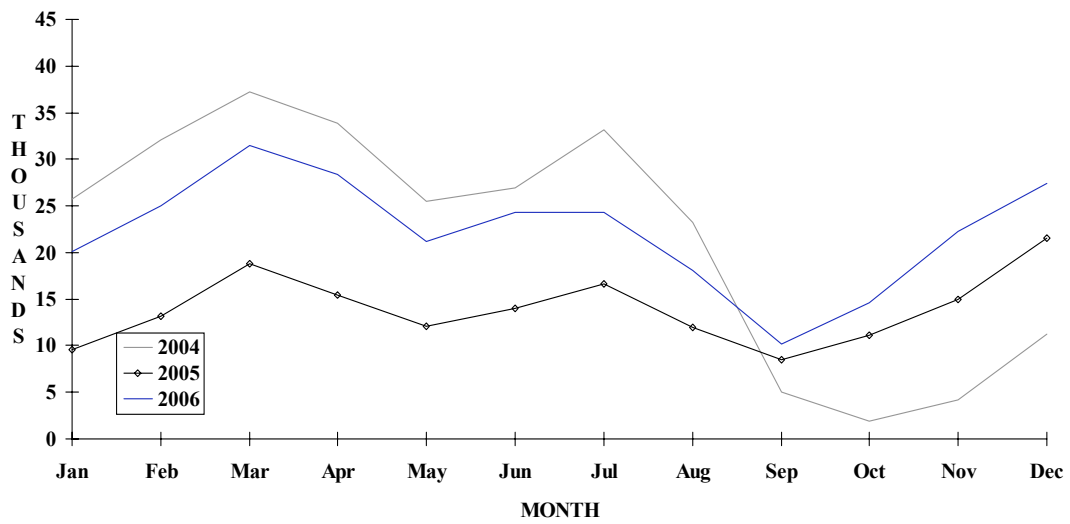
** Includes apartments, condos, guesthouses, villas and bed & breakfast accommodations.

CAYMAN ISLANDS

TOURIST ARRIVALS BY MAIN MARKETS 2005



MONTHLY TOURIST ARRIVALS



CAYMAN ISLANDS

TOURIST ARRIVALS BY COUNTRY OF RESIDENCE

Country of Residence	2002	2003	2004	2005	% Share	
					2006	2006
United States	244862	232413	205206	118843		??
Canada	13569	14125	12116	10480		??
United Kingdom	13691	14115	12182	9991		??
Other Europe	4191	4099	3095	2725		??
Jamaica	15544	18639	18306	17005		??
Other Caribbean *	3436	3261	3231	3211		??
Rest of World	7504	6863	5793	5546		??
TOTAL	345000	293515	259929	167801	0	??

* Includes Costa Rica

MONTHLY TOURIST ARRIVALS

Month	2002	2003	2004	2005	% Change	
					2006	2006/05
January	24545	24725	25689	9601	20163	110.0
February	28608	28270	32022	13202	25004	89.4
March	39378	34421	3248	18810	31493	67.4
April	26768	27807	33903	15423	28403	84.2
May	23229	20909	25502	12061	21172	75.5
June	27017	24662	26890	14008	24251	73.1
July	28844	26491	33118	16610	24256	46.0
August	23961	22422	23191	11917	18064	51.6
September	11333	11336	4982	8494	10155	19.6
October	16151	18879	1968	11104	14634	31.8
November	23903	22745	4215	14979	22276	48.7
December	29060	30848	11201	21592	27386	26.8
TOTAL	345000	293515	225929	167801	267257	59.3

CRUISE PASSENGER ARRIVALS

Month	2002	2003	2004	2005	% Change	
					2006	2006/05
January	156371	180915	207411	170961	211678	23.8
February	142563	171848	192840	201761	180675	-10.5
March	158156	171629	230840	252586	253124	0.2
April	143649	178249	190631	166289	182790	9.9
May	127425	111645	118514	126530	112374	-11.2
June	121301	116292	128390	110633	112190	1.4
July	137742	132933	122967	86539	122781	41.9
August	126643	111875	119367	122562	144179	17.6
September	69328	113258	41596	118466	110971	-6.3
October	88328	159589	0	65651	128754	-
November	130113	163955	149456	176587	160373	-9.2
December	173131	206791	191281	200434	210247	4.9
TOTAL	1574750	1818979	1693293	1798999	1930136	7.3
Cruise ship calls	612	731	830	732	784	

TOURIST ACCOMMODATION (Rooms)

Type of Accommodation	2002	2003	2004	2005	2006
Hotels	2712	2473	n.a	n.a	
Apts./Cottages	-	n.a	n.a	n.a	
Guest Houses	-	n.a	n.a	n.a	
Other	2526	2635	n.a	n.a	
TOTAL	5238	5108	0	n.a	n.a

* Closure of Holiday Inn and conversion of Royal Pavilion to office use were mainly responsible for room reduction in 1998

** Includes Apartments, Guesthouses, Villas & Condos

Source: Department of Tourism, Cayman Islands