

## CUBA

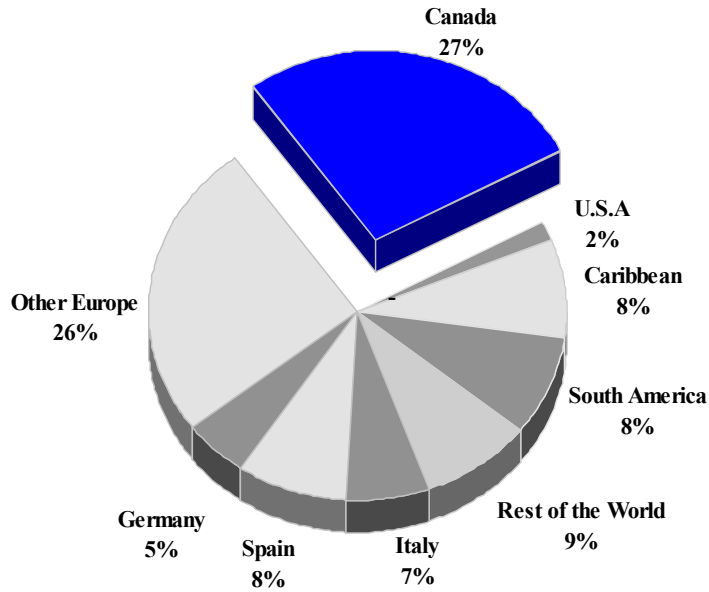
### TOURISM HIGHLIGHTS FOR 2006

VISITOR ARRIVALS			
Tourist Arrivals ✈	2,220,567	Cruise Passengers	<u>NOT AVAILABLE</u>
➔ Summer	56.0%		
➔ Winter	44.0%		
VISITOR PROFILE			
Average Length of Stay ( <i>nights</i> ) <sup>1</sup>	10.5	<b>Tourist Arrivals by Purpose of Visit</b>	
		➔ <i>Holiday</i>	89.8%
		➔ <i>Business</i>	0.6%
		➔ <i>Other</i>	9.6%
TOURISM AND OTHER RELATED ECONOMIC STATISTICS			
Total Expenditure ( <i>US\$ millions</i> )	\$2,113.6	GDP at Factor Cost ( <i>US\$ millions</i> ) <sup>1#</sup>	\$28,393.1
		Hotel and Restaurant contribution to GDP <sup>1</sup>	28.8%
ACCOMMODATION STATISTICS		SOCIO-ECONOMIC STATISTICS	
Rooms	45,270	Land Area ( <i>square Kilometres</i> )	110,860
Room Occupancy Rates	63.5%	Population ( <i>thousand mid year 2004</i> )	11,235.7

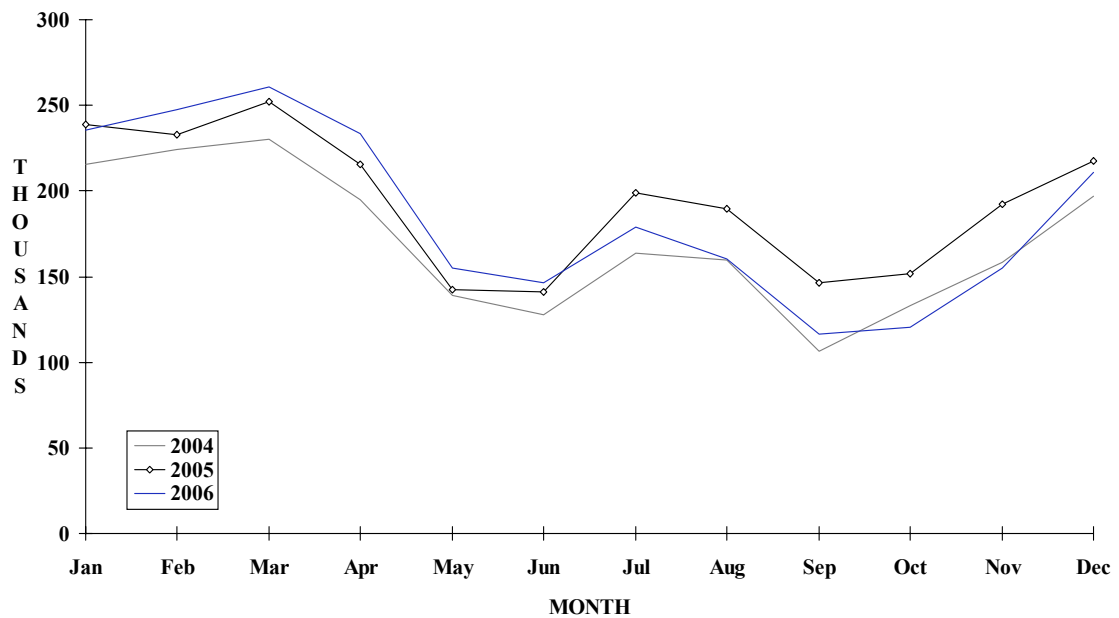
<sup>#</sup> Figure used is Gross Social Product

# CUBA

**TOURIST ARRIVALS BY MAIN MARKETS  
2006**



**MONTHLY TOURIST ARRIVALS**



## CUBA

## TOURIST ARRIVALS BY COUNTRY OF RESIDENCE\*

Country of Residence	2002	2003	2004	2005	2006	% Share 2006
United States	77646	84529	49856	37233	36808	1.7
Canada	348468	452438	563371	602377	604263	27.2
Italy	147750	177627	178570	169317	144249	6.5
Spain	138609	127666	146236	194103	185531	8.4
Germany	152662	157721	143644	124527	114292	5.1
Other Europe	420108	479038	508277	559722	569201	25.6
South America	72507	78831	163206	280827	186140	8.4
Caribbean	180251	191594	144861	176455	187577	8.4
Other	148161	156238	150551	174773	192506	8.7
<b>Total</b>	<b>1686162</b>	<b>1905682</b>	<b>2048572</b>	<b>2319334</b>	<b>2220567</b>	<b>100.0</b>

\* Includes same-day visitors

° Includes Central America

## MONTHLY TOURIST ARRIVALS

Month	2002	2003	2004	2005	2006	% Change 2006/05
January	140792	190669	215727	238729	235500	-1.4
February	161114	191650	223946	232938	247475	6.2
March	199723	212441	229905	252009	260446	3.3
April	143478	179104	194959	215757	233259	8.1
May	111491	118759	138708	142354	155132	9.0
June	111153	113949	127458	140868	146413	3.9
July	140167	148650	163488	199129	178758	-10.2
August	139544	161345	159642	189692	160456	-15.4
September	101121	107450	106619	146286	116421	-20.4
October	107340	121834	132915	151782	120506	-20.6
November	138911	155884	158212	192491	155142	-19.4
December	191328	203947	196993	217299	211059	-2.9
<b>TOTAL</b>	<b>1686162</b>	<b>1905682</b>	<b>2048572</b>	<b>2319334</b>	<b>2220567</b>	<b>-4.3</b>

**TOURIST ACCOMMODATION (Rooms)**

<b>Category</b>	<b>2002</b>	<b>2003</b>	<b>2004</b>	<b>2005</b>	<b>2006</b>
2-Star	3650	4046	4099	4158	
3-Star	7369	7556	7590	7698	
4-Star	15976	17006	18247	17971	
5-Star	7482	8076	8106	8458	
Other*	6846	7012	7228	7359	
<b>TOTAL</b>	<b>41323</b>	<b>43696</b>	<b>45270</b>	<b>45644</b>	<b>0</b>

*Source: National Institute of Tourism (Intur), Cuba*