

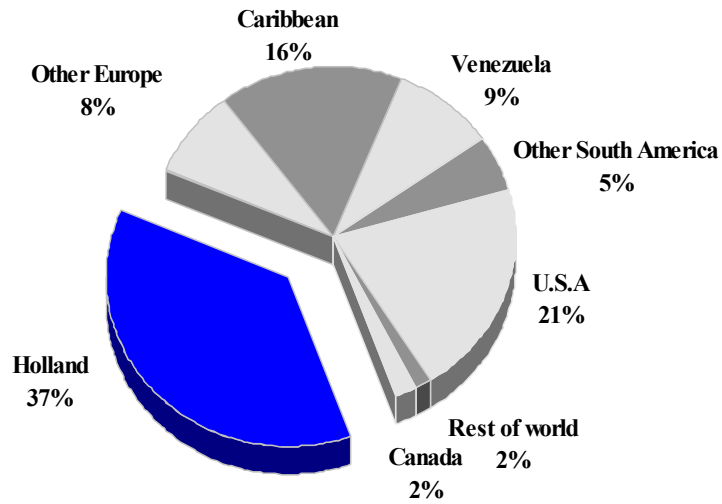
CURACAO

TOURISM HIGHLIGHTS FOR 2006

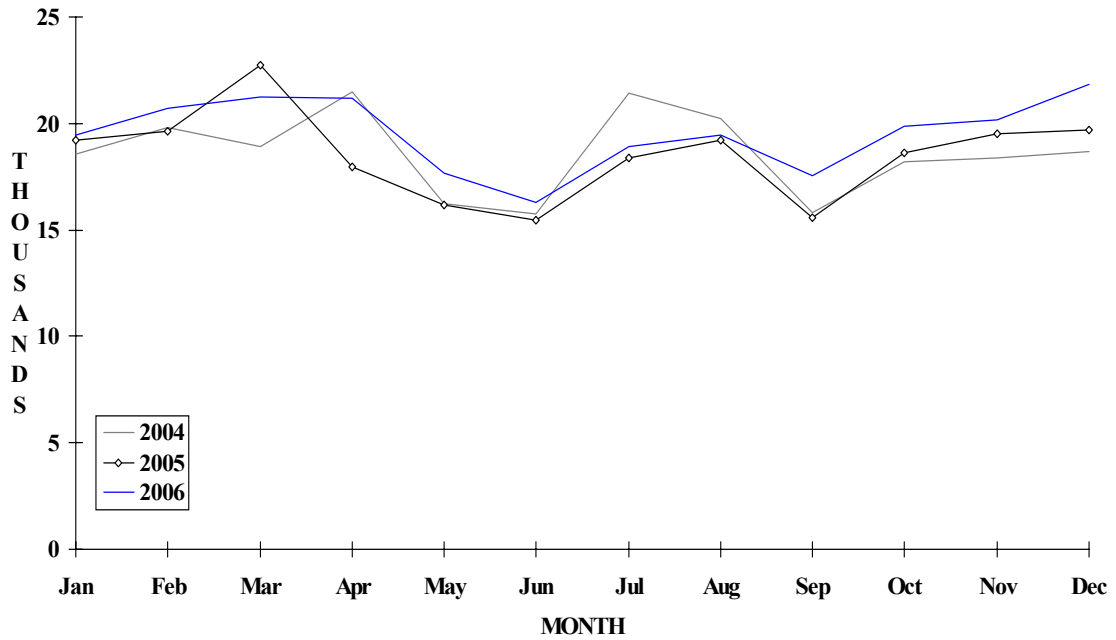
VISITOR ARRIVALS			
Tourist Arrivals ✈	234,383	Cruise Passengers	321,551
➔ <i>Summer</i>	64.8%	➔ <i>Summer</i>	52.1%
➔ <i>Winter</i>	35.2%	➔ <i>Winter</i>	47.9%
		Cruise Ship calls	205
VISITOR PROFILE			
Average Length of Stay (<i>nights</i>)	n.a	Tourist Arrivals by Place of Stay	
Tourist Arrivals by Purpose of Visit		➔ <i>Hotels</i>	n.a
➔ <i>Holiday</i>	n.a	➔ <i>Guest Houses/Apartments</i>	n.a
➔ <i>Business</i>	n.a	➔ <i>Private</i>	n.a
➔ <i>Other</i>	n.a	➔ <i>Other</i>	n.a
TOURISM AND OTHER RELATED ECONOMIC STATISTICS			
Total Expenditure (<i>US\$ millions</i>)	\$295.8	Consumer Price Index (<i>% ch. 2004/'03</i>)	1.4%
Tourism Budget (<i>US\$ thousands</i>) ^{IV}	\$9,343		
ACCOMMODATION STATISTICS		SOCIO-ECONOMIC STATISTICS	
Rooms	3,444	Land Area (<i>square Kilometres</i>)	444
Room Occupancy Rates	69.3%	Population (<i>thousand mid year 2004</i>)	133.4

CURACAO

TOURIST ARRIVALS BY MAIN MARKETS 2006



MONTHLY TOURIST ARRIVALS



CURACAO

TOURIST ARRIVALS BY COUNTRY OF RESIDENCE

Country of Residence	2002	2003	2004	2005	2006	% Share 2006
United States	38947	40019	43105	45563	47428	20.2
Canada	1956	3786	4101	5223	7422	3.2
Holland	55256	75999	73798	77879	85246	36.4
Other Europe	15134	15385	15954	17078	18986	8.1
Dominican Republic	8620	7009	6435	4639	3366	1.4
Aruba	11989	12561	13102	10702	12729	5.4
Haiti	5491	4836	2924	1832	1697	0.7
Puerto Rico	1287	1127	1188	963	1249	0.5
Other C'bean*	23090	21798	21648	20030	18893	8.1
Venezuela	30389	25099	27639	24259	21446	9.2
Other South America**	19237	9559	8731	10168	12291	5.2
Rest of World	6567	4217	4814	3737	3630	1.5
TOTAL	217963	221395	223439	222073	234383	100.0

*Excludes residents of Netherlands Antilles

**Includes Suriname from 1994-1995

MONTHLY TOURIST ARRIVALS

Month	2002	2003	2004	2005	2006	% Change 2006/05
January	18723	17714	18539	19209	19479	1.4
February	18549	17869	19810	19628	20698	5.5
March	20196	17394	18930	22721	21251	-6.5
April	19632	19467	21498	17930	21166	18.0
May	15830	15400	16223	16150	17675	9.4
June	15281	16011	15745	15440	16259	5.3
July	18195	20949	21446	18398	18940	2.9
August	19340	18742	20242	19215	19467	1.3
September	16053	17109	15815	15578	17556	12.7
October	17678	20909	18178	18591	19873	6.9
November	18721	19260	18352	19517	20187	3.4
December	19765	20571	18661	19692	21832	10.9
TOTAL	217963	221395	223439	222069	234383	5.5

CRUISE PASSENGER ARRIVALS

Month	2002	2003	2004	2005	2006	% Change 2006/05
January	58196	48617	27218	45543	46342	1.8
February	48222	35433	20177	31775	36089	13.6
March	46990	41179	31174	34933	47695	36.5
April	44952	31492	15739	21107	23810	12.8
May	6933	10760	3794	9674	13509	39.6
June	7187	7721	2717	8293	7082	-14.6
July	10896	10723	7954	8322	7621	-8.4
August	7528	7242	7680	10509	11816	12.4
September	7159	7605	6679	7279	7642	5.0
October	12515	16917	11725	16182	22602	39.7
November	28899	29287	34762	44369	48971	10.4
December	38901	32402	49766	38231	48372	26.5
TOTAL	318378	279378	219385	276217	321551	16.4

Number of Calls 184

TOURIST ACCOMMODATION (Rooms)

Type of Accommodation	2002	2003	2004	2005	2006
Hotels	2957	n.a	n.a	n.a	
Apartments	260	n.a	n.a	n.a	
Villas/Cottages	-	n.a	n.a	n.a	
Guest Houses	21	n.a	n.a	n.a	
Other	-	n.a	n.a	n.a	
TOTAL	2768	0	3369	3444	

Source: Curacao Tourism Development Bureau