

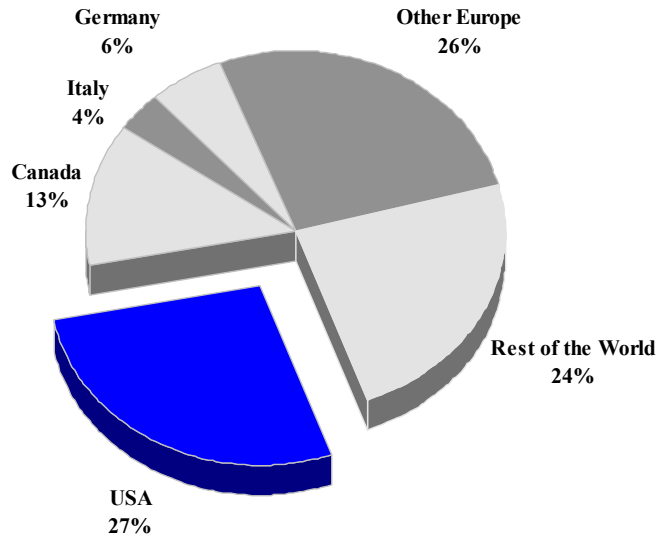
DOMINICAN REPUBLIC

TOURISM HIGHLIGHTS FOR 2006

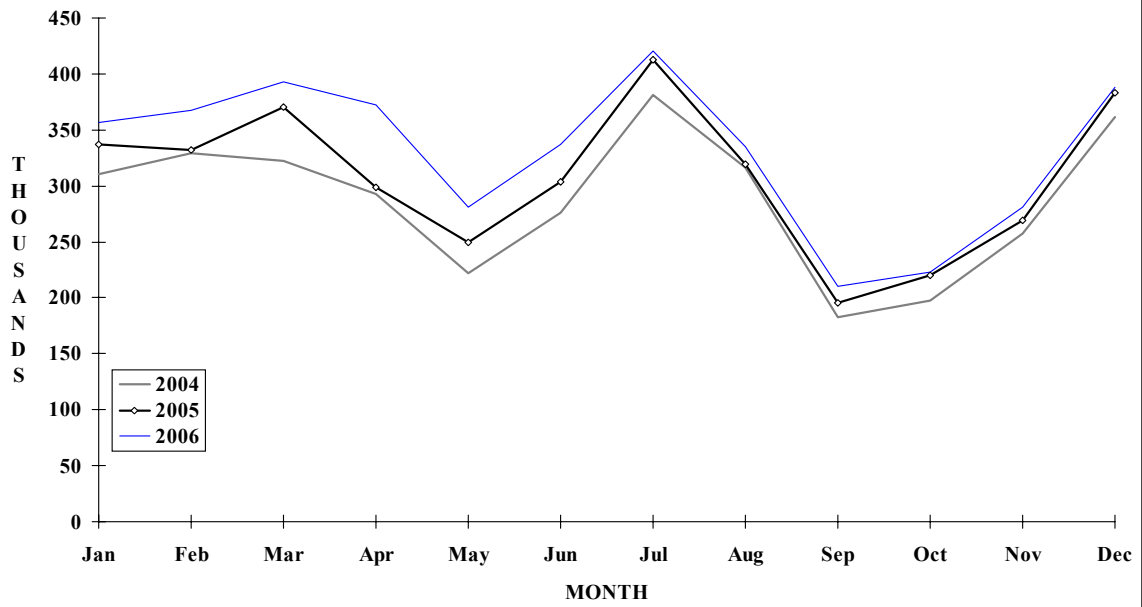
| VISITOR ARRIVALS | | | |
|---|-----------------------------|---|-----------------------|
| Tourist Air Arrivals ✈ ➡ <i>Summer</i> ➡ <i>Winter</i> | 3,965,055 62.4% 37.6% | Cruise Passengers Cruise ship calls | 303,489 n.a |
| VISITOR PROFILE | | | |
| Average Length of Stay (nights) | 8.9 | Tourist Arrivals by Purpose of Visit | |
| Tourist Arrivals by Place of Stay ➡ <i>Hotels</i> ➡ <i>Other</i> | 76.9% 23.1% | ➡ <i>Holiday</i> ➡ <i>Business</i> ➡ <i>Other</i> | 96.8% 2.0% 1.2% |
| TOURISM AND OTHER RELATED ECONOMIC STATISTICS | | | |
| Visitor Expenditure (<i>US\$ millions</i>) | \$3,180.4 | GDP at Factor Cost (<i>US\$ millions</i>) | \$16,846.5 |
| Consumer Price Index (% ch. 2004/'03) | 51.5% | Hotel and Restaurant contribution to GDP | 7.3% |
| ACCOMMODATION STATISTICS | | SOCIO-ECONOMIC STATISTICS | |
| Rooms | 59,082 | Land Area (<i>square Kilometres</i>) | 48,442 |
| Room Occupancy Rates | 74.2% | Population (<i>thousand mid year 2004</i>) | 9,084.0 |

DOMINICAN REPUBLIC

**TOURIST ARRIVALS BY MAIN MARKETS
2006**



MONTHLY TOURIST ARRIVALS



DOMINICAN REPUBLIC

TOURIST AIR ARRIVALS BY NATIONALITY

| Nationality | 2002 | 2003 | 2004 | 2005 | 2006 |
|---------------|----------------|----------------|----------------|----------------|----------------|
| Non-Nationals | 2295630 | 2747899 | 2872680 | 3088247 | 3342106 |
| Dominicans* | 497579 | 520283 | 577500 | 602445 | 622949 |
| TOTAL | 2793209 | 3268182 | 3450180 | 3690692 | 3965055 |

*Dominican nationals resident overseas.

VISITOR ARRIVALS* BY MODE OF ARRIVAL

| Mode of Arrival | 2002 | 2003 | 2004 | 2005 | 2006 |
|-----------------|----------------|----------------|----------------|---------------|----------------|
| Air | 2793209 | 3268182 | 3450180 | 360692 | 3965055 |
| Sea* | n.a | n.a | n.a | n.a | n.a |
| TOTAL | 2793209 | 3268182 | 3450180 | 360692 | 3965055 |

*Includes Cruise passenger arrivals

FOREIGN VISITOR AIR ARRIVALS BY NATIONALITY

| Country of Residence | 2002 | 2003 | 2004 | 2005 | 2006 | %Share 2006 |
|----------------------|----------------|----------------|----------------|----------------|----------------|----------------|
| U.S.A | 710875 | 865942 | 933017 | 1010012 | 1092317 | 27.5 |
| Canada | 313491 | 412625 | 448926 | 427074 | 509323 | 12.8 |
| Italy | 113569 | 135293 | 124004 | 133954 | 144115 | 3.6 |
| Germany | 240546 | 243135 | 233146 | 234800 | 226737 | 5.7 |
| United Kingdom | 146257 | 171696 | 198014 | 217945 | 242559 | 6.1 |
| Other Europe | 545948 | 715854 | 732620 | 808710 | 812511 | 20.5 |
| Other | 707117 | 248664 | 780453 | 858197 | 937493 | 23.6 |
| TOTAL | 2777803 | 2793209 | 3450180 | 3690692 | 3965055 | 100.0 |

FOREIGN VISITOR AIR ARRIVALS

| Month | 2002 | 2003 | 2004 | 2005 | 2006 | % Change 2006/05 |
|--------------|----------------|----------------|----------------|----------------|----------------|---------------------|
| January | 216795 | 286589 | 310003 | 336746 | 356247 | 5.8 |
| February | 244024 | 293289 | 329014 | 331651 | 367698 | 10.9 |
| March | 285110 | 299597 | 321984 | 369991 | 393014 | 6.2 |
| April | 215449 | 270960 | 293048 | 298746 | 371953 | 24.5 |
| May | 185663 | 211592 | 221596 | 249561 | 280738 | 12.5 |
| June | 224456 | 256771 | 276484 | 303950 | 336738 | 10.8 |
| July | 287364 | 351923 | 381284 | 412849 | 420265 | 1.8 |
| August | 245825 | 312545 | 316866 | 319705 | 335081 | 4.8 |
| September | 170267 | 191877 | 183234 | 195593 | 210695 | 7.7 |
| October | 171778 | 201939 | 197614 | 219649 | 223449 | 1.7 |
| November | 223904 | 247155 | 257068 | 268759 | 281308 | 4.7 |
| December | 322574 | 343945 | 361985 | 383492 | 387869 | 1.1 |
| TOTAL | 2793209 | 3268182 | 3450180 | 3690692 | 3965055 | 7.4 |

* Including Dominican nationals resident overseas.

MONTHLY CRUISE ARRIVALS

| Month | 2002 | 2003 | 2004 | 2005 | 2006 | % Change 2006/05 |
|--------------|---------------|---------------|---------------|---------------|---------------|---------------------|
| January | 35944 | 48374 | 75635 | 47227 | 47014 | -0.5 |
| February | 35579 | 46955 | 74547 | 54706 | 54168 | -1.0 |
| March | 38025 | 57717 | 77393 | 55186 | 56989 | 3.3 |
| April | 26658 | 53638 | 57380 | 32456 | 29186 | -10.1 |
| May | 5765 | 12039 | 12697 | 6370 | 10650 | 67.2 |
| June | 10433 | 14459 | 13543 | 7634 | 7183 | -5.9 |
| July | 12703 | 23303 | 18743 | 11762 | 14961 | 27.2 |
| August | 6643 | 12322 | 13057 | 5365 | 8226 | 53.3 |
| September | 3163 | 7503 | 5127 | 4502 | 3613 | -19.7 |
| October | 7076 | 19523 | 13415 | 2255 | 4241 | 88.1 |
| November | 19922 | 36187 | 34856 | 17113 | 20065 | 17.3 |
| December | 44781 | 65973 | 59928 | 45229 | 47193 | 4.3 |
| TOTAL | 283414 | 182220 | 456321 | 289805 | 303489 | 4.7 |

TOURIST ACCOMMODATION (Rooms)

| Rooms | 2002 | 2003 | 2004 | 2005 | 2006 |
|-----------------|--------------|--------------|--------------|--------------|------|
| Hotels | n.a | n.a | n.a | 56555 | n.a |
| Apartments | n.a | n.a | n.a | 376 | n.a |
| Villas/Cottages | n.a | n.a | n.a | 610 | n.a |
| Other | n.a | n.a | n.a | 2329 | n.a |
| TOTAL | 54730 | 56378 | 59082 | 59870 | |

* Preliminary

**Source: Banco Central de la Republica Dominicana