

## GUADELOUPE

*(including Les Saintes, Desirade, Marie Galante, St Barthelemy and St Martin)*

### Visitor Arrival Summary

Data was unavailable for Guadeloupe in 2004.

#### TOURISM HIGHLIGHTS FOR 2006

| VISITOR ARRIVALS  |                               |   |                                  |
|---|-------------------------------|---|----------------------------------|
| *Tourist Arrivals <sup>III</sup> ➔<br>➔ Summer <sup>1</sup><br>➔ Winter <sup>1</sup>  | 623,134<br>40%<br>60%         | Cruise Passengers<br>➔ Summer<br>➔ Winter<br>Cruise calls   | 195,102<br>62.6%<br>37.4%<br>284 |
| VISITOR PROFILE   |                               |   |                                  |
| Average Length of Stay (nights)<br><br>Tourist Arrivals by Purpose of Visit <sup>VI</sup><br>➔ Holiday<br>➔ Business<br>➔ Other | 3.5<br><br>88%<br>12%<br>n.a. | Tourist Arrivals by Place of Stay <sup>VI</sup><br>➔ Hotels<br>➔ Guest House/Apartments<br>➔ Private<br>➔ Other | 70%<br>24%<br>n.a.<br>6%         |
| TOURISM AND OTHER ECONOMIC STATISTICS   |                               |   |                                  |
| Total Expenditure (US\$ millions) <sup>VI</sup>   | \$314.5                       | Tourism Budget (US\$ thousands) <sup>b</sup><br>Consumer Price Index (% ch. 2003/'02)                           | \$8,137<br>1.6%                  |
| ACCOMMODATION STATISTICS  |                               | SOCIO-ECONOMIC STATISTICS   |                                  |
| Rooms <sup>I</sup><br>Room Occupancy Rates <sup>I</sup>   | 7,603<br>44.9%                | Land Area ** (square Kilometres)<br>Population (thousand mid year 2003)   | 1,373<br>438.8                   |

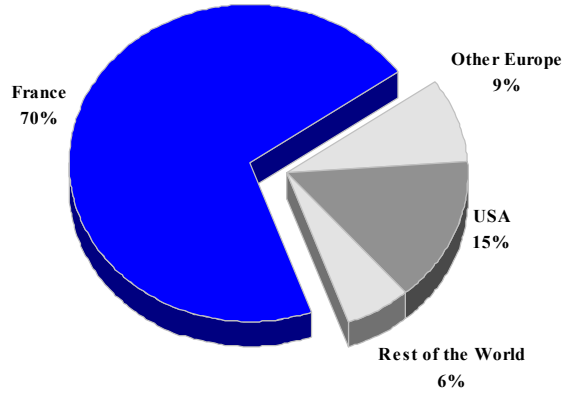
\* Estimated by Office Départemental du Tourisme, Guadeloupe

\*\* Including dependencies

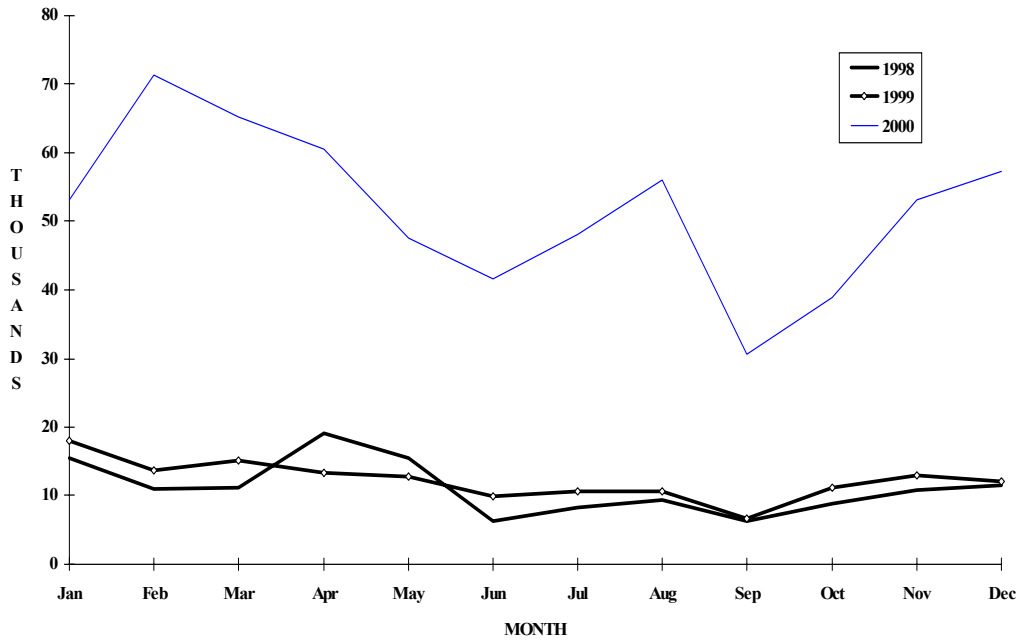
<sup>1</sup> Distribution based on data on hotel registrations

# GUADELOUPE

## TOURIST ARRIVALS BY MAIN MARKETS 2000



### MONTHLY TOURIST ARRIVALS



•The sample in 2000 was different from that of 1999

**GUADELOUPE**

**ESTIMATED TOURIST ARRIVALS**

|              | 1999          | 2000          | 2001          | 2002            | 2003            |
|--------------|---------------|---------------|---------------|-----------------|-----------------|
| Guadeloupe   | 561000        | 602875        | 520000        | n.a             | n.a             |
| Lles Du Nord | n.a           | 204165        | n.a           | n.a             | n.a             |
| <b>TOTAL</b> | <b>711000</b> | <b>807040</b> | <b>773400</b> | <b>° 765700</b> | <b>° 799400</b> |

**TOURIST ARRIVALS AT HOTELS \***

| Country of Residence | 1999          | 2000          | 2001       | 2002       | % Share    |            |
|----------------------|---------------|---------------|------------|------------|------------|------------|
|                      |               |               |            |            | 2003       | 2003       |
| United States        | 5073          | 92474         | n.a        | n.a        | n.a        | n.a        |
| Canada               | 2254          | 10431         | n.a        | n.a        | n.a        | n.a        |
| France               | 124330        | 440779        | n.a        | n.a        | n.a        | n.a        |
| Other Europe         | 12700         | 54606         | n.a        | n.a        | n.a        | n.a        |
| Americas/Caribbean   | 1108          | 22966         | n.a        | n.a        | n.a        | n.a        |
| Rest of World        | 736           | 1878          | n.a        | n.a        | n.a        | n.a        |
| <b>TOTAL</b>         | <b>146201</b> | <b>623134</b> | <b>n.a</b> | <b>n.a</b> | <b>n.a</b> | <b>n.a</b> |

**MONTHLY TOURIST ARRIVALS AT HOTELS**

| Month        | 1999          | *2000         | 2001       | 2002       | % Change   |            |
|--------------|---------------|---------------|------------|------------|------------|------------|
|              |               |               |            |            | 2003       | 2003/02    |
| January      | 17885         | 53164         | n.a        | n.a        | n.a        | n.a        |
| February     | 13655         | 71475         | n.a        | n.a        | n.a        | n.a        |
| March        | 15011         | 65153         | n.a        | n.a        | n.a        | n.a        |
| April        | 13342         | 60494         | n.a        | n.a        | n.a        | n.a        |
| May          | 12727         | 47545         | n.a        | n.a        | n.a        | n.a        |
| June         | 9853          | 41595         | n.a        | n.a        | n.a        | n.a        |
| July         | 10554         | 48006         | n.a        | n.a        | n.a        | n.a        |
| August       | 10554         | 55913         | n.a        | n.a        | n.a        | n.a        |
| September    | 6593          | 30654         | n.a        | n.a        | n.a        | n.a        |
| October      | 11092         | 38848         | n.a        | n.a        | n.a        | n.a        |
| November     | 12994         | 53082         | n.a        | n.a        | n.a        | n.a        |
| December     | 11941         | 57205         | n.a        | n.a        | n.a        | n.a        |
| <b>TOTAL</b> | <b>146201</b> | <b>623134</b> | <b>n.a</b> | <b>n.a</b> | <b>n.a</b> | <b>n.a</b> |

\* The reader is cautioned when using the monthly percentage change since the number of reporting hotels may vary from year to year. This is particularly true for 2000, where the sample changed.

GUADELOUPE

CRUISE PASSENGER ARRIVALS

| Month           | 1999          | 2000          | 2001          | 2002          | % Change      |             |
|-----------------|---------------|---------------|---------------|---------------|---------------|-------------|
|                 |               |               |               |               | 2003          | 2003/02     |
| January         | 34314         | 60532         | n.a           | 40053         | 32643         | -18.5       |
| February        | 38836         | 60723         | n.a           | 42653         | 30881         | -27.6       |
| March           | 36612         | 76010         | n.a           | 51507         | 33812         | -34.4       |
| April           | 33156         | 40464         | n.a           | 25981         | 24790         | -4.6        |
| May             | 18950         | 9609          | n.a           | 0             | 0             | -           |
| June            | 19790         | 10297         | n.a           | 0             | 4255          | -           |
| July            | 18914         | 10142         | n.a           | 5394          | 6164          | 14.3        |
| August          | 13118         | 10175         | n.a           | 0             | 6193          | -           |
| September       | 4646          | 9512          | n.a           | 0             | 4054          | -           |
| October         | 23690         | 15881         | n.a           | 0             | 5305          | -           |
| November        | 23528         | 36916         | n.a           | 11137         | 10414         | -6.5        |
| December        | 27180         | 52057         | n.a           | 28103         | 36591         | 30.2        |
| <b>TOTAL</b>    | <b>292734</b> | <b>392318</b> | <b>361715</b> | <b>204828</b> | <b>195102</b> | <b>-4.7</b> |
| Number of Calls | 203           | 249           | 249           | 240           | 284           |             |

TOURIST ACCOMMODATION (Hotel Rooms Only)

| Area                     | 1999        | 2000        | 2001        | 2002       | 2003        |
|--------------------------|-------------|-------------|-------------|------------|-------------|
| Guadeloupe*              | 4459        | 4504        | n.a         | n.a        | 4159        |
| Les Saintes              | 80          | 85          | n.a         | n.a        | 83          |
| Saint Barthelemy         | 571         | 576         | n.a         | n.a        | 567         |
| Saint Martin             | 2979        | 2801        | n.a         | n.a        | 2623        |
| Marie Galante & Desirade | 171         | 170         | n.a         | n.a        | 171         |
| <b>TOTAL</b>             | <b>8260</b> | <b>8136</b> | <b>8019</b> | <b>n.a</b> | <b>7603</b> |

\* Grand Terre and Basse Terre

Source: Office Departemental du Tourisme de la Guadeloupe