

PUERTO RICO

TOURISM HIGHLIGHTS FOR 2006

VISITOR ARRIVALS			
Tourist Arrivals ^e ('000) → ↳ <i>Summer</i> * ↳ <i>Winter</i> *	1,484,132 60.1% 39.9%	Cruise Passengers ↳ <i>Summer</i> ↳ <i>Winter</i> Cruise Calls	1,338,019 54.7% 45.3% 562
ACCOMMODATION STATISTICS		VISITOR PROFILE	
Hotel Registrations Rooms ^{III} Room Occupancy Rates	1,411,905 12,753 68.5%	Average Length of Stay (<i>nights</i>) Tourist Arrivals by Place of Stay ↳ <i>Hotels & Guest House</i> ↳ <i>Private/Unregistered/Other</i>	2.5 36.9% 63.1%
TOURISM AND OTHER RELATED SOCIO-ECONOMIC STATISTICS			
Total Expenditure (<i>US\$ millions</i>) Hotel & Restaurant contribution to GDP Consumer Price Index (<i>% ch. 2004/'03</i>)	\$3,024.1 0.9% 11.9%	Tourism Budget (<i>US\$ '000's</i>) ^F GDP at Factor Cost (<i>US\$ millions</i>) Land Area (<i>square Kilometres</i>) Population (<i>thousand mid year 2004</i>)	\$88,023 \$78,362.4 8,874.7 3,895.0

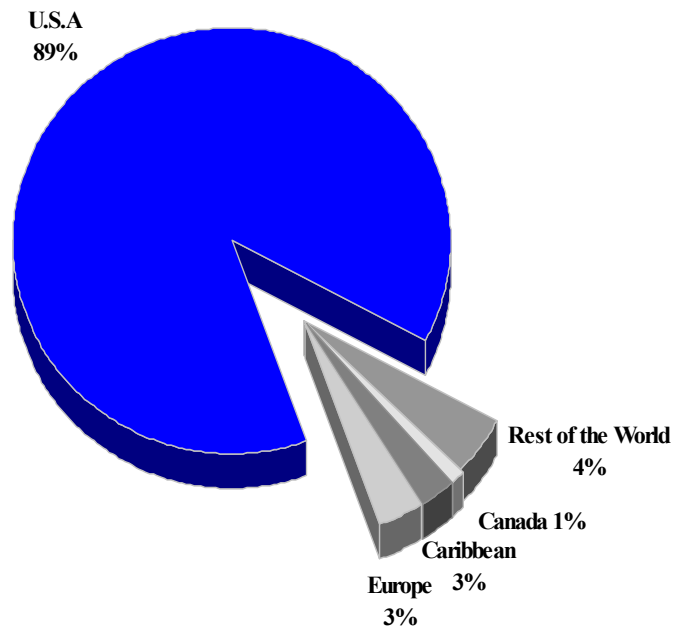
^F - fiscal estimate July 2003 - June 2004

* Seasonal distribution based on reported hotel registrations of non-residents only.

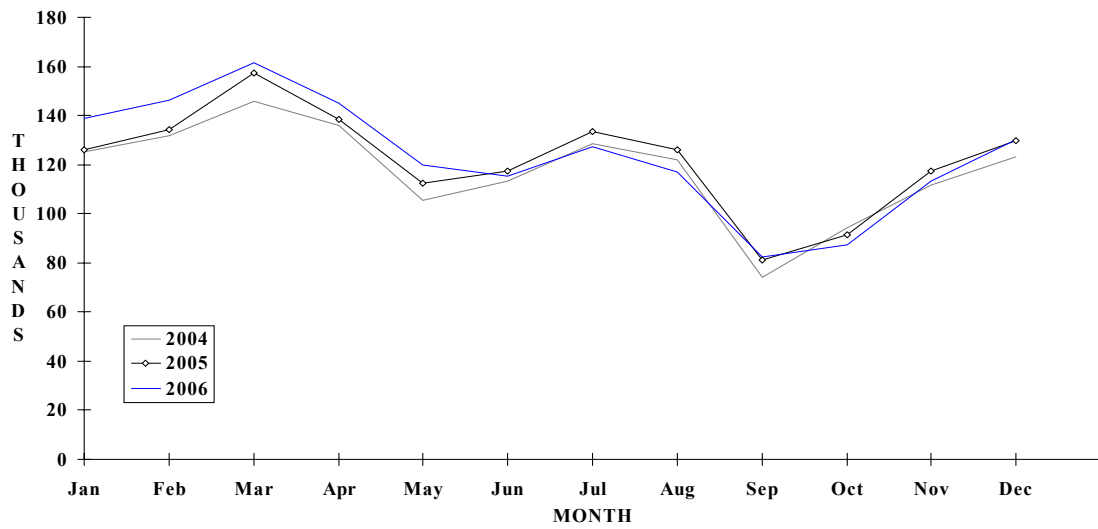
PUERTO RICO

HOTEL REGISTRATIONS BY MAIN MARKETS

2006



MONTHLY HOTEL REGISTRATIONS



VISITOR ARRIVALS BY CATEGORY (FISCAL YEAR - JULY TO JUNE)

	2002	2003	2004	2005	2006
Total Tourist	3087.1	3238.4	3541.0		
Same Day Arrivals	1277.0	1163.9	1348.2		
Total	4364.1	4402.3	4889.2	0.0	0.0

Source: The Puerto Rico Planning Board

**NON-RESIDENT HOTEL REGISTRATIONS* BY MAIN COUNTRY OF RESIDENCE
(Calendar Years)**

Country of Residence	2002	2003	2004	2005	2006	% Share 2006
United States	1108249	1148426	1230448	1282369	1312750	88.5
Canada	12230	13285	20882	18708	17174	1.2
Europe	28866	29607	36975	39337	41330	2.8
Caribbean	40794	46429	51935	51076	48105	3.2
Other Countries**	90011	84494	71599	73802	64773	4.4
TOTAL	1280150	1322241	1411839	1465292	1484132	100.0

** Includes hotels which did not report the origin of guests

MONTHLY HOTEL REGISTRATIONS * BY NON-RESIDENTS

Month	2002	2003	2004	2005	2006	% Change 2006/05
January	105638	122481	125354	126046	138906	10.2
February	113371	124007	131859	134437	146106	8.7
March	132651	136126	145920	157340	161639	2.7
April	124715	120742	136118	138402	145024	4.8
May	106764	101745	105419	112590	119695	6.3
June	101757	104255	113448	117472	115533	-1.7
July	109026	113994	128527	133565	127428	-4.6
August	108590	115075	121761	125841	117030	-7.0
September	73726	69882	74248	81177	82175	1.2
October	87838	90699	94348	91317	87299	-4.4
November	105703	107069	111505	117281	113128	-3.5
December	110371	116166	123332	129824	130169	0.3
TOTAL	1280150	1322241	1411839	1465292	1484132	1.3

* Reporting hotels only; Includes Paradores (County Inns) but excludes condominiums; also excludes airline crew members

CRUISE PASSENGER ARRIVALS

Month	2002					2006	
	2002	2003	2004	2005	2006	% Change 2006/05	
January	160021	120898	156025	175933	157538	-10.5	
February	141684	124298	153497	152035	144040	-5.3	
March	151647	144815	159024	156813	143550	-8.5	
April	117476	126909	132145	139447	160742	15.3	
May	56742	63159	88686	82733	73019	-11.7	
June	67576	75093	78966	57250	69566	21.5	
July	71232	67761	73078	68972	85718	24.3	
August	60940	73264	79358	60718	75528	24.4	
September	51075	62384	58417	52303	63200	20.8	
October	77302	80337	94951	100775	78796	-21.8	
November	101750	143142	150480	116647	119470	2.4	
December	146466	152932	165716	151453	166852	10.2	
TOTAL	1203911	1234992	1390343	1315079	1338019	1.7	

Other Cruise Statistics

	Fiscal Year*					
	2000/01	2001/02	2002/03	2003/04	2004/05	2005/06
Total Passengers*	1356619	1276301	1164199	1348163	1386211	
Cruise Ship calls	680	625	588	639	575	562

TOURIST ACCOMMODATION (Rooms)**

Type of Accommodation	CALENDAR YEAR				
	2002	2003	2004	2005	2006
Hotels	10157	10195	10363	9771	
Guest Houses	505	497	540	544	
Paradores	1061	1081	n.a	882	
Other	1098	1098	1013	2425	
TOTAL	12821	12871	11916	13622	0

* Fiscal year (July to June)

** Hotels endorsed by Puerto Rico Tourism Company only; as at end June

Source: Commonwealth of Puerto Rico Tourism Company.

TOURISM HIGHLIGHTS FOR 2006

VISITOR ARRIVALS			
Tourist Arrivals ➔	11,012	Same Day Visitors	11,941
➔ <i>Summer</i>	59.5%		
➔ <i>Winter</i>	40.5%		
ACCOMMODATION STATISTICS		SOCIO-ECONOMIC STATISTICS	
Rooms ⁱⁱ	n.a	Tourism Budget (US\$ '000) ^{vi}	\$274
		Land Area (square Kilometres)	13
		Population (thousand mid year 2002)	1.4