

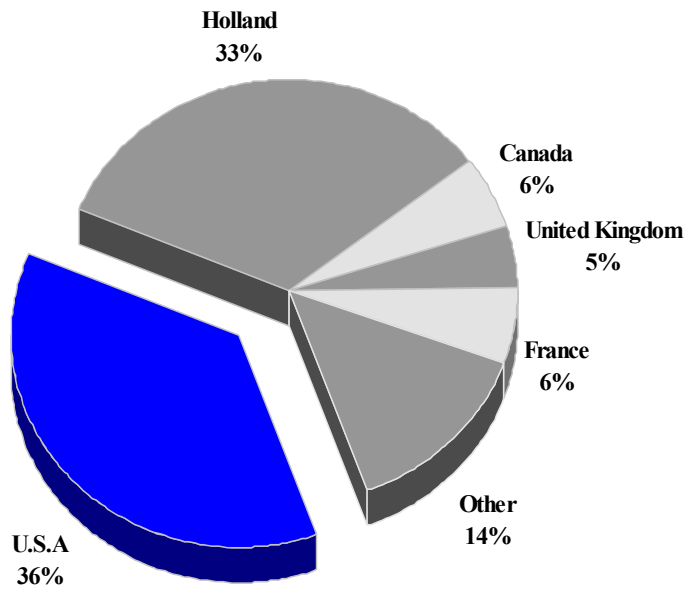
TOURISM HIGHLIGHTS FOR 2006

VISITOR ARRIVALS			
Tourist Arrivals ➔	11,012	Same Day Visitors	11,941
➔ <i>Summer</i>	59.5%		
➔ <i>Winter</i>	40.5%		
ACCOMMODATION STATISTICS		SOCIO-ECONOMIC STATISTICS	
Rooms ⁱⁱ	n.a	Tourism Budget (US\$ '000) ^{vi}	\$274
		Land Area (square Kilometres)	13
		Population (thousand mid year 2002)	1.4

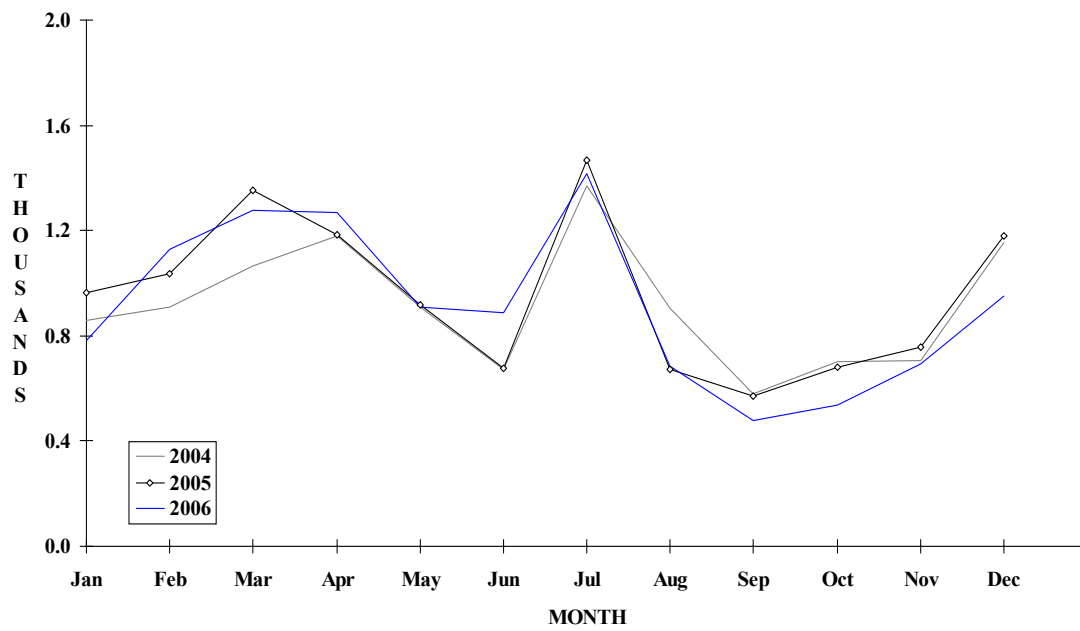
SABA

TOURIST ARRIVALS BY MAIN MARKETS

2006



MONTHLY TOURIST ARRIVALS



VISITOR ARRIVALS BY CATEGORY

Category	2002	2003	2004	2005	% Share	
					2006	2006
Air Arrival Tourists	7921	6790	7291	7350	6838	29.9
Same-day visitors*	10718	11113	12149	13414	11941	52.2
Sea Tourists	2857	3471	3721	4122	4104	17.9
TOTAL	21496	21374	23161	24886	22883	100.0

* Mainly day trippers from St Maarten

TOURIST ARRIVALS BY COUNTRY OF RESIDENCE

Country of Residence *	2002	2003	2004	2005	% Share	
					2006	2006
Holland/Antilles	3233	3245	3320	3703	3614	32.8
United States	3741	3656	4172	4288	4079	37.0
Canada	639	450	592	645	633	5.7
United Kingdom	479	591	555	606	514	4.7
France	573	551	753	788	648	5.9
Other Countries	2113	1768	1620	1432	1524	13.8
TOTAL	10778	10261	11012	11462	11012	100.0

* Nationality is used as a proxy

MONTHLY TOURIST ARRIVALS

Month	2002	2003	2004	2005	% Change	
					2006	2006/05
January	737	844	857	962	783	-18.6
February	733	904	908	1035	1130	9.2
March	843	923	1065	1355	1275	-5.9
April	710	818	1179	1186	1268	6.9
May	787	939	911	918	911	-0.8
June	763	826	671	678	887	30.8
July	1385	1162	1369	1468	1415	-3.6
August	1302	968	906	672	683	1.6
September	730	424	581	570	478	-16.1
October	890	620	704	680	536	-21.2
November	803	761	707	758	694	-8.4
December	1095	1072	1154	1180	952	-19.3
TOTAL	10778	10261	11012	11462	11012	-3.9

**Includes other visitors*

TOURIST ACCOMMODATION (Rooms)

Rooms	2001	2002	2003	2004	2005
	85	n.a	n.a	n.a	n.a

Source: Saba Tourist Bureau