

ST. EUSTATIUS

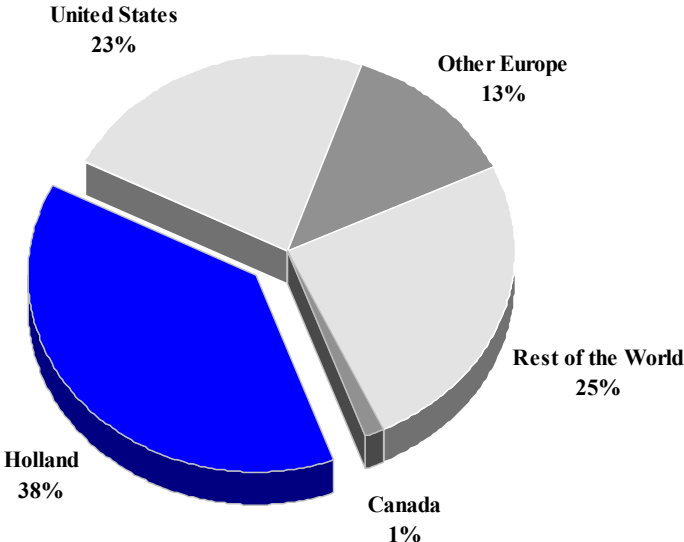
TOURISM HIGHLIGHTS FOR 2006

VISITOR ARRIVALS			
Tourist Arrivals ✈ ➡ <i>Summer</i> * ➡ <i>Winter</i> *	19,320 66.6% 33.4%	Sea Arrivals ➡ <i>Summer</i> ➡ <i>Winter</i> Yacht Arrivals	18,253 60.2% 39.8% 707
ACCOMMODATION STATISTICS		SOCIO-ECONOMIC STATISTICS	
Rooms ^V	62	Land Area (<i>square Kilometres</i>) Population (<i>thousand mid year 2004</i>)	21 2.5

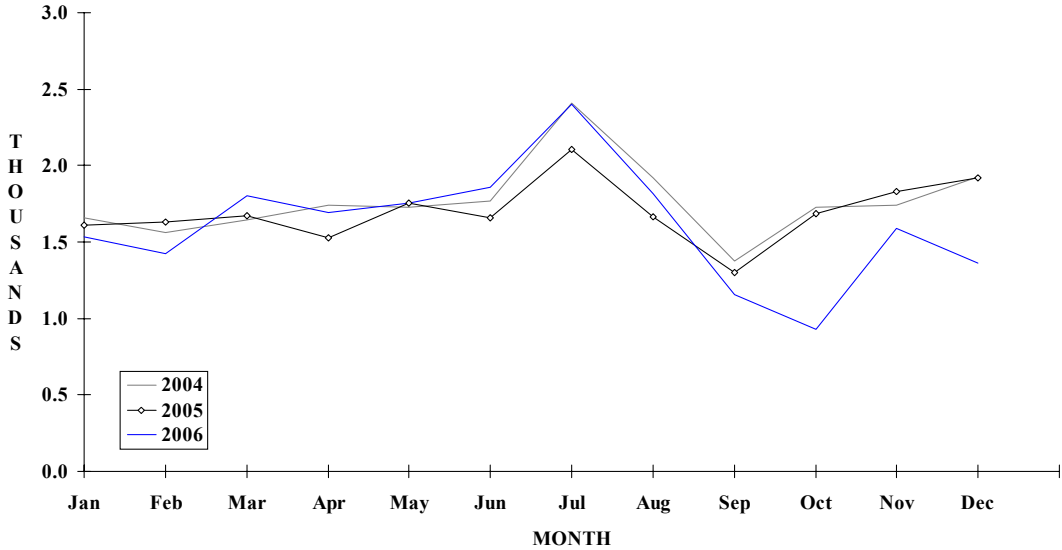
* Based on Total Air Arrivals

ST EUSTATIUS

**TOURIST ARRIVALS BY MAIN MARKETS
2006**



MONTHLY VISITOR ARRIVALS



* Total Visitor Arrivals includes Antilleans

ST EUSTATIUS

VISITOR AIR ARRIVALS BY NATIONALITY*

Nationality	2002	2003	2004	2005	% Share	
					2006	2006
United States	2371	2378	2463	2309	2206	23.0
Canada	192	184	211	194	138	1.4
Holland	3305	3930	4009	3904	3630	37.9
Other Europe	1295	1337	1516	1496	1222	12.7
Rest of the World	2618	2617	2877	2452	2389	24.9
TOTAL TOURISTS	9781	10446	11076	10355	9585	100.0
Antillean **	9771	9795	10121	10001	9735	
TOTAL AIR VISITORS	19552	20241	21197	20356	19320	

*Includes same-day visitors and returning residents

**Includes residents of St Eustatius

MONTHLY VISITOR AIR ARRIVALS

Month	2002	2003	2004	2005	% Change	
					2006	2006/05
January	1279	1565	1659	1609	1536	-4.5
February	1286	1440	1560	1628	1422	-12.7
March	1652	1513	1645	1672	1803	7.8
April	1418	1502	1740	1527	1693	10.9
May	1700	1746	1729	1756	1756	0.0
June	1540	1887	1770	1655	1855	12.1
July	2366	2263	2410	2106	2401	14.0
August	1838	1563	1917	1667	1817	9.0
September	1308	1417	1374	1302	1154	-11.4
October	1590	1709	1728	1688	927	-45.1
November	1613	1656	1738	1829	1592	-13.0
December	1962	1985	1927	1917	1364	-28.8
TOTAL	19552	20246	21197	20356	19320	-5.1

ST EUSTATIUS

MONTHLY VISITOR SEA ARRIVALS

Month	2002	2003	2004	2005	2006	% Change 2006/05
January	579	680	553	56	1827	3162.5
February	357	1269	726	1058	1652	56.1
March	1054	948	894	1414	1817	28.5
April	813	345	744	756	1962	159.5
May	494	239	491	771	1899	146.3
June	330	342	268	526	1326	152.1
July	532	79	354	652	1685	158.4
August	310	200	334	867	1013	16.8
September	269	221	115	790	1157	46.5
October	119	247	134	863	891	3.2
November	543	272	409	987	1145	16.0
December	936	506	1095	1142	1879	64.5
TOTAL	6336	5348	6117	9882	18253	84.7
Yacht Arrivals	749	663	610	708		

TOURIST ACCOMMODATION (Rooms)

Rooms	2002	2003	2004	2005	2006
Total	n.a	n.a	n.a	n.a	n.a

Source: St. Eustatius Development Foundation