

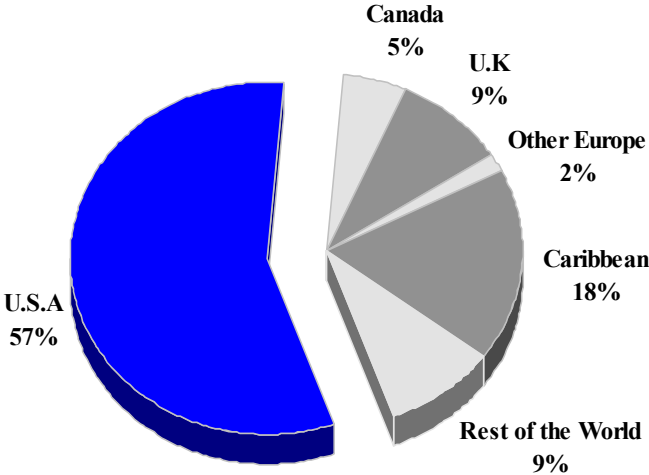
ST KITTS AND NEVIS

TOURISM HIGHLIGHTS FOR 2004

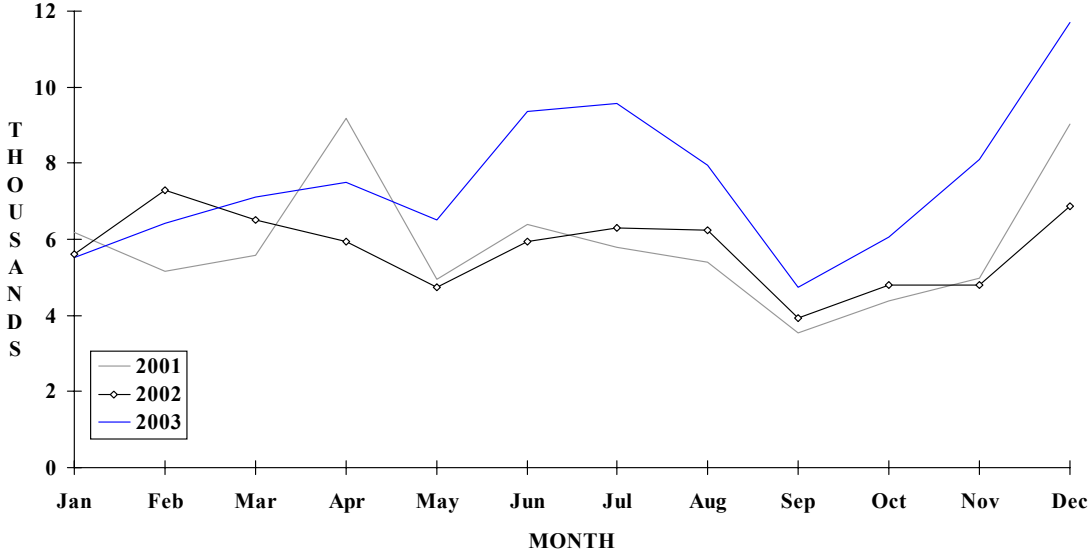
VISITOR ARRIVALS			
Tourist Arrivals ➔	91,769	Cruise Passengers ^I	150,429
➔ <i>Summer</i>	n.a	➔ <i>Summer</i>	52.2%
➔ <i>Winter</i>	n.a	➔ <i>Winter</i>	47.8%
		Cruise Ship Calls ^I	281
VISITOR PROFILE			
Average Length of Stay (<i>nights</i>) ^{III}	9.6	Tourist Arrivals by Place of Stay^{III}	
Tourist Arrivals by Purpose of Visit^{III}		➔ <i>Hotels</i>	49.9%
➔ <i>Holiday</i>	89.8%	➔ <i>Apartment/Villas</i>	4.3%
➔ <i>Business</i>	9.6%	➔ <i>Private</i>	40.9%
➔ <i>Other</i>	0.6%	➔ <i>Other</i>	4.9%
TOURISM AND OTHER RELATED ECONOMIC STATISTICS			
Total Expenditure (<i>US\$ millions</i>)	\$106.9	GDP at Factor Cost (<i>US\$millions</i>)	\$326.8
Tourism Budget (<i>US\$ 000</i>) ^{IV b}	\$3,238	Consumer Price Index (<i>%ch. 2004/'03</i>)	2.3%
Hotel and Restaurant contribution to GDP	8.5%		
ACCOMMODATION STATISTICS		SOCIO-ECONOMIC STATISTICS	
Rooms ^V	1,754	Land Area (<i>square Kilometres</i>)	269
		Population (<i>thousand mid year 2004</i>)	47.9

ST. KITTS & NEVIS

TOURIST ARRIVALS BY MAIN MARKETS 2004



MONTHLY TOURIST ARRIVALS



ST KITTS AND NEVIS

TOURIST ARRIVALS BY COUNTRY OF RESIDENCE

Country of Residence	2000	2001	2002	2003	% Share	
					2004	2004
United States	23474	25558	27525	34962	52341	57.0
Canada	5395	5237	4352	3979	4688	5.1
United Kingdom	12841	8726	5464	6776	8502	9.3
Other Europe	1543	1730	n.a	1244	1563	1.7
OECS	6244	7294	n.a	9852	10595	11.5
Other CARICOM	5441	4569	n.a	2395	2993	3.3
U.S. Virgin Islands	5862	5509	n.a	n.a	n.a	-
Netherlands Antilles	3721	3592	n.a	2370	2622	2.9
Rest of World	8628	8350	30190	7382	8465	9.2
TOTAL	73149	70565	67531	68960	91769	100.0

MONTHLY TOURIST ARRIVALS

Month	2000	2001	2002	*2003	%Change	
					2004	2004/03
January	6463	6173	5611	5526	n.a	-100.0
February	6778	5150	7287	6408	n.a	-100.0
March	6434	5582	6521	7115	n.a	-100.0
April	5252	9182	5952	7492	n.a	-100.0
May	4170	4960	4744	6515	n.a	-100.0
June	4805	6385	5938	9373	n.a	-100.0
July	6607	5791	6299	9569	n.a	-100.0
August	8717	5409	6250	7944	n.a	-100.0
September	3496	3542	3935	4743	n.a	-100.0
October	4693	4399	4790	6073	n.a	-100.0
November	6384	4985	4809	8103	n.a	-100.0
December	9350	9007	6862	11702	n.a	-100.0
TOTAL	73149	70565	68998	90563	n.a	-100.0

* include same-day visitors

