

## ST. MAARTEN

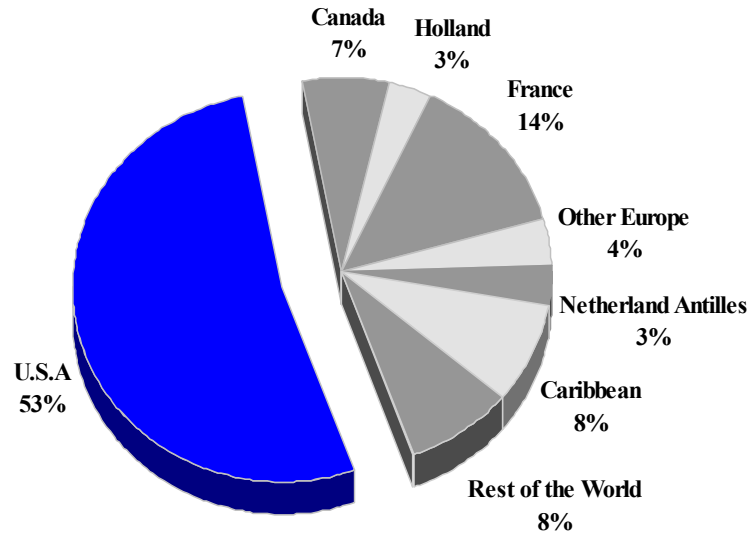
### TOURISM HIGHLIGHTS FOR 2006

VISITOR ARRIVALS			
Tourist Arrivals ✈	467,804	Cruise Passengers	1,421,645
➡ <i>Summer</i>	59.2%	➡ <i>Summer</i>	54.5%
➡ <i>Winter</i>	40.8%	➡ <i>Winter</i>	45.5%
Average Length of Stay ( <i>nights</i> )	n.a.	Cruise Ship Calls	666
TOURISM AND OTHER RELATED ECONOMIC STATISTICS			
Total Expenditure ( <i>US\$ millions</i> ) *	\$612.8	Consumer Price Index ( <i>%ch 2004/'03</i> )	2.1%
Tourism Budget ( <i>US\$ thousands</i> ) <sup>b</sup>	\$5,003		
ACCOMMODATION STATISTICS		SOCIO-ECONOMIC STATISTICS	
Rooms <sup>II</sup>	3,532	Land Area ( <i>square Kilometres</i> )	34
Room Occupancy Rates	59.3%	Population ( <i>thousand mid year 2004</i> )	33.2

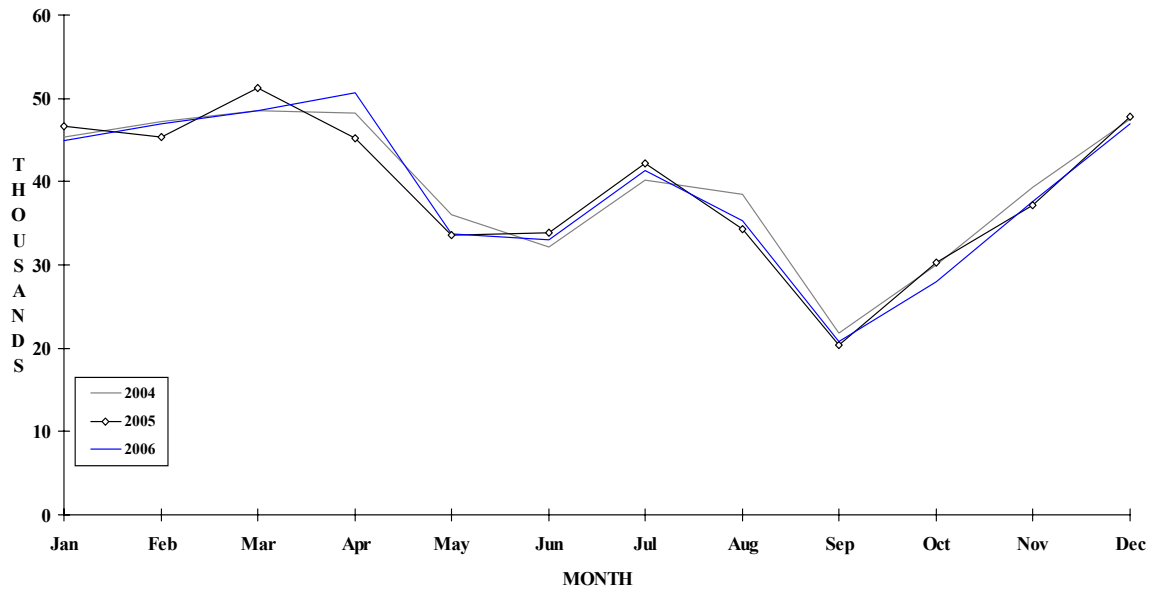
\* Includes Visitor Expenditure for Saba and St. Eustatius

# ST. MAARTEN

## TOURIST ARRIVALS BY MAIN MARKETS 2006



## MONTHLY TOURIST ARRIVALS



## TOURIST ARRIVALS BY NATIONALITY\*

Nationality	2002	2003	2004	2005	2006	% Share 2006
United States	191908	222247	251156	246858	246064	52.6
Canada	23460	29545	31667	34506	30646	6.6
Holland	9187	12918	15554	15441	15842	3.4
France**	62457	58801	62109	60524	63475	13.6
Other Europe	15503	16540	18740	17856	17741	3.8
Neth. Antilles	13475	14742	15505	16650	15746	3.4
Other Caribbean	33371	39913	44906	40426	39034	8.3
Rest of World	31440	32881	35394	35600	39256	8.4
<b>TOTAL</b>	<b>380801</b>	<b>427587</b>	<b>475031</b>	<b>467861</b>	<b>467804</b>	<b>100.0</b>

\*By air, including persons destined for St Martin (the French side of the island); Excludes inter-Antillean arrivals

\*\*Includes citizens of the French West Indies.

## MONTHLY TOURIST ARRIVALS\*

Month	2002	2003	2004	2005	2006	% Change 2006/05
January	34247	39441	45348	46632	44945	-3.6
February	35012	38927	47277	45338	46890	3.4
March	42535	40297	48575	51264	48515	-5.4
April	37382	40344	48248	45246	50643	11.9
May	25734	31833	36054	33578	33782	0.6
June	29789	30845	32197	33816	32962	-2.5
July	31040	36133	40203	42150	41273	-2.1
August	31986	36380	38499	34245	35311	3.1
September	19330	19613	21757	20387	20885	2.4
October	25809	29445	30009	30309	28056	-7.4
November	32111	38194	39293	37150	37550	1.1
December	35826	46135	47571	47746	46992	-1.6
<b>TOTAL</b>	<b>380801</b>	<b>427587</b>	<b>475031</b>	<b>467861</b>	<b>467804</b>	<b>0.0</b>

\*Arrivals at Juliana Airport (includes visitors destined for St Martin)

## CRUISE PASSENGER ARRIVALS

Month	2002	2003	2004	2005	2006	% Change 2006/05
January	118939	134540	147680	178231	165773	-7.0
February	101410	117452	141009	164100	157220	-4.2
March	112664	121033	158411	182012	176707	-2.9
April	91992	122066	133212	150387	146473	-2.6
May	54643	60364	75237	79501	89624	12.7
June	59847	52064	87210	77829	69248	-11.0
July	73250	65496	80113	74366	66864	-10.1
August	69138	62565	61555	69554	74942	7.7
September	57617	50126	40933	63183	63630	0.7
October	78457	70740	81510	116473	82239	-29.4
November	105529	142956	154391	172452	158110	-8.3
December	131554	172332	187189	160373	170815	6.5
<b>TOTAL</b>	<b>1055040</b>	<b>1171734</b>	<b>1348450</b>	<b>1488461</b>	<b>1421645</b>	<b>-4.5</b>

<b>Number of Calls</b>	507	531	597	666	641
------------------------	-----	-----	-----	-----	-----

## TOURIST ACCOMMODATION (Rooms)

Type of Accommodation	2002	2003	2004	2005	2006
Hotels	n.a	n.a	n.a	n.a	
Guest Houses	n.a	n.a	n.a	n.a	
Villas/Condos/Apartments	n.a	n.a	n.a	n.a	
Other	n.a	n.a	n.a	n.a	
<b>Total</b>	<b>3548</b>	<b>3532</b>	<b>n.a</b>	<b>n.a</b>	

*Note: The number of rooms in French St Martin was 2903 in 1995 (See Guadeloupe)*  
*Source: St. Maarten Tourist Bureau*