

ST. EUSTATIUS

Visitor Arrival Summary

Tourist Arrivals (excluding Antilleans) to St. Eustatius increased by 2.5 percent to reach a total of 12.0 thousand in 2009.

- ◆ Holland continues to be the most important single market for St. Eustatius (accounting for 43.8 percent all tourist arrivals). There was a 6.5 percent increase from this market. Of the major markets, the other European countries excluding Holland grew by 10.5 percent while the United States decreased by 4.7 percent. Fewer Canadians made the trip to this destination and the miscellaneous unspecified countries showed no appreciable movement.
- ◆ Sea Arrivals for 2008 and 2009 are unavailable.

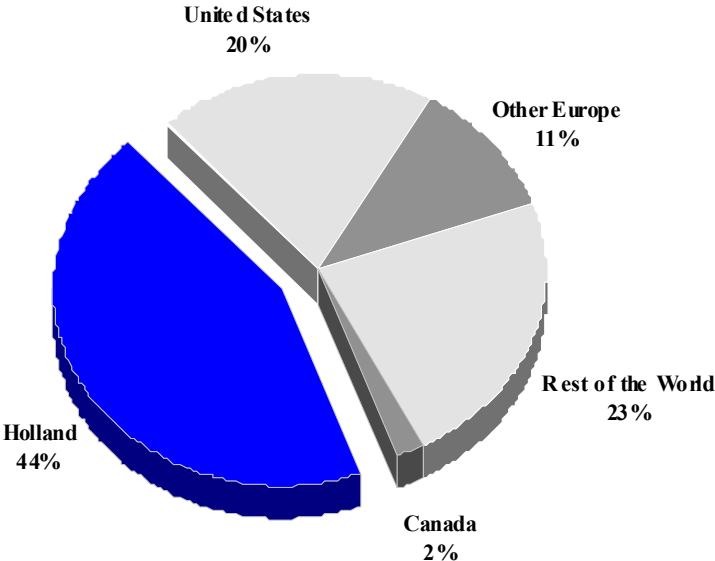
TOURISM HIGHLIGHTS FOR 2009

VISITOR ARRIVALS			
Tourist Arrivals ➔ ➔ <i>Summer</i> * ➔ <i>Winter</i> *	12,049 67.5% 32.5%	Sea Arrivals ^{II} ➔ <i>Summer</i> ➔ <i>Winter</i> Yacht Arrivals ^I	5,858 48.5% 51.5% 707
ACCOMMODATION STATISTICS		SOCIO-ECONOMIC STATISTICS	
Rooms ^{XI}	62	Land Area (<i>square Kilometres</i>) Population (<i>thousand mid year 2009</i>)	21 2.7

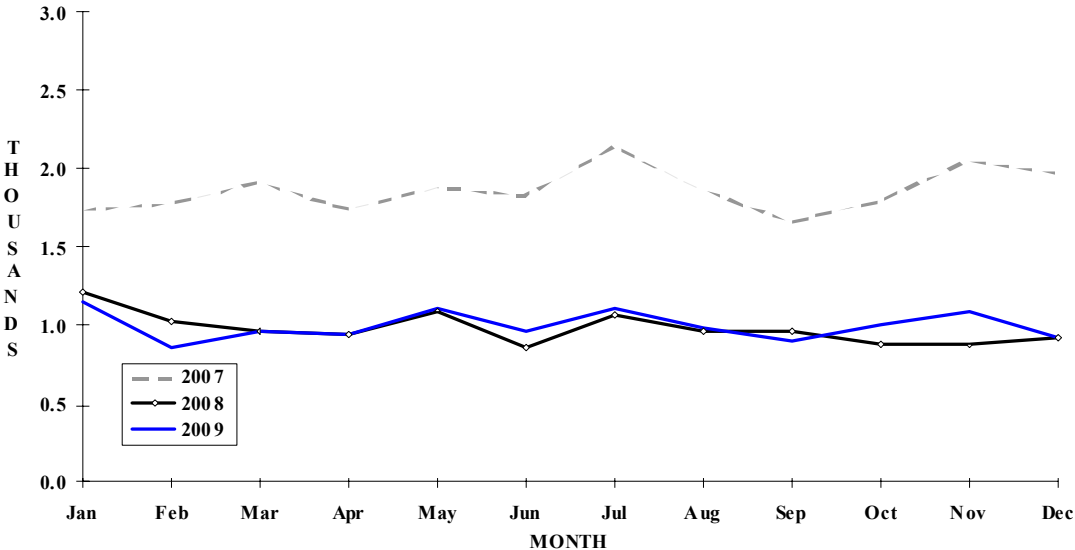
* Based on Total Air Arrivals

ST EUSTATIUS

**TOURIST ARRIVALS BY MAIN MARKETS
2009**



MONTHLY VISITOR ARRIVALS



* Total Visitor Arrivals includes Antilleans

ST EUSTATIUS

VISITOR AIR ARRIVALS BY NATIONALITY*

Nationality	2005	2006	2007	2008	% Share	
					2009	2009
United States	2309	2206	2738	2513	2394	19.9
Canada	194	138	229	253	236	2.0
Holland	3904	3630	4594	4953	5273	43.8
Other Europe	1496	1222	1299	1248	1379	11.4
Rest of the World	2452	2389	2708	2791	2767	23.0
TOTAL TOURISTS	10355	9585	11568	11758	12049	100.0
Antillean **	10001	9735	10784	10724	10547	
TOTAL AIR VISITORS	20356	19320	22352	22482	22596	

*Includes same-day visitors and returning residents

**Includes residents of St Eustatius

MONTHLY VISITOR AIR ARRIVALS

Month	2005	2006	2007	2008	% Change	
					2009	2009/08
January	1609	1536	1736	1212	1154	-4.8
February	1628	1422	1776	1023	862	-15.7
March	1672	1803	1912	959	959	0.0
April	1527	1693	1743	940	940	0.0
May	1756	1756	1879	1098	1124	2.4
June	1655	1855	1827	854	963	12.8
July	2106	2401	2133	1060	1121	5.8
August	1667	1817	1864	964	987	2.4
September	1302	1154	1659	963	912	-5.3
October	1688	927	1800	880	997	13.3
November	1829	1592	2049	873	1103	26.3
December	1917	1364	1974	932	927	-0.5
TOTAL	20356	19320	22352	11758	12049	2.5

ST EUSTATIUS

MONTHLY VISITOR SEA ARRIVALS

Month	2003	2004	2005	2006	2007	% Change 2007/06
January	680	553	56	1827	911	-50.1
February	1269	726	1058	1652	898	-45.6
March	948	894	1414	1817	578	-68.2
April	345	744	756	1962	631	-67.8
May	239	491	771	1899	474	-75.0
June	342	268	526	1326	598	-54.9
July	79	354	652	1685	505	-70.0
August	200	334	867	1013	253	-75.0
September	221	115	790	1157	161	-86.1
October	247	134	863	891	115	-87.1
November	272	409	987	1145	344	-70.0
December	506	1095	1142	1879	390	-79.2
TOTAL	5348	6117	9882	18253	5858	-67.9
Yacht Arrivals	610	708	778	708	708	

TOURIST ACCOMMODATION (Rooms)

Rooms	2003	2004	2005	2006	2007
Total	n.a	n.a	n.a	n.a	n.a

Source: St. Eustatius Development Foundation

ST KITTS AND NEVIS

Visitor Arrival Summary

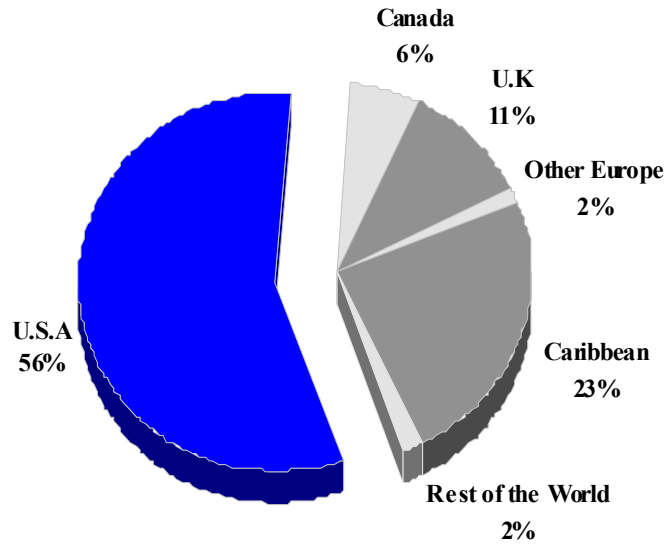
Stay over arrivals to St. Kitts and Nevis Lucia for 2009, are unavailable.

TOURISM HIGHLIGHTS FOR 2008

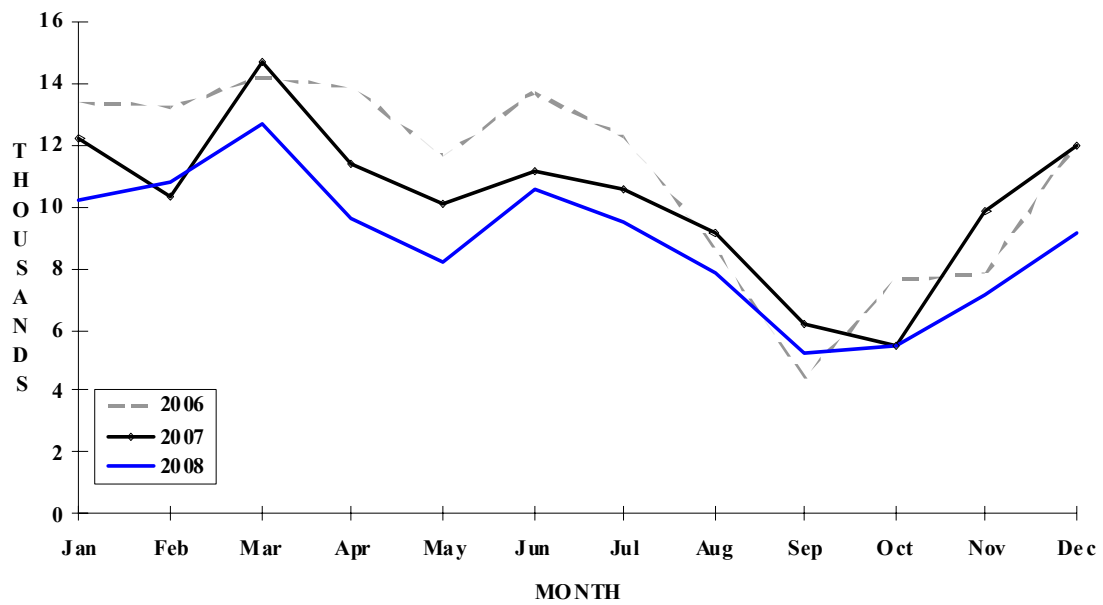
VISITOR ARRIVALS			
Tourist Arrivals ➔	106,408	Cruise Passengers ^I	247,393
➔ <i>Summer</i>	60.4	➔ <i>Summer</i>	47.0%
➔ <i>Winter</i>	39.4	➔ <i>Winter</i>	53.0%
		Cruise Ship Calls ^I	242
VISITOR PROFILE			
Average Length of Stay (<i>nights</i>) ^{VII}	9.6	Tourist Arrivals by Place of Stay ^{VII}	
Tourist Arrivals by Purpose of Visit ^{VIII}		➔ <i>Hotels</i>	49.9%
➔ <i>Holiday</i>	89.8%	➔ <i>Apartment/Villas</i>	4.3%
➔ <i>Business</i>	9.6%	➔ <i>Private</i>	40.9%
➔ <i>Other</i>	0.6%	➔ <i>Other</i>	4.9%
TOURISM AND OTHER RELATED ECONOMIC STATISTICS			
Total Expenditure (<i>US\$ millions</i>) ^I	\$126.1	GDP at Factor Cost (<i>US\$millions</i>)	\$468.0
Tourism Budget (<i>US\$ 000</i>) ^{IXb}	\$3,238	Consumer Price Index (<i>%ch. 2008/'07</i>)	5.4%
Hotel and Restaurant contribution to GDP ^I	10.3%		
ACCOMMODATION STATISTICS		SOCIO-ECONOMIC STATISTICS	
Rooms ^X	1,754	Land Area (<i>square Kilometres</i>)	269
		Population (<i>thousand mid year 2008</i>)	51.3

ST. KITTS & NEVIS

TOURIST ARRIVALS BY MAIN MARKETS 2007



MONTHLY TOURIST ARRIVALS



ST KITTS AND NEVIS

TOURIST ARRIVALS BY COUNTRY OF RESIDENCE

Country of Residence	2004	2005	2006	2007	% Share	
					2008	2008
United States	64859	77300	78800	68586	n.a	n.a
Canada	6325	9052	7555	7076	n.a	n.a
United Kingdom	11004	9541	9890	12791	n.a	n.a
Other Europe	2177	2068	2140	1832	n.a	n.a
OECS						
Other CARICOM	31909	24961	32605	28885	n.a	n.a
U.S. Virgin Islands						
Netherlands Antilles						
Rest of World	1364	4005	1980	1952	n.a	n.a
TOTAL	117638	126927	132970	121122	n.a	n.a

MONTHLY TOURIST ARRIVALS

Month	2004	2005	2006	2007	%Change	
					2008	2008/07
January	10080	13079	13417	12296	10255	-16.6
February	13093	13528	13224	10326	10801	4.6
March	12385	12904	14216	14710	12686	-13.8
April	12941	13201	13874	11433	9623	-6.5
May	9624	10506	11629	10134	8216	-18.9
June	11809	11309	13705	11162	10556	-5.4
July	11972	12953	12275	10554	9492	-10.1
August	6842	8716	8678	9120	7840	-14.0
September	3856	4255	4414	6189	5261	-15.0
October	7202	7348	7582	5433	5422	-0.2
November	7019	7514	7850	9849	7112	-27.8
December	10815	11614	12106	11955	9144	-23.5
TOTAL	117638	126927	132970	123161	106408	-13.6

SAINT LUCIA

Visitor Arrival Summary

Saint Lucia registered a 5.8 percent decrease in Tourist Arrivals in 2010. Sharp declines were recorded during the first half of the year and at the end of the winter period tourist arrivals had dropped by 8.8 percent when compared to the same period of 2008. Only in the last quarter did arrivals move above those of 2008 but this was not sufficient to compensate for earlier decreases. As a consequence, the summer period finishes 4.1 percent below 2008 and total arrivals for the year numbered 278.5 thousand.

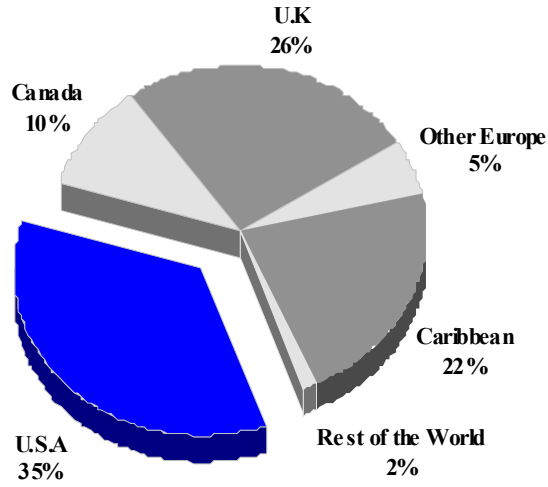
- ◆ The key markets (United States and United Kingdom) for this destination had worse performances in 2009 than in 2008. Tourist arrivals from the United States, the largest market, (35.4 percent) decreased by 9.1 percent, while those from the UK market, (25.8 percent of total) slumped by 14.1 percent. All other markets improved upon the 2008 performance in 2009. Of the markets which surpassed their 2008 totals, Canada had a modest performance being up by 8.7 percent, and Other Europe, increasing by 13.6 percent. The Caribbean grew only marginally by less than one percent.
- ◆ Cruise Passenger arrivals totalled 699.3 thousand in 2009. This represented an increase for 12.8 percent, with arrivals in each month, except January and June, exceeding the 2008 level. 82 more cruise ship calls were made in 2009.

TOURISM HIGHLIGHTS FOR 2009

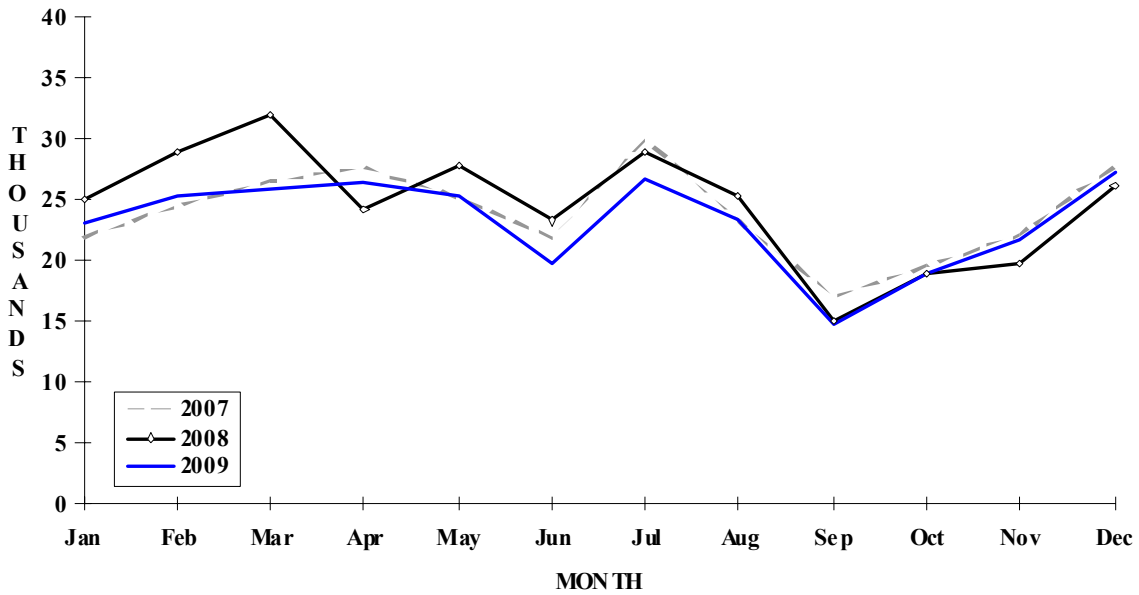
VISITOR ARRIVALS			
Tourist Arrivals ➔	278,491	Cruise Passengers	699,306
➔ <i>Summer</i>	63.9%	➔ <i>Summer</i>	48.6%
➔ <i>Winter</i>	36.1%	➔ <i>Winter</i>	51.4%
Same-day Visitors ^{II}	4,967	Cruise Ship Calls	397
VISITOR PROFILE			
Average Length of Stay (nights) ^I	8.9	Tourist Arrivals by Place of Stay ^{IV}	
Tourist Arrivals by Purpose of Visit ^{II}		➔ <i>Hotels</i>	70.3%
➔ <i>Holiday</i>	84.7%	➔ <i>Guest Houses/Apartments</i>	1.7%
➔ <i>Business</i>	3.7%	➔ <i>Private</i>	10.4%
➔ <i>Other</i>	11.6%	➔ <i>Other</i>	17.6%
TOURISM AND OTHER RELATED ECONOMIC STATISTICS			
Total Expenditure (US\$ millions) ^I	\$311.0	GDP at Factor Cost (US\$ millions) ^I	\$635.7
Tourism Budget (US\$ thousands) ^b	\$18,679	Hotel and Restaurant contribution to GDP ^{II}	12.6%
		Consumer Price Index (% ch. 2009/'08)	1.5%
ACCOMMODATION STATISTICS		SOCIO-ECONOMIC STATISTICS	
Rooms ^I	5,396	Land Area (square Kilometres)	616
Room Occupancy Rates ^I	61.6%	Population (thousand mid year 2008)	175.7

SAINT LUCIA

**TOURIST ARRIVALS BY MAIN MARKETS
2009**



MONTHLY TOURIST ARRIVALS



TOURIST ARRIVALS BY COUNTRY OF RESIDENCE

Country of Residence	2005	2006	2007	2008	2009	% Share 2009
United States	112557	117450	113433	108596	98685	35.4
Canada	16506	17491	18640	26279	28563	10.3
United Kingdom	84725	73312	79180	83693	71853	25.8
Germany	3318	2569	1592	1823	2416	0.9
Other Europe	12343	9684	7056	11355	12550	4.5
Caribbean	84729	78464	58917	59757	60183	21.6
Rest of World	3761	3540	8700	4258	4241	1.5
TOTAL	317939	302510	287518	295761	278491	100.0

MONTHLY TOURIST ARRIVALS

Month	2005	2006	2007	2008	2009	%Change 2009/08
January	25997	25215	21887	24958	23051	-7.6
February	27229	28619	24610	29088	25262	-13.2
March	30320	27832	26573	31982	25938	-18.9
April	38901	29024	27716	24197	26326	8.8
May	28469	28055	25212	27782	25292	-9.0
June	20753	21760	21823	23223	19706	-15.1
July	28839	30453	29825	29095	26794	-7.9
August	26474	26538	23249	25315	23304	-7.9
September	16016	16347	17064	15149	14675	-3.1
October	23511	20453	19598	18996	19031	0.2
November	23538	21153	22163	19803	21777	10.0
December	27892	27061	27798	26173	27335	4.4
TOTAL	317939	302510	287518	295761	278491	-5.8

SAINT LUCIA

CRUISE PASSENGER ARRIVALS

Month	2005	2006	2007	2008	2009	% Change 2009/08
January	68510	54532	81536	102286	100131	-2.1
February	50938	51877	79152	76574	89658	17.1
March	60392	59119	77679	92312	108392	17.4
April	49343	39384	57864	61622	61213	-0.7
May	8253	5432	24336	21748	26489	21.8
June	10264	11069	19538	19619	17792	-9.3
July	7099	10410	20024	22954	27007	17.7
August	7050	7000	26555	19659	20890	6.3
September	10200	10735	18940	9323	26774	187.2
October	10820	11187	29332	19261	32892	70.8
November	53699	40503	84639	70242	78213	11.3
December	57796	58345	90748	107080	109855	2.6
TOTAL	394364	359593	610343	622680	699306	12.3

Number of Calls	258	267	314	315	397
------------------------	-----	-----	-----	-----	-----

VISITOR ARRIVALS BY CATEGORY

Category	2005	2006	2007	2008	2009	% Share 2009
Tourists	317939	302510	287518	295761	278491	28.3
Cruise Passenger	394364	359593	610345	622680	699306	71.2
Other Same-day Visitors	7541	7051	7777	9582	4967	0.5
TOTAL	719844	669154	905640	928023	982764	100.0

TOURIST ACCOMMODATION (Rooms)

Type of Accommodation	2004	2005	2006	2007	2008
Hotels	3123	3572	3798	3981	3981
Apartments	159	166	500	470	470
Guest Houses	405	439	439	438	439
Villas\Cottages	287	334	439	-	-
TOTAL	3974	4511	5176	4889	4890

Sources: Saint Lucia Tourist Board and Government Statistical Department

ST. MAARTEN

Visitor Arrival Summary

After two consecutive years of growth in arrival numbers, Tourist Arrivals to St. Maarten have declined. The 440.2 thousand tourists who visited this destination were 7.4 percent fewer than those who visited in 2008. Significant decreases which were registered up to September gave way to modest increases in the latter months. The net result was that decreases were recorded in both the winter (13.7 percent) and summer (2.9 percent) seasons.

- ◆ The United States, which accounted for 54.6 percent of the total arrivals, fell by 6.8 percent. Declines occurred in all other markets as well. Looking at the European market by country, Holland dropped by 16.8 percent, France by 1.5 and Other Europe by 1.6 percent. Arrivals from Canada also dropped below 5.2 percent - the 2008 level. The Caribbean with a 8.9 percent share of the total arrivals fell by 15.7 percent. The negative in this market is in its fifth year running.
- ◆ Overall, 1,215.1 thousand cruise passengers arrived in St. Maarten during 500 cruise ship calls in 2009. This was a decrease in both passengers and calls.

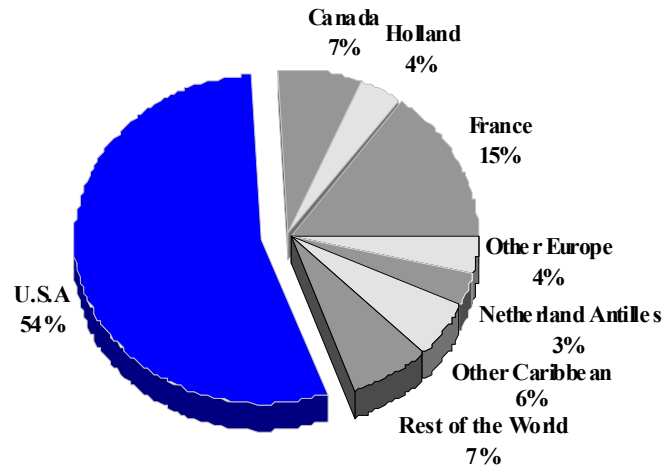
TOURISM HIGHLIGHTS FOR 2009

VISITOR ARRIVALS			
Tourist Arrivals ✈	440,185	Cruise Passengers	1,215,146
➔ Summer	61.2%	➔ Summer	43.4%
➔ Winter	38.8%	➔ Winter	56.6%
Average Length of Stay (nights)	n.a.	Cruise Ship Calls	500
TOURISM AND OTHER RELATED ECONOMIC STATISTICS			
Total Expenditure (US\$ millions) ¹ *	\$633.4	Consumer Price Index (%ch 2009/'08)	0.7%
Tourism Budget (US\$ thousands) ^{1b}	\$5,004		
ACCOMMODATION STATISTICS		SOCIO-ECONOMIC STATISTICS	
Rooms ^{vii}	3,532	Land Area (square Kilometres)	34
Room Occupancy Rates ¹	63.0%	Population (thousand mid year 2008)	40.0

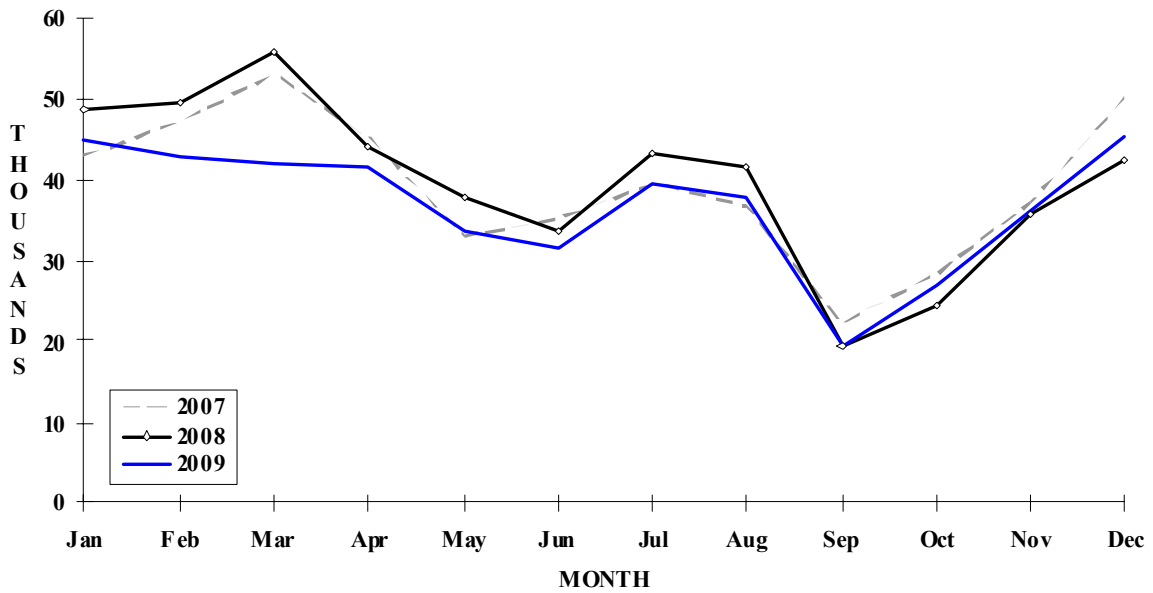
* Includes Visitor Expenditure for Saba and St. Eustatius

ST. MAARTEN

**TOURIST ARRIVALS BY MAIN MARKETS
2009**



MONTHLY TOURIST ARRIVALS



ST MAARTEN

TOURIST ARRIVALS BY NATIONALITY*

Nationality	2005	2006	2007	2008	2009	% Share 2009
United States	246858	246064	253831	257912	240431	54.6
Canada	34506	30646	32350	34055	32277	7.3
Holland	15441	15842	16889	18282	15216	3.5
France**	60524	63475	61110	67209	66177	15.0
Other Europe	17856	17741	18366	17222	16948	3.9
Neth. Antilles	16650	15746	15543	15096	13734	3.1
Other Caribbean	40426	39034	35209	31152	25266	5.7
Rest of World	35600	39256	36109	34482	30136	6.8
TOTAL	467861	467804	469407	475410	440185	100.0

*By air, including persons destined for St Martin (the French side of the island); Excludes inter-Antillean arrivals

**Includes citizens of the French West Indies.

MONTHLY TOURIST ARRIVALS*

Month	2005	2006	2007	2008	2009	% Change 2009/08
January	46632	44945	42879	48688	44647	-8.3
February	45338	46890	47098	49498	42521	-14.1
March	51264	48515	53005	55595	41878	-24.7
April	45246	50643	45123	43992	41601	-5.4
May	33578	33782	32863	37878	33566	-11.4
June	33816	32962	35085	33707	31464	-6.7
July	42150	41273	39346	43162	39546	-8.4
August	34245	35311	36683	41291	37549	-9.1
September	20387	20885	22154	19273	19183	-0.5
October	30309	28056	28329	24409	27045	10.8
November	37150	37550	36968	35596	36005	1.1
December	47746	46992	49874	42321	45180	6.8
TOTAL	467861	467804	469407	475410	440185	-7.4

*Arrivals at Juliana Airport (includes visitors destined for St Martin)

ST MAARTEN

CRUISE PASSENGER ARRIVALS

Month	2005	2006	2007	2008	2009	% Change 2009/08
January	178231	165773	195692	174778	195440	11.8
February	164100	157220	160426	162491	170828	5.1
March	182012	176707	176115	180709	174755	-3.3
April	150387	146473	128574	137299	146280	6.5
May	79501	89624	76668	57983	50266	-13.3
June	77829	69248	69046	59273	43494	-26.6
July	74366	66864	67025	64478	45414	-29.6
August	69554	74942	88132	59474	39447	-33.7
September	63183	63630	63766	52341	37892	-27.6
October	116473	82239	85007	75352	52841	-29.9
November	172452	158110	146734	131480	90288	-31.3
December	160373	170815	168021	190154	168201	-11.5
TOTAL	1488461	1421645	1425206	1345812	1215146	-9.7

Number of Calls	641	609	614	518	500
------------------------	-----	-----	-----	-----	-----

TOURIST ACCOMMODATION (Rooms)

Type of Accommodation	2003	2004	2005	2006	2007
Hotels	n.a	n.a	n.a	n.a	n.a
Guest Houses	n.a	n.a	n.a	n.a	n.a
Villas/Condos/Apartments	n.a	n.a	n.a	n.a	n.a
Other	n.a	n.a	n.a	n.a	n.a
Total	3532	n.a	n.a	n.a	n.a

Note: The number of rooms in French St Martin was 2903 in 1995 (See Guadeloupe)

Source: St. Maarten Tourist Bureau

ST VINCENT AND THE GRENADINES

Visitor Arrival Summary

In 2009, tourist arrivals to St. Vincent and the Grenadines declined by 10.3 percent, totalling 75.4 thousand. Winter arrivals fell off by 8.1 percent, and those in the Summer shrank by 11.4 percent.

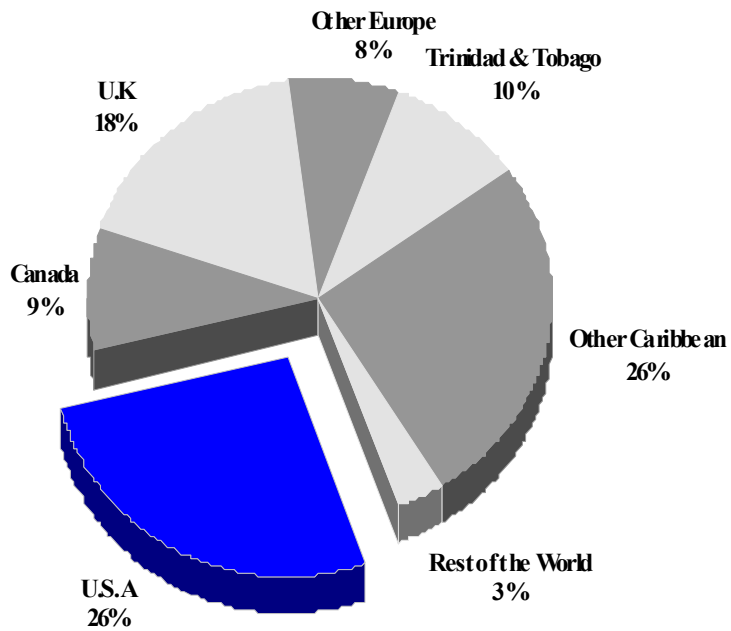
- ◆ Arrivals from the Caribbean, representing 35.6 percent of total Stay Over arrivals, fell off by 5.8 percent. European arrivals, likewise, had a negative 14.4 percent growth, and there were 16.2 percent fewer arrivals from the USA. Canada dropped marginally.
- ◆ There was a fall off in the number of cruise ships berthing in this territory - 164 ships in 2009 versus 164 in 200. However, the Cruise Passenger arrivals level in 2009 rebounded, with the overall total (149.5 thousand) being 28.1 percent more than what it was in the previous year. There was growth in the numbers during the winter months such that by the end of the period cruise passenger arrivals had increased by 49.4 percent. The summer period was much slower and ended without any significant change.

TOURISM HIGHLIGHTS FOR 2009

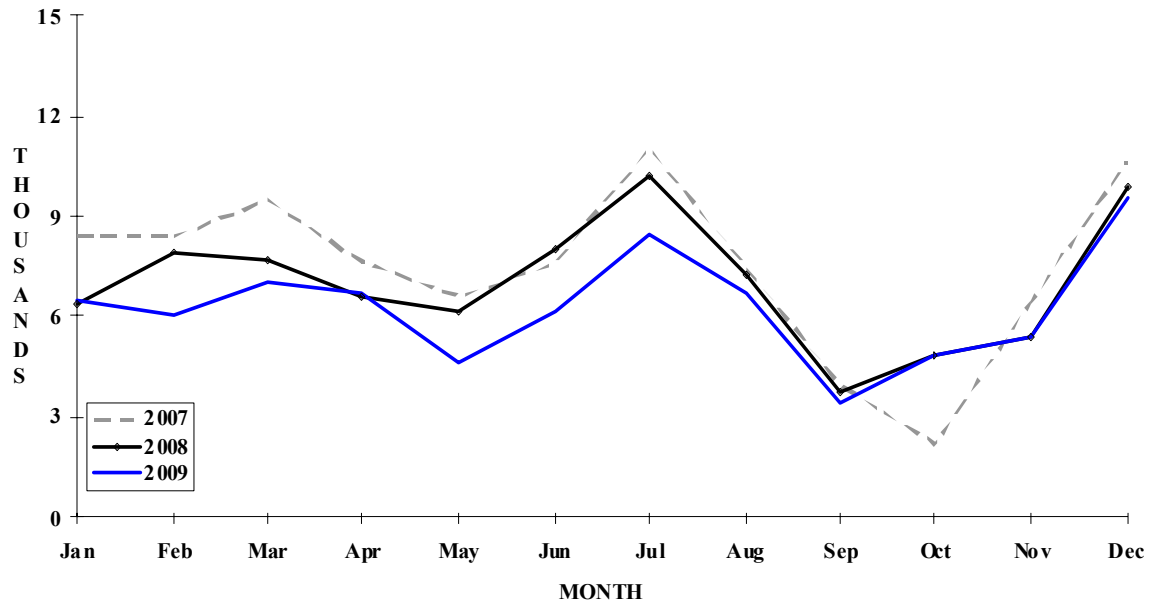
VISITOR ARRIVALS			
Tourist Arrivals →	75,446	Cruise Passengers	149,464
→ <i>Summer</i>	65.2%	→ <i>Summer</i>	33.4%
→ <i>Winter</i>	34.8%	→ <i>Winter</i>	66.6%
		Yacht Passengers	40,859
VISITOR PROFILE			
Average Length of Stay (<i>nights</i>) ¹	11.7	Tourist Arrivals by Place of Stay¹	
Tourist Arrivals by Purpose of Visit¹		→ <i>Hotels</i>	32.8%
→ <i>Holiday</i>	70.7%	→ <i>Guest House/Apartment</i>	3.9%
→ <i>Business</i>	16.6%	→ <i>Private</i>	51.8%
→ <i>Other</i>	12.7%	→ <i>Other</i>	11.5%
TOURISM AND OTHER RELATED ECONOMIC STATISTICS			
Total Expenditure (<i>US\$ millions</i>) ¹	\$96.0	GDP at Factor Cost (<i>US\$ millions</i>) ¹	\$460.1
Tourism Budget (<i>US\$ thousand</i>) ^{x,b}	\$1,557	Consumer Price Index (<i>%ch. 2009/'08</i>)	1.1%
		Hotel and Restaurant contribution to GDP ¹¹	1.9%
ACCOMMODATION STATISTICS		SOCIO-ECONOMIC STATISTICS	
Rooms ¹	2475	Land Area (<i>square Kilometres</i>)	389.0
		Population (<i>thousand mid year 2008</i>)	106.1

ST. VINCENT & THE GRENADINES

TOURIST ARRIVALS BY MAIN MARKETS 2009



MONTHLY TOURIST ARRIVALS



ST VINCENT AND THE GRENADINES

TOURIST ARRIVALS BY COUNTRY OF RESIDENCE

Country of Residence	2005	2006	2007	2008	% share	
					2009	2009
United States	27153	28598	26642	24042	20159	26.7
Canada	6187	6542	6745	6882	6820	9.0
United Kingdom	13941	14837	16742	15442	13347	17.7
Other Europe	5987	7124	6712	6860	5750	7.6
Trinidad & Tobago	11683	11002	8610	8335	7346	9.7
Other Caribbean	28261	27217	21349	20140	19489	25.8
Rest of World	2292	2112	2837	2400	2535	3.4
TOTAL	95504	97432	89637	84101	75446	100.0

MONTHLY TOURIST ARRIVALS

Month	2005	2006	2007	2008	% Change	
					2009	2009/08
January	7963	7943	8406	6370	6444	1.2
February	7515	7404	8381	7976	6049	-24.2
March	9764	9345	9461	7664	7065	-7.8
April	7255	10581	7636	6567	6704	2.1
May	6670	6359	6579	6131	4676	-23.7
June	7444	8470	7538	8020	6137	-23.5
July	11514	11373	11010	10171	8454	-16.9
August	8871	8316	7468	7257	6670	-8.1
September	4191	3951	3935	3800	3392	-10.7
October	6271	5039	2194	4832	4851	0.4
November	6400	6789	6440	5388	5404	0.3
December	11646	11862	10589	9925	9600	-3.3
TOTAL	95504	97432	89637	84101	75446	-10.3

ST VINCENT AND THE GRENADINES

CRUISE PASSENGER ARRIVALS*

Month	2005	2006	2007	2008	% Change	
					2009	2009/08
January	8979	18827	30142	22441	36056	60.7
February	7909	19712	23292	16643	25579	53.7
March	13257	15393	20843	14065	27817	97.8
April	3764	8766	14918	13540	10155	-25.0
May	287	422	6890	745	2006	169.3
June	231	212	2420	0	0	-
July	153	240	2861	97	0	-
August	75	120	4513	0	0	-
September	82	180	2206	0	0	-
October	2501	1644	5135	2771	3166	14.3
November	11735	16701	11053	16089	16369	1.7
December	20780	24257	20282	30318	28316	-6.6
TOTAL	69753	106474	144555	116709	149464	28.1

VISITOR ARRIVALS BY FIRST PORT OF ENTRY IN 2009

Port	St. Vincent	Bequia	Mustique	Canouan	Union Island	Total
Air*	57576	3256	6209	6669	6921	80631
Sea**	127218	36602	1083	461	24957	190321

* Includes same-day visitors

** Includes Cruiseship and Yacht Passengers

Type of Accommodation	2004	2005	2006	2007	2008
Hotels	839	826	915	n.a	1133
Apartments	526	526	358	n.a	453
Cottages, Villas,	249	249	240	n.a	608
Guest Houses	265	171	265	n.a	589
TOTAL	1879	1772	1778	n.a	2783

Source: Department of Tourism, St Vincent and the Grenadines