

SURINAME

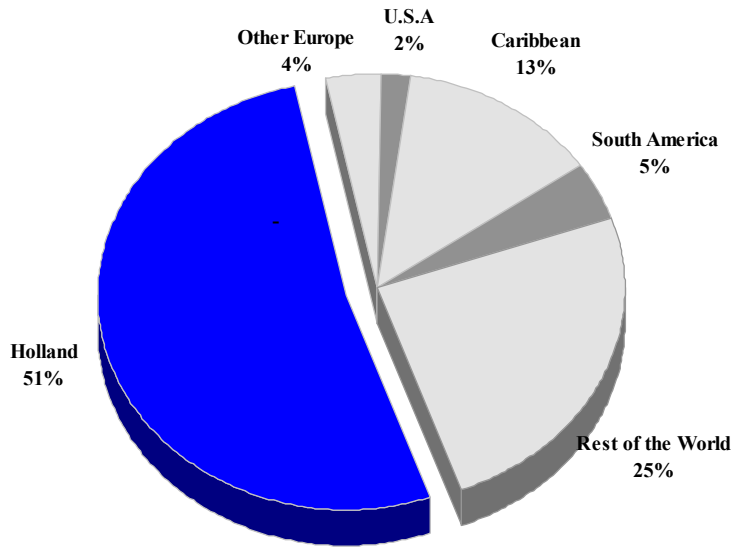
TOURISM HIGHLIGHTS FOR 2006

VISITOR ARRIVALS			
Air Arrivals ^e ✈	152,895	Sea Arrivals	n.a.
VISITOR PROFILE			
Tourist Arrivals by Purpose of Visit		Tourist Arrivals by Place of Stay *	
➤ <i>Holiday</i>	83.8%	➤ <i>Hotels</i>	11%
➤ <i>Business</i>	9.4%	➤ <i>Private/Unregistered</i>	40%
➤ <i>Other</i>	6.8%	➤ <i>Friend/not specified</i>	49%
TOURISM AND OTHER RELATED ECONOMIC STATISTICS			
Total Expenditure (US\$ millions) ^{III}	\$50.0	GDP at Factor Cost (US\$ millions)	\$1,128.1
ACCOMMODATION STATISTICS		SOCIO-ECONOMIC STATISTICS	
Number of rooms ^{VII}	1,276	Land Area (thousand square Kilometres)	163.8
		Population (thousand mid year 2001)	441.4

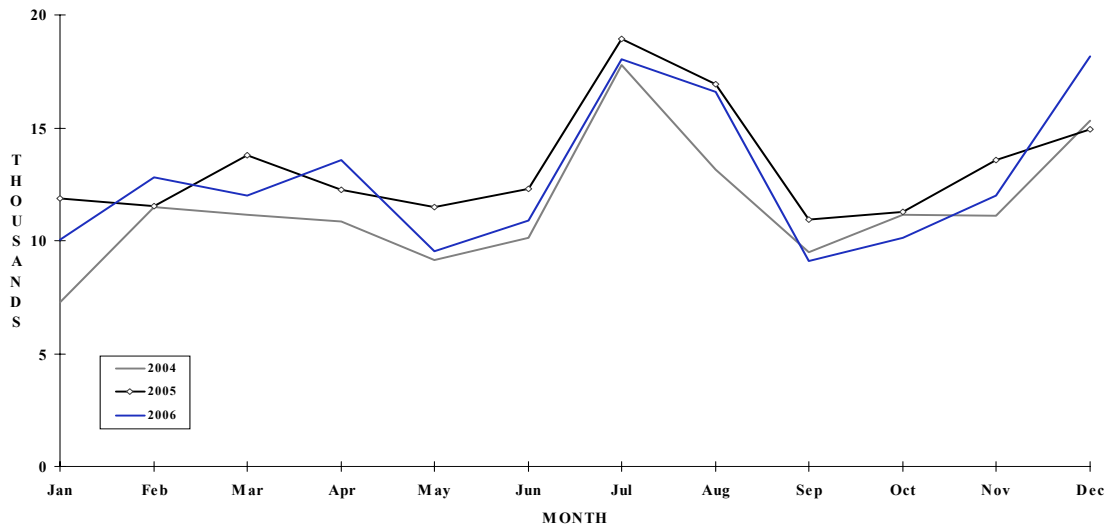
* Based on 2000 visitor survey

SURINAME

**TOURIST ARRIVALS BY MAIN MARKETS
2006**



MONTHLY TOURIST ARRIVALS



SURINAME

VISITOR ARRIVALS BY CATEGORY

Category	2002	2003ⁿ	2004	2005	2006	% Share 2006
Air Arrivals	n.a	n.a	n.a	n.a		n.a
Sea Arrivals *	n.a	n.a	n.a	n.a		n.a
Total	n.a	n.a	** 96019	188622	n.a	n.a

ⁿ New series

* Arrivals at Nieuw Nickerie Harbour

** June - Dec only

TOURIST AIR ARRIVALS BY NATIONALITY

Country of Residence	2002	2003ⁿ	2004	2005	2006	% Share 2006
United States	n.a	2442	4465	4673	3411	2.2
Canada	n.a	n.a	0	0	0	0.0
Holland	n.a	48086	82215	93658	91912	60.1
Other Europe	n.a	1276	0	5850	6380	4.2
South America	n.a	7586	4260	6739	7926	5.2
Caribbean	n.a	8469	13573	22540	22854	14.9
Rest of World	n.a	3642	0	26310	20412	13.4
TOTAL	n.a	** 71501	104513	159770	152895	100.0

SURINAME

MONTHLY AIR ARRIVALS*

Month						% Change
	2002	2003 ⁿ	2004	2005	2006	2006/05
January	n.a	n.a.	7286	11852	10056	-15.2
February	n.a	n.a.	11497	11518	12812	11.2
March	n.a	n.a.	11138	13768	12019	-12.7
April	n.a	n.a.	10848	12248	13582	10.9
May	n.a	n.a.	9128	11484	9520	-17.1
June	n.a	12343	10115	12284	10888	-11.4
July	n.a	16567	17784	18934	18035	-4.7
August	n.a	7618	13151	16936	16601	-2.0
September	n.a	4678	9509	10955	9089	-17.0
October	n.a	8317	11142	11266	10143	-10.0
November	n.a	8963	11144	13572	11991	-11.6
December	n.a	12995	15301	14953	18159	21.4
TOTAL	0	71481	138043	159770	152895	-4.3

* Includes Surinamese residents

55093	62272	n.a	-	-
-------	-------	-----	---	---

TOURIST ACCOMMODATION (Rooms)

Type of Accommodation	2002	2003	2004	2005	2006
Hotels	n.a	n.a	n.a	678	
Guest Houses	n.a	n.a	n.a	n.a	
Other	n.a	n.a	n.a	1316	
TOTAL	n.a	n.a	n.a	1994	0

Source: Suriname Tourism Foundation