

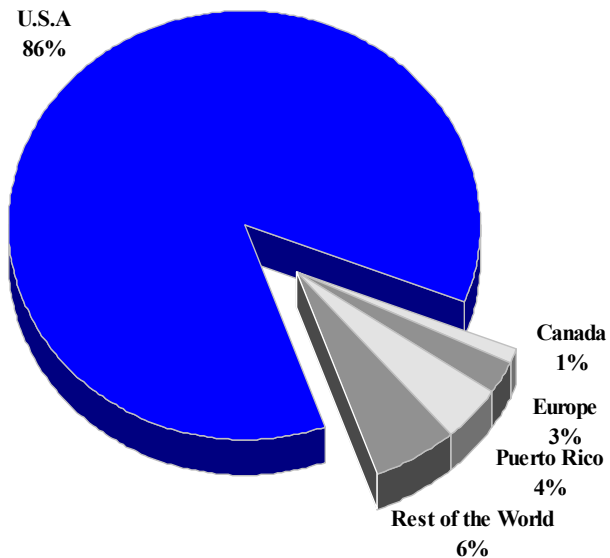
US VIRGIN ISLANDS

TOURISM HIGHLIGHTS FOR 2006

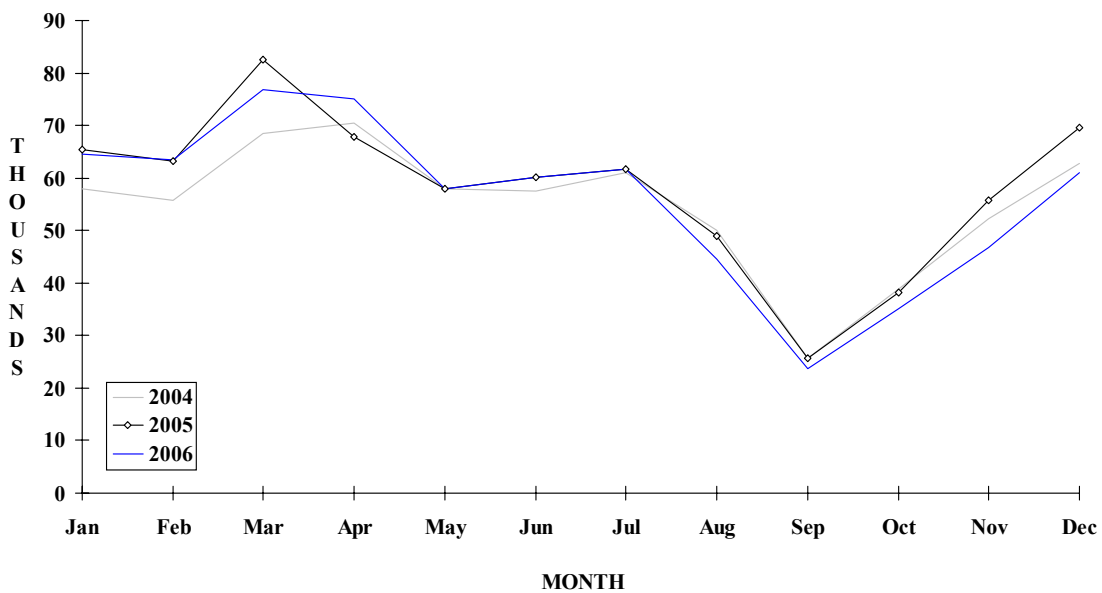
VISITOR ARRIVALS			
Tourist Arrivals ✈	671,362	Cruise Passengers	1,903,533
➔ <i>Summer</i>	60.0%	➔ <i>Summer</i>	58.2%
➔ <i>Winter</i>	40.0%	➔ <i>Winter</i>	41.8%
Same Day Visitors ¹¹	111,400	Cruise Calls	n.a
TOURISM AND OTHER RELATED ECONOMIC STATISTICS			
Total Expenditure (<i>US\$ millions</i>)	\$1,365.9	Consumer Price Index (<i>% ch. 2004/'03</i>)	2.6%
Cruise Expenditure (<i>US\$ millions</i>)	\$538.6		
ACCOMMODATION STATISTICS			
Total Hotel Rooms	4,983	St. Thomas/St. John - Hotel Rooms	3,811
Room Occupancy Rate	61.3%	Occupancy Rate	65.2%
ACCOMMODATION STATISTICS (<i>continued</i>)		SOCIO - ECONOMIC STATISTICS	
St. Croix - Hotel Rooms	1,172	Land Area (<i>square kilometers</i>)	342
Occupancy Rate	49.2%	Population (<i>thousand mid year 2004</i>)	111.5

US VIRGIN ISLANDS

**HOTEL REGISTRATIONS BY MAIN MARKET
2004**



MONTHLY TOURIST ARRIVALS



VISITOR AIR ARRIVALS BY CATEGORY

Category	2002	2003	2004	2005	2006
Tourists	520200	537900	543600		
Same-day visitors*	77700	82900	111400		
TOTAL	597900	620800	655000	0	0

St Thomas\St John 472900 505900 526400

* Excluding Cruise Passengers

NON-RESIDENT HOTEL REGISTRATIONS**

Country of Residence	2002	2003	2004	2005	2006	% Share 2006
United States	471738	496168	526587			??
Canada	4372	4822	5259			??
Europe	6144	7749	15813			??
Puerto Rico	21859	23792	24662			??
Other Caribbean	5034	4996	6771			??
Latin America	1322	1491	2548			??
Rest of World	85216	84377	26484			??
TOTAL	595685	623395	608124	0	0	??

** Totals vary according to the number of hotels responding to the survey; the reader should be wary of year-to-year comparisons.

VISITOR AIR ARRIVALS BY MONTH***

Month	2002	2003	2004	2005	2006	% Change 2006/05
January	55024	56241	57924	65375	64971	-0.6
February	54974	55399	55754	63212	63469	0.4
March	71470	69197	68590	82601	76808	-7.0
April	58839	54704	70415	67910	74989	10.4
May	48433	52459	58041	57883	57929	0.1
June	50318	48578	57612	60209	60087	-0.2
July	49543	53668	60956	61732	61643	-0.1
August	46161	49954	50059	48975	44628	-8.9
September	23435	25350	25631	25653	23779	-7.3
October	31684	36344	38808	38159	35204	-7.7
November	47169	55518	52166	55760	46769	-16.1
December	60863	63402	62682	69564	61086	-12.2
TOTAL	597913	620814	658638	697033	671362	-3.7

*** Excluding resident arrivals and inter-island traffic but including excursionists

US VIRGIN ISLANDS

CRUISE PASSENGER ARRIVALS

Month						% Change	
	2002	2003	2004	2005	2006	2006/05	
January	237767	203182	223648	226134	200681	-11.3	
February	198263	181901	205257	206968	187511	-9.4	
March	219810	193414	230497	244794	208264	-14.9	
April	161235	182605	185792	217549	198878	-8.6	
May	103064	106055	118496	117759	124800	6.0	
June	88152	92844	126643	99201	101846	2.7	
July	101672	103017	123695	94655	118570	25.3	
August	98079	96733	109498	102297	126044	23.2	
September	74788	87661	72764	73236	107313	46.5	
October	110793	116450	129480	142483	124427	-12.7	
November	145473	191191	199627	185387	185717	0.2	
December	199607	218695	239292	202085	219482	8.6	
TOTAL	1738703	1773748	1964689	1912548	1903533	-0.5	
Number of Calls	845	888	925	n.a	n.a		

TOURIST ACCOMMODATION

Type of Accommodation	2002	2003	2004	2005	2006
Hotel (rooms)	3991	3985	3930		
Condo/Villa Units	1101	1059	1053		
TOTAL	5092	5044	4983	0	0
St Thomas/St. John	3940	3864	3811		
St Croix	1197	1180	1172		

Source: Bureau of Economic Analysis, USVI Department of Commerce