

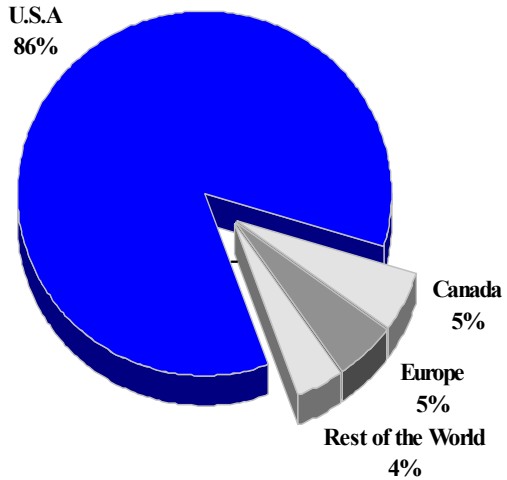
THE BAHAMAS

TOURISM HIGHLIGHTS FOR 2006

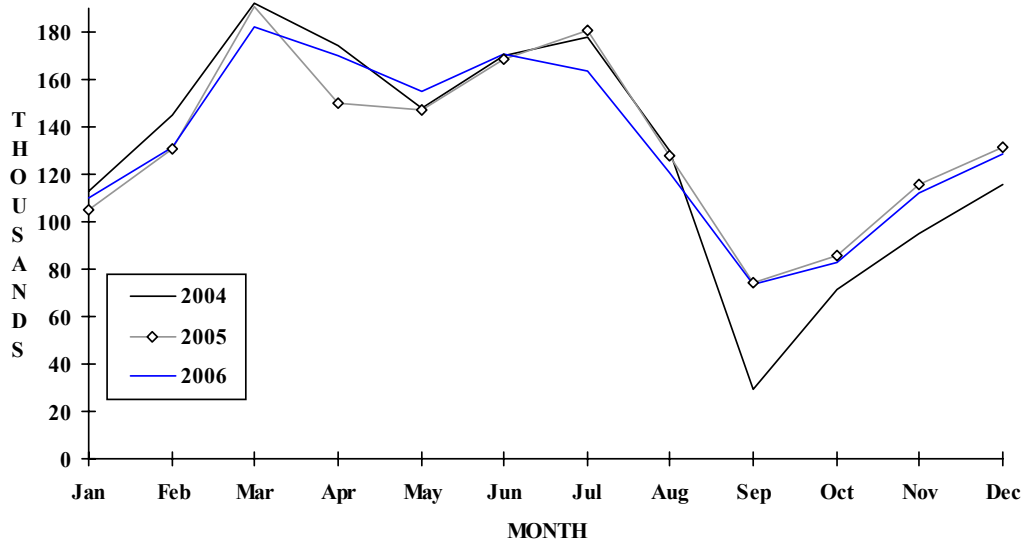
VISITOR ARRIVALS			
Tourist Arrivals ➔	1,600,112	Cruise Passenger Arrivals	3,076,397
➔ <i>Winter</i>	37.1%	➔ <i>Winter</i>	37.7%
➔ <i>Summer</i>	62.9%	➔ <i>Summer</i>	62.3%
Same Day Visitors	n.a	Cruise Ship Calls	
VISITOR PROFILE			
Average Length of Stay (<i>nights</i>)		Tourist Arrivals by Place of Stay	
Tourist Arrivals by Purpose of Visit		➔ <i>Hotels</i>	73.8%
➔ <i>Holiday</i>	89.1%	➔ <i>Guest Houses/Apartments</i>	11.3%
➔ <i>Business</i>	9.5%	➔ <i>Private</i>	4.6%
➔ <i>Other</i>	1.4%	➔ <i>Other</i>	10.3%
TOURISM AND OTHER RELATED ECONOMIC STATISTICS			
Total Expenditure (<i>US\$ millions</i>)	\$1,884.5	GDP at Market Prices (<i>US\$ million</i>) ¹	\$5,260.0
Cruise Expenditure (<i>US\$ millions</i>)	\$185.8	Consumer Price Index (% <i>ch.</i> 2004/'03)	1.7%
Tourism Budget (<i>US\$ thousands</i>)	\$67,150		
ACCOMMODATION STATISTICS		SOCIO-ECONOMIC STATISTICS	
Rooms	15,508	Land Area (<i>square Kilometres</i>)	13,864
Room Occupancy Rates	65.1%	Population (<i>thousand mid year 2004</i>)	320.7

THE BAHAMAS

**TOURIST ARRIVALS BY MAIN MARKETS
2006**



MONTHLY TOURIST ARRIVALS



VISITOR ARRIVALS BY CATEGORY

Category	2002	2003	2004	2005	2006
Tourists	1513151	1510169	1561312	1608153	1600112
Cruise Passenger	2802112	2970174	3360012	3335110	3076397
Day Visitors	n.a	83921	86291	n.a	n.a
TOTAL	n.a	n.a	5007615	4943263	4676509

TOURIST ARRIVALS BY COUNTRY OF RESIDENCE

Country of Residence	2002	2003	2004	2005	2006	% Share 2006
United States	1310140	1305335	1360912	1380083	1364468	85.3
Canada	68592	63148	68462	75643	84626	5.3
Europe	79564	93170	83590	85277	82157	5.1
Rest of the World	54855	48516	48348	67150	68861	4.3
TOTAL	1513151	1510169	1561312	1608153	1600112	100.0

MONTHLY TOURIST ARRIVALS

Months	2002	2003	2004	2005	2006	% Change 2006/05
January	97425	102975	112604	105119	109739	4.4
February	125600	125034	144852	130608	131770	0.9
March	175662	165072	192455	190708	182244	-4.4
April	138170	147212	174192	149710	169800	13.4
May	143818	135289	147997	147237	155035	5.3
June	155851	152797	170018	168408	170748	1.4
July	161545	160088	177872	180397	163310	-9.5
August	144006	137445	129714	128197	120577	-5.9
September	69559	64981	28933	74555	73839	-1.0
October	86289	89782	71710	86025	82674	-3.9
November	103521	104574	95060	115842	111937	-3.4
December	111705	124920	115905	131347	128439	-2.2
TOTAL	1513151	1510169	1561312	1608153	1600112	-0.5

BAHAMAS

TOURIST ARRIVALS BY AREA*

Area	2002	2003	2004	2005	2006
Grand Bahama	401582	376425	374433	316265	298778
Nassau\New Providence	882792	895612	921932	1019017	1018900
Family Islands	228777	238132	264947	272871	282434
TOTAL	1577066	1510169	1561312	1608153	1600112

* Intended address in The Bahamas

CRUISE PASSENGER ARRIVALS

Months	2002	2003	2004	2005	% Change	
					2006	2006/05
January	252011	268920	281142	283378	272325	-3.9
February	250999	253670	280530	262342	256617	-2.2
March	290523	282087	369690	302994	310835	2.6
April	243401	255661	363928	309188	321492	4.0
May	205102	234543	274785	217304	244376	12.5
June	220339	230630	262860	202802	231816	14.3
July	228980	228600	309423	249978	246289	-1.5
August	223663	250431	296654	212752	225041	5.8
September	189425	183581	116977	190995	190834	-0.1
October	197791	216568	246867	237414	209638	-11.7
November	243646	278966	276422	276793	251985	-9.0
December	256232	286517	280734	332769	315149	-5.3
TOTAL	2802112	2970174	3360012	3078709	3076397	-0.1
Grand Bahama	196923	203312	327933	321582	339913	5.7
New Providence	1645904	1687851	1981883	1880696	1660094	-11.7
Family Islands	959285	1079011	1050196	876431	1076390	22.8

TOURIST ACCOMMODATION (Rooms)*

Type of Accommodation	2002	2003	2004	2005	2006
Total Rooms	15145	15393	15508	14800	14929

*Licensed Properties

Source: Bahamas Ministry of Tourism