

## SURINAME

### Visitor Arrival Summary

Tourist Air Arrivals to Suriname slipped marginally by 0.2 percent to end at 150.4 thousand. Winter arrivals suffered a significant 31.6 percent decline, whereas the Summer grew by 14.4 percent.

- ◆ Arrivals from Holland continued to dominate the market with a 53.9 percent share, even though diminishing by 8.2 percent. The Caribbean market, 19.4 percent of all Tourist Air arrivals, register a health growth with a 30.7 percent increase. Likewise, the South American market, holding a 15.4 percent market share, grew by 3.4 percent.

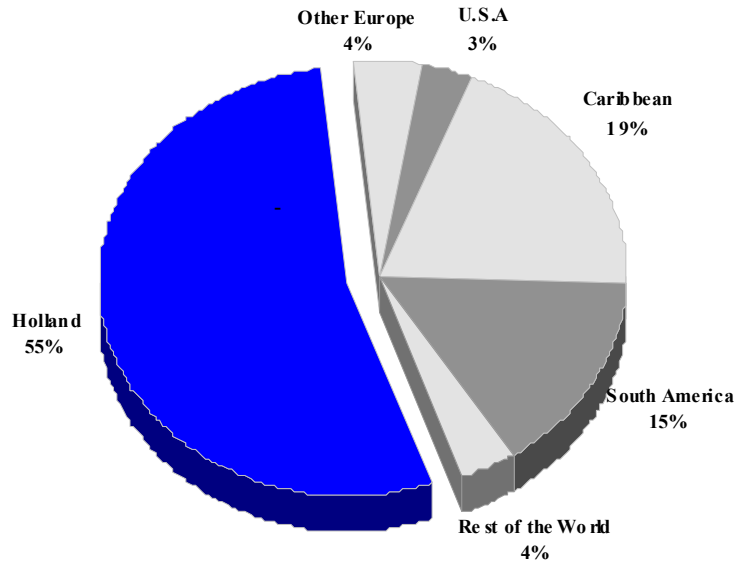
### TOURISM HIGHLIGHTS FOR 2009

VISITOR ARRIVALS			
Air Arrivals ➔	150,396	Sea Arrivals	n.a.
VISITOR PROFILE			
<b>Tourist Arrivals by Purpose of Visit <sup>IV</sup></b>		<b>Tourist Arrivals by Place of Stay *</b>	
➔ <i>Holiday</i>	83.8%	➔ <i>Hotels</i>	11%
➔ <i>Business</i>	9.4%	➔ <i>Private/Unregistered</i>	40%
➔ <i>Other</i>	6.8%	➔ <i>Friend/not specified</i>	49%
TOURISM AND OTHER RELATED ECONOMIC STATISTICS			
Total Expenditure (US\$ millions) <sup>I</sup>	\$77.4	GDP at Factor Cost (US\$ millions) <sup>IV</sup>	\$1,128.1
ACCOMMODATION STATISTICS		SOCIO-ECONOMIC STATISTICS	
Number of rooms <sup>IV</sup>	1,994	Land Area (thousand square Kilometres)	163.8
		Population (thousand mid year 2007)	509.9

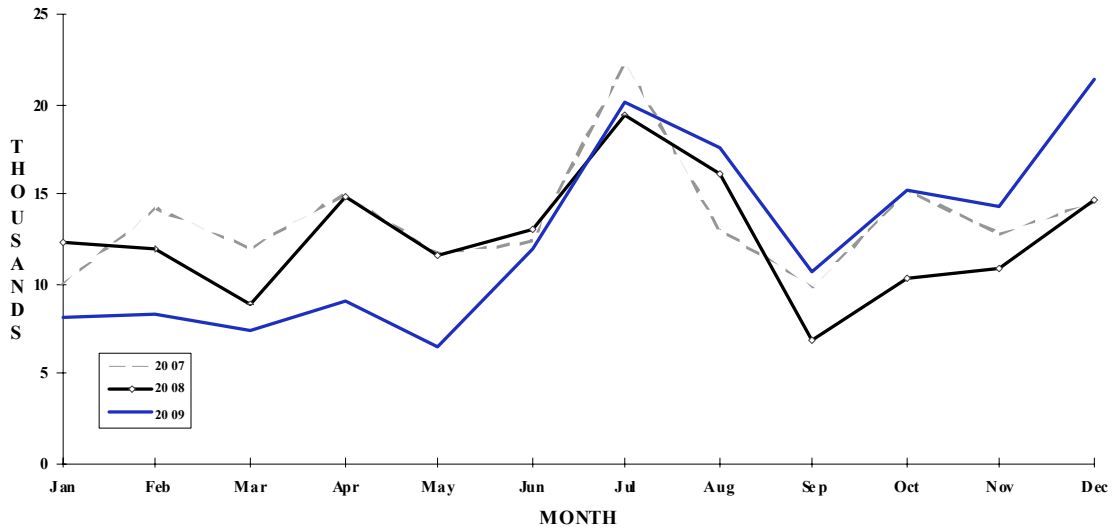
*\* Based on 2000 visitor survey*

# SURINAME

## TOURIST ARRIVALS BY MAIN MARKETS 2009



## MONTHLY TOURIST ARRIVALS



**SURINAME**

**VISITOR ARRIVALS BY CATEGORY**

<b>Category</b>	<b>2003 <sup>n</sup></b>	<b>2004</b>	<b>2005</b>	<b>2006</b>	<b>2007</b>	<b>% Share 2007</b>
Air Arrivals	n.a	n.a	n.a	n.a	n.a	n.a
Sea Arrivals *	n.a	n.a	n.a	n.a	n.a	n.a
<b>Total</b>	<b>n.a</b>	<b>** 96019</b>	<b>188622</b>	<b>n.a</b>	<b>n.a</b>	<b>n.a</b>

<sup>n</sup> New series

\* Arrivals at Nieuw Nickerie Harbour

\*\* June - Dec only

**TOURIST AIR ARRIVALS BY NATIONALITY**

<b>Country of Residence</b>	<b>2005</b>	<b>2006</b>	<b>2007</b>	<b>2008</b>	<b>2009</b>	<b>% Share 2009</b>
United States	4673	3411	4573	4973	4950	3.3
Canada	n.a	n.a	1226	1193	1295	0.9
Holland	93658	91912	101222	88380	81114	53.9
Other Europe	5850	6380	6912	6919	6685	4.4
South America	26583	22362	21683	22441	23198	15.4
Caribbean	22540	22854	22922	22316	29178	19.4
Rest of World	6466	5976	3971	4489	3976	2.6
<b>TOTAL</b>	<b>159770</b>	<b>152895</b>	<b>162509</b>	<b>150711</b>	<b>150396</b>	<b>100.0</b>

## SURINAME

## MONTHLY AIR ARRIVALS\*

Month	2005					2009	
	2005	2006	2007	2008	2009	% Change 2009/08	
January	11852	10056	9948	12309	8173	-33.6	
February	11518	12812	14172	11916	8300	-30.3	
March	13768	12019	11966	8947	7393	-17.4	
April	12248	13582	14976	14832	8987	-39.4	
May	11484	9520	11652	11576	6397	-44.7	
June	12284	10888	12324	13104	12007	-8.4	
July	18934	18035	22207	19452	20023	2.9	
August	16936	16601	13050	16081	17532	9.0	
September	10955	9089	9765	6794	10641	56.6	
October	11266	10143	15145	10265	15262	48.7	
November	13572	11991	12758	10808	14237	31.7	
December	14953	18159	14546	14627	21444	46.6	
<b>TOTAL</b>	<b>159770</b>	<b>152895</b>	<b>162509</b>	<b>150711</b>	<b>150396</b>	<b>-0.2</b>	

## TOURIST ACCOMMODATION (Rooms)

Type of Accommodation	2002	2003	2004	2005
Hotels	n.a	n.a	n.a	678
Guest Houses	n.a	n.a	n.a	n.a
Other	n.a	n.a	n.a	1316
<b>TOTAL</b>	<b>n.a</b>	<b>n.a</b>	<b>n.a</b>	<b>1994</b>

Source: Suriname Tourism Foundation

## TRINIDAD AND TOBAGO

### Visitor Arrival Summary

**Full year Tourist arrivals to Trinidad and Tobago were unavailable for 2009.** Reported numbers up to November show a 5.5 percent decline, with the Winter down by 7.7 percent and the Summer down by 17.6 percent. The total for January to November was reported at 371.9 thousand as compared with 393.4 thousand for the similar period in 2008.

- ◆ Arrivals from the USA market continued to dominate the market with a 45.8 percent share, even though results showed a 9.2 percent decline. The Canadian market, 11.4 percent of all Stay Over arrivals, continued to register growth with a 4.3 percent increase. The Caribbean, while remaining an important source market (20.0 percent of the whole), fell away sharply by 22.8 percent, ending at 74.5 thousand tourists (Jan-Nov). Arrivals from the European market (14.5 percent market share) continued to shrink to be down by 14.6 percent, ending with an aggregate of 53.9 thousand arrivals.
- ◆ The Cruise industry recorded exponential growth in 2009 as it recovered from the slump in 2008. An estimated 119.6 thousand Cruise Passengers arrived, a growth of 145.8 percent, with 82.7 thousand arriving in the Winter and 36.9 thousand arriving in the Summer.

### TOURISM HIGHLIGHTS FOR 2009

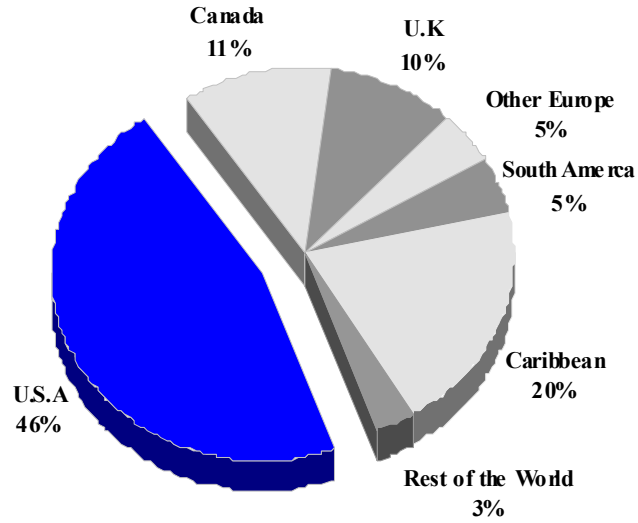
VISITOR ARRIVALS			
Tourist Arrivals <i>Jan-Nov</i> ✈	371,889	Cruise Passengers	119,600
➔ <i>Summer</i>	61.5%	➔ <i>Summer</i>	30.8%
➔ <i>Winter</i>	38.5%	➔ <i>Winter</i>	69.2%
VISITOR PROFILE			
Tourist Arrivals by Purpose of Visit <sup>I</sup>		Tourist Arrivals by Place of Stay <sup>I</sup>	
➔ <i>Holiday</i>	62.7%	➔ <i>Hotels</i>	17.5%
➔ <i>Business</i>	19.1%	➔ <i>Apartment/Guest Houses</i>	4.6%
➔ <i>Other</i>	18.2%	➔ <i>Private</i>	57.4%
		➔ <i>Other</i>	20.5%
TOURISM AND OTHER RELATED ECONOMIC STATISTICS			
Total Expenditure (US\$ millions) <sup>I</sup>	\$397.0	GDP at Factor Cost (US\$ millions) <sup>V</sup>	\$11,463.8
Tourism Budget (US\$ thousands) <sup>IX</sup>	\$4,117	Consumer Price Index (% ch. 2009/'08)	6.9%
ACCOMMODATION STATISTICS		SOCIO-ECONOMIC STATISTICS	
Rooms <sup>I*</sup>	5,796	Land Area (square Kilometres)	5,128
Room Occupancy Rates <sup>II</sup>	52.0%	Population (thousand mid year 2008)	1,308.6

\* estimate

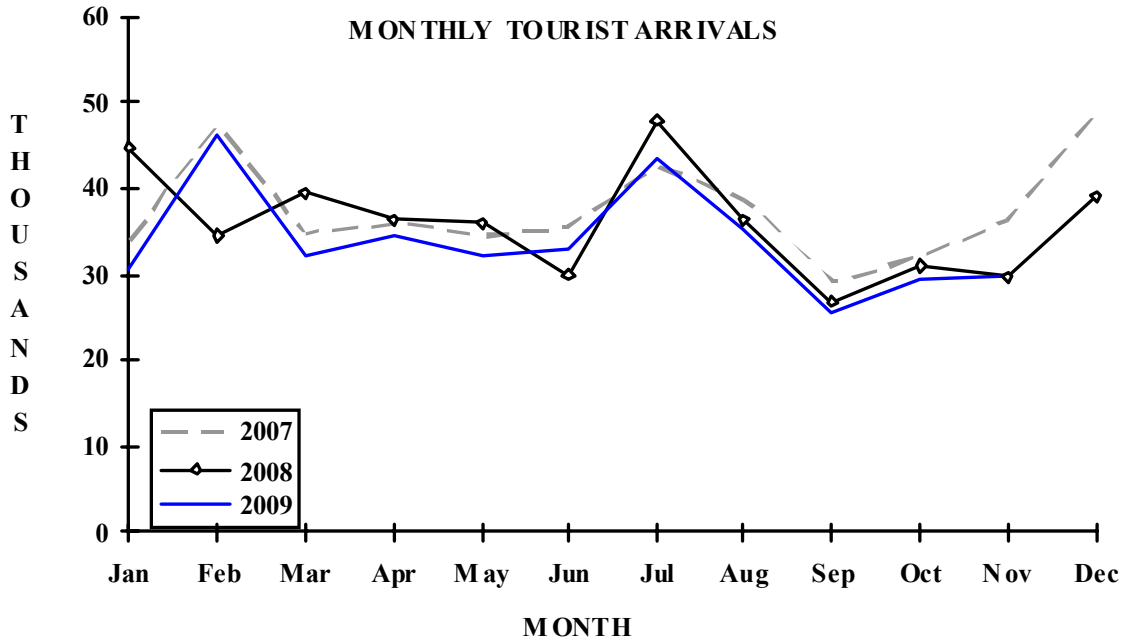
# TRINIDAD & TOBAGO

## TOURIST ARRIVALS BY MAIN MARKETS

2009 Jan-Nov



## MONTHLY TOURIST ARRIVALS



TRINIDAD AND TOBAGO

TOURIST ARRIVALS BY COUNTRY OF RESIDENCE

Country of Residence	2005	2006	2007	2008	2009 <sup>Jan-Nov</sup>	% Share 2009
United States	167985	170893	180557	187515	170204	45.8
Canada	47702	49242	51411	53647	42537	11.4
United Kingdom	63523	58612	58660	43051	36064	9.7
Other Europe	27913	25647	23851	20138	17881	4.8
South America	14907	15231	17380	18005	16637	4.5
Guyana	22208	23673	25668	24696	18730	5.0
Barbados	35319	31218	21491	19130	13165	3.5
Other Caribbean	73689	71193	56458	52785	42655	11.5
Rest of World	9945	11725	13977	13584	14016	3.8
<b>TOTAL</b>	<b>463191</b>	<b>457434</b>	<b>449453</b>	<b>432551</b>	<b>371889</b>	<b>100.0</b>

MONTHLY TOURIST ARRIVALS

Month	2005	2006	2007	2008	2009	% Change 2009/08
January	44503	31481	33881	44949	30620	-31.9
February	45294	54302	47373	34525	46085	33.5
March	43498	35670	34862	39499	32005	-19.0
April	36023	39610	36063	36388	34641	-4.8
May	35194	37779	34487	36044	32048	-11.1
June	33539	33948	35298	30002	33126	10.4
July	45307	45372	42524	47948	43450	-9.4
August	39802	41457	38791	36414	35112	-3.6
September	28287	26260	29140	26900	25442	-5.4
October	31517	31421	31994	30980	29562	-4.6
November	33372	31220	36190	29772	29798	0.1
December	46855	48914	48850	39130	n.a	-
<b>TOTAL</b>	<b>463191</b>	<b>457434</b>	<b>449453</b>	<b>432551</b>	<b>371889</b>	<b>-</b>



## TURKS AND CAICOS ISLANDS

Data for the Turks and Caicos Islands for 2009 was unavailable.

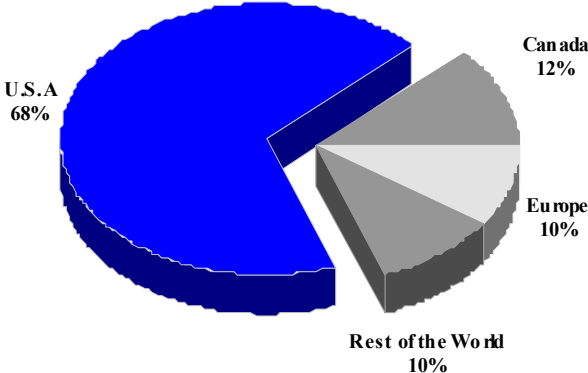
### TOURISM HIGHLIGHTS FOR 2009

VISITOR ARRIVALS			
Tourist Arrivals <sup>II</sup> ➔ ➔ <i>Summer</i> * <sup>V</sup> ➔ <i>Winter</i> * <sup>V</sup>	264,887 61.2% 38.8%	Cruise Passenger Arrivals	<u>No Cruise</u>
VISITOR PROFILE			
Average Length of Stay ( <i>nights</i> ) <sup>III</sup> Tourist Arrivals by Purpose of Visit <sup>VI</sup> ➔ <i>Holiday</i> ➔ <i>Business</i> ➔ <i>Other</i>	7.0 55.4% 36.0% 8.6%	Tourist Arrivals by Place of Stay <sup>VI</sup> ➔ <i>Hotels</i> ➔ <i>Guest Houses/Apartments</i> ➔ <i>Private</i> ➔ <i>Other</i>	62.2% 0.6% 8.7% 28.5%
TOURISM AND OTHER RELATED ECONOMIC STATISTICS			
Total Expenditure ( <i>US\$ millions</i> ) <sup>V</sup>	\$304.0	Tourism Budget ( <i>US\$ thousands</i> ) <sup>V b</sup>	\$2,316
ACCOMMODATION STATISTICS		SOCIO-ECONOMIC STATISTICS	
Rooms <sup>II</sup> Room Occupancy Rate <sup>II</sup>	2,632 64.0%	Land Area ( <i>square kilometers</i> ) Population ( <i>thousand mid year 2007</i> )	417 34.9

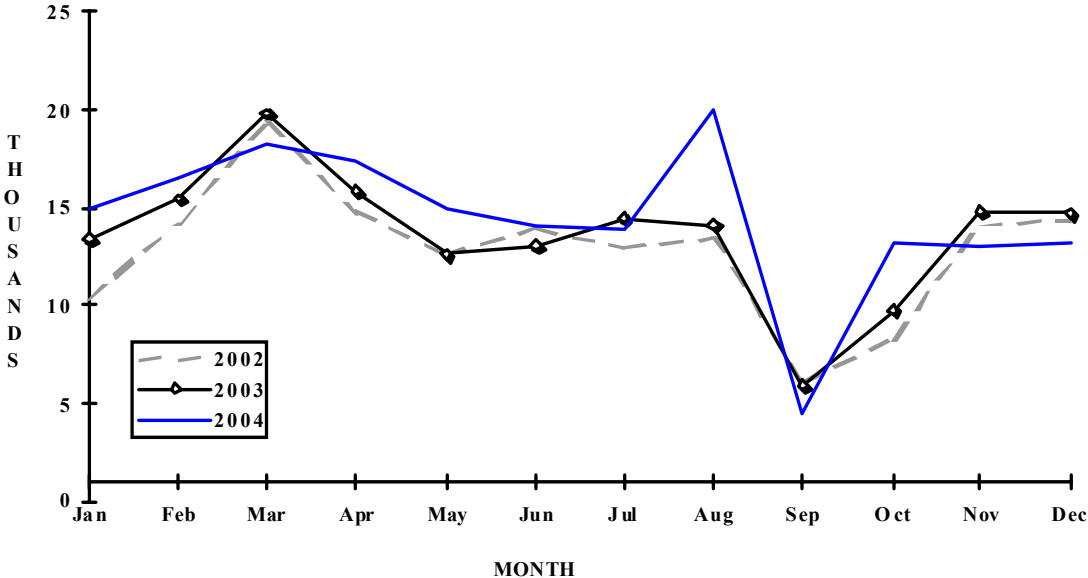
\* Based on visitor arrivals

# TURKS & CAICOS ISLANDS

**TOURIST ARRIVALS BY MAIN MARKETS  
2006**



**MONTHLY TOURIST ARRIVALS**



**TURKS AND CAICOS ISLANDS**

**TOURIST ARRIVALS**

<b>Country</b>	<b>2003</b>	<b>2004</b>	<b>2005</b>	<b>2006</b>	<b>2007</b>	<b>% Share 2007</b>
United States	128990	120645	123346	169662	n.a	-
Canada	14689	19793	21136	29802	n.a	-
United Kingdom	7266	13807	17613	24834	n.a	-
Other Europe	3801				n.a	-
Rest of World	9354	18836	14035	24045	n.a	-
<b>TOTAL</b>	<b>164100</b>	<b>173081</b>	<b>176130</b>	<b>248343</b>	<b>264887</b>	<b>100.0</b>

**MONTHLY TOURIST ARRIVALS**

<b>Month</b>	<b>2003</b>	<b>* 2004</b>	<b>2005</b>	<b>2006</b>	<b>2007</b>	<b>% Change 2007/06</b>
January	13394	15000	n.a	n.a	n.a	-
February	15452	16494	n.a	n.a	n.a	-
March	19843	18250	n.a	n.a	n.a	-
April	15861	17469	n.a	n.a	n.a	-
May	12568	15003	n.a	n.a	n.a	-
June	13042	14095	n.a	n.a	n.a	-
July	14497	13861	n.a	n.a	n.a	-
August	14171	18940	n.a	n.a	n.a	-
September	5950	4552	n.a	n.a	n.a	-
October	9767	13157	n.a	n.a	n.a	-
November	14808	13014	n.a	n.a	n.a	-
December	14747	13246	n.a	n.a	n.a	-
<b>TOTAL</b>	<b>164100</b>	<b>173081</b>	<b>176130</b>	<b>248343</b>	<b>264887</b>	<b>6.7</b>

\* Visitor Arrivals

**TOURIST ACCOMMODATION (Rooms)**

<b>Rooms</b>	<b>2003</b>	<b>2004</b>	<b>2005</b>	<b>2006</b>	<b>2007</b>
Hotels	n.a	n.a	n.a	n.a	n.a
Apartments	n.a	n.a	n.a	n.a	n.a
Villas/Cottages	n.a	n.a	n.a	n.a	n.a
Guest Houses/Other	n.a	n.a	n.a	n.a	n.a
<b>Total</b>	<b>2155</b>	<b>2190</b>	<b>2227</b>	<b>2297</b>	<b>2632</b>

Source: Tourist Board, Turks and Caicos Islands

## US VIRGIN ISLANDS

### Visitor Arrival Summary

Visitor Arrivals (Stay Over and Same-day) to the USVI slid from the 2007 level to total 683.3 thousand, a minor loss of 1.5 percent. Stopovers accounted for 84.7 percent of total visitors and decreased minimally by 0.5 percent. Same-day arrivals accounted for the remaining 15.3 percent of the total, and were reduced by 6.5 percent. Of note is that fact that the latter half of the year, July through December suffered a fall off of 8.8 percent when compared with the same period of 2007.

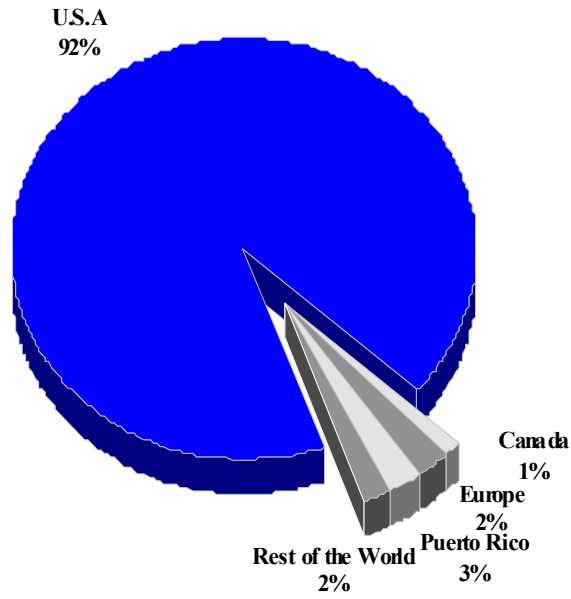
- ◆ More that 92.0 percent of all Non-resident Hotel Registrations originated from the United States, growing by 6.5 percent. The total from this market was reported at 724.9 thousand. Registrations from the Caribbean accounted for a distant 4.2 percent or 30.1 thousand.
- ◆ The 621 ships which sailed into port in 2009 only delivered an aggregate of 1,582.3 thousand passengers, the lowest it has been in six years, representing a loss of 9.9 percent. The Winter months were mainly responsible for this fall off, when 15.7 percent fewer passengers arrived during this period. Arrivals in the Summer also declined by 4.8 percent.

### TOURISM HIGHLIGHTS FOR 2009

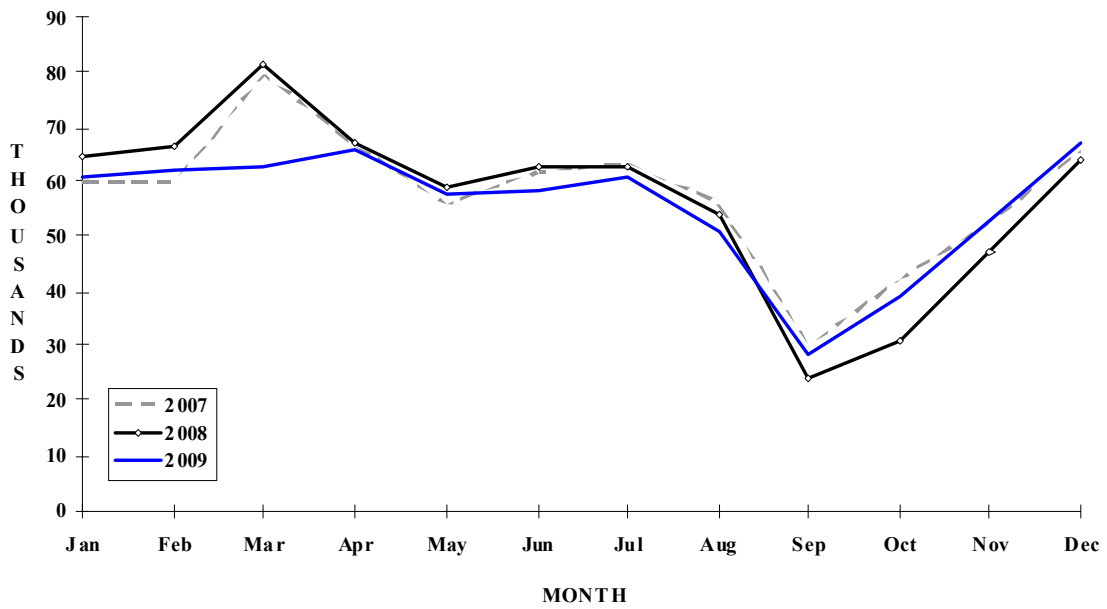
VISITOR ARRIVALS			
Tourist Arrivals ➔	562,300	Cruise Passengers	1,582,264
➔ <i>Summer</i>	62.3%	➔ <i>Summer</i>	55.4%
➔ <i>Winter</i>	37.7%	➔ <i>Winter</i>	44.6%
Same Day Visitors	102,000	Cruise Calls	621
TOURISM AND OTHER RELATED ECONOMIC STATISTICS			
Total Expenditure ( <i>US\$ millions</i> ) <sup>1</sup>	\$1,519.7	Consumer Price Index (% ch. 2008/'07)	7.1%
Cruise Expenditure ( <i>US\$ millions</i> ) <sup>1</sup>	\$526.7		
ACCOMMODATION STATISTICS			
<b>Total Hotel Rooms</b>	4,948	<b>St. Thomas/St. John - Hotel Rooms</b>	3,749
Room Occupancy Rate	54.9%	Occupancy Rate	60.3%
ACCOMMODATION STATISTICS ( <i>continued</i> )		SOCIO - ECONOMIC STATISTICS	
<b>St. Croix - Hotel Rooms</b>	1,200	Land Area ( <i>square kilometers</i> )	342
Occupancy Rate	38.7%	Population ( <i>thousand mid year 2007</i> )	109.8

# US VIRGIN ISLANDS

## HOTEL REGISTRATIONS BY MAIN MARKET 2009



## MONTHLY TOURIST ARRIVALS



US VIRGIN ISLANDS

VISITOR AIR ARRIVALS BY CATEGORY

Category	2005	2006	2007	2008	2009
Tourists	593300	570000	586400	573700	562300
Same-day visitors*	96100	97200	101900	104400	102000
<b>TOTAL</b>	<b>689400</b>	<b>667200</b>	<b>688300</b>	<b>678100</b>	<b>664300</b>

St Thomas\St John 544800 533400 558400 558400 533300

\* Excluding Cruise Passengers

NON-RESIDENT HOTEL REGISTRATIONS\*\*

Country of Residence	2005	2006	2007	2008	2009	% Share 2009
United States	531709	605763	612279	680565	724910	92.1
Canada	5372	5268	6018	9112	10412	1.3
Europe	18821	15077	14884	15859	16479	2.1
Puerto Rico	21452	24823	20682	21319	19776	2.5
Other Caribbean	7818	11226	10681	7533	10294	1.3
Latin America	2563	1762	1481	1747	1488	0.2
Rest of World	29868	37123	13553	3946	3790	0.5
<b>TOTAL</b>	<b>617603</b>	<b>701042</b>	<b>679578</b>	<b>740081</b>	<b>787149</b>	<b>100.0</b>

\*\* Totals vary according to the number of hotels responding to the survey; the reader should be wary of year-to-year comparisons.

VISITOR AIR ARRIVALS BY MONTH\*\*\*

Month	2005	2006	2007	2008	2009	% Change 2009/08
January	65375	64971	59833	64431	60679	-5.8
February	63212	63469	59783	66305	62225	-6.2
March	82601	76808	79555	81280	62585	-23.0
April	67910	74989	66643	67121	65738	-2.1
May	57883	57929	55919	58859	57571	-2.2
June	60209	60087	61742	62779	58110	-7.4
July	61732	61643	63398	62455	61144	-2.1
August	48975	44628	56009	54045	50834	-5.9
September	25653	23779	30098	24400	28410	16.4
October	38159	35204	42192	30997	39108	26.2
November	55760	46769	52593	46879	52724	12.5
December	69564	61086	65607	63743	66923	5.0
<b>TOTAL</b>	<b>697033</b>	<b>671362</b>	<b>693372</b>	<b>683294</b>	<b>666051</b>	<b>-2.5</b>

\*\*\* Excluding resident arrivals and inter-island traffic but including excursionists

US VIRGIN ISLANDS

CRUISE PASSENGER ARRIVALS

Month						% Change	
	2005	2006	2007	2008	2009	2009/08	
January	226134	200681	229450	230098	186405	-19.0	
February	206968	187511	195526	194928	181826	-6.7	
March	244794	208264	212151	226876	181175	-20.1	
April	217549	198878	167408	184125	155626	-15.5	
May	117759	124800	114689	92836	85763	-7.6	
June	99201	101846	103866	104546	91938	-12.1	
July	94655	118570	119208	105622	91489	-13.4	
August	102297	126044	127081	98503	79165	-19.6	
September	73236	107313	95632	65377	65314	-0.1	
October	142483	124427	130043	78362	98305	25.5	
November	185378	185717	186170	156425	155478	-0.6	
December	202085	219482	236654	219369	209780	-4.4	
<b>TOTAL</b>	<b>1912539</b>	<b>1903533</b>	<b>1917878</b>	<b>1757067</b>	<b>1582264</b>	<b>-9.9</b>	
Number of Calls	818	782	752	687	621		

TOURIST ACCOMMODATION

Type of Accommodation	2005	2006	2007	2008	2009
Hotel (rooms)	3687	3739	3678	3782	3809
Condo/Villa Units	1075	1073	1079	1075	1139
<b>TOTAL</b>	<b>4762</b>	<b>4812</b>	<b>4757</b>	<b>4857</b>	<b>4948</b>
St Thomas/St. John	3612	3650	3580	3670	3748
St Croix	1149	1162	1177	1187	1200

Source: Bureau of Economic Research, USVI Department of Commerce

## VENEZUELA

### Visitor Arrival Summary

Tourist Arrivals to Venezuela were reported at 615.2 thousand in 2009. This represents a 17.4 percent drop in arrival levels over the previous year's total. The Winter period only gave rise to 197.6 thousand stay overs as opposed to 268.0 thousand in 2008, a 26.3 percent reduction. The Summer period also suffered a 12.4 percent fall off, ending at 417.6 thousand in 2009.

- ◆ The Europe an market contracted by almost 20.0 percent totaling 241.4 thousand in 2009. The South American market shrank similarly by 18.2 percent, down from 226.6 thousand in 2008 to 185.3 thousand in 2009.
- ◆ Cruise Passenger Arrivals fell to two thirds the 2008 figure, amounting to 77.9 thousand. Both the Winter and Summer seasons fell away sharply by 31.9 percent and 26.5 percent respectively.

### TOURISM HIGHLIGHTS FOR 2009

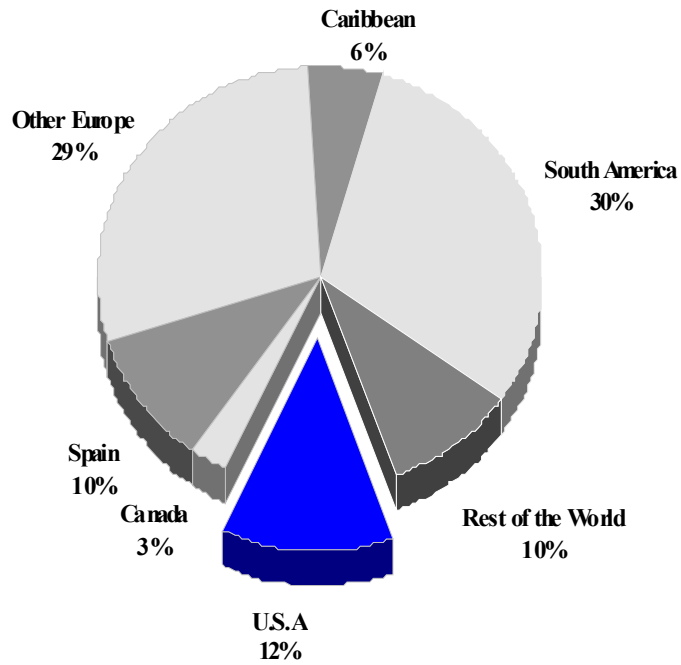
VISITOR ARRIVALS			
Tourist Arrivals ➔	615,188	Tourist Air Arrivals to Maiquetía (Caracas)	n.a
➔ Summer	67.9%	Tourists Air Arrivals to Porlamar	n.a
➔ Winter	32.1%		
Cruise Passenger Arrivals	77,941		
VISITOR PROFILE			
Tourist Arrivals by Purpose of Visit		Main Source of Information**	
➔ Holiday	71.7%	➔ Television	5.02%
➔ Business	25.2%	➔ Family and Friends	43.31%
➔ Other	3.1%	➔ Newspapers	3.01%
		➔ Other	48.66%
TOURISM AND OTHER RELATED ECONOMIC STATISTICS			
Total Expenditure (US\$ millions)	\$780.0	Average Daily Expenditure (US\$)	\$72.9
Average visitor expenditure (US\$)	\$1,305.0	GDP at Factor Cost (US\$ millions) <sup>VI</sup>	\$102,484
ACCOMMODATION STATISTICS		SOCIO-ECONOMIC STATISTICS	
Rooms <sup>II</sup>	33,290	Land Area (square kilometers)	912,050
		Population (thousand mid year 2008)	27,934.7

\*\*Source: September 1998 Survey of Receptive Tourist at the Simon Bolivar International Airport of Maquetía

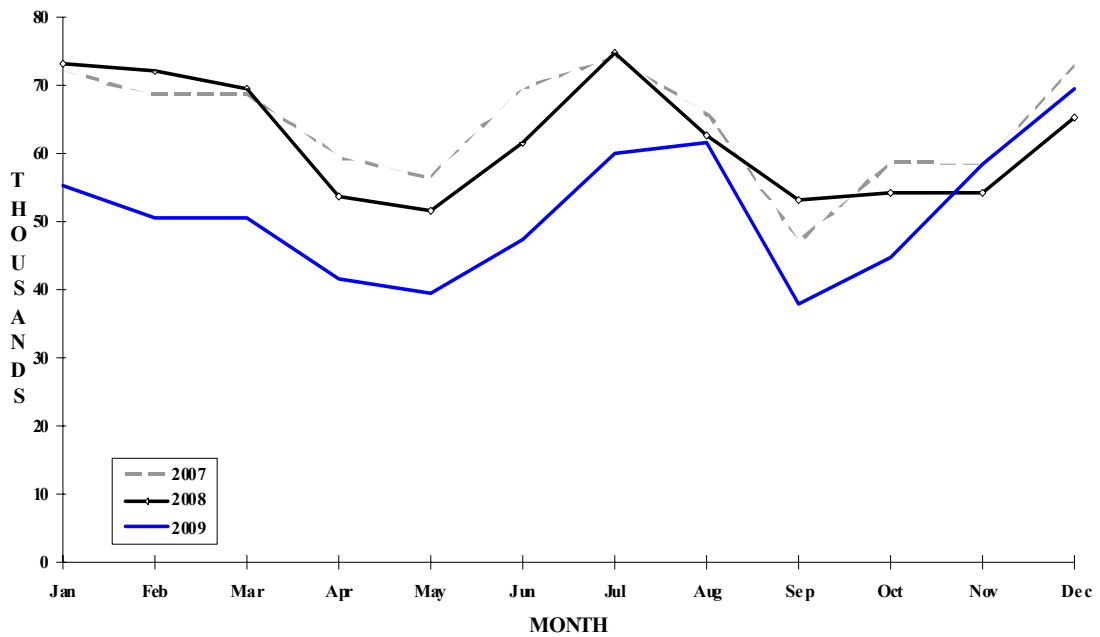
# VENEZUELA

## TOURIST ARRIVALS BY MAIN MARKETS

2009



## MONTHLY TOURIST ARRIVALS



VENEZUELA

**TOURISTS AIR ARRIVALS BY INTERNATIONAL AIRPORTS**

Area	2005	2006	2007	2008	% Share	
					2009	2009
Maiquetía (Caracas)	559884	562596	559319	543780	489056	79.5
Porlamar *	115079	121800	134063	109436	58779	9.6
Maracaibo	19012	22627	23417	28876	13251	2.2
Punto Fijo						
San Antonio						
Barcelona	12128	40907	53768	62617	54102	8.8
Barquisimeto						
Coro						
<b>TOTAL</b>	<b>706103</b>	<b>747930</b>	<b>770567</b>	<b>744709</b>	<b>615188</b>	<b>100.0</b>

*These cities are major tourism areas in Venezuela.*

*\* "The International Airport of the Caribbean" is located in Porlamar in the state of Nueva Esparta. This state consists of the tourist destinations of Margarita, Coche and Cubagua Islands*

**TOURISTS ARRIVALS BY MAJOR MARKETS**

Country of Residence	2005	2006	2007	2008	% Share	
					2009	2009
United States	89701	88825	90074	86982	76059	12.4
Canada	25527	28014	26670	25870	18165	3.0
Argentina	26596	26287	26863	26055	24601	4.0
Columbia	74497	84293	79735	77417	61659	10.0
Other South America	88256	110058	123026	123173	99042	16.1
Central America	12421	12404	11286	11377	10760	1.7
Holland	16892	18129	19985	17651	10528	1.7
Italy	56521	53177	56005	52131	45926	7.5
Spain	66181	65894	75301	66649	62848	10.2
Other Europe	156716	160401	164750	165148	122126	19.9
Caribbean	40948	43880	43256	39940	33726	5.5
Rest of World	51847	56568	53616	52316	49748	8.1
<b>TOTAL</b>	<b>706103</b>	<b>747930</b>	<b>770567</b>	<b>744709</b>	<b>615188</b>	<b>100.0</b>

VENEZUELA

TOURISTS ARRIVALS BY MONTH

Month	2005	2006	2007	2008	% Change	
					2009	2009/08
January	63517	69841	71883	72931	55118	-24.4
February	58558	63135	68564	71784	50665	-29.4
March	60418	61140	68666	69570	50311	-27.7
April	47603	51629	59470	53695	41522	-22.7
May	47583	48972	56366	51494	39194	-23.9
June	52919	56883	69504	61197	47552	-22.3
July	71052	77505	74055	74942	59760	-20.3
August	69209	69257	65571	62544	61227	-2.1
September	43678	53172	47009	53130	37646	-29.1
October	56843	57268	58465	54016	44711	-17.2
November	59526	62075	58271	54050	58273	7.8
December	75197	77053	72743	65356	69209	5.9
<b>TOTAL</b>	<b>706103</b>	<b>747930</b>	<b>770567</b>	<b>744709</b>	<b>615188</b>	<b>-17.4</b>

CRUISE PASSENGER ARRIVALS

Month	2005	2006	2007	2008	% Change	
					2009	2009/08
January	21140	36322	33455	30667	14790	-51.8
February	15835	31800	22170	19640	19954	1.6
March	25820	32838	19340	24031	19722	-17.9
April	13394	24956	11822	8714	2115	-75.7
May	0	0	2880	1416	1651	16.6
June	0	0	2602	0	978	-
July	0	0	4227	0	2249	-
August	0	0	3530	0	2861	-
September	0	0	2823	0	221	-
October	4028	2566	3257	0	3722	-
November	25651	15238	14846	9404	9678	2.9
December	28875	19625	21174	18229	0	-
<b>TOTAL</b>	<b>134743</b>	<b>163345</b>	<b>142126</b>	<b>112101</b>	<b>77941</b>	<b>-30.5</b>

## ESTIMATED VISITOR EXPENDITURE (US dollars per tourist)

Expenditure	2005	2006	2007	2008	2009
<b>Total</b>	<b>976.9</b>	<b>1159.0</b>	<b>1137.3</b>	<b>1329.0</b>	<b>1305.0</b>

## TOURISTS ACCOMMODATION BY STATES

Area	2003	2004	2005	2006	2007	% Share 2007
Caracas Metropolitan Area	8535	5934	n.a	n.a	n.a	-
Anzoátegui <sup>1</sup>	4252	4252	n.a	n.a	n.a	-
Bolívar <sup>2</sup>	1630	1630	n.a	n.a	n.a	-
Carabobo <sup>3</sup>	1599	1478	n.a	n.a	n.a	-
Falcón <sup>4</sup>	1292	1292	n.a	n.a	n.a	-
Nueva Esparta <sup>5</sup>	4309	3834	n.a	n.a	n.a	-
Mérida <sup>6</sup>	1695	1704	n.a	n.a	n.a	-
Other States	10950	13166	n.a	n.a	n.a	-
<b>Total</b>	<b>34262</b>	<b>33290</b>	<b>n.a</b>	<b>n.a</b>	<b>n.a</b>	<b>-</b>

<sup>1</sup> The State of Anzoátegui consists of the tourist destination of Barcelona - Puerto La Cruz

<sup>2</sup> The State of Bolívar consists of the tourist destination of Canaima National Park and La Gran Sabana

<sup>3</sup> The State of Carabobo consists of the tourist destination, Valencia and Puerto Cabello

<sup>4</sup> The State of Falcón consists of the tourist destinations of Coro, Punto Fijo and the Morrocoy National Park

<sup>5</sup> The State of Nueva Esparta consists of the tourist destinations of Margarita, Coche and Cubagua Islands

<sup>6</sup> The State of Mérida consists of the tourist destinations of Mérida City and the Sierra Nevada National Park





SECTION V

ECONOMIC & SOCIO-ECONOMIC INDICATORS

**DIVIDER BACK**