

JAMAICA

Visitor Arrival Summary

Total Stop-Over Arrivals of 1,414.8 thousand were recorded to have visited Jamaica in 2004, an increase of 4.8 percent. This expansion was possible despite the set back the industry suffered as a result of Hurricane Ivan. For the winter period, significant growth of 9.5 percent was registered. In the summer season, mixed fortunes were realized as the first four months posted increases and the other months saw reduced numbers.

- ◆ Stop-Over Arrivals to Jamaica out of the USA increased by a modest 2.9 percent in 2004. The market share was slightly reduced from 71.1 percent to 70.4 percent but its dominance was still maintained. The United Kingdom with 161.6 thousand arrivals recorded growth of 7.9 percent while The other European countries when considered together grew by 16.8 percent. Caribbean countries maintained the growth pattern as arrivals grew by 83 percent. The Canadian market rebounded after two years of declining fortunes with 105.6 thousand arrivals, an increase of 10.9 percent. All other markets declined.
- ◆ For second year in a row, cruise passengers arrivals to Jamaica exceeded the one million mark. However, in 2004, the 1,099.8 thousand passengers who arrived in 482 calls were 32.8 thousand passengers or 2.9 percent fewer than in 2003. Calls decreased by 4.0 percent. The active hurricane season was again contributing factor in this performance.

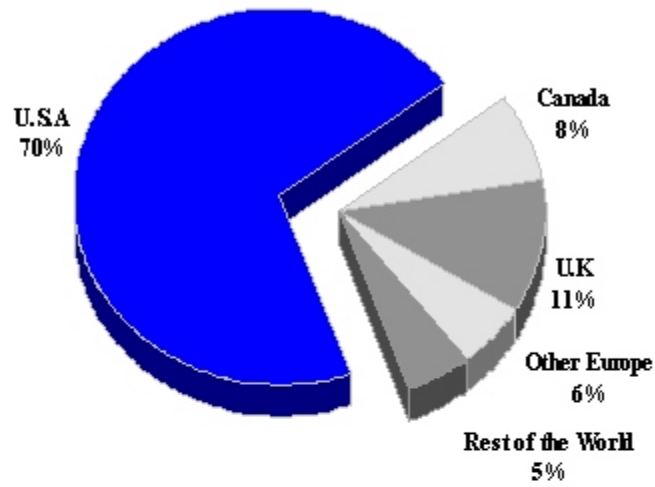
TOURISM HIGHLIGHTS FOR 2004

VISITOR ARRIVALS			
Tourist Arrivals →	1,414,786	Cruise Passengers	1,099,773
→ <i>Summer</i>	64.9%	→ <i>Summer</i>	56.4%
→ <i>Winter</i>	35.1%	→ <i>Winter</i>	43.6%
		Cruise Calls	482
VISITOR PROFILE			
Average Length of Stay (<i>nights</i>)	9.3	Tourist Arrivals by Place of Stay	
Tourist Arrivals by Purpose of Visit		→ <i>Hotels</i>	65.9%
→ <i>Holiday</i>	86.1%	→ <i>Guest Houses/Apartments</i>	4.8%
→ <i>Business</i>	11.1%	→ <i>Private</i>	27.8%
→ <i>Other</i>	2.8%	→ <i>Other</i>	1.5%
TOURISM AND OTHER RELATED ECONOMIC STATISTICS			
Total Expenditure (<i>US\$ millions</i>)	\$1,436.6	GDP at Factor Cost (<i>US\$ millions</i>)	\$7,976.5
Tourism Budget (<i>US\$ thousands</i>) *	\$29,499	Hotel and Restaurant contribution to GDP	n.a
		Consumer Price Index (<i>%ch. 2004/'03</i>)	13.6
ACCOMMODATION STATISTICS		SOCIO-ECONOMIC STATISTICS	
Rooms	24,947	Land Area (<i>square Kilometres</i>)	11,424
Room Occupancy Rates	61.4%	Population (<i>thousand mid year 2004</i>)	2,649.2

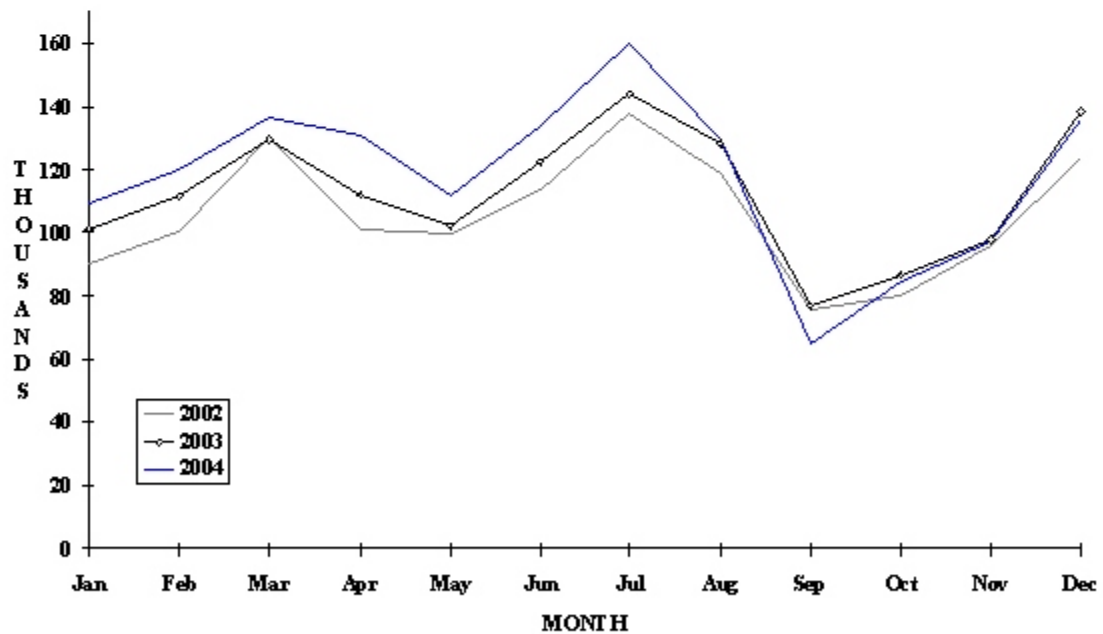
* Actual and fiscal (April-March) 2003/2004

JAMAICA

TOURIST ARRIVALS BY MAIN MARKETS 2004



MONTHLY TOURIST ARRIVALS



JAMAICA

TOURIST ARRIVALS BY COUNTRY OF RESIDENCE

Country of Residence	2000	2001	2002	2003	2004	% Share 2004
U.S.A	940884	915237	924096	968315	996131	70.4
Canada	107492	111158	97413	95265	105623	7.5
United Kingdom	135338	127320	125859	149714	161606	11.4
Other Europe	63641	53312	53230	68786	80319	5.7
Caribbean	48349	44521	45237	48041	52036	3.7
Other Americas	12002	12583	9298	8058	8050	0.6
Rest of World	14984	12385	11233	12106	11021	0.8
TOTAL	1322690	1276516	1266366	1350285	1414786	100.0

MONTHLY TOURIST ARRIVALS

Month	2000	2001	2002	2003	2004	% Change 2004/03
January	96100	101876	90097	101306	109350	7.9
February	108723	113345	100010	111458	120129	7.8
March	137408	143282	130200	129485	136606	5.5
April	119419	125661	100689	111974	131101	17.1
May	103266	104766	99314	102021	111759	9.5
June	120091	120112	113705	122071	133393	9.3
July	137771	131141	137688	144039	160231	11.2
August	118339	113669	118698	128219	129526	1.0
September	79422	63508	75918	76535	64940	-15.2
October	88001	69799	80132	86639	84802	-2.1
November	97235	82782	96095	98048	97084	-1.0
December	116915	106575	123820	138490	135865	-1.9
TOTAL	1322690	1276516	1266366	1350285	1414786	4.8

CRUISE PASSENGER ARRIVALS

Month						% Change	
	2000	2001	2002	2003	2004	2004/03	
January	84256	96643	91399	118834	124650	4.9	
February	92713	93775	76799	116451	115351	-0.9	
March	109817	103738	79547	128758	129266	0.4	
April	78341	80489	75442	108009	109744	1.6	
May	60326	60067	54453	64350	64424	0.1	
June	55653	51729	54125	64812	76427	17.9	
July	50558	52245	64512	84154	68203	-19.0	
August	77820	66637	57938	63121	69229	9.7	
September	55263	41912	52177	68058	48301	-29.0	
October	59267	50382	58749	95910	61723	-35.6	
November	88562	69827	82228	100522	98704	-1.8	
December	95035	72893	118050	119617	133751	11.8	
TOTAL	907611	840337	865419	1132596	1099773	-2.9	

Number of Calls	488	504	426	396	502
-----------------	-----	-----	-----	-----	-----

TOURIST ACCOMMODATION (Rooms)

Type of Accommodation	2000	2001	2002	2003	2004
Hotels	16100	16569	16723	16986	17533
Guest Houses	2417	2606	2637	2774	2739
Resort Cottages	3732	3787	3814	3798	3625
Apartment Houses	1381	1045	1065	1067	1050
TOTAL	23630	24007	24239	24625	24947

Area

Kingston*	2095	2050	2074	2141	2077
Montego Bay	7973	7961	7965	8019	7944
Negril	5092	5568	5647	5851	6414
Ocho Rios	6818	6719	6787	6777	6712
Port Antonio	910	850	947	991	986
Mandeville\South Coast	742	759	819	846	814

*Includes the Parish of St. Andrew

Source: Ministry of Tourism - Jamaica

MARTINIQUE

Visitor Arrival Summary

Tourist Arrival in 2004 to Martinique increased by 3.9 percent to reach 470.9 thousand which was almost 100.0 thousand fewer than the best year. The arrivals in the winter season declined by 4.5 percent mainly due to decreases in arrivals for January and March. The summer period which accounted for 61.2 percent of total arrivals had appreciable growth of 10.0 percent.

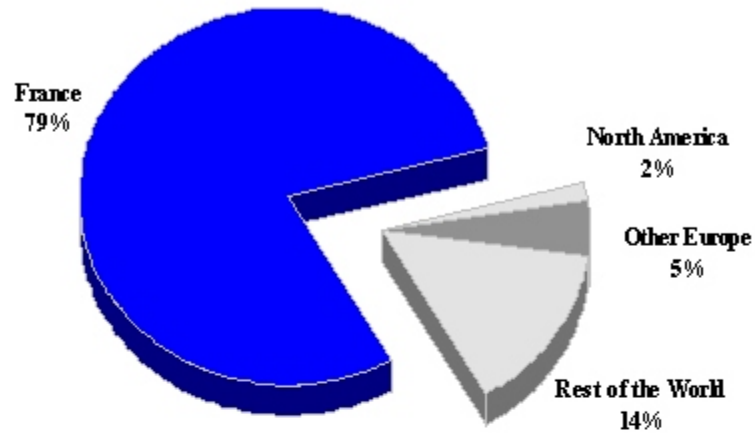
- ◆ In 2004, arrivals from France numbered 373.3 thousand accounting for almost 80.0 percent of total arrivals. This number was 4.5 percent higher than the total in 2003. The French territories arrivals made-up 11.5 percent of all arrivals; rose by 5.4 percent to 54.1 thousand arrivals- close to the levels of the late 1990's. Increases were also recorded in smaller markets - Other European countries, the United States and Canada rose by 5.4 percent, 35.6 percent and 16.4 percent respectively. For the second consecutive year fewer tourists from the Non-French Caribbean as well as the Rest of the World visited this destination.
- ◆ Despite a marginal increase(0.9 percent) in cruise calls for 2004, cruise passenger arrivals totaled 159.4 thousands, a decline of 40.6 percent when compared to 2003. The number of arriving passengers declined in each month of the year when compared to the corresponding month of 2003.

TOURISM HIGHLIGHTS FOR 2004

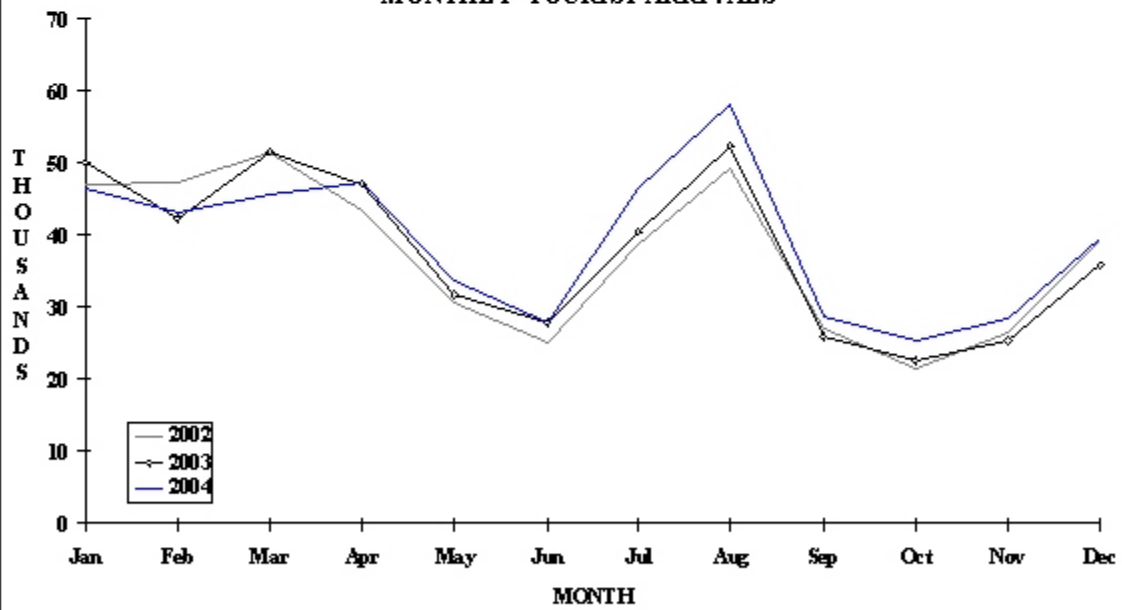
VISITOR ARRIVALS			
Tourist Arrivals →	470,890	Cruise Passengers	159,416
➔ <i>Summer</i>	61.2%	➔ <i>Summer</i>	42.2%
➔ <i>Winter</i>	38.8%	➔ <i>Winter</i>	57.8%
		Cruise Ship Calls	220
VISITOR PROFILE			
Average Length of Stay (<i>nights</i>)	14.4	Tourist Arrivals by Place of Stay	
Tourist Arrivals by Purpose of Visit		➔ <i>Hotels</i>	36.6%
➔ <i>Holiday</i>	84.3%	➔ <i>Guest Houses/Apartments</i>	26.9%
➔ <i>Business</i>	12.4%	➔ <i>Private</i>	26.3%
➔ <i>Other</i>	3.3%	➔ <i>Others</i>	10.2%
TOURISM AND OTHER RELATED ECONOMIC STATISTICS			
Total Expenditure (<i>US\$ millions</i>)	\$291.0	Tourism Budget (<i>US\$ '000</i>) ^{VIII}	\$7,540
ACCOMMODATION STATISTICS		SOCIO-ECONOMIC STATISTICS	
Rooms ^I	8,298	Land Area (<i>square Kilometres</i>)	1,060
Room Occupancy Rates	51.8%	Population (<i>thousand mid year 2003</i>)	391.0

MARTINIQUE

TOURIST ARRIVALS BY MAIN MARKETS
2004



MONTHLY TOURIST ARRIVALS



TOURIST ARRIVALS BY COUNTRY OF RESIDENCE

Country of Residence	2000	2001	2002	2003	% Share	
					2004	2004
United States	5074	2216	4238	2557	3468	0.7
Canada	5425	1945	4474	2584	3008	0.6
France	418535	384355	349212	357726	373678	79.4
Other Europe	24511	18962	22765	22198	22461	4.8
D.O.M. *	54962	41647	42960	51288	54050	11.5
Other C'bean	11889	7378	15426	12826	10446	2.2
Other Countries	5894	3880	7624	3981	3779	0.8
TOTAL	526290	460383	446699	453160	470890	100.0

*French overseas departments and territories (mainly Guadeloupe)

MONTHLY TOURIST ARRIVALS*

Month	2000	2001	2002	2003	% Change	
					2004	2004/03
January	53587	45253	47005	50019	46320	-7.4
February	52889	46701	47168	42326	43244	2.2
March	59345	58929	51572	51607	45712	-11.4
April	61691	54965	43311	47090	47241	0.3
May	34115	40570	30625	31809	33573	5.5
June	31386	30125	25131	27819	27771	-0.2
July	44212	28129	38662	40380	46439	15.0
August	55373	46519	49167	52356	58245	11.2
September	31084	24629	26890	25883	28784	11.2
October	23459	21467	21357	22631	25456	12.5
November	28204	26180	26516	25451	28547	12.2
December	50945	36916	39285	35789	39558	10.5
TOTAL	526290	460383	446689	453160	470890	3.9

MARTINIQUE

CRUISE PASSENGER ARRIVALS

Month	2000	2001	2002	2003	% Change	
					2004	2004/03
January	41964	34678	24717	31771	26965	-15.1
February	45202	28938	18274	31301	23027	-26.4
March	41248	38313	11139	29995	28573	-4.7
April	27864	20586	12386	30354	13502	-55.5
May	14132	-	14683	9095	4160	-54.3
June	9956	6877	13063	12748	4444	-65.1
July	10005	6469	9357	15154	2896	-80.9
August	12369	6540	12201	11916	2654	-77.7
September	8902	5516	3262	14166	1995	-85.9
October	16101	11329	18560	15849	4528	-71.4
November	28396	21622	25597	23953	19644	-18.0
December	30102	21553	37608	42240	27028	-36.0
TOTAL	286241	202421	200847	268542	159416	-40.6

Cruise Calls	281	234	206	218	220
--------------	-----	-----	-----	-----	-----

TOURIST ACCOMMODATION (Rooms)

Rooms	2000	2001	2002	2003	2004
Total	8733	8733	n.a	8298	n.a

Source: Agence Regionale de Developpement Touristique de la Martinique (ARDTM)

**THE MEXICAN CARIBBEAN
(CANCUN, COZUMEL RIVERA MAYA)**

Visitor Arrival Summary

The Mexican Caribbean destinations have emerged in the last decade to be major players in Caribbean tourism. Cancun, Cozumel and now Rivera Maya are resort destinations which rely heavily on the US market and are now extending their share of the European market.

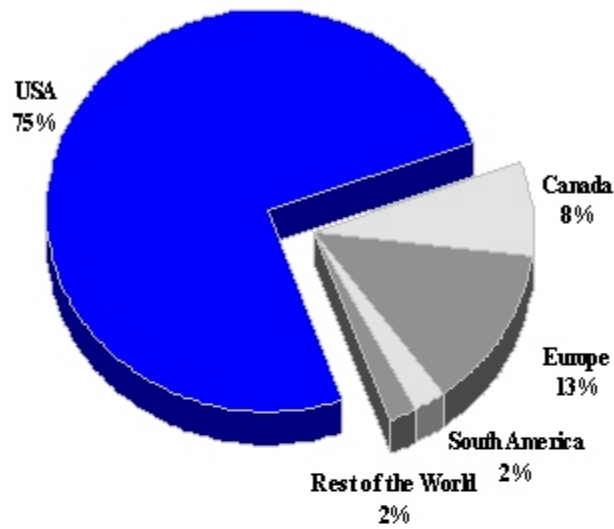
- ◆ **Cancun:** International tourist arrivals to Cancun registered a robust increase of 12.2 percent in 2004 to total 2,331.4 thousand. All markets registered doubled-digit increases and each month's performance was better than the corresponding month's in 2003. The United States (75.1 percent of the total) roes by 10.1 percent while Europe and Canada increased by 17.4 percent and 25.2 percent respectively.
- ◆ **Cozumel:** Total international tourist arrivals to Cozumel in 2004 were 368.6 thousand, increasing by 5.7 percent over 2003. There were three fewer cruise ship calls (1032) in 2004. However, the number of cruise passengers brought in were 56.7 percent more. Total cruise passengers arrivals in 2004 were 2,862.0 thousand.
- ◆ **Rivera Maya:** Total tourist arrivals for Rivera Maya in 2004 were 2,166.2 thousand. The main market for tourists into this destination was the United States (47.4 percent of total arrivals) which grew by 25.6 percent. Significant growth of 22.9 percent was recorded in arrivals from Europe. The performances in Canada and South America were moderate increases of 5.0 percent and 8.9 percent respectively.

TOURISM HIGHLIGHTS FOR 2004

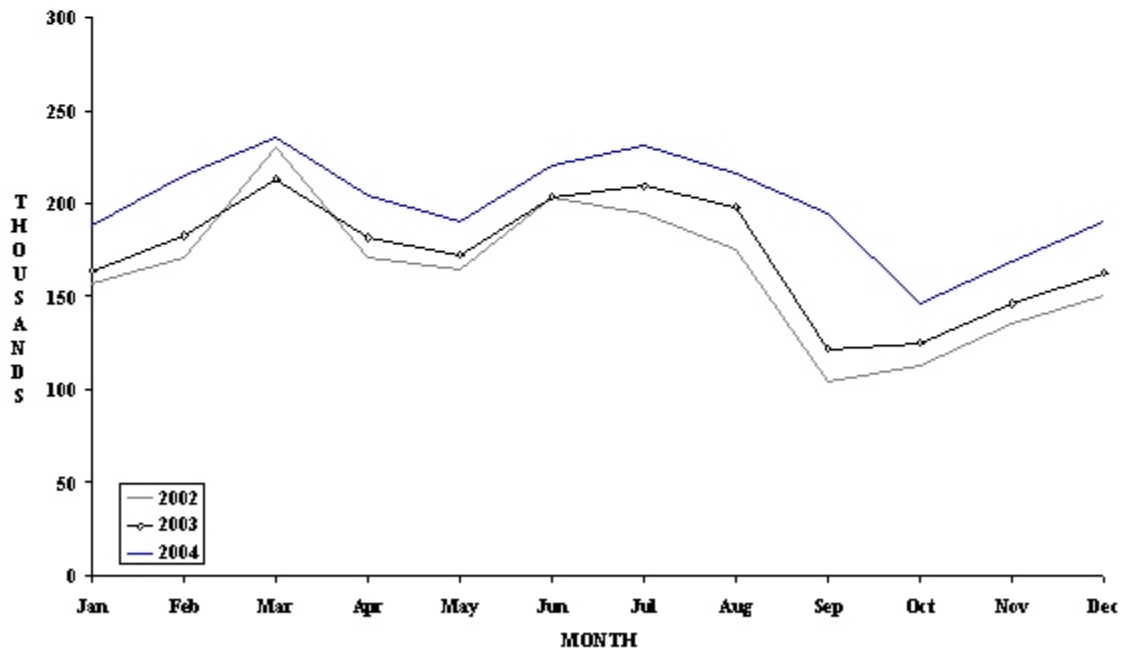
VISITOR ARRIVALS			
Cancun - Tourist Arrivals ➔	2,331,362	Cozumel - Cruise Passengers	2,862,039
➔ <i>Summer</i>	63.9%	➔ <i>Summer</i>	58.4%
➔ <i>Winter</i>	36.1%	➔ <i>Winter</i>	41.6%
Cozumel - Tourist Arrivals ➔	368,589	Cruise Ship Calls	1,302
Rivera Maya - Tourist Arrivals ➔	2,166,168		
VISITOR PROFILE		ACCOMMODATION STATISTICS	
Average Length of Stay (<i>nights</i>)		Cancun -Rooms	27,522
(<i>Cancun</i>)	4.6	Room Occupancy Rates	76.4%
(<i>Rivera Maya</i>) ^I	6.5	Cozumel - Rooms	3,738
Cancun		Room Occupancy Rates	41.9%
Tourist Arrivals by Purpose of Visit ^{VII}		Rivera Maya - Rooms ^I	22,624
➔ <i>Holiday</i>	93.0%	Room Occupancy Rates ^I	77.0%
➔ <i>Business</i>	5.0%		
➔ <i>Other</i>	2.0%		
TOURISM AND OTHER RELATED ECONOMIC STATISTICS			
Total Expenditure (<i>US\$ millions</i>) Cancun	\$1,483.1	Total Expenditure (<i>US\$ millions</i>) Cozumel	\$454.9

Mexico (Cancun)

**TOURIST ARRIVALS BY MAIN MARKETS
2004**



MONTHLY TOURIST ARRIVALS



MEXICAN CARIBBEAN - (CANCUN)

CANCUN - FOREIGN HOTEL GUEST BY COUNTRY OF ORIGIN

Country of Residence						% Share	
	2000	2001	2002	2003	2004	2004	
United States	1751005	1619767	1479618	1590204	1750945	75.1	
Canada	91336	86814	119411	139285	174447	7.5	
Europe	282465	335687	265175	255558	299943	12.9	
South America	102404	96087	62622	50169	56803	2.4	
Central America	5904	10350	10555	9757	11116	0.5	
Caribbean	5222	5734	8117	6176	7736	0.3	
Japan	12923	20889	14723	16380	19589	0.8	
Rest of the World	4028	3387	5224	9444	10783	0.5	
TOTAL	2255287	2178715	1965445	2076973	2331362	100.0	

CANCUN - FOREIGN HOTEL GUEST BY MONTH

Month						% Change	
	2000	2001	2002	2003	2004	2004/03	
January	154160	184286	156215	163389	187717	14.9	
February	199094	188824	171073	182444	214571	17.6	
March	274492	296760	229614	213061	235235	10.4	
April	191079	211090	170418	181204	204430	12.8	
May	194231	194630	163830	172325	189577	10.0	
June	225817	220111	203360	203412	219535	7.9	
July	205000	205248	193867	209545	230646	10.1	
August	201221	186968	175542	197557	215937	9.3	
September	142492	122506	103709	121219	129305	6.7	
October	149424	115725	112172	124603	146009	17.2	
November	158377	121907	135564	145849	168439	15.5	
December	159900	130660	150081	162365	189961	17.0	
TOTAL	2255287	2178715	1965445	2076973	2331362	12.2	

MEXICAN CARIBBEAN - (COZUMEL)

COZUMEL - TOTAL TOURIST ARRIVALS

	2000	2001	2002	2003	2004	% Share 2004
National Tourists	198715	215122	153386	60554	50009	11.9
Foreign Tourists	230017	240499	205585	304233	368589	88.1
TOTAL	428732	455621	358971	364787	418598	100.0

COZUMEL - CRUISE PASSENGER ARRIVALS

Month	2000	2001	2002	2003	2004	% Change 2004/03
January	137658	158293	200450	277516	307610	10.8
February	148771	134730	154963	238823	264970	10.9
March	173193	165557	213242	277583	325866	17.4
April	133366	139557	187374	256749	291170	13.4
May	101255	115208	171193	183810	174610	-5.0
June	101296	117097	166168	175847	180505	2.6
July	95802	117274	190061	185495	194186	4.7
August	111308	112502	185584	196417	169837	-13.5
September	88245	88647	135559	158770	181530	14.3
October	102351	104736	177870	218870	179036	-18.2
November	154540	159722	159722	240207	271730	13.1
December	156819	182044	285504	298826	320989	7.4
TOTAL	1504604	1595367	2227690	2708913	2862039	5.7
Cruise Ship Calls	885	795	1168	1305	1302	

MONTSERRAT

Visitor Summary

Tourist arrivals to Montserrat increased by 20.8 percent to reach 10.1 thousand in 2004. This was the first increase since 2000 (the only other year for which arrivals surpassed the 10.0 thousand). Arrivals increased in each month of the year, except for June, when compared to the corresponding month in 2003.

- ◆ All major markets recorded encouraging growth in 2004. The Caribbean contributed almost a quarter of all arrivals to this destination and grew by 7.7 percent. Tourist arrivals from United States and Europe registered increases in the range of 35.2 percent and 32.4 percent respectively. Canadian tourists visiting this destination although these are in small numbers, rose by 12.5 percent in 2004 when compared to 2003.

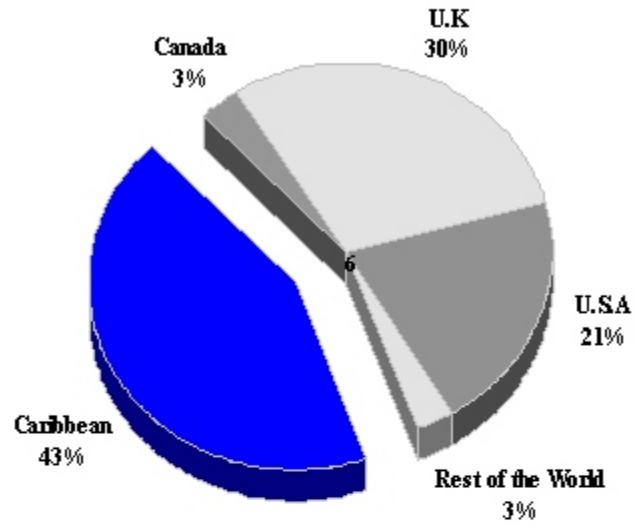
TOURISM HIGHLIGHTS FOR 2004

VISITOR ARRIVALS			
Tourist Arrivals ➔	10,138	Total Rooms	344
➔ <i>Summer</i>	70.8%		
➔ <i>Winter</i>	29.2%		
VISITOR PROFILE			
Average Length of Stay (<i>nights</i>)	15.9	Tourist Arrivals by Place of Stay	
Tourist Arrivals by Purpose of Visit		➔ <i>Hotels</i>	10.1%
➔ <i>Holiday</i>	76.4%	➔ <i>Apartment/Villas</i>	6.9%
➔ <i>Business</i>	17.4%	➔ <i>Private</i>	79.2%
➔ <i>Other</i>	6.2%	➔ <i>Other</i>	3.8%
TOURISM AND OTHER RELATED ECONOMIC STATISTICS			
Total Expenditure (<i>US\$ millions</i>)	\$8.6	GDP at Factor Cost (<i>US\$ millions</i>)	\$30.6
Tourism Budget (<i>US\$ 'thousands</i>) ^{b1}	\$269	Consumer Price Index (<i>%ch. 2004/'03</i>)	3.0%
		Hotel & Restaurant contribution to GDP	0.9%
SOCIO-ECONOMIC STATISTICS			
Population (<i>thousand mid year 2004</i>)	4.7	Land Area (<i>square Kilometres</i>)	102

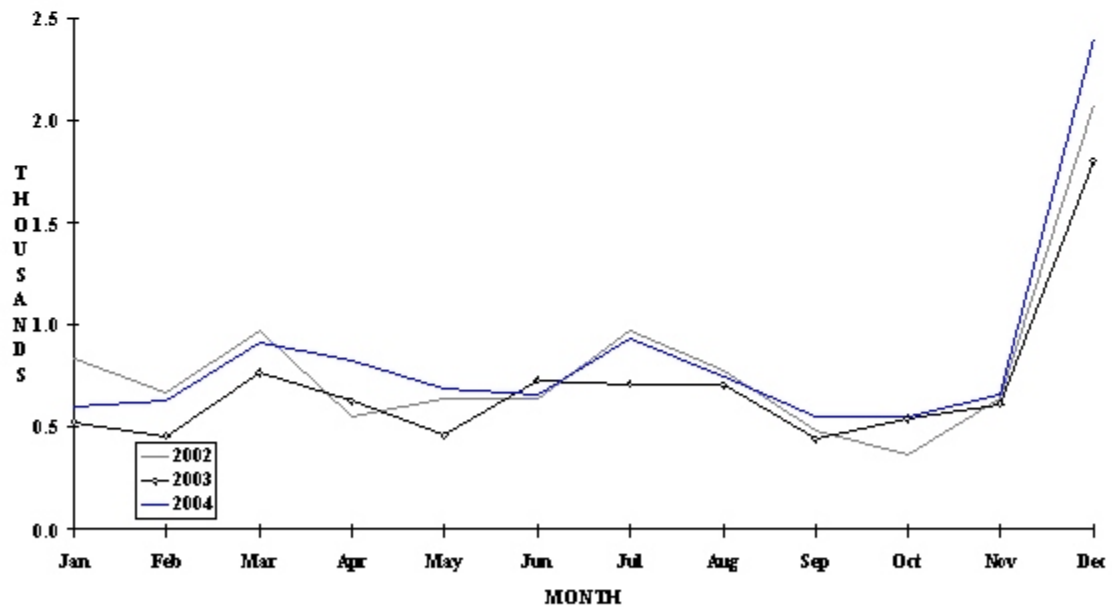
MONTSERRAT

TOURIST ARRIVALS BY MAIN MARKETS

2004



MONTHLY TOURIST ARRIVALS



MONTserrat

TOURIST ARRIVALS BY COUNTRY OF RESIDENCE

Country of Residence	2000	2001	2002	2003	% Share	
					2004	2004
United States	1561	1652	1950	1541	2084	20.6
Canada	346	368	375	297	334	3.3
United Kingdom	2592	2419	2581	2269	3021	29.8
Other Europe	61	121	178	145	176	1.7
OECS	3515	3258	3282	2849	3051	30.1
Other Caribbean	1790	1865	1171	1224	1334	13.2
Rest of World	472	117	86	65	138	1.4
TOTAL	10337	9800	9623	8390	10138	100.0

MONTHLY TOURIST ARRIVALS

Month	2000	2001	2002	2003	% Change	
					2004	2004/03
January	791	691	838	527	597	13.3
February	778	602	664	457	634	38.7
March	836	892	976	768	910	18.5
April	886	926	548	628	824	31.2
May	650	597	645	462	683	47.8
June	815	908	640	733	656	-10.5
July	1141	966	972	712	932	30.9
August	845	924	770	706	753	6.7
September	660	515	479	442	545	23.3
October	519	544	369	542	547	0.9
November	755	710	643	612	653	6.7
December	1661	1525	2079	1801	2404	33.5
TOTAL	10337	9800	9623	8390	10138	20.8

¹ Source: Estimates given by the Statistical Department, Montserrat

TOURIST ACCOMMODATION (Rooms)

Type of Accommodation	2000	2001	2002	2003	2004
Hotels	-	36	40	n.a	40
Apartments	-	-	-	n.a	42
Villas	-	190	217	n.a	239
Other	-	16	-	n.a	23
TOTAL	264	242	257	n.a	344

Sources: Department of Tourism, Department of Statistics

PUERTO RICO

Visitor Arrival Summary

The Puerto Rico Tourism Company provides information on hotel registrations in Puerto Rico. This data represents around one third of the total tourist to Puerto Rico. Official tourist arrivals data for this destination is available only for fiscal years which run from July-June. These estimates are provided by the Puerto Rico Planning Board. CTO in section three of the report has estimated a calendar total for tourist arrivals to Puerto Rico to facilitate the comparative analysis of the Caribbean tourism performance.

Based on the official estimates provided by the Puerto Rico Planning Board, 3,541.0 thousand tourists visited this destination in the fiscal year 2003/04, 9.3 percent more than the 3,238.4 thousand in fiscal year 2002/03.

- ◆ Some 87.2 percent of reported foreign hotel registrations in 2004 were persons from the United States, representing an increase of 7.2 percent over 2003. Reported registrations of Europeans and Canadians rose by 23.9 percent and 54.1 percent respectively. Hotel registrations from the Caribbean market were at the highest recorded level in 2004, with 51.8 thousand, 11.7 percent more than in the previous year.
- ◆ Puerto Rico registered an increase of 11.9 percent in cruise passenger arrivals for 2004, reaching a total of 1,381.4 thousand.

TOURISM HIGHLIGHTS FOR 2004

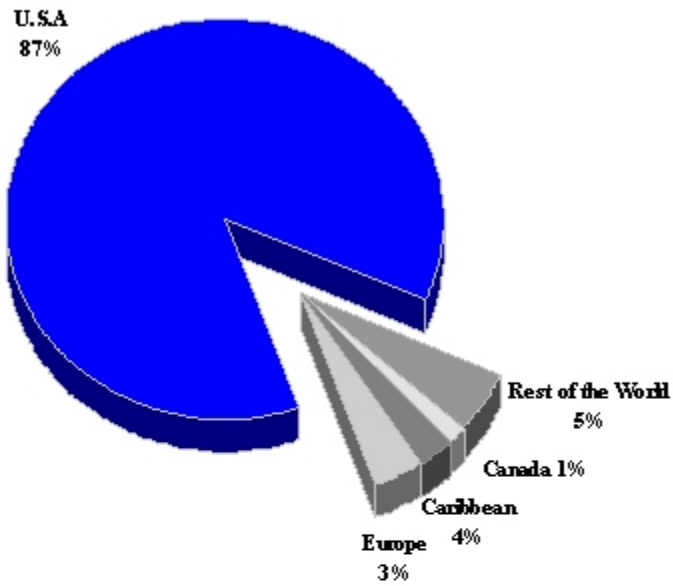
VISITOR ARRIVALS			
Tourist Arrivals ^e ('000) ✈	3,684,108	Cruise Passengers	1,381,411
➤ Summer *	61.8%	➤ Summer	56.5%
➤ Winter *	38.2%	➤ Winter	43.5%
		Cruise Calls	639
ACCOMMODATION STATISTICS		VISITOR PROFILE	
Hotel Registrations	1,411,905	Average Length of Stay (nights)	2.5
Rooms ^{III}	12,753	Tourist Arrivals by Place of Stay	
Room Occupancy Rates	68.5%	➤ Hotels & Guest House	36.9%
		➤ Private/Unregistered/Other	63.1%
TOURISM AND OTHER RELATED SOCIO-ECONOMIC STATISTICS			
Total Expenditure (US\$ millions)	\$3,024.1	Tourism Budget (US\$ '000's) ^F	\$88,023
Hotel & Restaurant contribution to GDP	0.9%	GDP at Factor Cost (US\$ millions)	\$78,362.4
Consumer Price Index (% ch. 2004/'03)	11.9%	Land Area (square Kilometres)	8,874.7
		Population (thousand mid year 2004)	3,895.0

^F - fiscal estimate July 2003 - June 2004

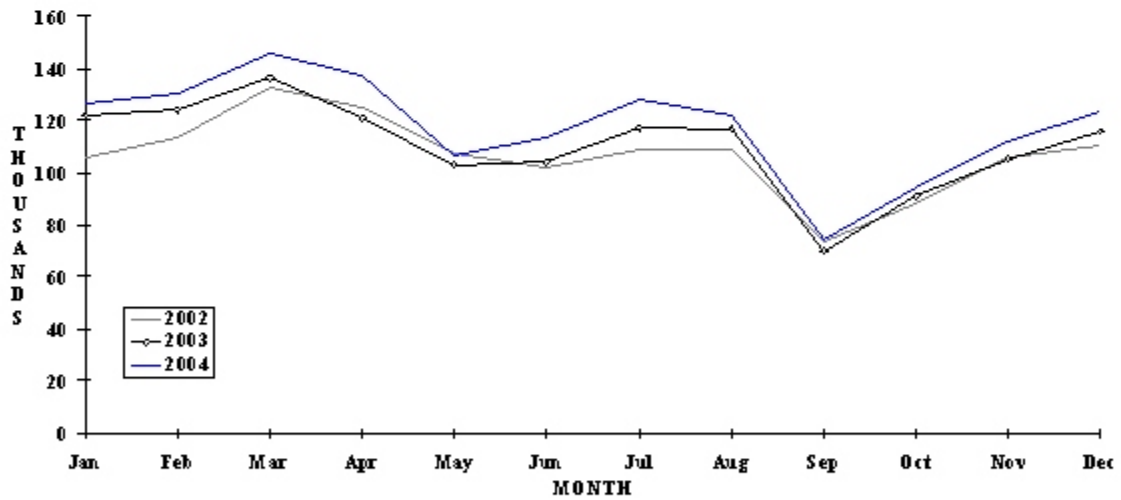
* Seasonal distribution based on reported hotel registrations of non-residents only.

PUERTO RICO

**HOTEL REGISTRATIONS BY MAIN MARKETS
2004**



MONTHLY HOTEL REGISTRATIONS



VISITOR ARRIVALS BY CATEGORY (FISCAL YEAR - JULY TO JUNE)

	2000	2001	2002	2003	2004
Total Tourist	3341.4	3551.2	3087.1	3238.4	3541.0
Same Day Arrivals	1224.6	1356.6	1277.0	1163.9	1348.2
Total	4566.0	4907.8	4364.1	4402.3	4889.2

Source: The Puerto Rico Planning Board

**NON-RESIDENT HOTEL REGISTRATIONS* BY MAIN COUNTRY OF RESIDENCE
(Calendar Years)**

Country of Residence	2000	2001 ^r	2002	2003	2004	% Share 2004
United States	980037	1033561	1108249	1148426	1231143	87.2
Canada	12638	14778	12230	13285	20473	1.5
Europe	28505	37271	28866	29607	36673	2.6
Caribbean	46745	43626	40794	46429	51878	3.7
Other Countries**	110942	89662	90011	84494	71738	5.1
TOTAL	1178867	1218898	1280150	1322241	1411905	100.0

** Includes hotels which did not report the origin of guests

MONTHLY HOTEL REGISTRATIONS * BY NON-RESIDENTS

Month	2000	2001 ^r	2002	2003	2004	% Change 2004/03
January	98933	114236	105638	122481	126368	3.2
February	112468	113658	113371	124007	130803	5.5
March	117275	140832	132651	136126	145505	6.9
April	112745	126131	124715	120742	136796	13.3
May	96233	108947	106764	101745	106115	4.3
June	85525	96158	101757	104255	113132	8.5
July	97074	101925	109026	113994	127921	12.2
August	98338	100747	108590	115075	121761	5.8
September	68817	54745	73726	69882	74248	6.2
October	82343	69703	87838	90699	94348	4.0
November	101515	88716	105703	107069	111505	4.1
December	107601	103100	110371	116166	123403	6.2
TOTAL	1178867	1218898	1280150	1322241	1411905	6.8

* Reporting hotels only; Includes Paradores (County Inns) but excludes condominiums; also excludes airline crew members

PUERTO RICO

CRUISE PASSENGER ARRIVALS

Month					% Change	
	2004	2001	2002	2003	2004	2004/03
January	153420	175624	160021	120898	156025	29.1
February	142663	153539	141684	124298	153497	23.5
March	152025	164396	151647	144815	159024	9.8
April	142128	153221	117476	126909	132145	4.1
May	64639	58742	56742	63159	88686	40.4
June	60011	64127	67576	75093	78966	5.2
July	60941	71480	71232	67761	73078	7.8
August	58754	69940	60940	73264	79358	8.3
September	61302	57336	51075	62384	58417	-6.4
October	91589	90487	77302	80337	86019	7.1
November	143795	136347	101750	143142	150480	5.1
December	170589	155565	146466	152932	165716	8.4
TOTAL	1301856	1350804	1203911	1234992	1381411	11.9

Other Cruise Statistics

	Fiscal Year*					
	1998/99	1999/00	2000/01	2001/02	2002/03	2003/04
Total Passengers*	1195705	1220909	1356619	1276301	1164199	1348675
Cruise Ship calls	677	689	680	625	588	639

TOURIST ACCOMMODATION (Rooms)**

Type of Accommodation	CALENDAR YEAR				
	2000	2001	2002	2003	2004
Hotels	9787	9973	10157	10195	n.a
Guest Houses	407	450	505	520	n.a
Paradores	957	963	1061	1097	n.a
Other	777	967	1045	1045	n.a
TOTAL	11928	12353	12768	12857	n.a

* Fiscal year (July to June)

** Hotels endorsed by Puerto Rico Tourism Company only; as at end June

Source: Commonwealth of Puerto Rico Tourism Company.

SABA

Visitor Arrival Summary

Saba hosted 1.8 thousand or 8.3 percent more visitors in 2004 than in the previous year. Total visitor arrivals were 23.2 thousand. Arrivals by air and by sea increased by approximately 7.3 percent while the number of same-day visitors to this destination rose by 9.2 percent when compared to 2003.

- ◆ There were mixed performances in the main markets in 2004. The United States, (37.9 percent of the total), the most important market for this destination, registered an increase of 14.1 percent in tourist arrivals. Growth was noted from the Netherlands; France and Canada of 2.3 percent; 36.7 percent and 31.6 percent respectively. Tourist arrivals from the United Kingdom declined by 6.1 percent. The other countries not specified also showed less arrivals in 2004.

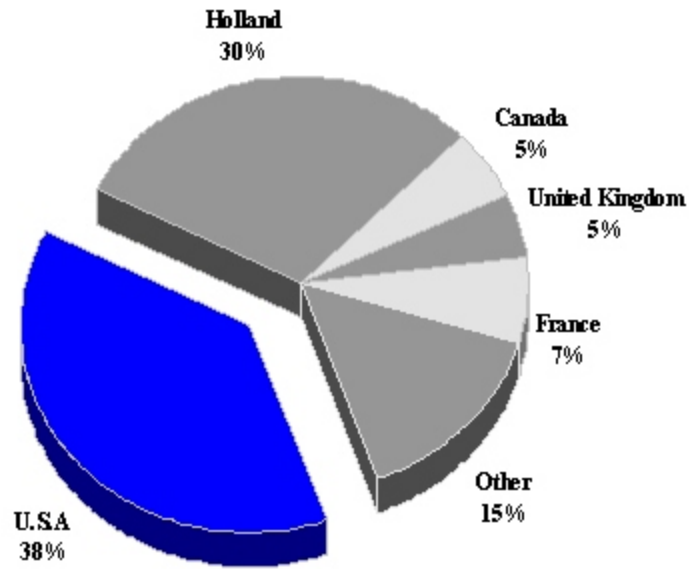
TOURISM HIGHLIGHTS FOR 2004

VISITOR ARRIVALS			
Tourist Arrivals ➔	11,012	Same Day Visitors	12,149
➔ <i>Summer</i>	63.6%		
➔ <i>Winter</i>	36.4%		
ACCOMMODATION STATISTICS		SOCIO-ECONOMIC STATISTICS	
Rooms ^{II}	85	Tourism Budget (US\$ '000) ^{VI}	\$274
		Land Area (square Kilometres)	13
		Population (thousand mid year 2002)	1.4

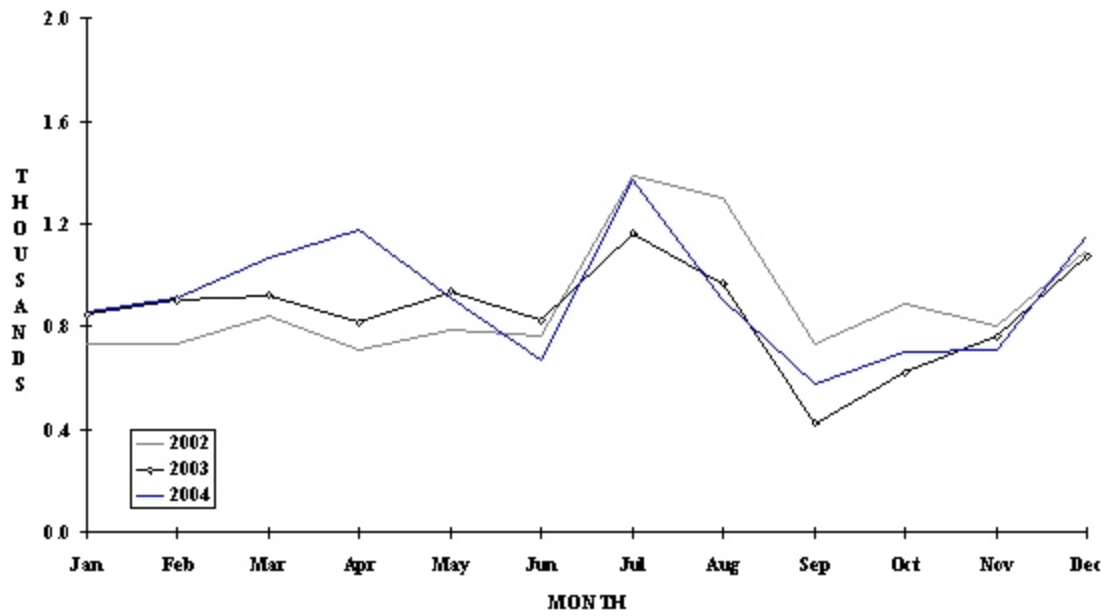
SABA

TOURIST ARRIVALS BY MAIN MARKETS

2004



MONTHLY TOURIST ARRIVALS



VISITOR ARRIVALS BY CATEGORY

Category	2000	2001	2002	2003	% Share	
					2004	2004
Air Arrival Tourists	6236	5894	7921	6790	7291	31.5
Same-day visitors*	15287	9647	6614	11130	12149	52.5
Sea Tourists	2884	3111	2857	3471	3721	16.1
TOTAL	24407	18652	17392	21391	23161	100.0

* Mainly day trippers from St Maarten

TOURIST ARRIVALS BY COUNTRY OF RESIDENCE

Country of Residence *	2000	2001	2002	2003	% Share	
					2004	2004
Holland/Antilles	2618	2658	3233	3245	3320	30.1
United States	3740	3452	3741	3656	4172	37.9
Canada	337	401	639	450	592	5.4
United Kingdom	414	353	479	591	555	5.0
France	434	453	573	551	753	6.8
Other Countries	1577	1688	2113	1768	1620	14.7
TOTAL	9120	9005	10778	10261	11012	100.0

* Nationality is used as a proxy

MONTHLY TOURIST ARRIVALS

Month	2000	2001	2002	2003	% Change	
					2004	2004/03
January	668	833	737	844	857	1.5
February	850	759	733	904	908	0.4
March	1027	856	843	923	1065	15.4
April	897	822	710	818	1179	44.1
May	729	654	787	939	911	-3.0
June	685	861	763	826	671	-18.8
July	1074	1256	1385	1162	1369	17.8
August	597	684	1302	968	906	-6.4
September	472	440	730	424	581	37.0
October	488	508	890	620	704	13.5
November	781	579	803	761	707	-7.1
December	852	753	1095	1072	1154	7.6
TOTAL	9120	9005	10778	10261	11012	7.3

**Includes other visitors*

TOURIST ACCOMMODATION (Rooms)

Rooms	2000	2001	2002	2003	2004
	80	85	n.a	n.a	n.a

Source: Saba Tourist Bureau

ST KITTS AND NEVIS

Visitor Arrival Summary

Total arrivals to St. Kitts and Nevis in 2004 increased for the second consecutive year, this time by 33.1 percent over 2003, to reach 91.8 thousand. Monthly arrival data was unavailable .

- ◆ Tourist arrivals from all the major markets registered substantial growth in 2004. Arrivals from the United States totaled 52.3 thousand, accounting for 57.0 percent of all arrivals and grew by 49.7 percent when compared to the 35.0 thousand in 2003. Tourists from Continental Europe and Canada grew by 25.5 percent and 17.8 percent respectively. Caribbean markets also responded favorable; with the OECS territories (up 7.5 percent); Other Caricom (up 25.0 percent) and Netherlands Antilles (up 10.6 percent) all sending more tourists.

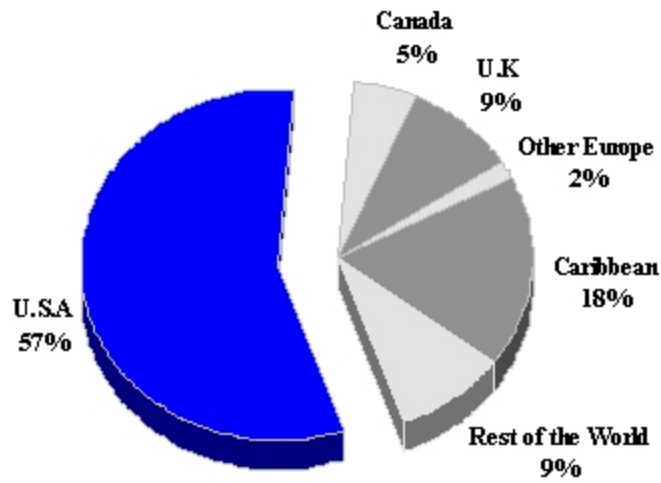
- ◆ Cruise passenger arrivals data was available.

TOURISM HIGHLIGHTS FOR 2004

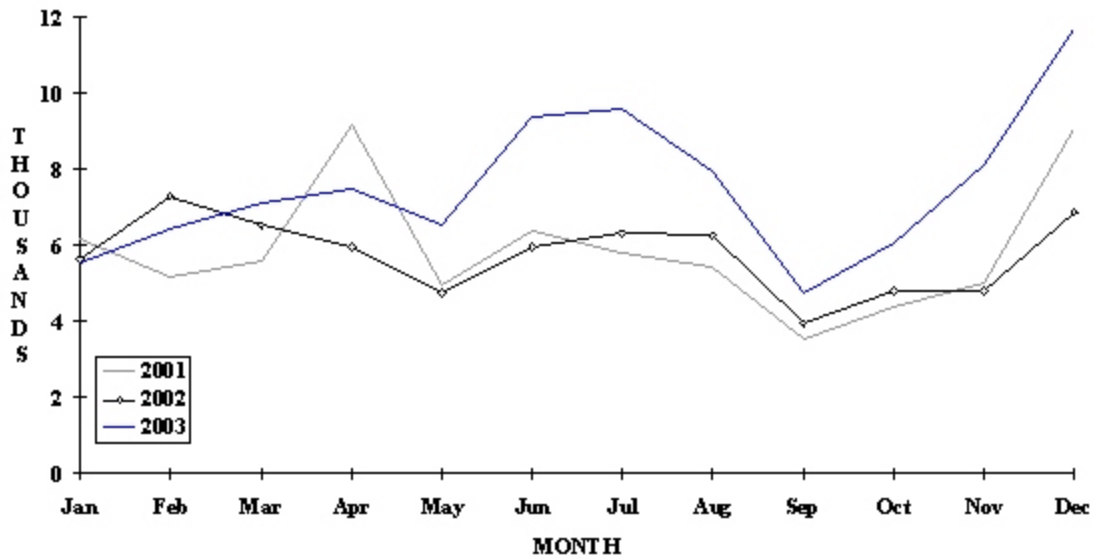
VISITOR ARRIVALS			
Tourist Arrivals ➤	91,769	Cruise Passengers ^I	150,429
➤ <i>Summer</i>	n.a	➤ <i>Summer</i>	52.2%
➤ <i>Winter</i>	n.a	➤ <i>Winter</i>	47.8%
		Cruise Ship Calls ^I	281
VISITOR PROFILE			
Average Length of Stay (<i>nights</i>) ^{III}	9.6	Tourist Arrivals by Place of Stay^{III}	
Tourist Arrivals by Purpose of Visit^{III}		➤ <i>Hotels</i>	49.9%
➤ <i>Holiday</i>	89.8%	➤ <i>Apartment/Villas</i>	4.3%
➤ <i>Business</i>	9.6%	➤ <i>Private</i>	40.9%
➤ <i>Other</i>	0.6%	➤ <i>Other</i>	4.9%
TOURISM AND OTHER RELATED ECONOMIC STATISTICS			
Total Expenditure (<i>US\$ millions</i>)	\$106.9	GDP at Factor Cost (<i>US\$ millions</i>)	\$326.8
Tourism Budget (<i>US\$ 000</i>) ^{IV b}	\$3,238	Consumer Price Index (% <i>ch.</i> 2004/'03)	2.3%
Hotel and Restaurant contribution to GDP	8.5%		
ACCOMMODATION STATISTICS		SOCIO-ECONOMIC STATISTICS	
Rooms ^V	1,754	Land Area (<i>square Kilometres</i>)	269
		Population (<i>thousand mid year 2004</i>)	47.9

ST. KITTS & NEVIS

TOURIST ARRIVALS BY MAIN MARKETS 2004



MONTHLY TOURIST ARRIVALS



ST KITTS AND NEVIS

TOURIST ARRIVALS BY COUNTRY OF RESIDENCE

Country of Residence	2000	2001	2002	2003	% Share	
					2004	2004
United States	23474	25558	27525	34962	52341	57.0
Canada	5395	5237	4352	3979	4688	5.1
United Kingdom	12841	8726	5464	6776	8502	9.3
Other Europe	1543	1730	n.a	1244	1563	1.7
OECS	6244	7294	n.a	9852	10595	11.5
Other CARICOM	5441	4569	n.a	2395	2993	3.3
U.S. Virgin Islands	5862	5509	n.a	n.a	n.a	-
Netherlands Antilles	3721	3592	n.a	2370	2622	2.9
Rest of World	8628	8350	30190	7382	8465	9.2
TOTAL	73149	70565	67531	68960	91769	100.0

MONTHLY TOURIST ARRIVALS

Month	2000	2001	2002	*2003	%Change	
					2004	2004/03
January	6463	6173	5611	5526	n.a	-100.0
February	6778	5150	7287	6408	n.a	-100.0
March	6434	5582	6521	7115	n.a	-100.0
April	5252	9182	5952	7492	n.a	-100.0
May	4170	4960	4744	6515	n.a	-100.0
June	4805	6385	5938	9373	n.a	-100.0
July	6607	5791	6299	9569	n.a	-100.0
August	8717	5409	6250	7944	n.a	-100.0
September	3496	3542	3935	4743	n.a	-100.0
October	4693	4399	4790	6073	n.a	-100.0
November	6384	4985	4809	8103	n.a	-100.0
December	9350	9007	6862	11702	n.a	-100.0
TOTAL	73149	70565	68998	90563	n.a	-100.0

* include same-day visitors

