

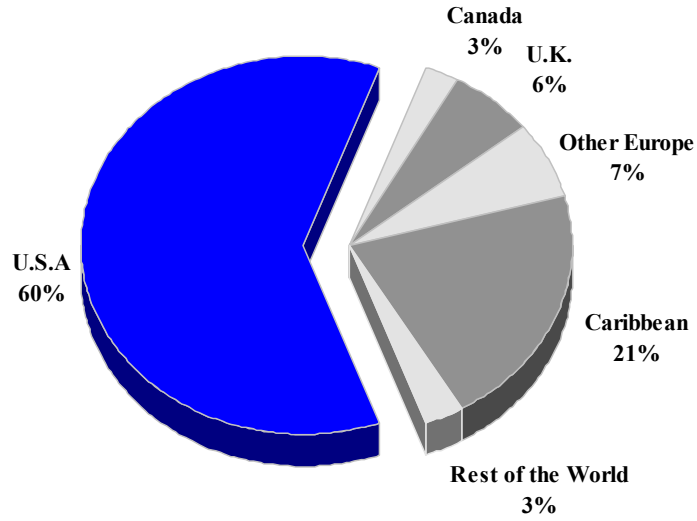
## ANGUILLA

### TOURISM HIGHLIGHTS FOR 2006

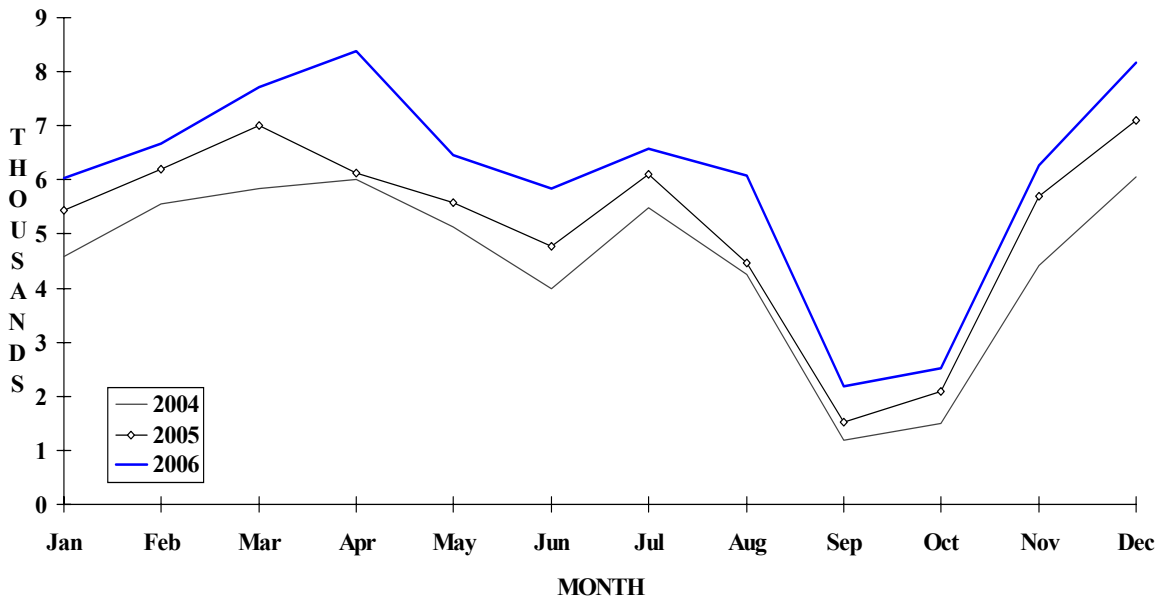
VISITOR ARRIVALS			
Tourist Arrivals ✈ ➡ <i>Winter</i> ➡ <i>Summer</i>	72,962 39.9% 60.1%	Same Day Visitors	94,283
VISITOR PROFILE			
Average Length of Stay ( <i>nights</i> ) <sup>1</sup>	8.0	<b>Tourist Arrivals by Purpose of Visit</b> ➡ <i>Holiday</i> ➡ <i>Business</i>	92.2% 7.8%
TOURISM AND OTHER RELATED ECONOMIC STATISTICS			
Average Daily Expenditure ( <i>US\$</i> ) <sup>V</sup> ➡ <i>Winter</i> ➡ <i>Summer</i>	\$213.81 \$154.49	Visitor Expenditure ( <i>US\$ millions</i> ) GDP at Factor Cost ( <i>US\$ millions</i> ) Consumer Price Index (% <i>ch. 2004/'03</i> )	\$69.4 \$108.9 5.1%
Tourism Budgets ( <i>US\$ thousands</i> ) <sup>V</sup>	\$819	Hotel and Restaurant contribution to GDP	28.5%
ACCOMMODATION STATISTICS		SOCIO-ECONOMIC STATISTICS	
Rooms Occupancy rate <sup>1</sup>	756 41.9%	Land Area ( <i>square Kilometres</i> ) Population ( <i>thousand, mid year 2004</i> )	91 12.5

# ANGUILLA

**TOURIST ARRIVALS BY MAIN MARKETS  
2006**



**MONTHLY TOURIST ARRIVALS**



ANGUILLA

VISITOR ARRIVALS BY CATEGORY

Category	2002	2003	2004	2005	%Share	
					2006	2006
Tourists	43969	46915	53987	62084	72962	43.6
Same-day visitors	67149	62367	66801	81102	94283	56.4
<b>TOTAL</b>	<b>111118</b>	<b>109282</b>	<b>120788</b>	<b>143186</b>	<b>167245</b>	<b>100.0</b>
By Sea	81464	80951	96835	111169	133794	80.0
By Air	29654	28331	23953	32017	33451	20.0

TOURIST ARRIVALS BY COUNTRY OF RESIDENCE

Country of Residence	2002	2003	2004	2005	%Share	
					2006	2006
U.S.A.	28755	30644	35751	41733	44489	61.0
Canada	1301	1289	1549	1792	1977	2.7
United Kingdom	2529	2962	3198	3834	4344	6.0
Other Europe	2854	3346	4469	4279	4874	6.7
Caribbean	7455	7362	7499	8529	15280	20.9
Other	1075	1312	1521	1917	1998	2.7
<b>TOTAL</b>	<b>43969</b>	<b>46915</b>	<b>53987</b>	<b>62084</b>	<b>72962</b>	<b>100.0</b>

**ANGUILLA**

**MONTHLY TOURIST ARRIVALS\***

Months	2002	2003	2004	2005	% Change	
					2006	2006/05
January	3868	4018	4580	5430	6042	11.3
February	4677	4501	5563	6208	6681	7.6
March	5702	4930	5846	6997	7718	10.3
April	4472	4787	6005	6117	8392	37.2
May	3783	3915	5130	5588	6466	15.7
June	2997	3373	4001	4766	5845	22.6
July	3771	4542	5485	6093	6588	8.1
August	3536	3856	4246	4460	6086	36.5
September	787	967	1178	1525	2196	44.0
October	1619	1712	1494	2093	2513	20.1
November	3786	4541	4410	5708	6268	9.8
December	4971	5773	6049	7099	8167	15.0
<b>TOTAL</b>	<b>43969</b>	<b>46915</b>	<b>53987</b>	<b>62084</b>	<b>72962</b>	<b>17.5</b>

*\*Excluding visiting Anguillan nationals who reside abroad*

**TOURIST ACCOMMODATION (Rooms)**

Type of Accommodation	2002	2003	2004	2005	% Share	
					2006	2006
Hotels <sup>1</sup>	536	362	346	337		??
Guest Houses	101	88	88	96		??
Apartments/Villas	400	309	322	313		??
<b>TOTAL</b>	<b>1037</b>	<b>759</b>	<b>756</b>	<b>746</b>	<b>0</b>	<b>??</b>

<sup>1</sup> *Sonesta Hotel closed in September 2002*

**Source: Department of Tourism, Anguilla**