

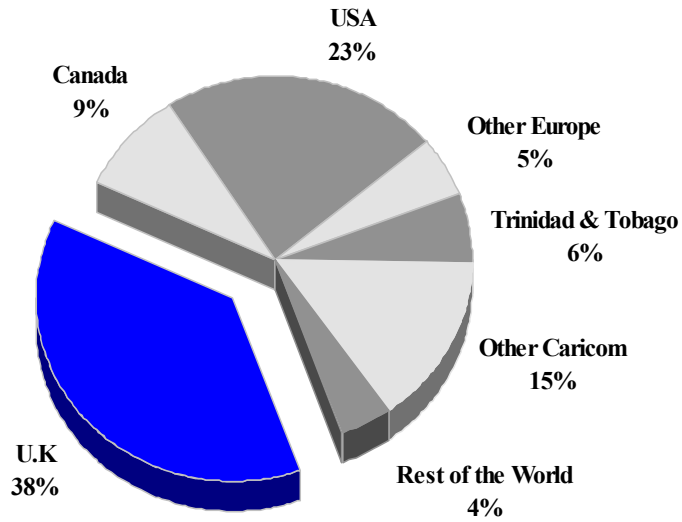
BARBADOS

TOURISM HIGHLIGHTS FOR 2006

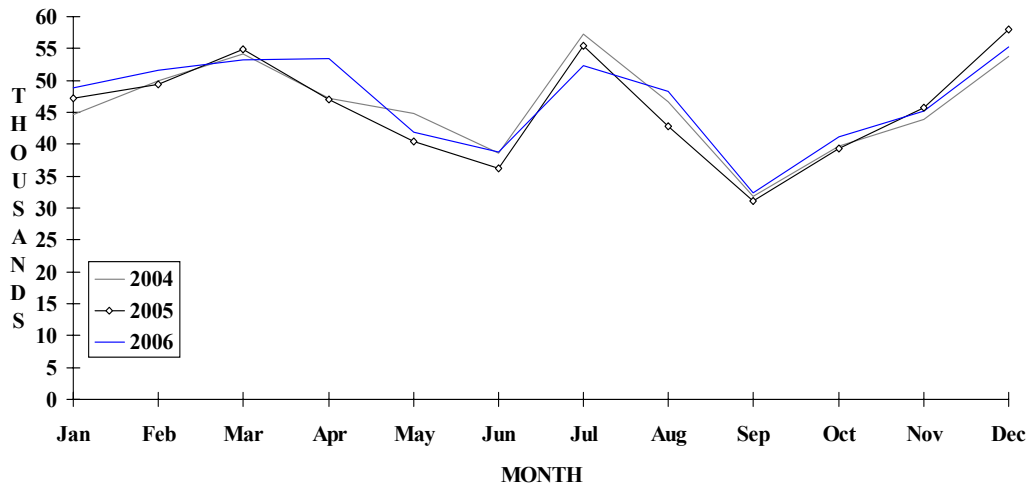
VISITOR ARRIVALS			
Tourist Arrivals ✈	562,558	Cruise Passenger Arrivals	539,092
➔ <i>Winter</i>	36.9%	➔ <i>Winter</i>	44.8%
➔ <i>Summer</i>	63.1%	➔ <i>Summer</i>	55.2%
		Cruise Ship Calls	440
VISITOR PROFILE			
Average Intended Length of Stay (<i>nights</i>) ^I	10.0	Tourist Arrivals by Place of Stay^I	
Tourist Arrivals by Purpose of Visit^I		➔ <i>Hotels</i>	49.5%
➔ <i>Holiday</i>	78.5%	➔ <i>Guest House/Apartment</i>	10.7%
➔ <i>Business</i>	12.4%	➔ <i>Private</i>	23.9%
➔ <i>Other</i>	9.1%	➔ <i>Other</i>	0.2%
TOURISM AND OTHER RELATED ECONOMIC STATISTICS			
Total Expenditure (<i>US\$ millions</i>)	\$763.2	Hotel and Restaurant contribution to GDP	12.4%
Average Daily Expenditure (<i>US\$</i>)	\$127.48	GDP at Factor Cost (<i>US\$ million</i>)	\$2,307.7
Tourism Budget (<i>US\$ thousands</i>) ^{IV}	\$22,137	Consumer Price Index (<i>% ch. 2004/'03</i>)	1.4%
ACCOMMODATION STATISTICS		SOCIO-ECONOMIC STATISTICS	
Rooms	5,945	Land Area (<i>square Kilometres</i>)	432.0
Room Occupancy Rates	49.7%	Population (thousand mid year 2004)	272.4

BARBADOS

**TOURIST ARRIVALS BY MAIN MARKETS
2006**



MONTHLY TOURIST ARRIVALS



BARBADOS

TOURIST ARRIVALS BY COUNTRY OF RESIDENCE

Country of Residence	2002	2003	2004	2005	% Share	
					2006	2006
United States	123429	129326	129675	131005	130767	23.2
Canada	46754	49641	50025	47690	49198	8.7
United Kingdom	192606	202564	213945	202765	211523	37.6
Other Europe	25328	29526	30030	26852	29400	5.2
Trinidad & Tobago	25559	27530	26492	30889	34480	6.1
Other Caricom	64118	69278	78262	97134	82989	14.8
Rest of World	20105	23346	23073	11199	24201	4.3
TOTAL	497899	531211	551502	547534	562558	100.0

MONTHLY TOURIST ARRIVALS

Months	2002	2003	2004	2005	% Change	
					2006	2006/05
January	39915	40743	44719	47242	48888	3.5
February	41205	43643	49870	49338	51580	4.5
March	48583	49016	54190	54963	53169	-3.3
April	37804	47504	47255	46979	53484	13.8
May	36373	40750	44865	40368	41849	3.7
June	33426	39994	38536	36289	38708	6.7
July	49239	52982	57285	55385	52315	-5.5
August	47503	46745	45625	42741	48366	13.2
September	30977	28737	31837	31099	32333	4.0
October	39273	38210	39717	39292	41153	4.7
November	44667	45924	43870	45773	45260	-1.1
December	48934	56963	53733	58065	55183	-5.0
TOTAL	497899	531211	551502	547534	562288	2.7

CRUISE PASSENGER ARRIVALS

Months						% Change	
	2002	2003	2004	2005	2006	2006/05	
January	80516	83577	101119	82204	64981	-21.0	
February	64641	66304	83975	64880	57894	-10.8	
March	64057	63071	94446	79841	62211	-22.1	
April	42559	59365	71119	71676	56553	-21.1	
May	28759	20791	26826	21669	22488	3.8	
June	23574	19360	32201	25596	22905	-10.5	
July	24580	22863	27871	19494	19705	1.1	
August	23961	19344	27165	19127	22266	16.4	
September	11099	17716	28525	12975	22571	74.0	
October	29306	37657	40889	28471	32381	13.7	
November	50200	57797	82353	50777	69715	37.3	
December	80001	91274	104781	86878	85422	-1.7	
TOTAL	523253	559119	721270	563588	539092	-4.3	

Cruise Ship Calls	423	442	539	395	440
-------------------	-----	-----	-----	-----	-----

TOURIST ACCOMMODATION (Rooms)

Type of Accommodation	2002	2003	2004	2005	2006
Hotels	} 4984	2663	n.a	4937	
Apartment Hotels		2326	n.a	1245	
Apartments & Cottages	1589	1071	n.a	0	
Guest Houses	169	150	n.a	171	
TOTAL	6742	6210	0	6353	0

Source: Barbados Statistical Service