

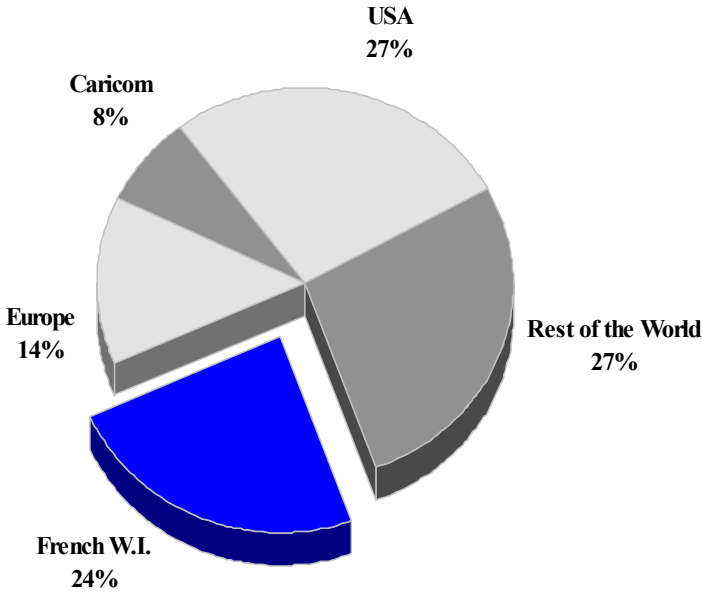
DOMINICA

TOURISM HIGHLIGHTS FOR 2006

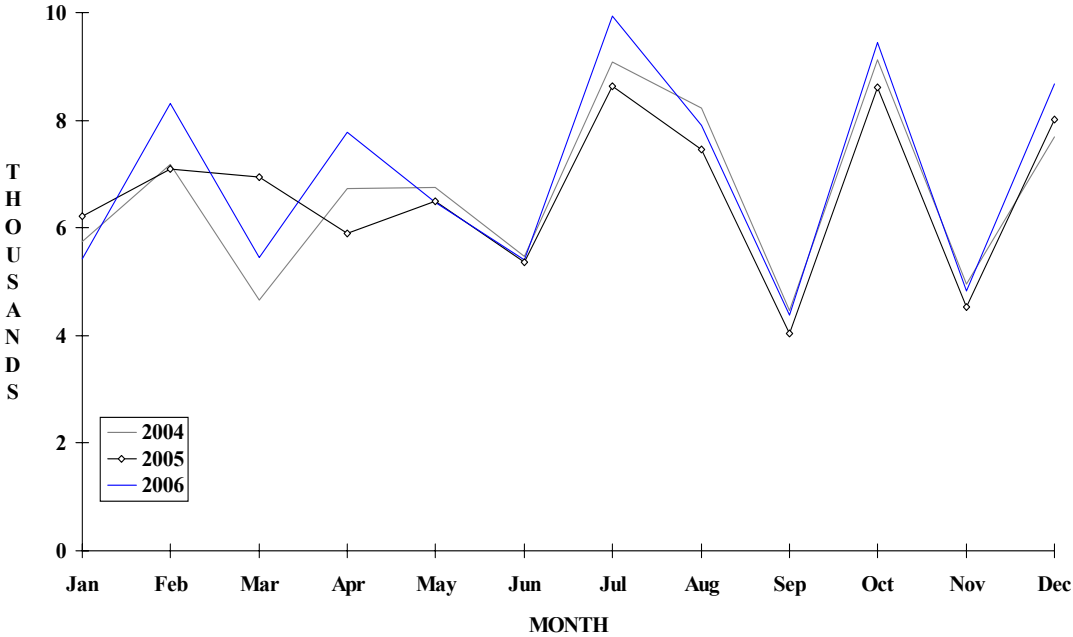
VISITOR ARRIVALS			
Tourist Arrivals ➔	84,041	Cruise Passengers	301,511
➔ <i>Summer</i>	69.7%	➔ <i>Summer</i>	54.6%
➔ <i>Winter</i>	30.3%	➔ <i>Winter</i>	45.4%
		Cruise Ship Calls	299
VISITOR PROFILE			
Average Length of Stay (<i>nights</i>)	n.a	Tourist Arrivals by Place of Stay	
Tourist Arrivals by Purpose of Visit		➔ <i>Hotels</i>	19.7%
➔ <i>Holiday</i>	83.2%	➔ <i>Guest Houses/Apartments</i>	7.9%
➔ <i>Business</i>	11.3%	➔ <i>Private</i>	64.7%
➔ <i>Other</i>	5.5%	➔ <i>Other</i>	7.7%
TOURISM AND OTHER RELATED ECONOMIC STATISTICS			
Total Expenditure (<i>US\$ millions</i>)	\$60.3	GDP at Factor Cost (<i>US\$ millions</i>)	\$226.8
Tourism Budget (<i>US\$ thousands</i>) ^{IV bf}	\$1,568	Consumer Price Index (% ch. 2004/'03)	2.5%
Hotel and Restaurant contribution to GDP ^I	2.7%		
ACCOMMODATION STATISTICS		SOCIO-ECONOMIC STATISTICS	
Rooms	931	Land Area (<i>square Kilometres</i>)	750
		Population (<i>thousand mid year 2003</i>)	71.2

DOMINICA

**TOURIST ARRIVALS BY MAIN MARKETS
2006**



MONTHLY TOURIST ARRIVALS



DOMINICA

TOURIST ARRIVALS BY COUNTRY OF RESIDENCE

Country of Residence	2002	2003	2004	2005	2006	% Share 2006
U.S.A	15464	15638	17574	18492	22011	26.2
Canada	2039	1968	1724	1977	2552	3.0
United Kingdom	5652	6062	6035	6117	6503	7.7
France	2353	2532	1866	1853	2239	2.7
Other Europe	2126	2178	2307	2288	2561	3.0
OECS	10830	10504	10347	10767	10899	13.0
Other CARICOM	4835	4670	4962	4843	6243	7.4
French W.I	16935	17695	20420	18517	19475	23.2
Other Countries	8959	11943	14852	14403	11558	13.8
TOTAL	69193	73190	80087	79257	84041	100.0

MONTHLY TOURISTS ARRIVALS

Month	2002	2003	2004	2005	2006	% Change 2006/05
January	5019	5118	5743	6208	5431	-12.5
February	6921	6222	7175	7087	8302	17.1
March	5799	6324	4652	6938	5456	-21.4
April	4387	6038	6726	5903	7778	31.8
May	5486	5519	6751	6500	6484	-0.2
June	4766	5335	5479	5353	5400	0.9
July	7277	8149	9073	8635	9935	15.1
August	7610	7089	8227	7466	7899	5.8
September	3477	4083	4475	4029	4387	8.9
October	5669	7972	9127	8605	9451	9.8
November	5849	4605	4962	4523	4838	7.0
December	6933	6736	7697	8010	8680	8.4
TOTAL	69193	73190	80087	79257	84041	6.0

DOMINICA

CRUISE PASSENGER ARRIVALS

Month	2002	2003	2004	2005	% Change	
					2006	2006/05
January	30099	29152	47316	40446	56038	38.6
February	22701	23093	47537	30788	52536	70.6
March	22165	24276	52543	37046	42020	13.4
April	14121	15860	39533	28350	32924	16.1
May	1979	3594	13785	16709	15375	-8.0
June	143	130	15414	12501	13201	5.6
July	300	185	12579	12710	13410	5.5
August	91	72	15229	12341	15979	29.5
September	-	-	17665	3134	12361	-
October	7317	13956	23226	20583	27337	32.8
November	17547	26310	47109	36351	50291	38.3
December	20396	40416	51678	50335	48171	-4.3
TOTAL	136859	177044	383614	301294	379643	26.0

Number of Calls	187	206	299	234	314
------------------------	-----	-----	-----	-----	-----

TOTAL VISITOR ARRIVALS BY CATEGORY

Category	2002	2003	2004	2005	2006
Tourists	69193	73190	80087	79257	84041
Cruise Passengers	136859	177044	383614	301511	379643
Other same-day visitors	1676	3928	2577	650	926
TOTAL	207728	254162	466278	381418	464610

TOURIST ACCOMMODATION (Rooms)

Rooms	2002	2003	2004	2005	2006
TOTAL	931	931	791	787	818

Sources: Division of Tourism, National Development Corporation, Department of Statistics- Dominica