

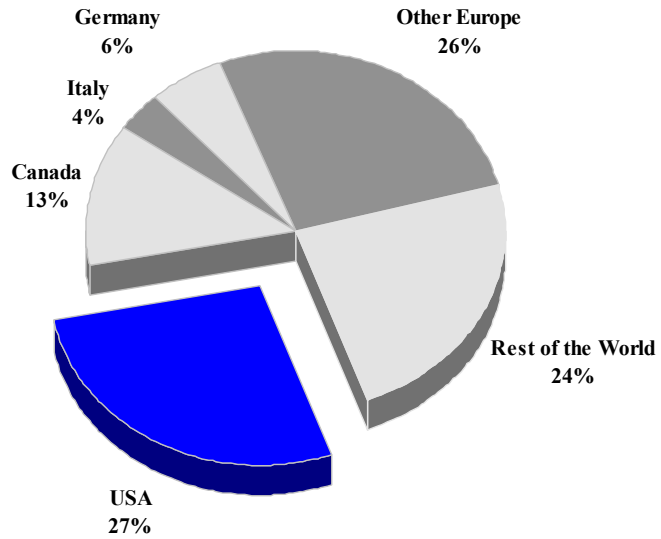
DOMINICAN REPUBLIC

TOURISM HIGHLIGHTS FOR 2006

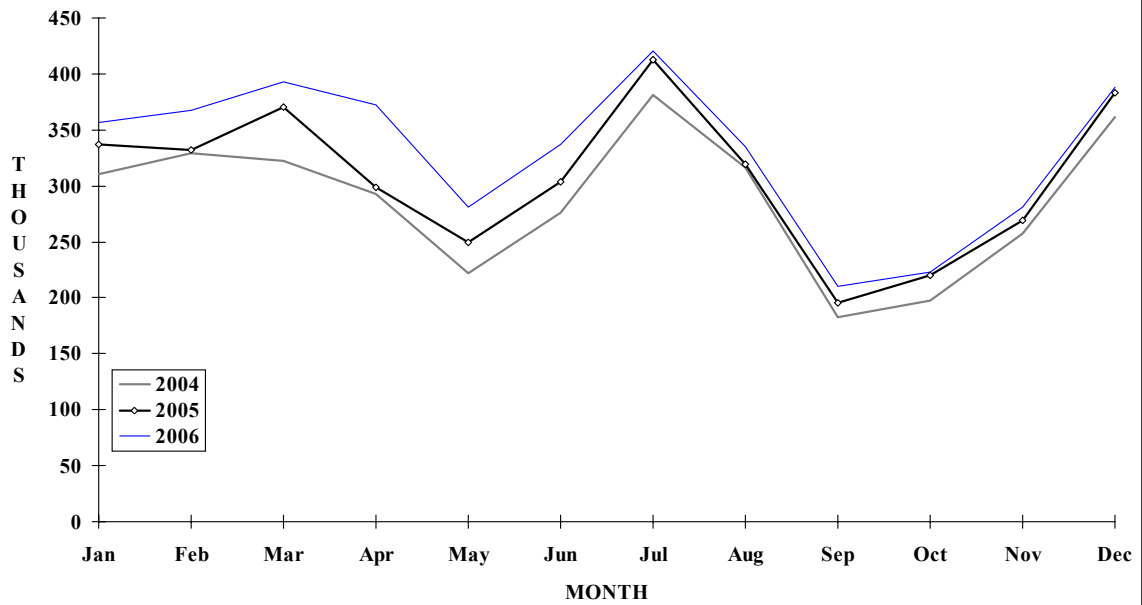
VISITOR ARRIVALS			
Tourist Air Arrivals ✈ ➡ <i>Summer</i> ➡ <i>Winter</i>	3,965,055 62.4% 37.6%	Cruise Passengers Cruise ship calls	303,489 n.a
VISITOR PROFILE			
Average Length of Stay (nights)	8.9	Tourist Arrivals by Purpose of Visit	
Tourist Arrivals by Place of Stay		➡ <i>Holiday</i>	96.8%
➡ <i>Hotels</i>	76.9%	➡ <i>Business</i>	2.0%
➡ <i>Other</i>	23.1%	➡ <i>Other</i>	1.2%
TOURISM AND OTHER RELATED ECONOMIC STATISTICS			
Visitor Expenditure (<i>US\$ millions</i>)	\$3,180.4	GDP at Factor Cost (<i>US\$ millions</i>)	\$16,846.5
Consumer Price Index (% ch. 2004/'03)	51.5%	Hotel and Restaurant contribution to GDP	7.3%
ACCOMMODATION STATISTICS		SOCIO-ECONOMIC STATISTICS	
Rooms	59,082	Land Area (<i>square Kilometres</i>)	48,442
Room Occupancy Rates	74.2%	Population (<i>thousand mid year 2004</i>)	9,084.0

DOMINICAN REPUBLIC

**TOURIST ARRIVALS BY MAIN MARKETS
2006**



MONTHLY TOURIST ARRIVALS



DOMINICAN REPUBLIC

TOURIST AIR ARRIVALS BY NATIONALITY

Nationality	2002	2003	2004	2005	2006
Non-Nationals	2295630	2747899	2872680	3088247	3342106
Dominicans*	497579	520283	577500	602445	622949
TOTAL	2793209	3268182	3450180	3690692	3965055

*Dominican nationals resident overseas.

VISITOR ARRIVALS* BY MODE OF ARRIVAL

Mode of Arrival	2002	2003	2004	2005	2006
Air	2793209	3268182	3450180	360692	3965055
Sea*	n.a	n.a	n.a	n.a	n.a
TOTAL	2793209	3268182	3450180	360692	3965055

*Includes Cruise passenger arrivals

FOREIGN VISITOR AIR ARRIVALS BY NATIONALITY

Country of Residence	2002	2003	2004	2005	2006	%Share 2006
U.S.A	710875	865942	933017	1010012	1092317	27.5
Canada	313491	412625	448926	427074	509323	12.8
Italy	113569	135293	124004	133954	144115	3.6
Germany	240546	243135	233146	234800	226737	5.7
United Kingdom	146257	171696	198014	217945	242559	6.1
Other Europe	545948	715854	732620	808710	812511	20.5
Other	707117	248664	780453	858197	937493	23.6
TOTAL	2777803	2793209	3450180	3690692	3965055	100.0

FOREIGN VISITOR AIR ARRIVALS

Month	2002	2003	2004	2005	2006	% Change 2006/05
January	216795	286589	310003	336746	356247	5.8
February	244024	293289	329014	331651	367698	10.9
March	285110	299597	321984	369991	393014	6.2
April	215449	270960	293048	298746	371953	24.5
May	185663	211592	221596	249561	280738	12.5
June	224456	256771	276484	303950	336738	10.8
July	287364	351923	381284	412849	420265	1.8
August	245825	312545	316866	319705	335081	4.8
September	170267	191877	183234	195593	210695	7.7
October	171778	201939	197614	219649	223449	1.7
November	223904	247155	257068	268759	281308	4.7
December	322574	343945	361985	383492	387869	1.1
TOTAL	2793209	3268182	3450180	3690692	3965055	7.4

* Including Dominican nationals resident overseas.

MONTHLY CRUISE ARRIVALS

Month	2002	2003	2004	2005	2006	% Change 2006/05
January	35944	48374	75635	47227	47014	-0.5
February	35579	46955	74547	54706	54168	-1.0
March	38025	57717	77393	55186	56989	3.3
April	26658	53638	57380	32456	29186	-10.1
May	5765	12039	12697	6370	10650	67.2
June	10433	14459	13543	7634	7183	-5.9
July	12703	23303	18743	11762	14961	27.2
August	6643	12322	13057	5365	8226	53.3
September	3163	7503	5127	4502	3613	-19.7
October	7076	19523	13415	2255	4241	88.1
November	19922	36187	34856	17113	20065	17.3
December	44781	65973	59928	45229	47193	4.3
TOTAL	283414	182220	456321	289805	303489	4.7

TOURIST ACCOMMODATION (Rooms)

Rooms	2002	2003	2004	2005	2006
Hotels	n.a	n.a	n.a	56555	n.a
Apartments	n.a	n.a	n.a	376	n.a
Villas/Cottages	n.a	n.a	n.a	610	n.a
Other	n.a	n.a	n.a	2329	n.a
TOTAL	54730	56378	59082	59870	

* Preliminary

**Source: Banco Central de la Republica Dominicana