

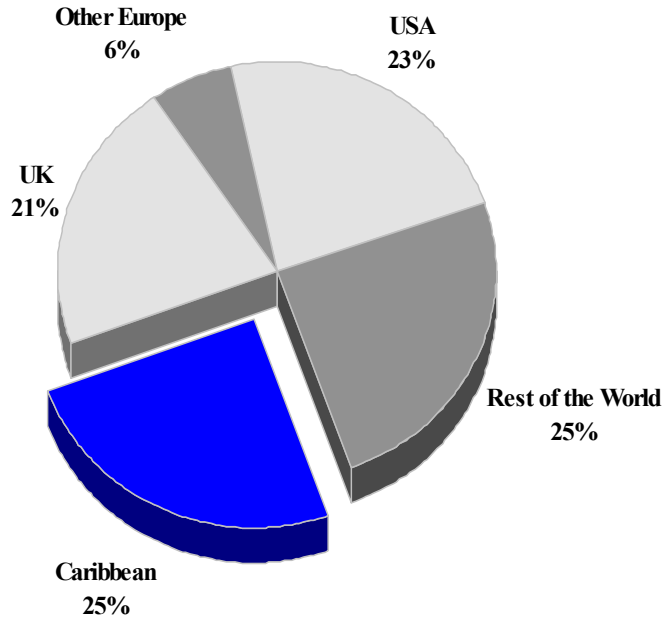
GRENADA

TOURISM HIGHLIGHTS FOR 2006

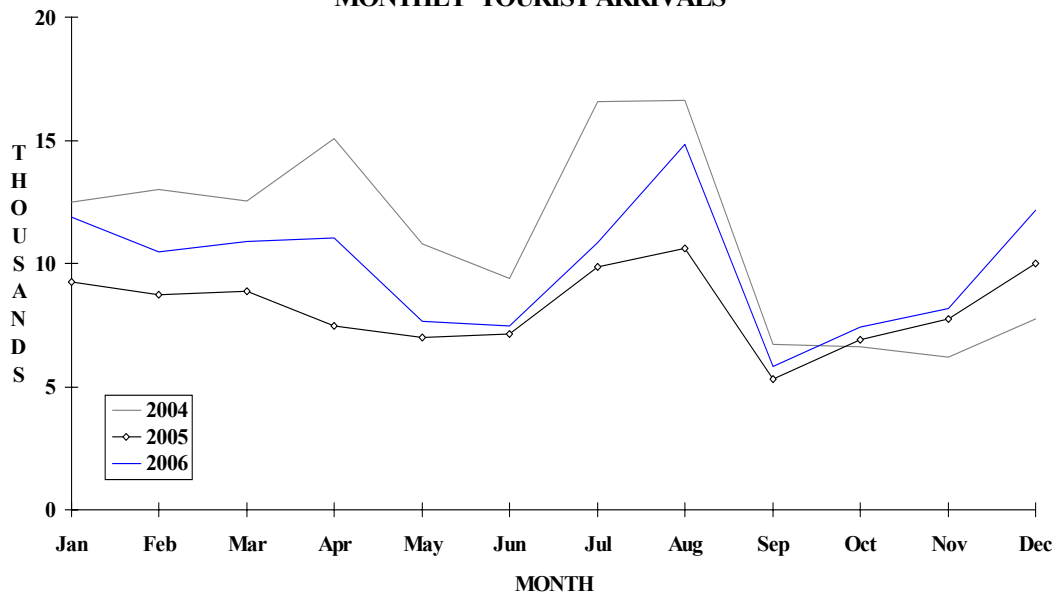
VISITOR ARRIVALS			
Tourist Arrivals ➔ ➔ <i>Summer</i> ➔ <i>Winter</i>	118,654 62.7% 37.3%	Cruise Passengers ➔ <i>Summer</i> ➔ <i>Winter</i> Cruise Ship calls Yachts calls ¹	218,684 36.3% 63.7% 221 2,989
VISITOR PROFILE			
Average Length of Stay (nights) Tourist Arrivals by Purpose of Visit¹ ➔ Holiday ➔ Business ➔ Other	7.3 75.8% 15.7% 8.5%	Tourist Arrivals by Place of Stay¹ ➔ <i>Hotels</i> ➔ <i>Guest Houses/Apartments</i> ➔ <i>Private</i> ➔ <i>Other</i>	36.2% 11.2% 39.6% 12.9%
TOURISM AND OTHER RELATED ECONOMIC STATISTICS			
Total Expenditure (US\$ millions) ¹¹ Tourism Budget (US\$ thousands) ^{11b}	\$156.8 \$4,182	Hotel and Restaurant contribution to GDP ¹ GDP at Factor Cost (US\$ millions) ¹ Consumer Price Index (% ch. 2004/'03)	7.9% \$355.6 2.3%
ACCOMMODATION STATISTICS		SOCIO-ECONOMIC STATISTICS	
Rooms Room Occupancy Rates ¹¹	1,470 71.0%	Land Area (square Kilometres) Population (thousand mid year 2004)	344 104.5

GRENADA

TOURIST ARRIVALS BY MAIN MARKETS 2006



MONTHLY TOURIST ARRIVALS



GRENADA

TOURIST ARRIVALS BY COUNTRY OF RESIDENCE

Country of Residence	2002	2003	2004	2005	2006	% Share 2006
United States	36508	35191	30127	25181	27127	22.9
Canada	4684	5599	5309	4341	6335	5.3
United Kingdom	29760	33286	28232	15605	25042	21.1
Other Europe	9208	9857	7945	6779	7492	6.3
Trinidad & Tobago	17219	19958	20228	13055	15522	13.1
Other CARICOM	15084	16234	17638	13731	14007	11.8
Grenadians abroad	14836	16715	19076	15907	18400	15.5
Rest of the World	5117	5515	5310	3949	4729	4.0
TOTAL	132416	142355	133865	98548	118654	100.0

MONTHLY TOURIST ARRIVALS

Month	2002	2003	2004	2005	2006	% Change 2006/05
January	12265	12378	12486	9260	11888	28.4
February	10934	11601	13012	8173	10490	28.3
March	13392	11895	12546	8852	10903	23.2
April	9846	12822	15090	7481	11013	47.2
May	9397	8240	10821	7013	7656	9.2
June	8237	10089	9380	7115	7468	5.0
July	12867	15246	16580	9839	10868	10.5
August	16951	17381	16629	10614	14816	39.6
September	6755	7862	6724	5299	5835	10.1
October	8804	10264	6634	6886	7415	7.7
November	10117	10778	6220	7780	8154	4.8
December	12851	13799	7743	10237	12148	18.7
TOTAL	132416	142355	133865	98549	118654	20.4

CRUISE PASSENGER ARRIVALS

Month						% Change	
	2002	2003	2004	2005	2006	2006/05	
January	24390	24384	46681	50681	46238	-8.8	
February	24452	22159	36101	45146	35342	-21.7	
March	22002	21949	38877	52214	32911	-37.0	
April	20012	18403	22915	36677	24764	-32.5	
May	684	3499	7408	300	849	183.0	
June	717	515	5605	297	119	-59.9	
July	713	487	5934	190	64	-66.3	
August	716	360	5849	37	0	-100.0	
September	414	137	2856	84	0	-100.0	
October	5386	3170	401	5095	7372	44.7	
November	15306	16596	19719	30779	23769	-22.8	
December	20269	35266	37454	53580	47256	-11.8	
TOTAL	135061	146925	229800	275080	218684	-20.5	

Number of Calls

Cruise Ships	259	267	249	260	221
Yachts	3966	4157	3177	2989	

TOURIST ACCOMMODATION (Rooms)

Type of Accommodation	2002	2003	2004	2005	2006
Hotels	1227	1167	466	878	
Guest Houses	227	225	172	241	
Apartments/Cottages	323	366	222	351	
TOTAL	1777	1758	860	1470	0

Source: Grenada Department of Tourism