

# JAMAICA

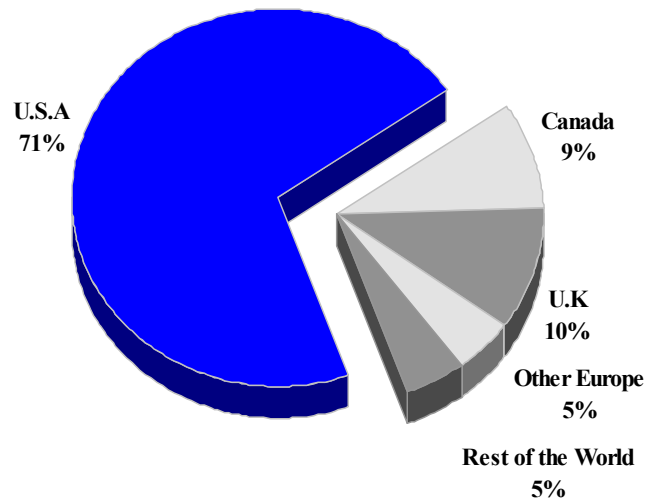
## TOURISM HIGHLIGHTS FOR 2006

VISITOR ARRIVALS			
Tourist Arrivals ➤ ➡ <i>Summer</i> ➡ <i>Winter</i>	1,678,905 64.3% 35.7%	Cruise Passengers ➡ <i>Summer</i> ➡ <i>Winter</i> Cruise Calls	1,336,453 61.4% 38.6% 563
VISITOR PROFILE			
Average Length of Stay ( <i>nights</i> ) Tourist Arrivals by Purpose of Visit ➡ <i>Holiday</i> ➡ <i>Business</i> ➡ <i>Other</i>	9.3 78.8% 5.7% 15.5%	Tourist Arrivals by Place of Stay ➡ <i>Hotels</i> ➡ <i>Guest Houses/Apartments</i> ➡ <i>Private</i> ➡ <i>Other</i>	65.3% 4.8% 28.7% 1.3%
TOURISM AND OTHER RELATED ECONOMIC STATISTICS			
Total Expenditure ( <i>US\$ millions</i> ) Tourism Budget ( <i>US\$ thousands</i> ) *	\$1,436.6 \$29,499	GDP at Factor Cost ( <i>US\$ millions</i> ) Hotel and Restaurant contribution to GDP Consumer Price Index ( <i>%ch. 2004/'03</i> )	\$7,976.5 n.a 13.6
ACCOMMODATION STATISTICS		SOCIO-ECONOMIC STATISTICS	
Rooms Room Occupancy Rates	24,947 61.4%	Land Area ( <i>square Kilometres</i> ) Population ( <i>thousand mid year 2004</i> )	11,424 2,649.2

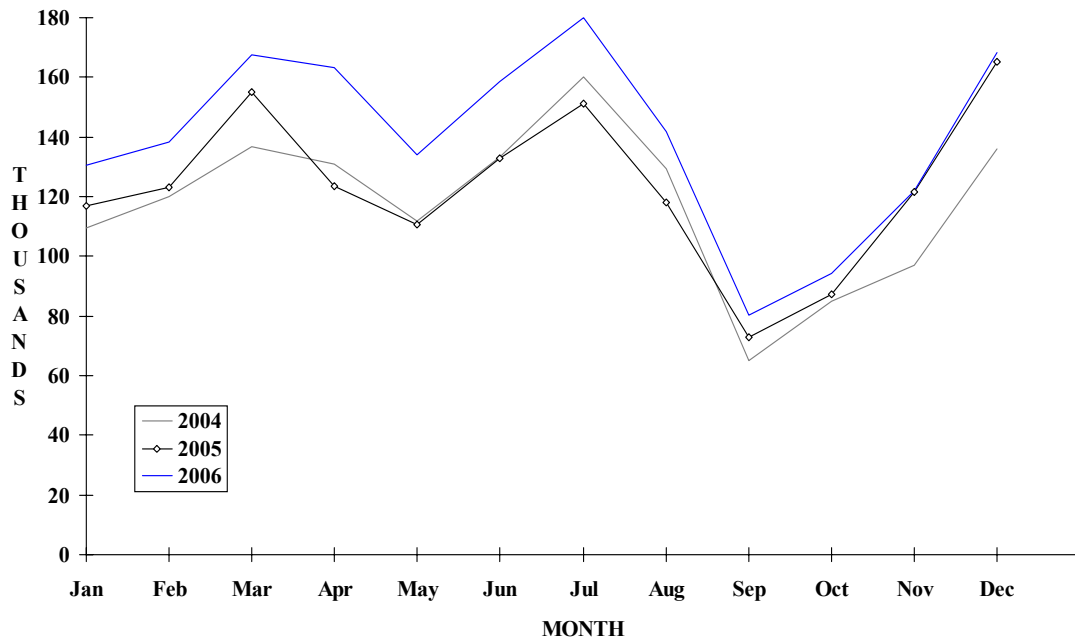
\* Actual and fiscal (April-March) 2003/2004

# JAMAICA

**TOURIST ARRIVALS BY MAIN MARKETS  
2006**



**MONTHLY TOURIST ARRIVALS**



# JAMAICA

## TOURIST ARRIVALS BY COUNTRY OF RESIDENCE

Country of Residence	2002	2003	2004	2005	2006	% Share 2006
U.S.A	924096	968315	996131	1058317	1190721	70.9
Canada	97413	95265	105623	116862	153569	9.1
United Kingdom	125859	149714	161606	149773	175363	10.4
Other Europe	53230	68786	80319	84106	80711	4.8
Caribbean	45237	48041	52036	50759	56589	3.4
Other Americas	9298	8058	8050	2522	10460	0.6
Rest of World	11233	12106	11021	16324	11492	0.7
<b>TOTAL</b>	<b>1266366</b>	<b>1350285</b>	<b>1414786</b>	<b>1478663</b>	<b>1678905</b>	<b>100.0</b>

## MONTHLY TOURIST ARRIVALS

Month	2002	2003	2004	2005	2006	% Change 2006/05
January	90097	101306	109350	116844	130695	11.9
February	100010	111458	120129	123022	138428	12.5
March	130200	129485	136606	155103	167439	8.0
April	100689	111974	131101	123578	163272	32.1
May	99314	102021	111759	110821	133902	20.8
June	113705	122071	133393	132710	158425	19.4
July	137688	144039	160231	151289	180015	19.0
August	118698	128219	129526	117898	141631	20.1
September	75918	76535	64940	72926	80397	10.2
October	80132	86639	84802	87467	94351	7.9
November	96095	98048	97084	121740	121916	0.1
December	123820	138490	135865	165265	168434	1.9
<b>TOTAL</b>	<b>1266366</b>	<b>1350285</b>	<b>1414786</b>	<b>1478663</b>	<b>1678905</b>	<b>13.5</b>

## JAMAICA

## CRUISE PASSENGER ARRIVALS

Month	2002	2003	2004	2005	2006	% Change 2006/05
January	91399	118834	124650	111841	134279	20.1
February	76799	116451	115351	112261	118051	5.2
March	79547	128758	129266	150871	153972	2.1
April	75442	108009	109744	98654	109074	10.6
May	54453	64350	64424	74505	83311	11.8
June	54125	64812	76427	73246	88087	20.3
July	64512	84154	68203	59881	85935	43.5
August	57938	63121	69229	75555	98918	30.9
September	52177	68058	48301	69463	78702	13.3
October	58749	95910	61723	68463	99103	44.8
November	82228	100522	98704	110016	131136	19.2
December	118050	119617	133751	131087	155885	18.9
<b>TOTAL</b>	<b>865419</b>	<b>1132596</b>	<b>1099773</b>	<b>1135843</b>	<b>1336453</b>	<b>17.7</b>

Number of Calls	396	502	482	508	563
-----------------	-----	-----	-----	-----	-----

## TOURIST ACCOMMODATION (Rooms)

Type of Accommodation	2002	2003	2004	2005	2006
Hotels	16723	16986	17533	18817	19550
Guest Houses	2637	2774	2739	2771	2641
Resort Cottages	3814	3798	3625	3511	3571
Apartment Houses	1065	1067	1050	940	913
<b>TOTAL</b>	<b>24239</b>	<b>24625</b>	<b>24947</b>	<b>26039</b>	<b>26675</b>

## Area

Kingston*	2074	2141	2077	2085	2108
Montego Bay	7965	8019	7944	7950	7922
Negril	5647	5851	6414	6426	6449
Ocho Rios	6787	6777	6712	7406	7986
Port Antonio	947	991	986	967	979
Mandeville\South Coast	819	846	814	1205	1231

\*Includes the Parish of St. Andrew

Source: Ministry of Tourism - Jamaica