

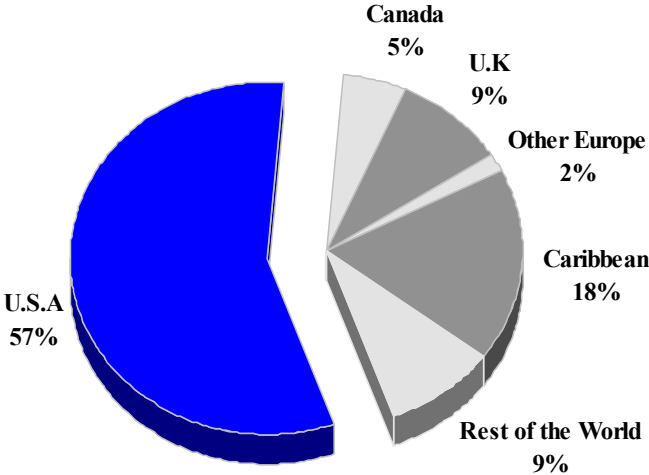
ST KITTS AND NEVIS

TOURISM HIGHLIGHTS FOR 2004

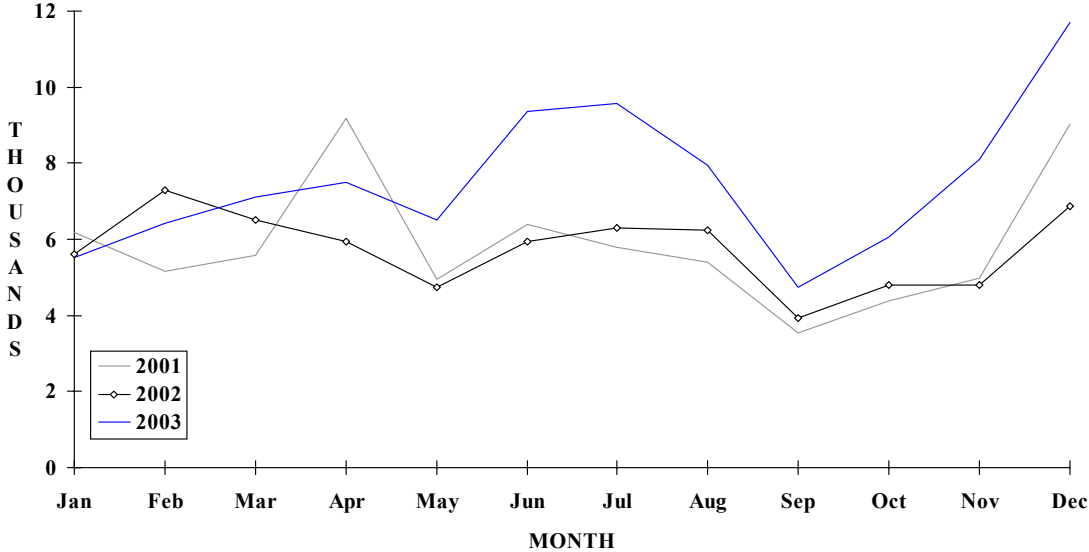
| VISITOR ARRIVALS | | | |
|---|------------------------------|--|----------------------------------|
| Tourist Arrivals ➔ ➔ <i>Summer</i> ➔ <i>Winter</i> | 91,769 n.a n.a | Cruise Passengers ^I ➔ <i>Summer</i> ➔ <i>Winter</i> Cruise Ship Calls ^I | 150,429 52.2% 47.8% 281 |
| VISITOR PROFILE | | | |
| Average Length of Stay (<i>nights</i>) ^{III} Tourist Arrivals by Purpose of Visit ^{III} ➔ <i>Holiday</i> ➔ <i>Business</i> ➔ <i>Other</i> | 9.6 89.8% 9.6% 0.6% | Tourist Arrivals by Place of Stay ^{III} ➔ <i>Hotels</i> ➔ <i>Apartment/Villas</i> ➔ <i>Private</i> ➔ <i>Other</i> | 49.9% 4.3% 40.9% 4.9% |
| TOURISM AND OTHER RELATED ECONOMIC STATISTICS | | | |
| Total Expenditure (<i>US\$ millions</i>) Tourism Budget (<i>US\$ 000</i>) ^{IV b} Hotel and Restaurant contribution to GDP | \$106.9 \$3,238 8.5% | GDP at Factor Cost (<i>US\$ millions</i>) Consumer Price Index (<i>%ch. 2004/'03</i>) | \$326.8 2.3% |
| ACCOMMODATION STATISTICS | | SOCIO-ECONOMIC STATISTICS | |
| Rooms ^V | 1,754 | Land Area (<i>square Kilometres</i>) Population (<i>thousand mid year 2004</i>) | 269 47.9 |

ST. KITTS & NEVIS

**TOURIST ARRIVALS BY MAIN MARKETS
2004**



MONTHLY TOURIST ARRIVALS



ST KITTS AND NEVIS

TOURIST ARRIVALS BY COUNTRY OF RESIDENCE

| Country of Residence | 2000 | 2001 | 2002 | 2003 | % Share | |
|----------------------|--------------|--------------|--------------|--------------|--------------|-------|
| | | | | | 2004 | 2004 |
| United States | 23474 | 25558 | 27525 | 34962 | 52341 | 57.0 |
| Canada | 5395 | 5237 | 4352 | 3979 | 4688 | 5.1 |
| United Kingdom | 12841 | 8726 | 5464 | 6776 | 8502 | 9.3 |
| Other Europe | 1543 | 1730 | n.a | 1244 | 1563 | 1.7 |
| OECS | 6244 | 7294 | n.a | 9852 | 10595 | 11.5 |
| Other CARICOM | 5441 | 4569 | n.a | 2395 | 2993 | 3.3 |
| U.S. Virgin Islands | 5862 | 5509 | n.a | n.a | n.a | - |
| Netherlands Antilles | 3721 | 3592 | n.a | 2370 | 2622 | 2.9 |
| Rest of World | 8628 | 8350 | 30190 | 7382 | 8465 | 9.2 |
| TOTAL | 73149 | 70565 | 67531 | 68960 | 91769 | 100.0 |

MONTHLY TOURIST ARRIVALS

| Month | 2000 | 2001 | 2002 | *2003 | %Change | |
|--------------|--------------|--------------|--------------|--------------|------------|---------------|
| | | | | | 2004 | 2004/03 |
| January | 6463 | 6173 | 5611 | 5526 | n.a | -100.0 |
| February | 6778 | 5150 | 7287 | 6408 | n.a | -100.0 |
| March | 6434 | 5582 | 6521 | 7115 | n.a | -100.0 |
| April | 5252 | 9182 | 5952 | 7492 | n.a | -100.0 |
| May | 4170 | 4960 | 4744 | 6515 | n.a | -100.0 |
| June | 4805 | 6385 | 5938 | 9373 | n.a | -100.0 |
| July | 6607 | 5791 | 6299 | 9569 | n.a | -100.0 |
| August | 8717 | 5409 | 6250 | 7944 | n.a | -100.0 |
| September | 3496 | 3542 | 3935 | 4743 | n.a | -100.0 |
| October | 4693 | 4399 | 4790 | 6073 | n.a | -100.0 |
| November | 6384 | 4985 | 4809 | 8103 | n.a | -100.0 |
| December | 9350 | 9007 | 6862 | 11702 | n.a | -100.0 |
| TOTAL | 73149 | 70565 | 68998 | 90563 | n.a | -100.0 |

* include same-day visitors

