

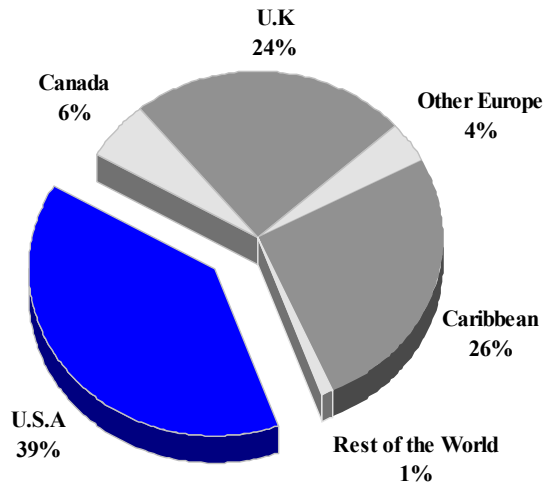
ST. LUCIA

TOURISM HIGHLIGHTS FOR 2006

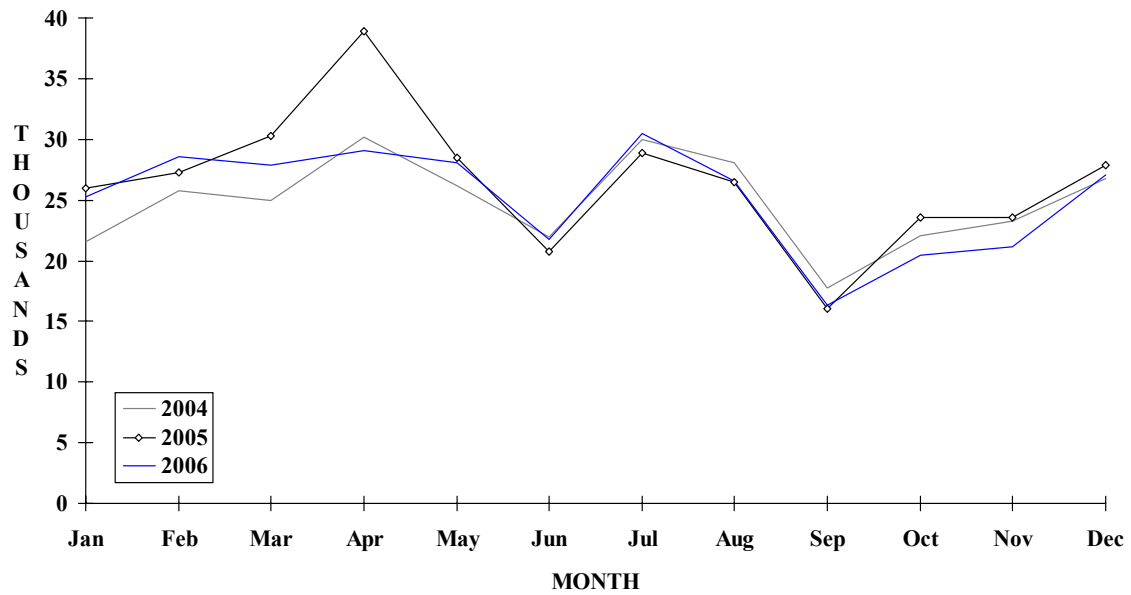
VISITOR ARRIVALS			
Tourist Arrivals ✈	302,510	Cruise Passengers	359,593
➔ <i>Summer</i>	63.4%	➔ <i>Summer</i>	43.0%
➔ <i>Winter</i>	36.6%	➔ <i>Winter</i>	57.0%
Same-day Visitors	7051	Cruise Ship Calls	267
VISITOR PROFILE			
Average Length of Stay (nights)		Tourist Arrivals by Place of Stay	
Tourist Arrivals by Purpose of Visit		➔ <i>Hotels</i>	70.3%
➔ <i>Holiday</i>	91.0%	➔ <i>Guest Houses/Apartments</i>	1.7%
➔ <i>Business</i>	5.0%	➔ <i>Private</i>	10.4%
➔ <i>Other</i>	4.0%	➔ <i>Other</i>	17.6%
TOURISM AND OTHER RELATED ECONOMIC STATISTICS			
Total Expenditure (<i>US\$ millions</i>)	\$325.7	GDP at Factor Cost (<i>US\$millions</i>)	\$635.7
Tourism Budget (<i>US\$ thousands</i>) ^{VI b}	\$6,918	Hotel and Restaurant contribution to GDP	14.8%
		Consumer Price Index (<i>% ch. 2004/'03</i>)	1.4%
ACCOMMODATION STATISTICS		SOCIO-ECONOMIC STATISTICS	
Rooms	3,974	Land Area (<i>square Kilometres</i>)	616
Room Occupancy Rates	64.8%	Population (<i>thousand mid year 2004</i>)	162.4

ST. LUCIA

**TOURIST ARRIVALS BY MAIN MARKETS
2006**



MONTHLY TOURIST ARRIVALS



TOURIST ARRIVALS BY COUNTRY OF RESIDENCE

Country of Residence	2002	2003	2004	2005	2006	% Share 2006
United States	94044	98078	107089	112557	117450	38.8
Canada	12927	13494	15315	16506	17491	5.8
United Kingdom	63277	75426	81370	84725	73312	24.2
Germany	3929	3582	3289	3318	2569	0.8
Other Europe	9492	11185	13203	12343	9684	3.2
Caribbean	66409	70543	74242	84729	78464	25.9
Rest of World	3385	4640	3923	3761	3540	1.2
TOTAL	253463	276948	298431	317939	302510	100.0

MONTHLY TOURIST ARRIVALS

Month	2002	2003	2004	2005	2006	%Change 2006/05
January	25448	24930	21532	25997	25215	-3.0
February	23627	21875	25766	27229	28619	5.1
March	23123	23387	24977	30320	27832	-8.2
April	27661	27993	30131	38901	29024	-25.4
May	23001	25372	26196	28469	28055	-1.5
June	16662	22504	21991	20753	21760	4.9
July	21920	26228	29926	28839	30453	5.6
August	19968	24632	28079	26474	26538	0.2
September	14185	17392	17748	16016	16347	2.1
October	18859	19448	22065	23511	20453	-13.0
November	19612	20665	23214	23538	21153	-10.1
December	19397	22522	26806	27892	27061	-3.0
TOTAL	253463	276948	298431	317939	302510	-4.9

CRUISE PASSENGER ARRIVALS

Month	2002	2003	2004	2005	2006	% Change 2006/05
January	66742	53410	65462	68510	54532	-20.4
February	56352	48736	59660	50938	51877	1.8
March	58120	52224	67887	60392	59119	-2.1
April	41787	44738	55354	49343	39384	-20.2
May	17238	13073	18456	8253	5432	-34.2
June	11072	6786	17667	10264	11069	7.8
July	9509	6756	15099	7099	10410	46.6
August	11706	6790	14574	7050	7000	-0.7
September	8202	8184	20777	10200	10735	5.2
October	18587	25962	18376	10820	11187	3.4
November	29860	54666	54618	53699	40503	-24.6
December	58005	71915	73349	57796	58345	1.0
TOTAL	387180	393240	481279	394364	359593	-8.8

Number of Calls	378	245	262	328	258
------------------------	-----	-----	-----	-----	-----

VISITOR ARRIVALS BY CATEGORY

Category	2002	2003	2004	2005	2006	% Share 2006
Tourists	253463	276948	298431	317939	302510	45.2
Cruise Passenger	387180	393240	481279	394364	359593	53.7
Other Same-day Visitors	7712	12817	11441	7541	7051	1.1
TOTAL	648355	683005	791151	719844	669154	100.0

TOURIST ACCOMMODATION (Rooms)

Type of Accommodation	2002	2003	2004	2005	2006
Hotels	3041	3079	3123	3572	
Apartments	300	57	159	166	
Guest Houses	370	370	405	439	
Villas\Cottages	n.a	243	287	334	
TOTAL	3711	3749	3974	4511	0

Sources: St Lucia Tourist Board and Government Statistical Department