

BRITISH VIRGIN ISLANDS

Visitor Arrival Summary

Estimates of Tourist Arrivals to the British Virgin Islands (BVI) in 2010 surpassed the 2009 total by 7.0 percent or 21.6 thousand, with a recorded aggregate of 330.3 thousand. The Winter period performed particularly well, being up by 13.6 percent, and growth at the end of the Summer months was calculated to be 2.5 percent when compared to the same period in 2009.

- ◆ Information related to Tourist Arrivals by Main Markets was unavailable.
- ◆ For the second year running, the number of cruise ships calling at the terminal in BVI increased. Calls moved from 408 in 2008 to 421 in 2009 and an additional 43 more in 2010 brought the total to 464. In spite of these increases, the BVI Cruise Industry continued to spiral downward in a cycle which began in 2008. Cruise Passenger arrivals to the BVI contracted in 2010 on top of the drops in 2008 and 2009 of -0.6 percent and -7.2 percent respectively. In total 501.5 thousand passengers visited, at a reduction of 5.4 percent.

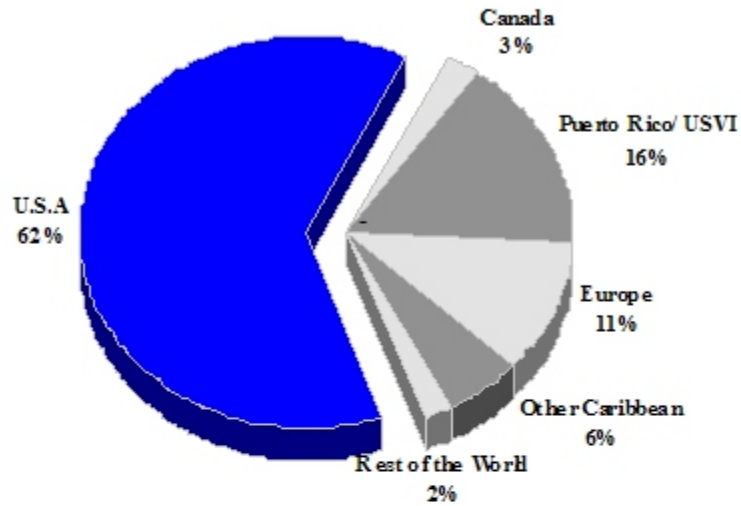
TOURISM HIGHLIGHTS FOR 2010

VISITOR ARRIVALS			
Tourist Arrivals → *	330,343	Cruise Passengers *	501,451
→ Summer	42.9%	→ Summer	69.0%
→ Winter	57.1%	→ Winter	31.0%
Same day visitors	10,703	Cruise Ship calls	464
VISITOR PROFILE			
Average Length of Stay (nights) ^I	10.0	Tourist Arrivals by Place of Stay	
Tourist Arrivals by Purpose of Visit ^V		→ Hotels	30.4%
→ Holiday	96.3%	→ Charter Boats	50.9%
→ Business	1.9%	→ Private	8.7%
→ Other	1.8%	→ Other Accommodation	10.0%
TOURISM AND OTHER RELATED ECONOMIC STATISTICS			
Visitor Expenditure (US\$ millions)	\$389.4	Tourism Budget (US\$ thousands) ^{Vb}	\$11,580
Hotel and Restaurant contribution to GDP ^I	15.6%	GDP at Factor Cost (US\$ millions) ^I	\$876.5
		Consumer Price Index (%ch. 2009/'08)	3.0%
ACCOMMODATION STATISTICS		SOCIO-ECONOMIC STATISTICS	
Rooms * ^I	2,353	Land Area (square Kilometres)	150
Room Occupancy Rates * ^{IV}	67.3%	Population (thousand mid year 2009)	28.9

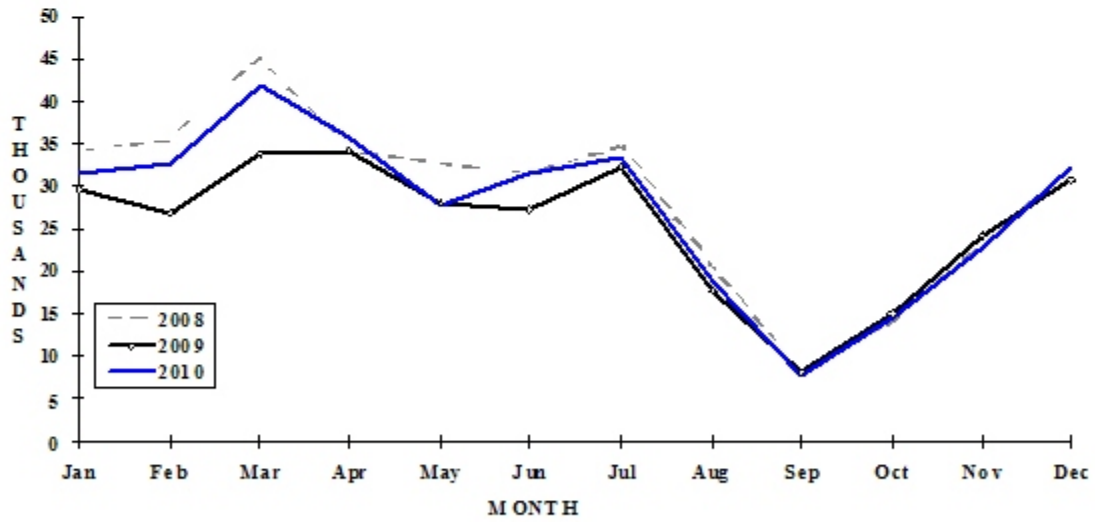
* Development Planning Unit estimate

BRITISH VIRGIN ISLANDS

TOURIST ARRIVALS BY MAIN MARKETS
2010^e



MONTHLY TOURIST ARRIVALS



BRITISH VIRGIN ISLANDS

TOURIST ARRIVALS BY COUNTRY OF RESIDENCE

Country of Residence	2006	2007	2008	2009	% Share	
					2010	2010
United States	n.a	n.a	n.a	n.a	n.a	-
Canada	n.a	n.a	n.a	n.a	n.a	-
Europe	n.a	n.a	n.a	n.a	n.a	-
Puerto Rico/USVI	n.a	n.a	n.a	n.a	n.a	-
Other Caribbean	n.a	n.a	n.a	n.a	n.a	-
South America	n.a	n.a	n.a	n.a	n.a	-
Other	n.a	n.a	n.a	n.a	n.a	-
TOTAL	356271	358056	345934	308793	330343	-

MONTHLY TOURIST ARRIVALS

Month	2006	2007	2008	2009	% Change	
					2010	2010/09
January	29849	31158	34221	29514	31410	6.4
February	34533	35457	35355	27080	32618	20.5
March	43140	44096	45103	33880	41974	23.9
April	41703	39965	34302	34230	35707	4.3
May	32486	30262	32713	28034	27553	-1.7
June	31171	31699	31469	27350	31415	14.9
July	35565	34214	34805	32331	33539	3.7
August	20027	21605	20817	17849	18810	5.4
September	9815	9755	7949	8195	7837	-4.4
October	14725	17747	14209	15137	14529	-4.0
November	27320	27168	23125	24382	22650	-7.1
December	35937	34930	31866	30811	32301	4.8
TOTAL	356271	358056	345934	308793	330343	7.0

BRITISH VIRGIN ISLANDS

TOURIST ARRIVALS BY TYPE OF ACCOMMODATION

Place of Stay	2001	2002	2003	2004	% Share	
					2005	2005
Hotel	73714	57790	60299	85096	94447	28.0
Rented Accom.	19757	22740	23691	27549	30576	9.1
Own Home/Friends	21612	24160	21517	23727	26331	7.8
Charter Boats	180542	177005	212251	167384	185778	55.1
TOTAL	295625	281695	317758	303756	337132	100.0

CRUISE PASSENGER ARRIVALS

Month	2006	2007	2008	2009	2010	% Change
						2010/09
January	98315	79872	111838	98263	106427	8.3
February	67262	78444	85776	86691	88634	2.2
March	64620	80467	98338	80416	95565	18.8
April	50971	48983	55229	63362	55288	-12.7
May	13534	23602	21354	13954	5111	-63.4
June	11823	17921	12149	6087	3608	-40.7
July	12643	18701	13583	6292	3631	-42.3
August	15226	19242	6198	6291	3634	-42.2
September	10792	12176	6712	5365	4966	-7.4
October	22966	22487	14758	19816	15983	-19.3
November	43478	70848	46344	63005	46049	-26.9
December	62357	102468	99470	80785	72555	-10.2
Total	473987	575211	571749	530327	501451	-5.4
Cruise ship calls	398	442	408	421	464	
Charter yachts	n.a	n.a	n.a	n.a	n.a	

TOURIST ACCOMMODATION (Rooms on land)

Area	2005	2006	2007	2008	2009
Hotels	1257	1267	1246	1357	1373
Guest Houses/Apartments	581	636	655	972	980
TOTAL	1838	1903	1901	2329	2353

Source: Development Planning Unit - British Virgin Islands

CAYMAN ISLANDS

Visitor Arrival Summary

In 2010 Tourist Arrivals to the Cayman Islands recovered moderately from the loss suffered in 2009. In total, 288.3 thousand Stay-overs were hosted, with Winter arrivals up by 5.6 percent, and those in the Summer up by 6.0 percent. The only months suffering declines were April, down 2.2 percent, and August, down 0.7 percent.

- ◆ The United States continued to be the main source market for the Cayman Islands, with a market share of 79.3 percent. Arrivals from this market increased by 6.2 percent, 13.4 thousand above the previous year's total (215.0 thousand). Arrivals from Canada recovered from the 2009 slow-down, growing by 13.0 percent to amass a total of 19.5 thousand - the highest total in the last five years. Overall, the European market experienced a 3.8 percent increment to aggregate 19.9 thousand Tourists. Of this total, 13.4 thousand originated in the United Kingdom (down by 4.4 percent). Arrivals from the Caribbean were calculated at 13.4 thousand tourists, no appreciable change over the 2009 level, with more than half this number coming from Jamaica (which had fallen by 20.1percent).

- ◆ The Cayman Islands welcomed 1,597.8 thousand passengers in 2010. This total outstripped the 2009 number by 5.1 percent, with higher growth taking place in the Summer months, when passenger arrivals increased by 5.4 percent. Growth in the Winter was 4.6 percent.

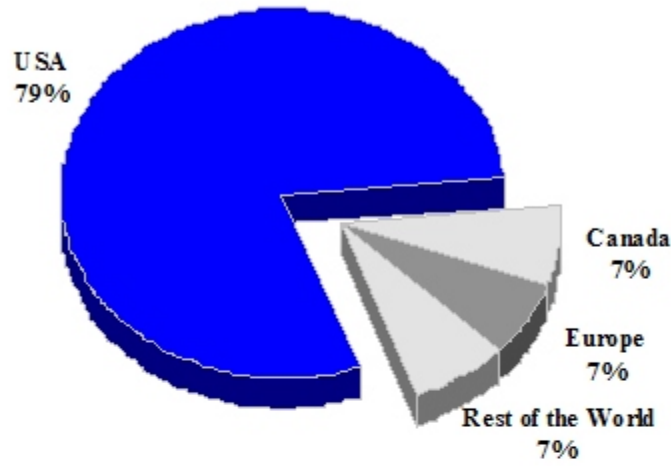
TOURISM HIGHLIGHTS FOR 2010

VISITOR ARRIVALS			
Tourist Arrivals →	288,272	Cruise Passengers	1,597,838
↳ Summer	40.0%	↳ Summer	39.6%
↳ Winter	60.0%	↳ Winter	60.4%
		Cruise Ship calls	570
VISITOR PROFILE			
Average Length of Stay (nights) ^{II}	6.4	Tourist Arrivals by Place of Stay	
Tourist Arrivals by Purpose of Visit		↳ Hotels	54.4%
↳ Holiday	86.9%	↳ Guest Houses/Apartments	23.8%
↳ Business	5.9%	↳ Private homes	15.8%
↳ Other	7.2%	↳ Other	6.0%
TOURISM AND OTHER RELATED ECONOMIC STATISTICS			
Visitor Expenditure (US\$ millions) ^{II}	\$520.0	GDP at Market Prices (US\$ millions) ^{II}	\$2,817.6
Tourism Budget (US\$ thousands) ^{VIII}	\$21,487	Consumer Price Index (% ch. 2010/'09)	0.3%
ACCOMMODATION STATISTICS		SOCIO-ECONOMIC STATISTICS	
Rooms	4,587	Land Area (square Kilometres)	260
Room Occupancy Rates - Hotel	68.2%	Population (thousand mid year 2010)	54.9
- Non-hotel**	44.1%		

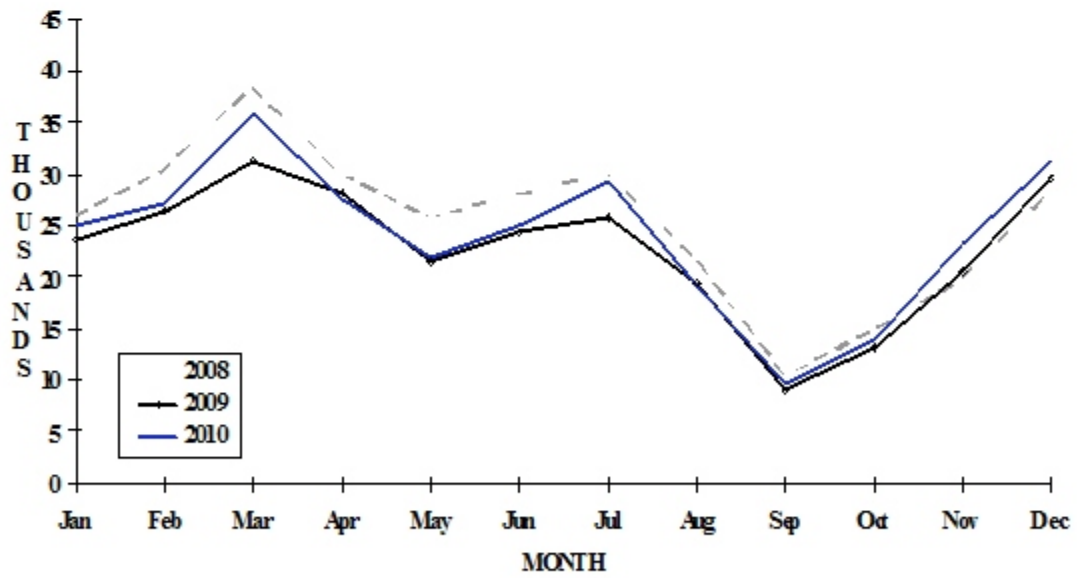
** Includes apartments, condos, guesthouses, villas and bed & breakfast accommodations.

CAYMAN ISLANDS

TOURIST ARRIVALS BY MAIN MARKETS 2010



MONTHLY TOURIST ARRIVALS



CAYMAN ISLANDS

TOURIST ARRIVALS BY COUNTRY OF RESIDENCE

Country of Residence	2006	2007	2008	2009	% Share	
					2010	2010
United States	217364	231865	240462	215042	228461	79.3
Canada	14910	17355	18544	17254	19499	6.8
United Kingdom	12788	15206	15438	14065	13449	4.7
Other Europe	4622	5149	5833	5052	6401	2.2
Jamaica	7610	10262	10470	9527	7609	2.6
Other Caribbean *	3750	4631	4701	3824	5750	2.0
Rest of World	6214	7035	7431	7194	7103	2.5
TOTAL	267258	291503	302879	271958	288272	100.0

* Includes Costa Rica

MONTHLY TOURIST ARRIVALS

Month	2006	2007	2008	2009	% Change	
					2010	2010/09
January	20163	23726	25845	23404	25006	6.8
February	25004	27947	30380	26482	27193	2.7
March	31493	35146	38425	31194	35642	14.3
April	28403	27003	29978	27973	27355	-2.2
May	21172	23427	25722	21438	21824	1.8
June	24251	25837	27971	24149	25050	3.7
July	24256	26895	30008	25775	29203	13.3
August	18064	19481	21629	19231	19097	-0.7
September	10155	11457	10330	9115	9564	4.9
October	14634	15102	14710	13018	13796	6.0
November	22276	25227	19731	20614	23151	12.3
December	27386	30255	28150	29565	31391	6.2
TOTAL	267257	291503	302879	271958	288272	6.0

CRUISE PASSENGER ARRIVALS

Month						% Change	
	2006	2007	2008	2009	2010	2010/09	
January	211678	224880	195217	161657	165378	2.3	
February	180675	203734	176154	136809	128994	-5.7	
March	253124	217690	182622	167418	177664	6.1	
April	182790	170239	153049	138876	160835	15.8	
May	112374	130555	101312	119329	114504	-4.0	
June	112190	95966	93120	122863	118965	-3.2	
July	122781	109196	108514	108894	115471	6.0	
August	144179	99753	87381	99211	115721	16.6	
September	110971	69802	69372	89891	84776	-5.7	
October	128754	94588	105366	98610	85679	-13.1	
November	160373	137234	117221	118292	154258	30.4	
December	210247	162029	163221	158522	175593	10.8	
TOTAL	1930136	1715666	1552549	1520372	1597838	5.1	
Cruise ship calls	802	657	570	547	570		

TOURIST ACCOMMODATION (Rooms)

Type of Accommodation *	2005	2006	2007	2008	2009
Hotels	-	2205	2197	2188	1959
Apts./Cottages	-	-	-	-	-
Guest Houses	-	-	-	-	-
Other **	-	1702	2287	2417	2373
TOTAL	n.a	3907	4484	4605	4332

* As of the 30th of September each year.

** Includes apartments, condos, guesthouses, villas and bed & breakfast accommodations.

Source: Department of Tourism, Cayman Islands

CUBA

Visitor Arrival Summary

Tourist Arrival numbers to Cuba continued to increase in 2010. There were an aggregated 2,531.7 thousand arrivals to the Spanish-speaking island, an expansion of 4.2 percent. Tourist arrivals in the Winter season moved upward minimally, whilst those in the Summer season increased by 6.8 percent.

- ◆ Arrivals from Canada were enumerated at 945.2 thousand in 2010 giving Canada a leading market share of 37.3 percent, while being a reasonable 3.3 percent increase over the 2009 total. European countries excluding Germany, Italy and Spain accounted for 19.7 percent of total arrivals in 2010 whilst showing no appreciable change over 2009. Germany (-0.5 percent), Italy (-5.1 percent) and Spain (-18.8 percent) all experienced declines in the numbers visiting Cuba. When aggregated, the European arrivals totaled 809.5 thousand or 34.5 percent of all arrivals. This was a decline of 3.4 percent over the previous year's total. Caribbean arrivals recorded the most significant growth in 2010, increasing by 23.3 percent with a total of 390.3 thousand stay-overs.

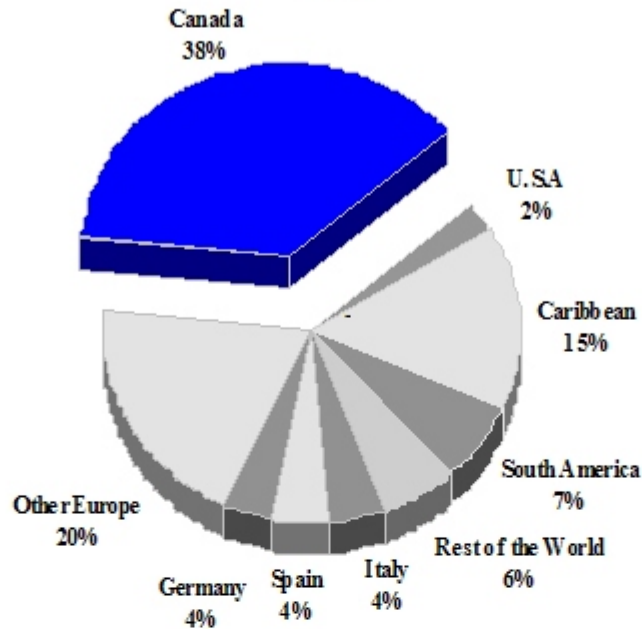
TOURISM HIGHLIGHTS FOR 2010

VISITOR ARRIVALS			
Tourist Arrivals ✈	2,531,745	Cruise Passengers	<u>NOT AVAILABLE</u>
➔ Summer	41.6%		
➔ Winter	58.4%		
VISITOR PROFILE			
Average Length of Stay (<i>nights</i>)	10.9	Tourist Arrivals by Purpose of Visit	
		➔ <i>Holiday</i>	95.6%
		➔ <i>Business</i>	0.5%
		➔ <i>Other</i>	3.9%
TOURISM AND OTHER RELATED ECONOMIC STATISTICS			
Total Expenditure (<i>US\$ millions</i>)	\$2,218.4	GDP at Factor Cost (<i>US\$ millions</i>) ^{I#}	\$46,352.0
		Hotel and Restaurant contribution to GDP ^{VI}	28.8%
ACCOMMODATION STATISTICS		SOCIO-ECONOMIC STATISTICS	
Rooms	56,782	Land Area (<i>square Kilometres</i>)	110,860
Room Occupancy Rates	50.3%	Population (<i>thousand mid year 2010</i>)	11,241.9

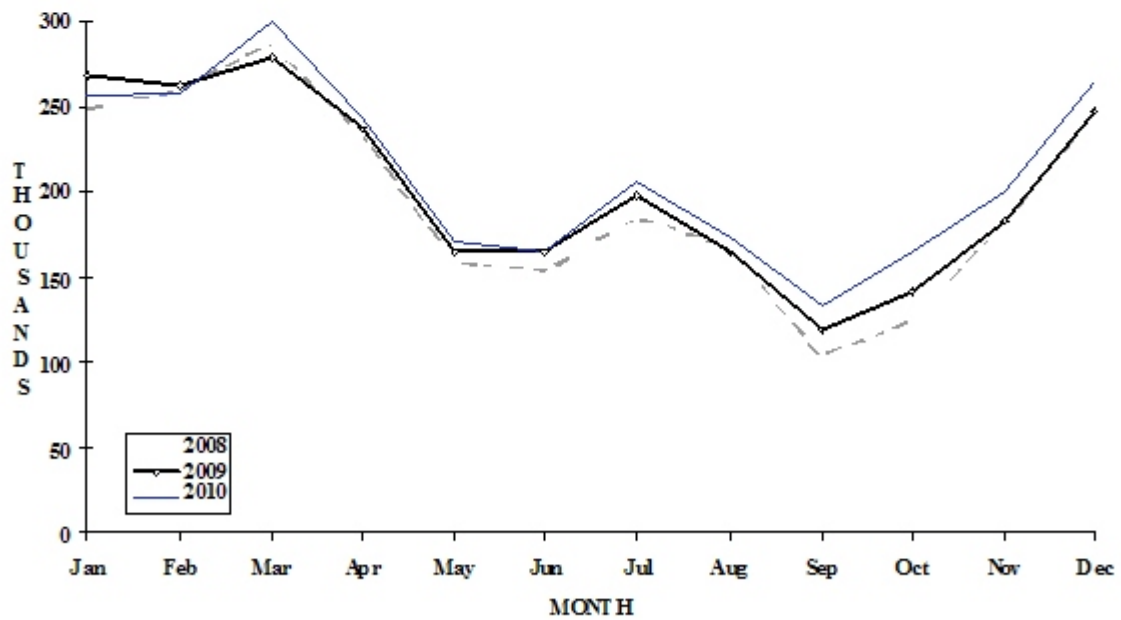
[#] Figure used is Gross Social Product

CUBA

TOURIST ARRIVALS BY MAIN MARKET S
2010



MONTHLY TOURIST ARRIVALS



TOURIST ARRIVALS BY COUNTRY OF RESIDENCE*

Country of Residence	2006	2007	2008	2009	% Share	
					2010	2010
United States	36808	40521	41904	52455	63046	2.5
Canada	604263	660384	818246	914884	945248	37.3
Italy	144249	134289	126042	118347	112298	4.4
Spain	185531	133149	121166	129224	104948	4.1
Germany	114292	103054	100964	93437	93136	3.7
Other Europe	569201	553533	560914	497332	499133	19.7
South America	186140	117225	159245	161456	172294	6.8
Caribbean	187577	215303	246907	316570	390321	15.4
Other	192506	194763	172952	146104	151321	6.0
Total	2220567	2152221	2348340	2429809	2531745	100.0

* Includes same-day visitors

° Includes Central America

MONTHLY TOURIST ARRIVALS

Month	2006	2007	2008	2009	% Change	
					2010	2010/09
January	235500	221226	248446	268115	255612	-4.7
February	247475	217908	259832	262985	257548	-2.1
March	260446	250404	286145	279199	298347	6.9
April	233259	206470	232668	236301	242876	2.8
May	155132	135326	158824	164652	171447	4.1
June	146413	135008	153727	164941	164102	-0.5
July	178758	171452	185585	196990	206347	4.8
August	160456	154306	167826	163875	172820	5.5
September	116421	118768	104098	119914	134539	12.2
October	120506	124868	124512	142544	164677	15.5
November	155142	182999	180613	182778	200338	9.6
December	211059	233486	246064	247515	263092	6.3
TOTAL	2220567	2152221	2348340	2429809	2531745	4.2

TOURIST ACCOMMODATION (Rooms)

Category	2006	2007	2008	2009	2010
2-Star	3254	3366	3452	4093	4852
3-Star	9358	9980	10897	11057	12001
4-Star	19686	19783	20982	21380	23775
5-Star	10602	10803	10889	13380	12801
Other*	3911	3438	2874	2864	3353
TOTAL	46811	47370	49094	52774	56782

Source: National Institute of Tourism (Intur), Cuba

CURACAO

Visitor Arrival Summary

Tourist Arrivals to Curacao suffered a 6.8 percent drop in 2010. This followed on the heels of a sharp spike in Stay-over numbers in 2008, followed by a decline in 2009. Overall, 341.7 thousand Stay-overs visited this small Dutch-speaking island.

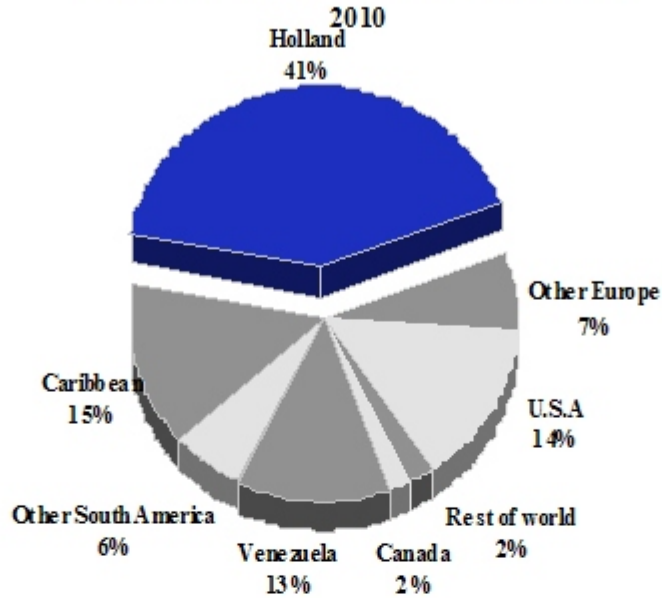
- ◆ Among the major source markets, Holland reemerged as the largest provider of tourists to this destination. The 140.2 thousand tourists who visited from Holland, which was an improvement of 10.2 percent upon the 2009 level, represented 41.0 percent of all arrivals. This was the best performance in terms of both the market share and the number of tourists from this market. Other European countries maintained market share of about 7.0 percent (23.7 thousand tourists) while registering an increase of 5.7 percent. Venezuela, another significant source of visitors accounted for as much as 36.4 percent of arrivals in 2008 (28.9 percent in 2009) but in 2010 provided 13.0 percent of the total. When compared to 2009 the number, arrivals shrank by a sizeable 58.1 percent. Of the other markets, the United States increased by 35.2 percent and arrivals from the Caribbean overall were up by 6.1 percent. Both markets had a similar size of 14.5 percent or some 49.0 thousand tourists.
- ◆ Cruise Passenger arrivals fell below the 2009 total by some 40.0 thousand or 9.5 percent. Heavy losses came during the Summer months with July, August and September down by 54.1 percent, 41.5 percent and 55.5 percent respectively. June numbers, however, were up by a significant 46.7 percent, as were those in October which increased by 56.8 percent.

TOURISM HIGHLIGHTS FOR 2010

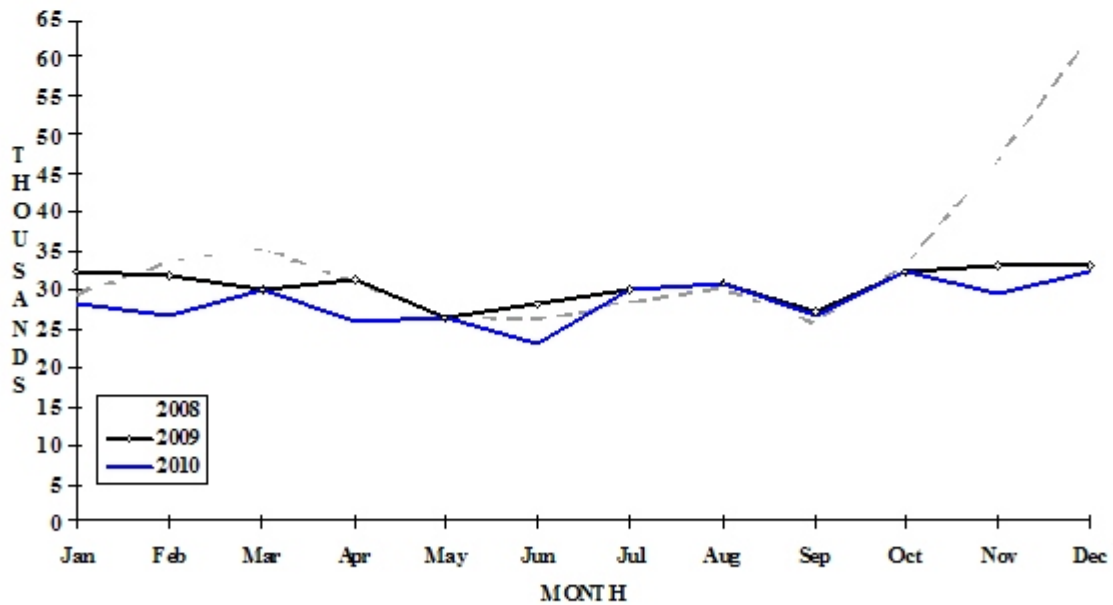
VISITOR ARRIVALS			
Tourist Arrivals →	341,651	Cruise Passengers	383,036
↳ <i>Summer</i>	67.6%	↳ <i>Summer</i>	47.5%
↳ <i>Winter</i>	32.4%	↳ <i>Winter</i>	52.5%
		Cruise Ship calls	221
VISITOR PROFILE			
Average Length of Stay (<i>nights</i>)	7.6	Tourist Arrivals by Place of Stay ^{II}	
Tourist Arrivals by Purpose of Visit ^{II}		↳ <i>Hotels</i>	59.7%
↳ <i>Holiday</i>	93.9%	↳ <i>Guest Houses/Apartments</i>	3.5%
↳ <i>Business</i>	4.1%	↳ <i>Private</i>	26.3%
↳ <i>Other</i>	2.0%	↳ <i>Other</i>	10.5%
TOURISM AND OTHER RELATED ECONOMIC STATISTICS			
Total Expenditure (<i>US\$ millions</i>) ^V	\$283.7	Consumer Price Index (<i>% ch. 2010/'09</i>)	2.8%
Tourism Budget (<i>US\$ thousands</i>) ^X	\$10,121		
ACCOMMODATION STATISTICS		SOCIO-ECONOMIC STATISTICS	
Rooms ^{II}	4,841	Land Area (<i>square Kilometres</i>)	444
Room Occupancy Rates	71.7%	Population (<i>thousand mid year 2010</i>)	142.2

CURACAO

TOURIST ARRIVALS BY MAIN MARKETS



MONTHLY TOURIST ARRIVALS



CURACAO

TOURIST ARRIVALS BY COUNTRY OF RESIDENCE

Country of Residence	2006	2007	2008	2009	2010	% Share 2010
United States	47428	46199	43680	36047	48731	14.3
Canada	7423	6898	7244	6513	7614	2.2
Holland	85262	100384	113696	127175	140183	41.0
Other Europe	18975	20999	23051	22323	23680	6.9
Dominican Republic	3366	3231	2612	2644	2943	0.9
Aruba	12729	14442	16848	16756	18830	5.5
Haiti	1697	1730	1770	1811	1927	0.6
Puerto Rico	1249	902	845	756	728	0.2
Other C'bean*	18893	25372	26121	24805	25200	7.4
Venezuela	21446	60966	148890	105932	44342	13.0
Other South America	12291	14523	16976	15526	20455	6.0
Rest of World	3630	4086	7209	6351	7018	2.1
TOTAL	234389	299732	408942	366639	341651	100.0

*Excludes residents of Netherlands Antilles

MONTHLY TOURIST ARRIVALS

Month	2006	2007	2008	2009	2010	% Change 2010/09
January	19479	21956	29317	32379	28067	-13.3
February	20698	21789	33646	31658	26912	-15.0
March	21251	22763	35321	30001	29772	-0.8
April	21166	23972	30997	31178	25986	-16.7
May	17675	20243	26602	26329	26558	0.9
June	16259	20289	26123	28191	23072	-18.2
July	18940	23492	28325	29815	29845	0.1
August	19467	25565	30135	30923	30767	-0.5
September	17556	23295	25698	27313	26784	-1.9
October	19873	26801	33192	32406	32116	-0.9
November	20191	32516	46728	33381	29435	-11.8
December	21834	37103	62858	33105	32337	-2.3
TOTAL	234389	299784	408942	366679	341651	-6.8

CRUISE PASSENGER ARRIVALS

Month	2006	2007	2008	2009	2010	% Change
						2009/08
January	46342	60009	59839	73562	52107	-29.2
February	36089	39430	45712	60030	54567	-9.1
March	47695	52276	51139	66122	54628	-17.4
April	23810	24677	29581	38879	39662	2.0
May	13509	17374	8351	7734	9162	18.5
June	7082	10560	7113	8626	12651	46.7
July	7621	11804	11364	13264	6082	-54.1
August	11816	11954	7070	11527	6742	-41.5
September	7642	11349	6736	10229	4551	-55.5
October	22602	16552	12303	20280	31801	56.8
November	48971	37072	41333	49443	56460	14.2
December	48372	47850	72356	63392	54623	-13.8
TOTAL	321551	340907	352897	423088	383036	-9.5

Number of Calls	205	255	219	234	221
-----------------	-----	-----	-----	-----	-----

TOURIST ACCOMMODATION (Rooms)

Type of Accommodation	2005	2006	2007	2008	2009
Hotels	n.a	n.a	n.a	n.a	n.a
Apartments	n.a	n.a	n.a	n.a	n.a
Villas/Cottages	n.a	n.a	n.a	n.a	n.a
Guest Houses	n.a	n.a	n.a	n.a	n.a
Other	n.a	n.a	n.a	n.a	n.a
TOTAL	3647	4366	4599	4841	n.a

Source: Curacao Tourist Board

DOMINICA

Visitor Arrival Summary

Dominica hosted 76.5 thousand Stay-over tourists in 2010, a marginal 2.1 percent increase. Of this total, 51.2 thousand (67.0 percent) arrived in the Summer months, with the remaining 25.3 thousand arriving in the Winter. While the Summer shrank slightly by 1.0 percent, the Winter period showed encouraging growth of 9.2 percent.

- ◆ Arrivals from the French West Indies were up by 6.6 percent, moving up from 20.5 thousand in 2009 to 21.8 thousand in 2010. This market held a 28.5 percent share. Arrivals from the United States (25.2 percentage share) made a slight recovery, with an overall 19.3 thousand tourists or 5.9 percent more than 18.2 thousand of 2009. Arrivals from the OECS territories diminished by 2.3 percent, ending at 4.4 thousand. This total was 11.2 percent of the overall Stay-over total. The French market fell below the 2009 level, dipping sharply by 25.6 percent with a total of just over 3.3 thousand. Other markets performing well were Canada, up by 9.2 percent, and the United Kingdom, up by 5.7 percent.

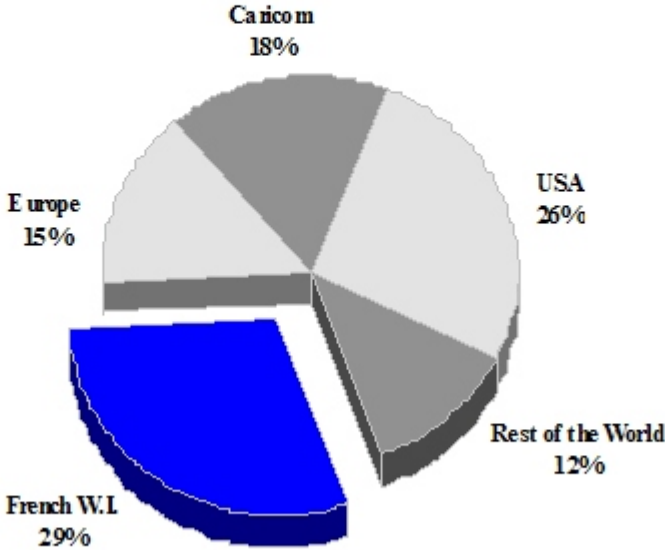
- ◆ Dominica hosted just over 518.0 thousand Cruise passengers in 2010, 2.7 percent less than the previous year's total. The performance during the year, month to month was erratic, with more than half the months suffering significant decline and others experiencing healthy gains.

TOURISM HIGHLIGHTS FOR 2010

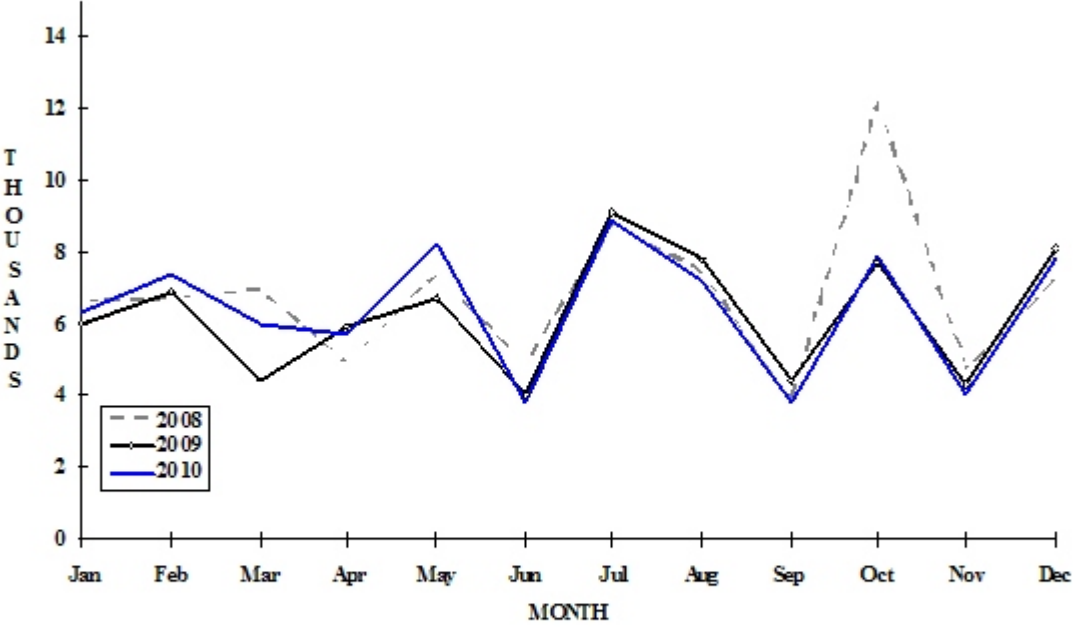
VISITOR ARRIVALS			
Tourist Arrivals →	76,517	Cruise Passengers	517,979
→ <i>Summer</i>	67.0%	→ <i>Summer</i>	55.6%
→ <i>Winter</i>	33.0%	→ <i>Winter</i>	44.4%
		Cruise Ship Calls	272
VISITOR PROFILE			
Average Length of Stay (<i>nights</i>)	10.5	Tourist Arrivals by Place of Stay	
Tourist Arrivals by Purpose of Visit		→ <i>Hotels</i>	20.2%
→ <i>Holiday</i>	80.5%	→ <i>Guest Houses/Apartments</i>	5.9%
→ <i>Business</i>	10.5%	→ <i>Private</i>	57.2%
→ <i>Other</i>	8.9%	→ <i>Other</i>	16.7%
TOURISM AND OTHER RELATED ECONOMIC STATISTICS			
Total Expenditure (<i>US\$ millions</i>)	\$89.7	GDP at Factor Cost (<i>US\$ millions</i>) ^I	\$285.9
Tourism Budget (<i>US\$ thousands</i>) ^{Ibf}	\$3,045	Consumer Price Index (% ch. 2010/'09)	3.3%
Hotel and Restaurant contribution to GDP ^{II}	2.9%		
ACCOMMODATION STATISTICS		SOCIO-ECONOMIC STATISTICS	
Rooms	1,020	Land Area (<i>square Kilometres</i>)	750
		Population (<i>thousand mid year 2009</i>)	71.9

DOMINICA

**TOURIST ARRIVALS BY MAIN MARKETS
2010**



MONTHLY TOURIST ARRIVALS



TOURIST ARRIVALS BY COUNTRY OF RESIDENCE

Country of Residence						% Share	
	2006	2007	2008	2009	2010	2010	
U.S.A	22011	21477	20492	18193	19266	25.2	
Canada	2552	2670	3328	2618	2858	3.7	
United Kingdom	6503	6211	7212	4354	4601	6.0	
France	2239	2403	3624	4469	3323	4.3	
Other Europe	2561	2129	2713	2768	2801	3.7	
OECS	10899	9621	9076	8768	8562	11.2	
Other CARICOM	6243	4623	4349	4283	4384	5.7	
French W.I	19475	17575	18975	20462	21803	28.5	
Other Countries	11558	9806	9765	9009	8919	11.7	
TOTAL	84041	76515	79534	74924	76517	100.0	

MONTHLY TOURISTS ARRIVALS

Month						% Change	
	2006	2007	2008	2009	2010	2010/09	
January	5431	5677	6491	6008	6302	4.9	
February	8302	8509	5157	6853	7338	7.1	
March	5456	5565	6877	4414	6007	36.1	
April	7778	6246	4859	5876	5631	-4.2	
May	6484	7082	7077	6640	8139	22.6	
June	5400	5097	4827	3946	3790	-4.0	
July	9935	8957	9062	9028	8831	-2.2	
August	7899	7538	7422	7715	7207	-6.6	
September	4387	4125	3787	4358	3788	-13.1	
October	9451	7800	12124	7704	7842	1.8	
November	4838	3615	4693	4260	3930	-7.7	
December	8680	6304	7158	8122	7712	-5.0	
TOTAL	84041	76515	79534	74924	76517	2.1	

DOMINICA

CRUISE PASSENGER ARRIVALS

Month	2006	2007	2008	2009	2010	% Change 2010/09
January	56038	53377	55070	67022	79604	18.8
February	52536	44974	55781	77816	67487	-13.3
March	42020	42892	49547	71587	80201	12.0
April	32924	32434	30471	45340	60613	33.7
May	15375	13539	11984	24009	15097	-37.1
June	13201	12712	12902	23175	21781	-6.0
July	13410	16238	15817	23968	21350	-10.9
August	15979	9527	12507	16491	18464	12.0
September	12361	12164	2849	22062	23027	4.4
October	27337	24526	10496	25916	24097	-7.0
November	50291	40932	43704	48962	42847	-12.5
December	48171	51200	85286	86004	63411	-26.3
TOTAL	379643	354515	386414	532352	517979	-2.7

Number of Calls	314	252	213	273	272
------------------------	-----	-----	-----	-----	-----

TOTAL VISITOR ARRIVALS BY CATEGORY

Category	2006	2007	2008	2009	2010
Tourists	84041	76515	79534	74924	76517
Cruise Passengers	379643	354515	386414	532352	517979
Other same-day visitors	939	901	965	780	784
TOTAL	464623	431931	466913	608056	595280

TOURIST ACCOMMODATION (Rooms)

Rooms	2006	2007	2008	2009	2010
TOTAL	818	901	920	963	1020

Sources: Discover Dominica Authority, Department of Statistics- Dominica