

ST. EUSTATIUS

Visitor Arrival Summary

Tourist Arrivals (excluding Antilleans) to St. Eustatius increased by 2.5 percent to reach a total of 12.0 thousand in 2009. A strong summer season (up 6.7 percent) compensated for the slackening in arrivals during the Winter period (down 5.3 percent) which accounted 32.5 percent of arrivals to the destination.

- ◆ Holland continued to be the single most important market for St. Eustatius (accounting for 43.8 percent all tourist arrivals). There was a 6.5 percent increase from this market. Of the other major markets, the other European countries excluding Holland grew by 10.5 percent while the United States decreased by 4.7 percent. Fewer Canadians made the trip to this destination and the miscellaneous unspecified countries showed no appreciable movement.
- ◆ Sea Arrivals for 2008 and 2009 are unavailable.

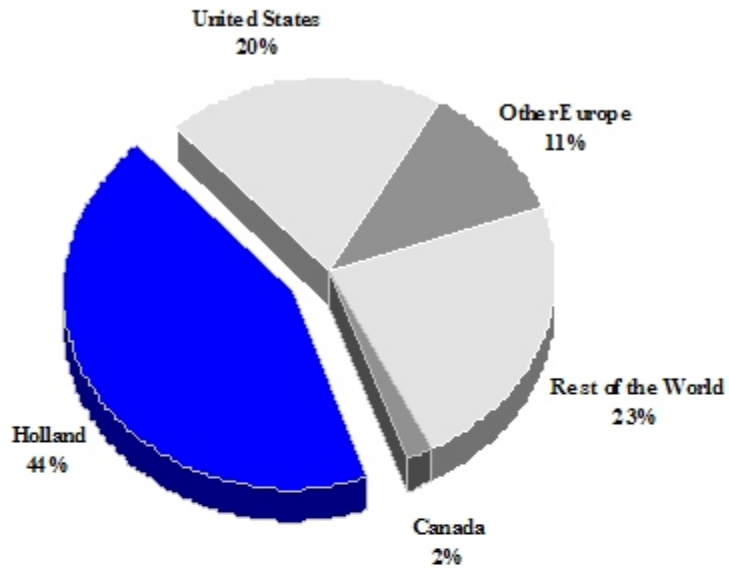
TOURISM HIGHLIGHTS FOR 2009

VISITOR ARRIVALS			
Tourist Arrivals →	12,049	Sea Arrivals ^{II}	5,858
→ <i>Summer</i> *	67.5%	→ <i>Summer</i>	48.5%
→ <i>Winter</i> *	32.5%	→ <i>Winter</i>	51.5%
		Yacht Arrivals ^{III}	707
ACCOMMODATION STATISTICS		SOCIO-ECONOMIC STATISTICS	
Rooms ^X	62	Land Area (<i>square Kilometres</i>)	21
		Population (<i>thousand mid year 2010</i>)	2.9

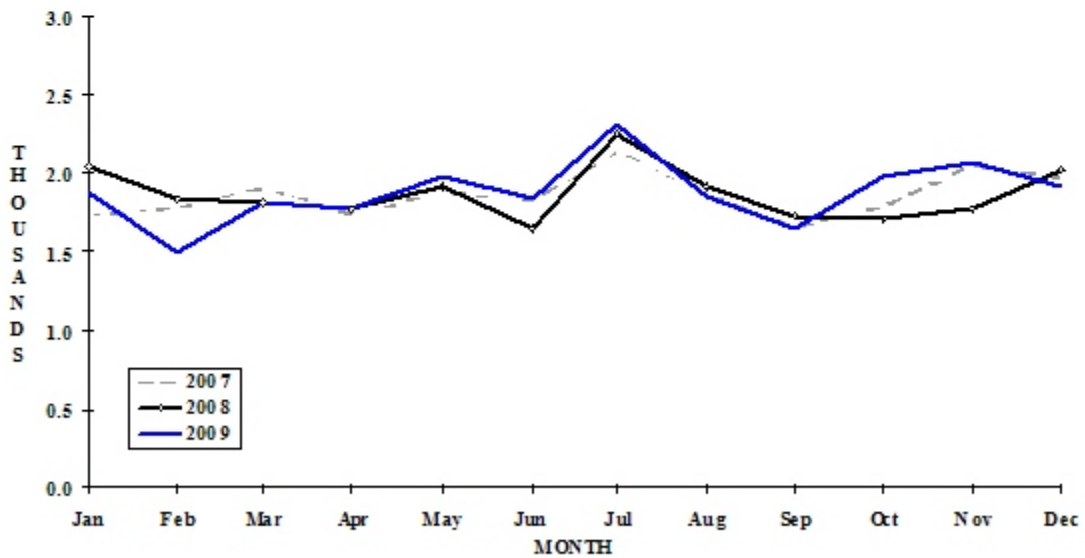
* Based on Total Air Arrivals

ST EUSTATIUS

TOURIST ARRIVALS BY MAIN MARKETS
2009



MONTHLY VISITOR ARRIVALS



* Total Visitor Arrivals includes Antilleans

ST EUSTATIUS

VISITOR AIR ARRIVALS BY NATIONALITY*

Nationality	2005	2006	2007	2008	% Share	
					2009	2009
United States	2309	2206	2738	2513	2394	19.9
Canada	194	138	229	253	236	2.0
Holland	3904	3630	4594	4953	5273	43.8
Other Europe	1496	1222	1299	1248	1379	11.4
Rest of the World	2452	2389	2708	2791	2767	23.0
TOTAL TOURISTS	10355	9585	11568	11758	12049	100.0
Antillean **	10001	9735	10784	10724	10547	
TOTAL AIR VISITORS	20356	19320	22352	22482	22596	

*Includes same-day visitors and returning residents

**Includes residents of St Eustatius

MONTHLY VISITOR AIR ARRIVALS

Month	2005	2006	2007	2008	% Change	
					2009	2009/08
January	1609	1536	1736	2042	1884	-7.7
February	1628	1422	1776	1848	1503	-18.7
March	1672	1803	1912	1815	1815	0.0
April	1527	1693	1743	1781	1781	0.0
May	1756	1756	1879	1916	1987	3.7
June	1655	1855	1827	1645	1839	11.8
July	2106	2401	2133	2260	2309	2.2
August	1667	1817	1864	1923	1863	-3.1
September	1302	1154	1659	1732	1652	-4.6
October	1688	927	1800	1721	1991	15.7
November	1829	1592	2049	1780	2059	15.7
December	1917	1364	1974	2019	1914	-5.2
TOTAL	20356	19320	22352	22482	22597	0.5

ST EUSTATIUS

MONTHLY VISITOR SEA ARRIVALS

Month						% Change	
	2003	2004	2005	2006	2007	2007/06	
January	680	553	56	1827	911	-50.1	
February	1269	726	1058	1652	898	-45.6	
March	948	894	1414	1817	578	-68.2	
April	345	744	756	1962	631	-67.8	
May	239	491	771	1899	474	-75.0	
June	342	268	526	1326	598	-54.9	
July	79	354	652	1685	505	-70.0	
August	200	334	867	1013	253	-75.0	
September	221	115	790	1157	161	-86.1	
October	247	134	863	891	115	-87.1	
November	272	409	987	1145	344	-70.0	
December	506	1095	1142	1879	390	-79.2	
TOTAL	5348	6117	9882	18253	5858	-67.9	
Yacht Arrivals	610	708	778	708	708		

TOURIST ACCOMMODATION (Rooms)

Rooms	2003	2004	2005	2006	2007
Total	n.a	n.a	n.a	n.a	n.a

Source: St. Eustatius Development Foundation

ST KITTS AND NEVIS

Visitor Arrival Summary

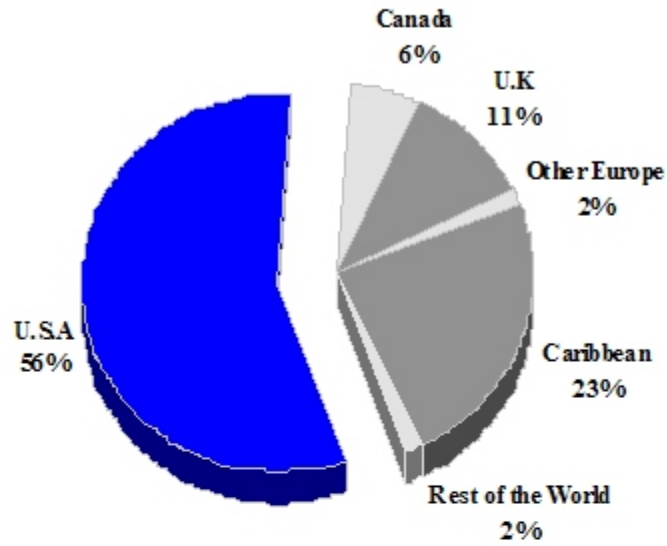
Stay over arrivals to St. Kitts and Nevis for 2010, are unavailable.

TOURISM HIGHLIGHTS FOR 2008

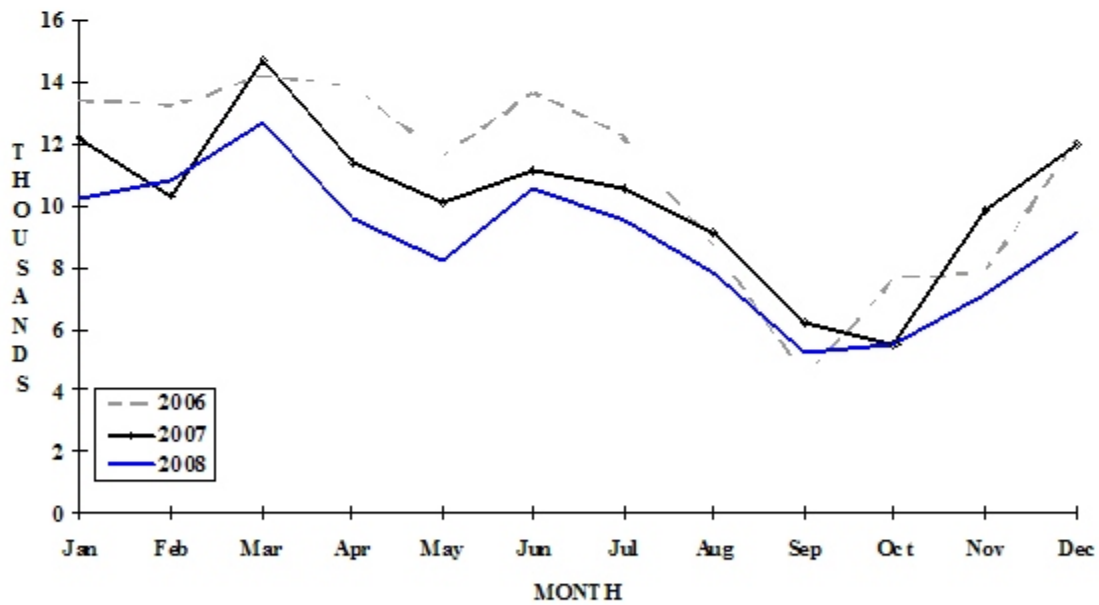
VISITOR ARRIVALS			
Tourist Arrivals ➔	106,408	Cruise Passengers ^I	247,393
➔ <i>Summer</i>	60.4%	➔ <i>Summer</i>	47.0%
➔ <i>Winter</i>	39.6%	➔ <i>Winter</i>	53.0%
		Cruise Ship Calls ^I	242
VISITOR PROFILE			
Average Length of Stay (<i>nights</i>) ^{VII}	9.6	Tourist Arrivals by Place of Stay ^{VII}	
Tourist Arrivals by Purpose of Visit ^{VII}		➔ <i>Hotels</i>	49.9%
➔ <i>Holiday</i>	89.8%	➔ <i>Apartment/Villas</i>	4.3%
➔ <i>Business</i>	9.6%	➔ <i>Private</i>	40.9%
➔ <i>Other</i>	0.6%	➔ <i>Other</i>	4.9%
TOURISM AND OTHER RELATED ECONOMIC STATISTICS			
Total Expenditure (<i>US\$ millions</i>)	\$110.1	GDP at Factor Cost (<i>US\$ millions</i>)	\$468.0
Tourism Budget (<i>US\$ 000</i>) ^{IX b}	\$3,238	Consumer Price Index (<i>%ch. 2008/'07</i>)	5.4%
Hotel and Restaurant contribution to GDP ^I	10.3%		
ACCOMMODATION STATISTICS		SOCIO-ECONOMIC STATISTICS	
Rooms ^{VIII}	1,754	Land Area (<i>square Kilometres</i>)	269
		Population (<i>thousand mid year 2008</i>)	51.3

ST. KITTS & NEVIS

TOURIST ARRIVALS BY MAIN MARKETS 2007



MONTHLY TOURIST ARRIVALS



TOURIST ARRIVALS BY COUNTRY OF RESIDENCE

Country of Residence	2004	2005	2006	2007	% Share	
					2008	2008
United States	64859	77300	78800	68586	n.a	n.a
Canada	6325	9052	7555	7076	n.a	n.a
United Kingdom	11004	9541	9890	12791	n.a	n.a
Other Europe	2177	2068	2140	1832	n.a	n.a
OECS						
Other CARICOM	31909	24961	32605	28885	n.a	n.a
U.S. Virgin Islands						
Netherlands Antilles						
Rest of World	1364	4005	1980	1952	n.a	n.a
TOTAL	117638	126927	132970	121122	106,408	n.a

MONTHLY TOURIST ARRIVALS

Month	2004	2005	2006	2007	%Change	
					2008	2008/07
January	10080	13079	13417	12296	10255	-16.6
February	13093	13528	13224	10326	10801	4.6
March	12385	12904	14216	14710	12686	-13.8
April	12941	13201	13874	11433	9623	-6.5
May	9624	10506	11629	10134	8216	-18.9
June	11809	11309	13705	11162	10556	-5.4
July	11972	12953	12275	10554	9492	-10.1
August	6842	8716	8678	9120	7840	-14.0
September	3856	4255	4414	6189	5261	-15.0
October	7202	7348	7582	5433	5422	-0.2
November	7019	7514	7850	9849	7112	-27.8
December	10815	11614	12106	11955	9144	-23.5
TOTAL	117638	126927	132970	123161	106408	-13.6

ST KITTS AND NEVIS

CRUISE PASSENGER ARRIVALS*

Month	2003	2004	2005	2006	2007	%Change 2007/06
January	25392	39517	33910	35989	33647	-6.5
February	19415	41646	41430	36752	30994	-15.7
March	20250	35995	41384	38085	39167	2.8
April	13517	20438	23041	25594	27303	6.7
May	557	3436	1310	561	3445	514.1
June	431	5839	0	63	0	-
July	1313	6406	217	145	177	22.1
August	0	7306	2821	0	0	-
September	0	7739	0	1930	0	-
October	6029	10036	3980	3207	10805	236.9
November	25257	31728	30502	25103	45657	81.9
December	38268	44449	38237	35646	56198	57.7
Total	150429	254535	216832	203075	247393	21.8

Number of calls 281 373 263 264 242

* *Includes arrivals by yacht*

TOURIST ACCOMMODATION (Rooms)

Type of Accommodation	2000	2001	2002	2003	2004
Hotels	n.a	n.a	n.a	n.a	n.a
Apts/Cottages	n.a	n.a	n.a	n.a	n.a
Guest Houses/Other	n.a	n.a	n.a	n.a	n.a
TOTAL	1754	n.a	n.a	n.a	n.a

Source: Statistics Division and Department of Tourism, St Kitts and Nevis

SAINT LUCIA

Visitor Arrival Summary

Saint Lucia registered just under a 10.0 percent increase in Tourist Arrivals in 2010, when 305.9 thousand tourists visited. Almost all months saw double digit growth over the 2009 arrival levels, with only April, November and December performing worse in 2010. Consequently, Stay-over arrivals in the Winter season grew by 8.9 percent, and those in the Summer were up by 10.4 percent. The overall annual increase put Saint Lucia's tourism performance back on par with the 2006 levels.

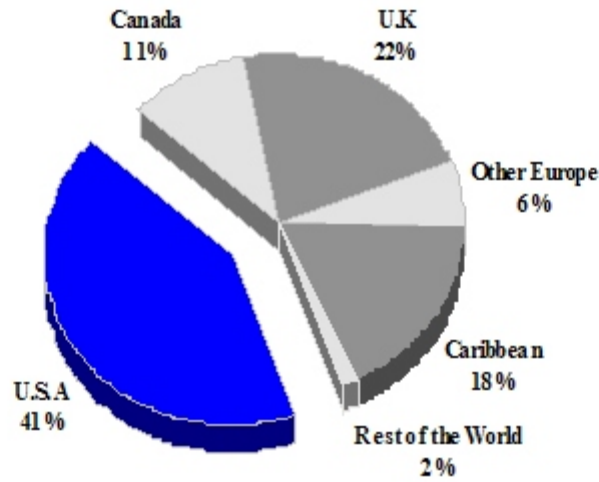
- ◆ Among the key markets, the United States provided 42.2 percent (129.1 thousand) of all arrivals. This was a substantial 30.8 percent increase in arrivals and almost 7 percentage points rise in share when compared to 2009 results. Arrivals from the U.K., (the second largest market for this destination) and the Caribbean fell by 6.2 percent and 10.3 percent respectively to reach 67.4 thousand and 54.0 thousand at the end of year. Consequently, both markets lost market share of around 4.0 points 2010. Arrivals from Canada expanded by 12.6 percent, Germany soared by 71.4 percent and those from Other European countries climbed by 30.8 percent. All other sources when aggregated grew by 18.0 percent.
- ◆ Cruise Passenger arrivals totalled 670.0 thousand in 2010. This represented a decrease of 4.2 percent, with passenger arrivals in most months receding below the corresponding total in 2009. The most significant losses came in May (-26.8%), July (-18.9%), September (-29.5%) and November (-32.9%).

TOURISM HIGHLIGHTS FOR 2010

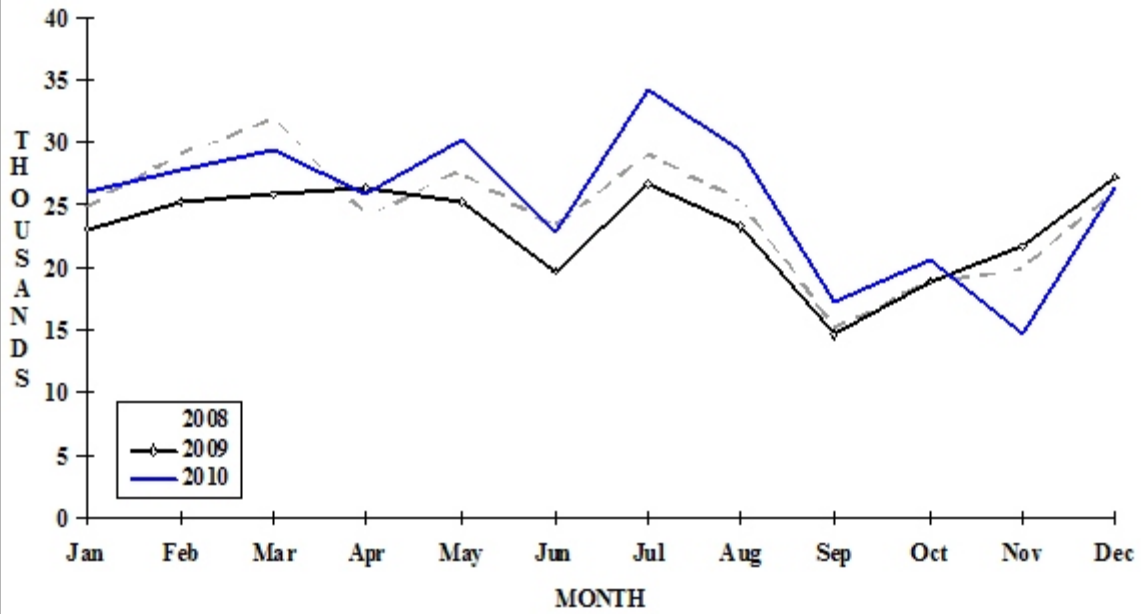
VISITOR ARRIVALS			
Tourist Arrivals ✈	305,937	Cruise Passengers	670,043
➤ <i>Summer</i>	63.9%	➤ <i>Summer</i>	43.7%
➤ <i>Winter</i>	36.1%	➤ <i>Winter</i>	56.3%
Same-day Visitors	7,613	Cruise Ship Calls	380
VISITOR PROFILE			
Average Length of Stay (nights)	8.8	Tourist Arrivals by Place of Stay ^{IV}	
Tourist Arrivals by Purpose of Visit ^{II}		➤ <i>Hotels</i>	75.9%
➤ <i>Holiday</i>	78.1%	➤ <i>Guest Houses/Apartments</i>	1.0%
➤ <i>Business</i>	4.4%	➤ <i>Other</i>	23.1%
➤ <i>Other</i>	17.5%		
TOURISM AND OTHER RELATED ECONOMIC STATISTICS			
Total Expenditure (<i>US\$ millions</i>)	\$328.9	GDP at Factor Cost (<i>US\$ millions</i>)	\$771.6
Tourism Budget (<i>US\$ thousands</i>) ^{I b}	\$18,679	Hotel and Restaurant contribution to GDP ^{III}	12.6%
		Consumer Price Index (% ch. 2010/'09)	1.8%
ACCOMMODATION STATISTICS		SOCIO-ECONOMIC STATISTICS	
Rooms	4,685	Land Area (<i>square Kilometres</i>)	616
Room Occupancy Rates	58.0%	Population (<i>thousand mid year 2009</i>)	172.0

SAINT LUCIA

**TOURIST ARRIVALS BY MAIN MARKETS
2010**



MONTHLY TOURIST ARRIVALS



TOURIST ARRIVALS BY COUNTRY OF RESIDENCE

Country of Residence	2006	2007	2008	2009	% Share	
					2010	2010
United States	117450	113433	108596	98685	129085	42.2
Canada	17491	18640	26279	28563	32154	10.5
United Kingdom	73312	79180	83693	71853	67417	22.0
Germany	2569	1592	1823	2416	4142	1.4
Other Europe	9684	7056	11355	12550	14136	4.6
Caribbean	78464	58917	59757	60183	53998	17.7
Rest of World	3540	8700	4258	4241	5005	1.6
TOTAL	302510	287518	295761	278491	305937	100.0

MONTHLY TOURIST ARRIVALS

Month	2006	2007	2008	2009	%Change	
					2010	2010/09
January	25215	21887	24958	23051	26083	13.2
February	28619	24610	29088	25262	27867	10.3
March	27832	26573	31982	25938	29580	14.0
April	29024	27716	24197	26326	25984	-1.3
May	28055	25212	27782	25292	30349	20.0
June	21760	21823	23223	19706	22993	16.7
July	30453	29825	29095	26794	34186	27.6
August	26538	23249	25315	23304	29589	27.0
September	16347	17064	15149	14675	17393	18.5
October	20453	19598	18996	19031	20624	8.4
November	21153	22163	19803	21777	14741	-32.3
December	27061	27798	26173	27335	26548	-2.9
TOTAL	302510	287518	295761	278491	305937	9.9

CRUISE PASSENGER ARRIVALS

Month	2006	2007	2008	2009	2010	% Change 2010/09
January	54532	81536	102286	100131	99811	-0.3
February	51877	79152	76574	89658	103585	15.5
March	59119	77679	92312	108392	106854	-1.4
April	39384	57864	61622	61213	66874	9.2
May	5432	24336	21748	26489	19384	-26.8
June	11069	19538	19619	17792	18339	3.1
July	10410	20024	22954	27007	21910	-18.9
August	7000	26555	19659	20890	21729	4.0
September	10735	18940	9323	26774	18875	-29.5
October	11187	29332	19261	32892	32795	-0.3
November	40503	84639	70242	78213	52516	-32.9
December	58345	90748	107080	109855	107371	-2.3
TOTAL	359593	610343	622680	699306	670043	-4.2

Number of Calls	267	314	315	397	380
------------------------	-----	-----	-----	-----	-----

VISITOR ARRIVALS BY CATEGORY

Category	2006	2007	2008	2009	2010	% Share 2010
Tourists	302510	287518	295761	278491	305937	31.1
Cruise Passenger	359593	610345	622680	699306	670043	68.1
Other Same-day Visitors	7051	7777	9582	4967	7613	0.8
TOTAL	669154	905640	928023	982764	983593	100.0

TOURIST ACCOMMODATION (Rooms)

Type of Accommodation	2004	2005	2006	2007	2008
Hotels	3123	3572	3798	3981	3981
Apartments	159	166	500	470	470
Guest Houses	405	439	439	438	439
Villas\Cottages	287	334	439	-	-
TOTAL	3974	4511	5176	4889	4890

Sources: Saint Lucia Tourist Board and Government Statistical Department

ST. MAARTEN

Visitor Arrival Summary

St. Maarten experienced no real growth in Tourist Arrivals in 2010, as the total arrivals of 443.1 thousand were only 0.7 percent above the previous year's total. Even though Stay-over arrivals during the Winter months (40.3% share) were up by 4.8 percent, the 1.9 percent decline in the Summer (59.7% share) overpowered this, thus resulting in the overall flat performance.

- ◆ The United States, which accounted for 53.3 percent (236.4 thousand) of the total arrivals, fell by 1.7 percent. Overall, arrivals from Europe were 22.8 percent of total Stay-over arrivals, while recording an increase of 2.8 percent. Of this total, France (including French West Indies) grew by 2.5 percent to hold 15.3 percent of total Stay-over arrivals. Arrivals from Other Europe contracted by 0.9 percent. Canada outstripped the 2009 performance by 3.8 percent, ending with 33.5 thousand tourists.
- ◆ Overall, 1,512.1 thousand Cruise Passengers arrived in St. Maarten aboard 551 cruise ship calls in 2010. This was an increase of 24.5 percent in passenger arrivals. Passenger arrivals during the Winter months moved downward slightly by -0.1 percent, whereas there was robust growth in the Summer, calculated at 56.5 percent.

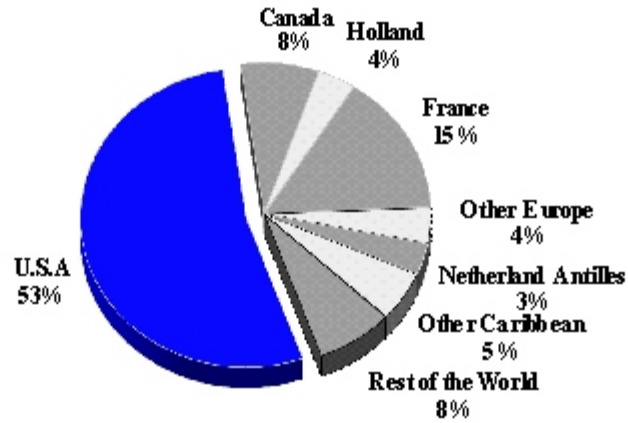
TOURISM HIGHLIGHTS FOR 2010

VISITOR ARRIVALS			
Tourist Arrivals ✈	443,136	Cruise Passengers	1,512,618
➡ <i>Summer</i>	59.7%	➡ <i>Summer</i>	54.6%
➡ <i>Winter</i>	40.3%	➡ <i>Winter</i>	45.4%
Average Length of Stay (<i>nights</i>)	n.a.	Cruise Ship Calls	551
TOURISM AND OTHER RELATED ECONOMIC STATISTICS			
Total Expenditure (<i>US\$ millions</i>) *	\$674.4	Consumer Price Index (<i>%ch 2010/'09</i>)	3.2%
Tourism Budget (<i>US\$ thousands</i>) ^{VI b}	\$5,004		
ACCOMMODATION STATISTICS		SOCIO-ECONOMIC STATISTICS	
Rooms ^{VIII}	3,532	Land Area (<i>square Kilometres</i>)	34
Room Occupancy Rates	55.0%	Population (<i>thousand mid year 2010</i>)	37.4

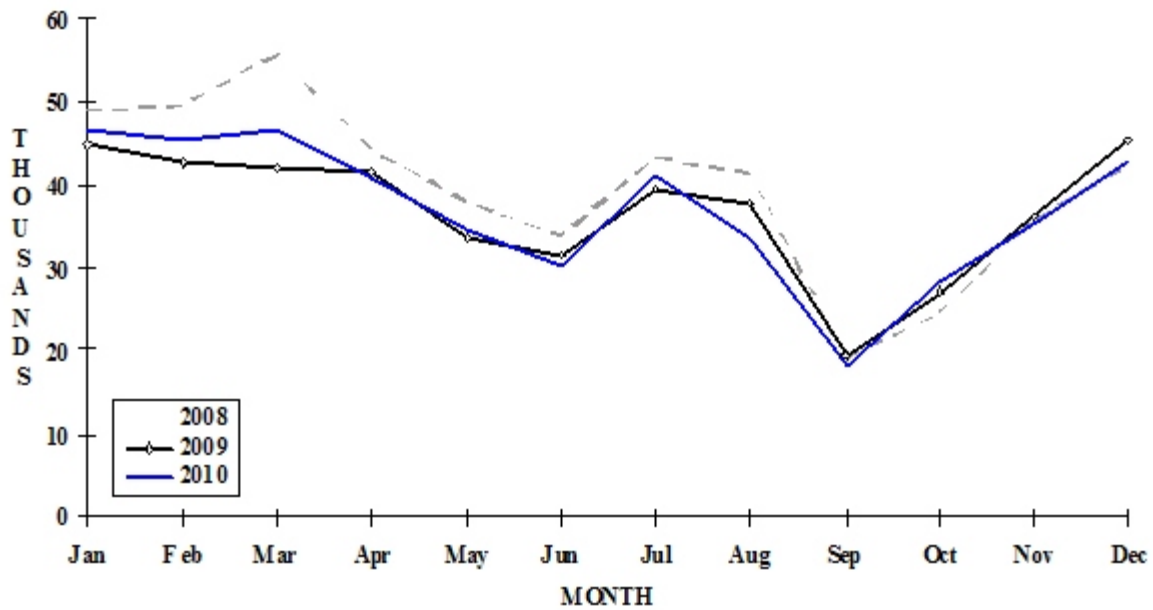
* Includes Visitor Expenditure for Saba and St. Eustatius

ST. MAARTEN

**TOURIST ARRIVALS BY MAIN MARKETS
2010**



MONTHLY TOURIST ARRIVALS



TOURIST ARRIVALS BY NATIONALITY*

Nationality	2006	2007	2008	2009	% Share	
					2010	2010
United States	246064	253831	257912	240431	236379	53.3
Canada	30646	32350	34055	32277	33498	7.6
Holland	15842	16889	18282	15216	16497	3.7
France**	63475	61110	67209	66177	67833	15.3
Other Europe	17741	18366	17222	16948	16788	3.8
Neth. Antilles	15746	15543	15096	13734	15018	3.4
Other Caribbean	39034	35209	31152	25266	23780	5.4
Rest of World	39256	36109	34482	30136	33343	7.5
TOTAL	467804	469407	475410	440185	443136	100.0

*By air, including persons destined for St Martin (the French side of the island); Excludes inter-Antillean arrivals

**Includes citizens of the French West Indies.

MONTHLY TOURIST ARRIVALS*

Month	2006	2007	2008	2009	% Change	
					2010	2010/09
January	44945	42879	48688	44647	46546	4.3
February	46890	47098	49498	42521	45070	6.0
March	48515	53005	55595	41878	46423	10.9
April	50643	45123	43992	41601	40723	-2.1
May	33782	32863	37878	33566	34545	2.9
June	32962	35085	33707	31464	30369	-3.5
July	41273	39346	43162	39546	41242	4.3
August	35311	36683	41291	37549	33358	-11.2
September	20885	22154	19273	19183	18249	-4.9
October	28056	28329	24409	27045	28329	4.7
November	37550	36968	35596	36005	35363	-1.8
December	46992	49874	42321	45180	42919	-5.0
TOTAL	467804	469407	475410	440185	443136	0.7

*Arrivals at Juliana Airport (includes visitors destined for St Martin)

CRUISE PASSENGER ARRIVALS

Month	2006	2007	2008	2009	2010	% Change 2010/09
January	165773	195692	174778	195440	180534	-7.6
February	157220	160426	162491	170828	170036	-0.5
March	176707	176115	180709	174755	192195	10.0
April	146473	128574	137299	146280	143734	-1.7
May	89624	76668	57983	50266	79074	57.3
June	69248	69046	59273	43494	84889	95.2
July	66864	67025	64478	45414	91835	102.2
August	74942	88132	59474	39447	82024	107.9
September	63630	63766	52341	37892	57974	53.0
October	82239	85007	75352	52841	77992	47.6
November	158110	146734	131480	90288	151672	68.0
December	170815	168021	190154	168201	200659	19.3
TOTAL	1421645	1425206	1345812	1215146	1512618	24.5

Number of Calls	609	614	518	500	551
------------------------	-----	-----	-----	-----	-----

TOURIST ACCOMMODATION (Rooms)

Type of Accommodation	2003	2004	2005	2006	2007
Hotels	n.a	n.a	n.a	n.a	n.a
Guest Houses	n.a	n.a	n.a	n.a	n.a
Villas/Condos/Apartments	n.a	n.a	n.a	n.a	n.a
Other	n.a	n.a	n.a	n.a	n.a
Total	3532	n.a	n.a	n.a	n.a

Source: St. Maarten Tourist Bureau

ST. VINCENT AND THE GRENADINES

Visitor Arrival Summary

In 2010, St. Vincent and the Grenadines registered its fourth successive decline in Tourist Arrivals after five years of robust growth between 2001-2006. Arrivals contracted by 3.9 percent, totalling 72.5 thousand. Winter arrivals, which accounted for 35.2 percent of all arrivals fell off by 2.9 percent, and those in the Summer (64.8 percent of the total) shrank by 4.5 percent.

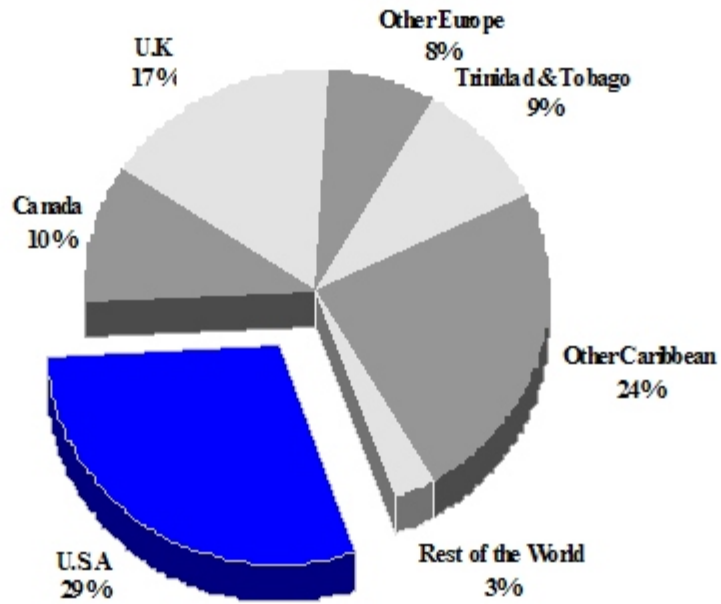
- ◆ Arrivals from the Caribbean, representing 33.1 percent of total Stay Over arrivals, diminished by 10.7 percent. European arrivals, likewise, dwindled by -7.5 percent, down to 17.7 thousand. This was the net effect of fewer tourists originating from United Kingdom (down 9.1 percent) as well as Continental Europe (down 3.8 percent) The North American markets of the United States and Canada each recorded improvements in tourist numbers, respectively increasing by 6.9 percent and 5.7 percent.
- ◆ There was further significant reduction in the number of cruise ships berthing in this territory - 126 ships in 2010 versus 164 in 2009. Correspondingly, the Cruise Passenger arrivals level in 2010 abated by 25.8 percent, ending with an aggregate of just under 111.0 thousand passengers. There was significant decreases in the arrival numbers during the Winter (-29.1%) and Summer (-19.0%) months, which gave rise to the overall shrinkage in Cruise Passenger numbers.

TOURISM HIGHLIGHTS FOR 2010

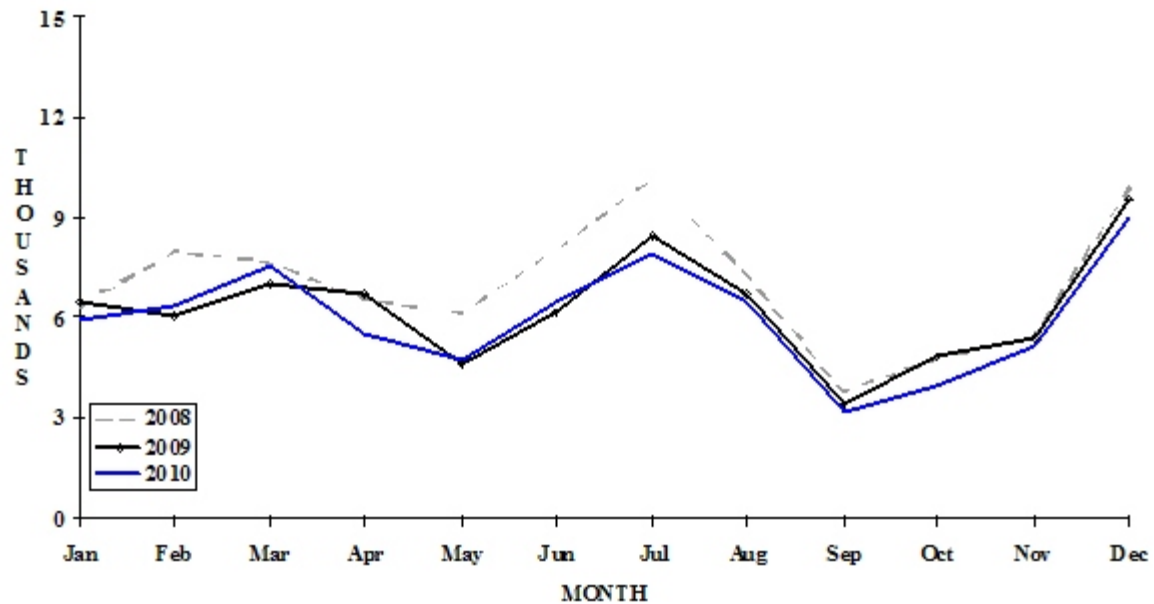
VISITOR ARRIVALS			
Tourist Arrivals ➔	72,478	Cruise Passengers	110,954
➔ <i>Summer</i>	64.8%	➔ <i>Summer</i>	36.4%
➔ <i>Winter</i>	35.2%	➔ <i>Winter</i>	63.6%
		Yacht Passengers	42,603
VISITOR PROFILE			
Average Length of Stay (<i>nights</i>)	11.7	Tourist Arrivals by Place of Stay^{III}	
Tourist Arrivals by Purpose of Visit^{II}		➔ <i>Hotels</i>	32.8%
➔ <i>Holiday</i>	70.7%	➔ <i>Guest House/Apartment</i>	3.9%
➔ <i>Business</i>	16.6%	➔ <i>Private</i>	51.8%
➔ <i>Other</i>	12.7%	➔ <i>Other</i>	11.5%
TOURISM AND OTHER RELATED ECONOMIC STATISTICS			
Total Expenditure (<i>US\$ millions</i>)	\$85.8	GDP at Factor Cost (<i>US\$ millions</i>)	\$473.2
Tourism Budget (<i>US\$ thousand</i>) ^{Xb}	\$1,557	Consumer Price Index (<i>%ch. 2010/'09</i>)	1.5%
		Hotel and Restaurant contribution to GDP ^{III}	1.9%
ACCOMMODATION STATISTICS		SOCIO-ECONOMIC STATISTICS	
Rooms ^{II}	2,475	Land Area (<i>square Kilometres</i>)	389.0
		Population (<i>thousand mid year 2010</i>)	100.9

ST. VINCENT & THE GRENADINES

TOURIST ARRIVALS BY MAIN MARKETS 2010



MONTHLY TOURIST ARRIVALS



ST VINCENT AND THE GRENADINES

TOURIST ARRIVALS BY COUNTRY OF RESIDENCE

Country of Residence	2006	2007	2008	2009	% share	
					2010	2010
United States	28598	26642	24042	20159	21551	29.7
Canada	6542	6745	6882	6820	7208	9.9
United Kingdom	14837	16742	15442	13347	12136	16.7
Other Europe	7124	6712	6860	5750	5529	7.6
Trinidad & Tobago	11002	8610	8335	7346	6709	9.3
Other Caribbean	27217	21349	20140	19489	17259	23.8
Rest of World	2112	2837	2400	2535	2086	2.9
TOTAL	97432	89637	84101	75446	72478	100.0

MONTHLY TOURIST ARRIVALS

Month	2006	2007	2008	2009	% Change	
					2010	2010/09
January	7943	8406	6370	6444	5935	-7.9
February	7404	8381	7976	6049	6401	5.8
March	9345	9461	7664	7065	7627	8.0
April	10581	7636	6567	6704	5534	-17.5
May	6359	6579	6131	4676	4732	1.2
June	8470	7538	8020	6137	6504	6.0
July	11373	11010	10171	8454	7897	-6.6
August	8316	7468	7257	6670	6485	-2.8
September	3951	3935	3800	3392	3207	-5.5
October	5039	2194	4832	4851	3973	-18.1
November	6789	6440	5388	5404	5149	-4.7
December	11862	10589	9925	9600	9034	-5.9
TOTAL	97432	89637	84101	75446	72478	-3.9

ST VINCENT AND THE GRENADINES

CRUISE PASSENGER ARRIVALS*

Month	2006	2007	2008	2009	% Change	
					2010	2009/08
January	18827	30142	22441	36056	17051	-52.7
February	19712	23292	16643	25579	22331	-12.7
March	15393	20843	14065	27817	25243	-9.3
April	8766	14918	13540	10155	5948	-41.4
May	422	6890	745	2006	0	-
June	212	2420	0	0	0	-
July	240	2861	97	0	0	-
August	120	4513	0	0	0	-
September	180	2206	0	0	0	-
October	1644	5135	2771	3166	3885	22.7
November	16701	11053	16089	16369	18927	15.6
December	24257	20282	30318	28316	17569	-38.0
TOTAL	106474	144555	116709	149464	110954	-25.8

VISITOR ARRIVALS BY FIRST PORT OF ENTRY IN 2010

Port	St. Vincent	Bequia	Mustique	Canouan	Union Island	Total
Air*	56185	3688	6328	3904	7459	77564
Sea**	98864	36530	677	575	16911	153557

* Includes same-day visitors

** Includes Cruiseship and Yacht Passengers

Type of Accommodation	2004	2005	2006	2007	2008
Hotels	839	826	915	n.a	1133
Apartments	526	526	358	n.a	453
Cottages, Villas,	249	249	240	n.a	608
Guest Houses	265	171	265	n.a	589
TOTAL	1879	1772	1778	n.a	2783

Source: Department of Tourism, St Vincent and the Grenadines